

# TWO-DOOR MOTOR CARS 1980-1989

## Automatic Air Conditioning System Menu

C1	Condensor pipes and fittings
C2	Compressor and mounting and thermal fuse
C3	Pressure valves, evaporator pipes and fittings
C4	Heater, heater tap, pipes and fittings
C5	Fans, ducts and recirculation flaps
C6	Heater box, flaps and fittings
C7	Distribution box, centre outlet flap and controls
C8	Demister duct and facia vents
C9	Lower quantity flaps and controls

C1•001•01

Rolls-Royce  
Corniche  
Convertible

Bentley  
Corniche  
Convertible

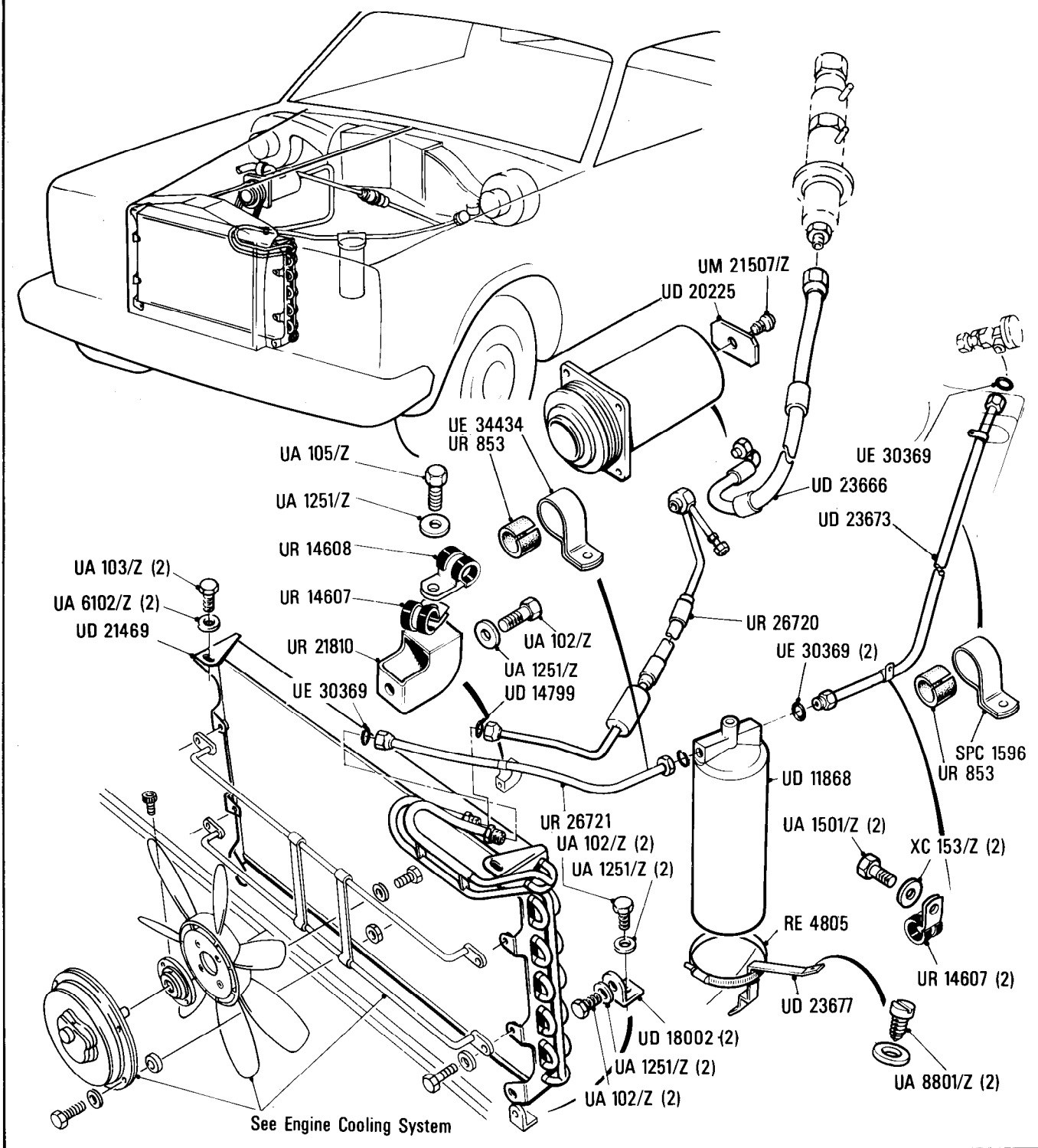
Car serial number

From VIN number  
SCAZD0006CCHO5037 to 10080

**Automatic Air Conditioning System**  
Condenser Pipes & Fittings

Parts marked thus \* refer to Additional Information below

◀ Left-hand ▶ Right-hand



Additional Information

© Rolls-Royce Motors Limited 1984

C1·002·01

Rolls-Royce  
Corniche

Bentley  
Continental

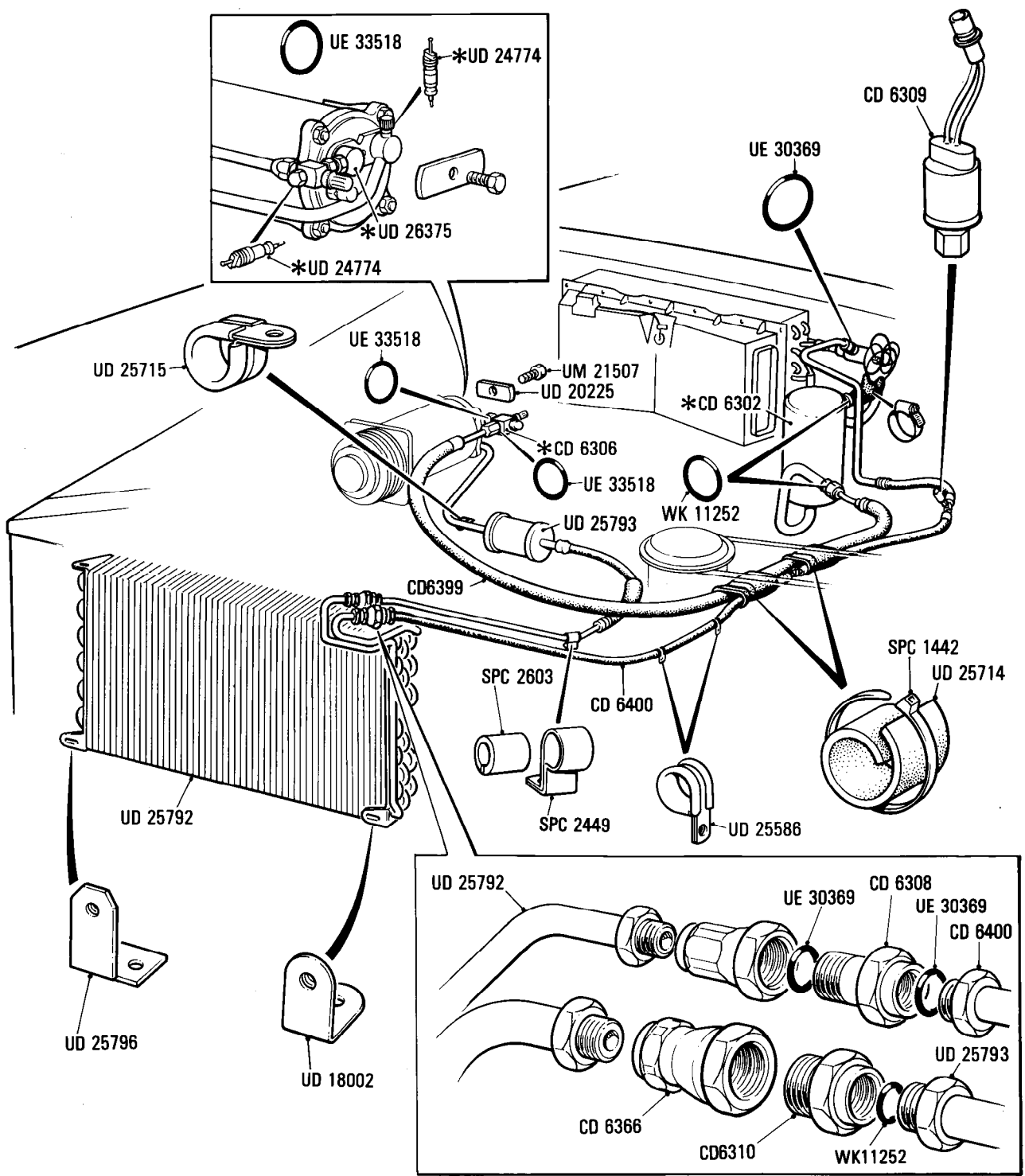
**Automatic Air Conditioning System**  
**Condensor Pipes & Fittings**

Car serial number

USA cars only  
SCAZD42A3FCX10081 to 16968  
O.T.A.  
SCAZD0000FCX10123 to 16955

Parts marked thus \* refer to Additional Information below

◀ Left-hand ▶ Right-hand



**Additional Information**

- \* UD 26375 Adapter compressor
- \* UD 24474 Schrader valve
- \* CD 6306 Service valve suction
- \* CD 6302 Accumulator

© Rolls-Royce Motors Limited 1984

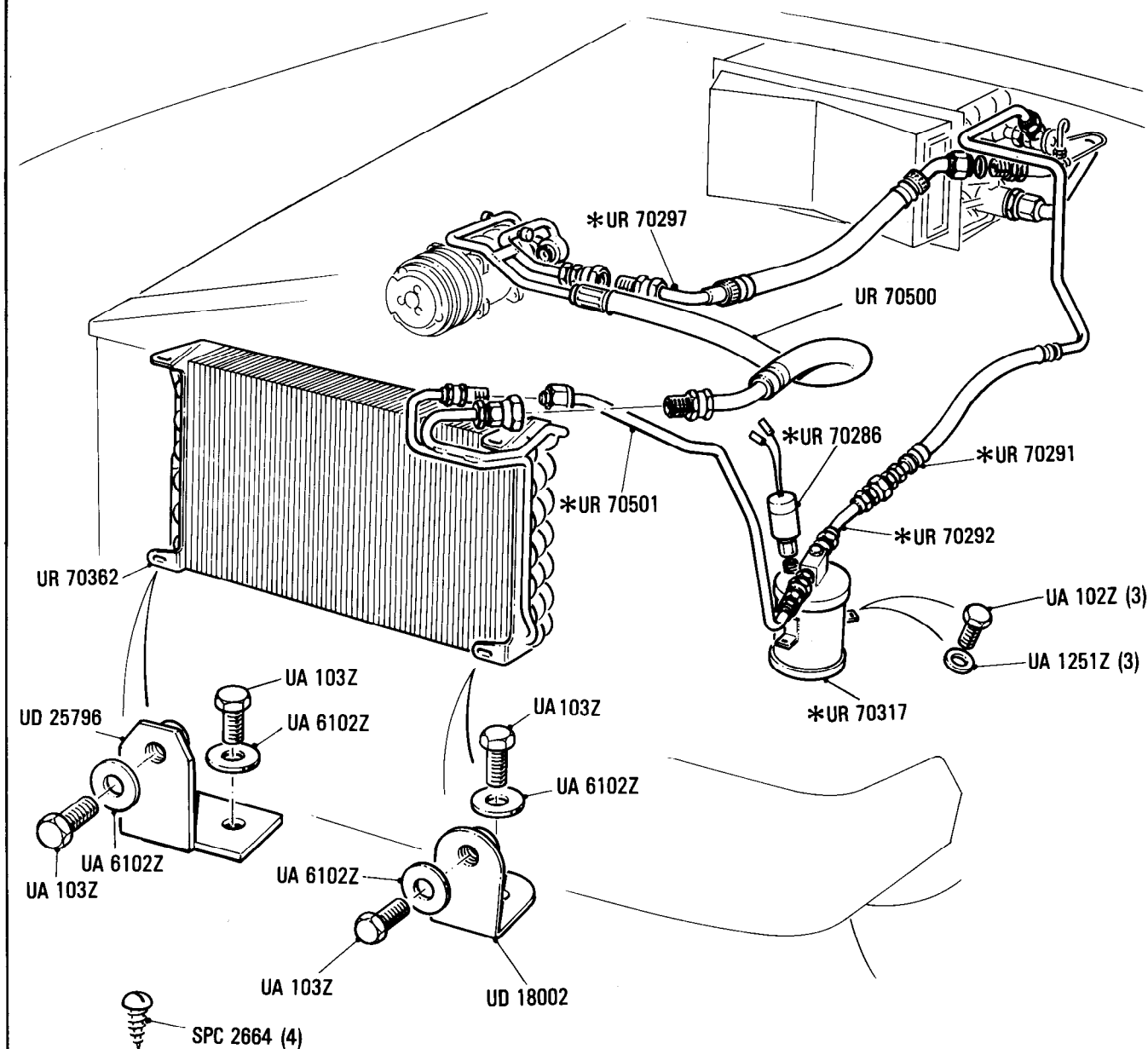
## Automatic Air Conditioning System Condensor Pipes & Fittings

**Car serial number**

SCAZD02A0HCX20010 to 29290

**Parts marked thus \* refer to Additional Information below**

◀ Left-hand ▶ Right-hand



### Additional Information

© Rolls-Royce Motor Cars Limited 1987

- \* UR 70502 Assy Receiver Dryer – Comprises of
- \* UR 70501 Assy Liquid Pipe – Condensor Drier
- \* UR 70317 Receiver Dryer
- \* UR 70292 Outlet Pipe Receiver Drier
- \* UR 70286 Low Pressure Switch
- \* UR 70297 } Part of UR 70305 –
- \* UR 70291 } Assy Evaporator

C2•001•01

Rolls-Royce  
Corniche  
Convertible

Bentley  
Corniche  
Convertible

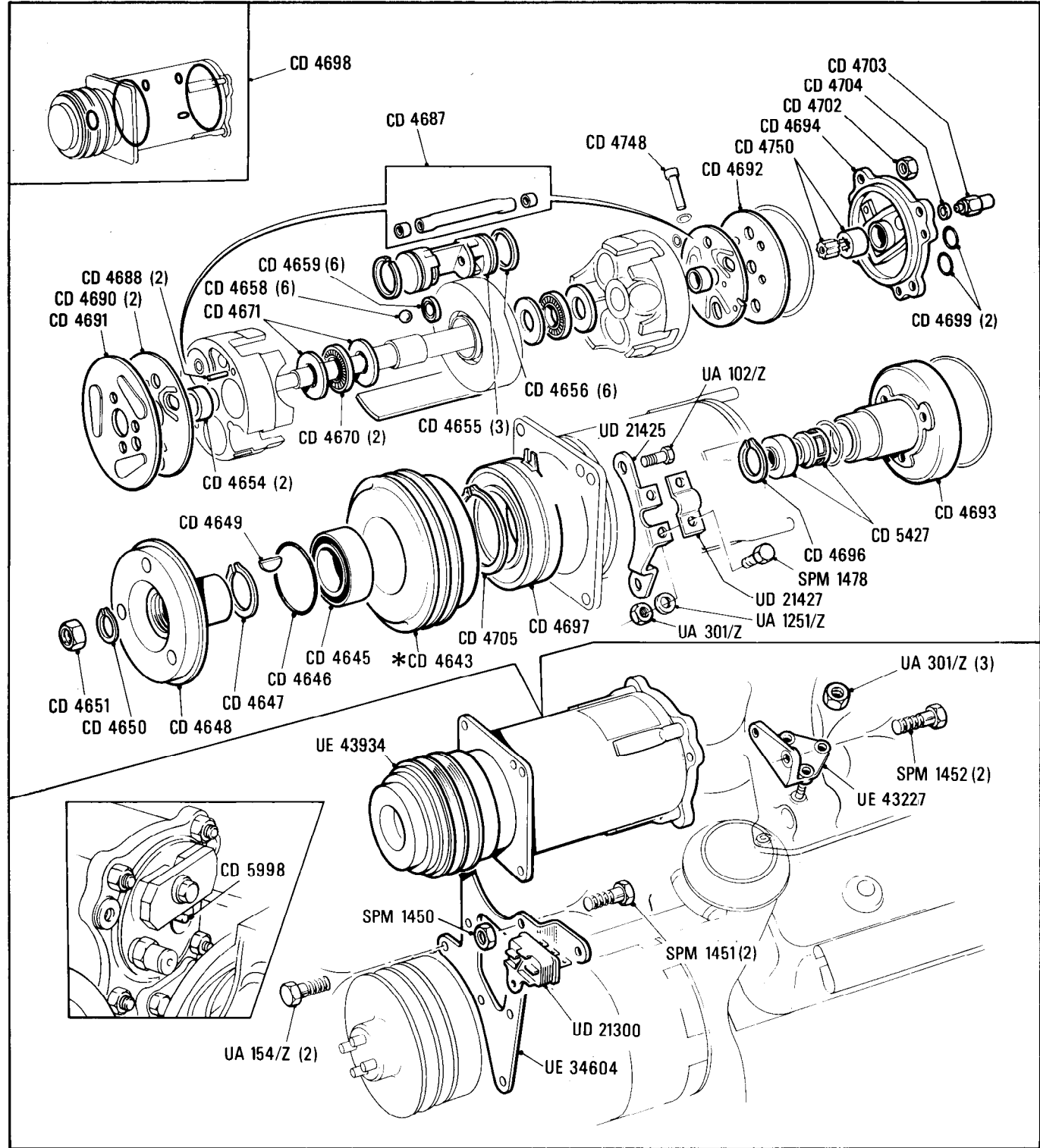
Car serial number

From VIN number  
SCAZDOOO6CCHO5037 to 29290

Automatic Air Conditioning System  
Compressor & Mountings & Thermal Fuse

Parts marked thus \* refer to Additional Information below

◀ Left-hand ▶ Right-hand



Additional Information

© Rolls-Royce Motors Limited 1984

\*CD 4643 Pulley & bearing assembly

C3•001•01

Rolls-Royce	Bentley
Corniche	Corniche
Convertible	Convertible

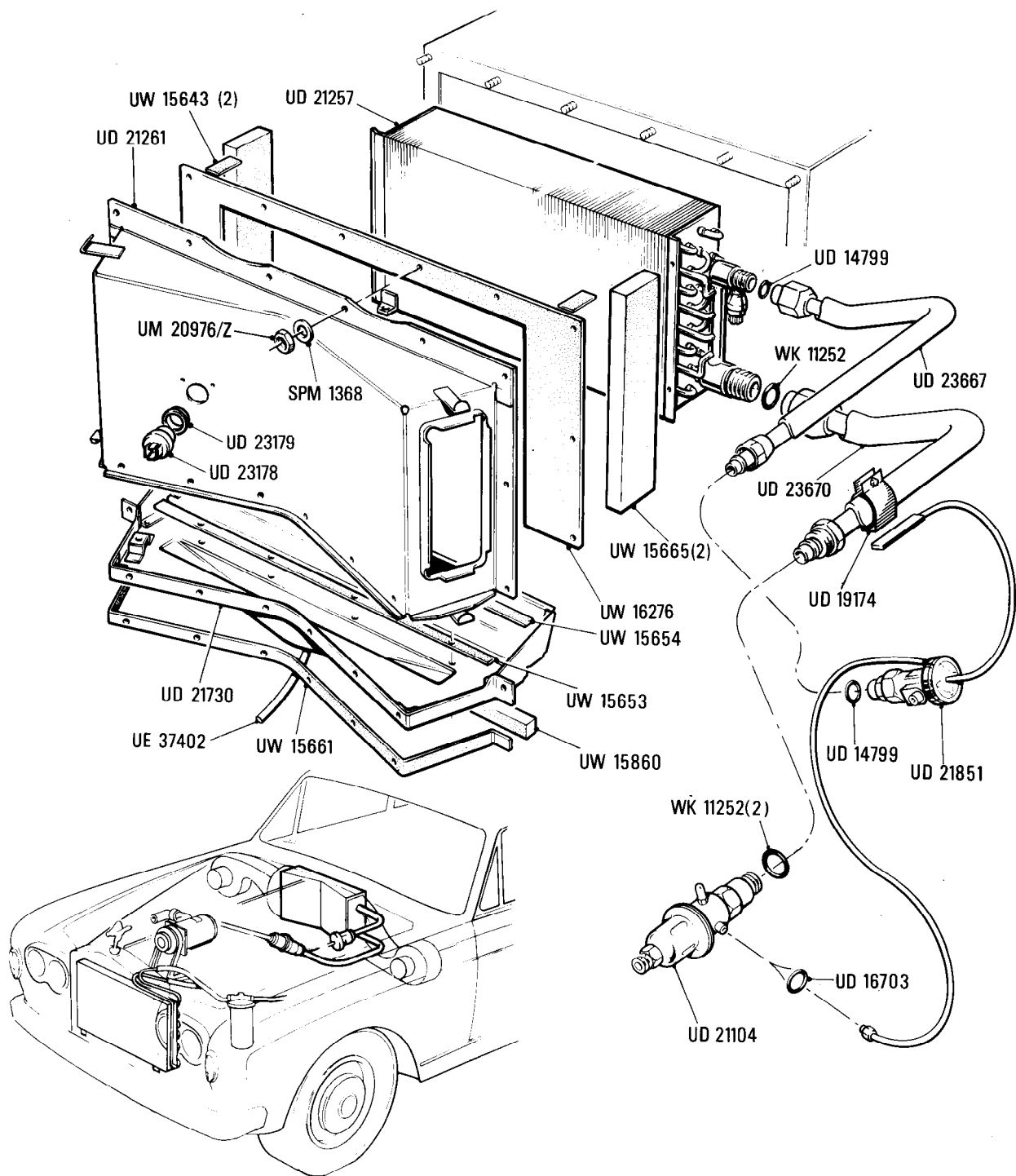
**Automatic Air Conditioning System**  
Pressure Valves, Evaporator, Pipes & Fittings

Car serial number

SCAZD0006CCH05037 - SCAZD42A5AFC10080,

Parts marked thus \* refer to Additional Information below

◀ Left-hand ▶ Right-hand



Additional Information

© Rolls-Royce Motors Limited 1984

C3·002·00

Rolls-Royce  
Corniche

Bentley  
Continental

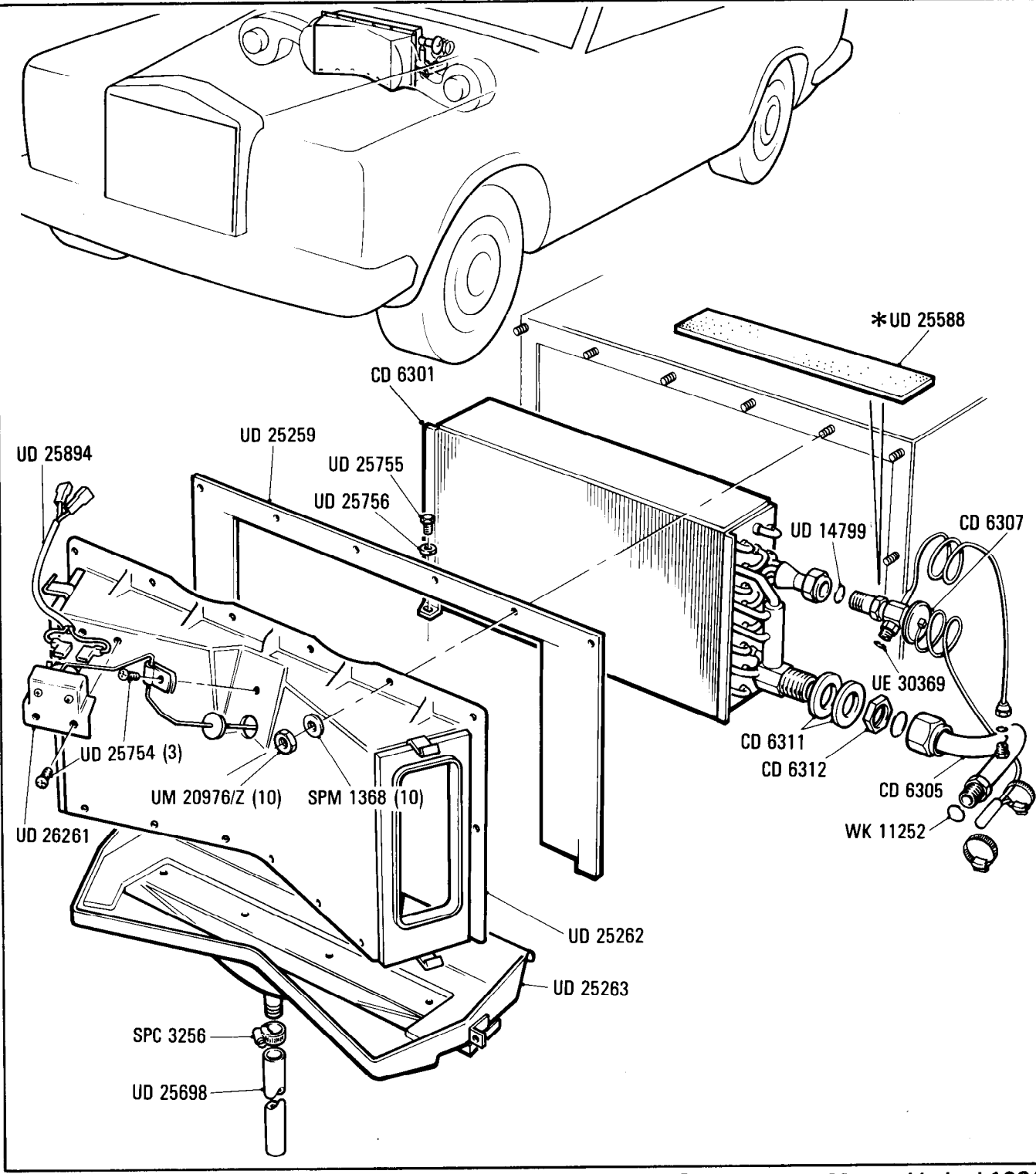
**Automatic Air Conditioning System**  
**Evaporator, Pipes & Fittings (ARA)**

Car serial number

O.T.A. only  
SCAZD0000FCX10123 to 16968  
USA only  
SCAZD42A3FCX10081 to 16968

Parts marked thus \* refer to Additional Information below

◀ Left-hand ▶ Right-hand



Additional Information

© Rolls-Royce Motors Limited 1984

C3·003·02

Rolls-Royce  
Corniche

Bentley  
Continental

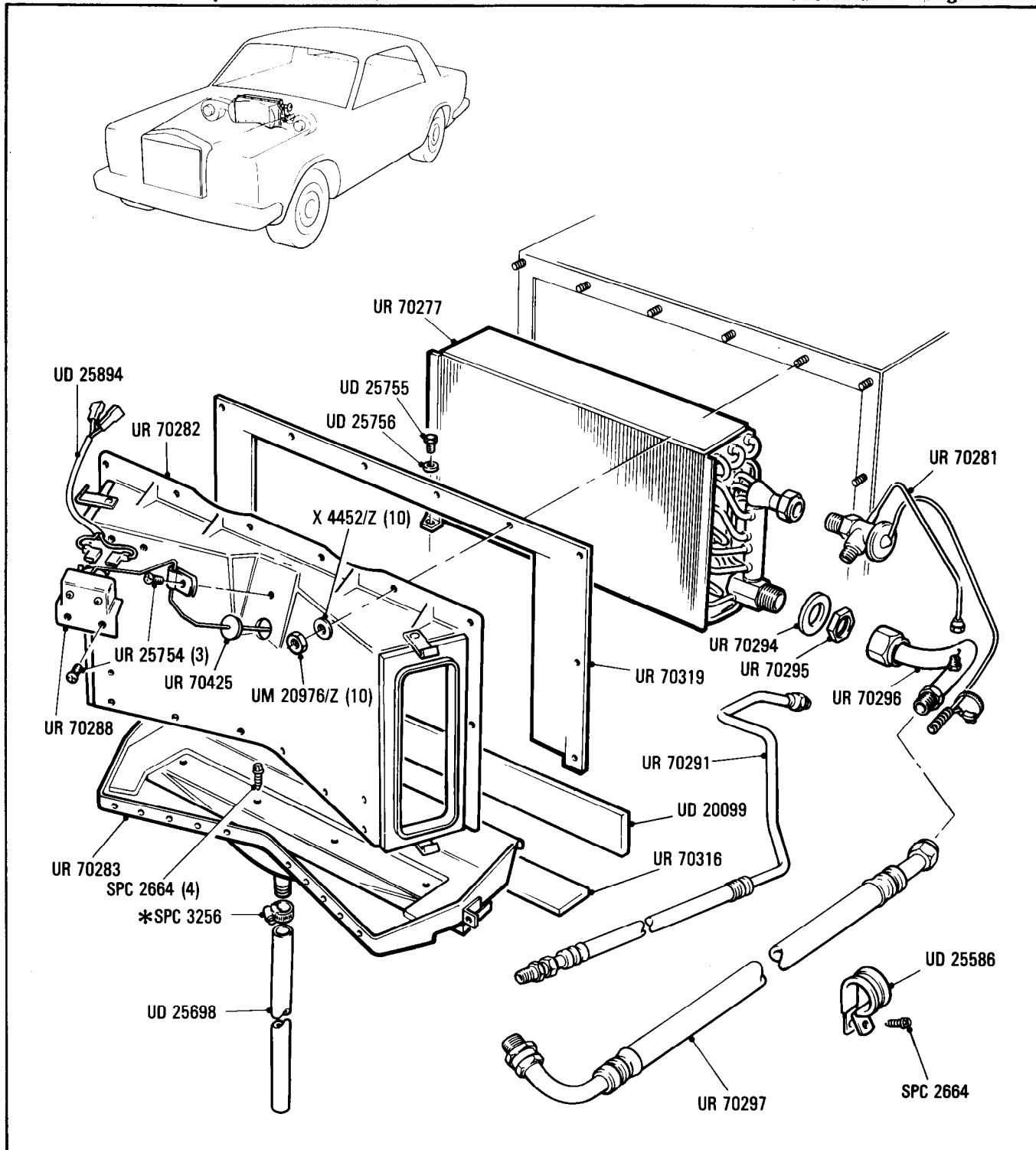
## Automatic Air Conditioning System Evaporator Pipes & Fittings

Car serial number

Parts marked thus \* refer to Additional Information below

◁ Left-hand ▷ Right-hand

SCAZD02A0HCX20010 to 24637 except  
23246, 23247



### Additional Information

© Rolls-Royce Motor Cars Limited 1987

\* UR 70305 Assembly evaporator complete comprises:-

- UR 70219 Assembly hose
- UR 70281 Expansion valve
- UR 70277 Evaporator
- UR 70294 Bulk head washer (2)
- UR 70295 Bulk head nut
- UR 70296 Pipe
- UR 70297 Pipe
- UA 6025 Cable tie, hose evaporator drain
- UD 17418 Grommet blanking

\* SPC 3256 or  
SPM 1983

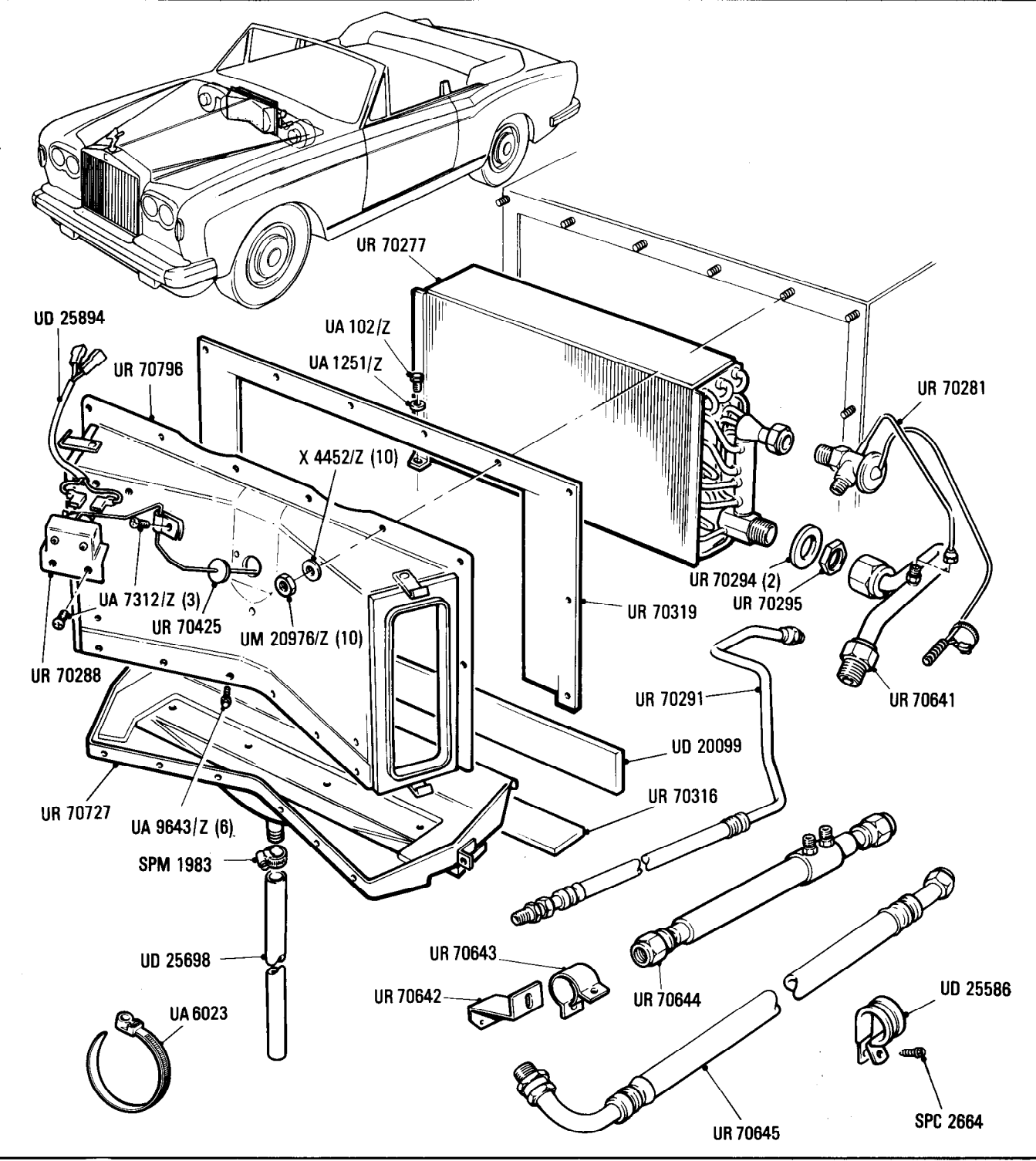
Automatic Air Conditioning System  
Evaporator Pipes & Fittings

Car serial number

SCAZSD00A7KCH23246, 23247, 24638 to  
29290

Parts marked thus \* refer to Additional Information below

◀ Left-hand ▶ Right-hand



Additional Information

© Rolls-Royce Motor Cars Limited 1987

- \* UR 70640 Assembly evaporator comprises:
  - UR 70291 Assembly liquid hose
  - UR 70281 Expansion Valve
  - UR 70277 Evaporator
  - UR 70294 Bulkhead washer (2)
  - UR 70295 Bulkhead nut
  - UR 70641 Assembly pipe adapter evaporator outlet
  - UR 70645 Assembly suction hose
  - UR 70642 Bracket cooler fuel support
  - UR 70643 Clamp cooler fuel
  - UR 70644 Cooler fuel

C4•001•01

Rolls-Royce  
Corniche  
Convertible

Bentley  
Corniche  
Convertible

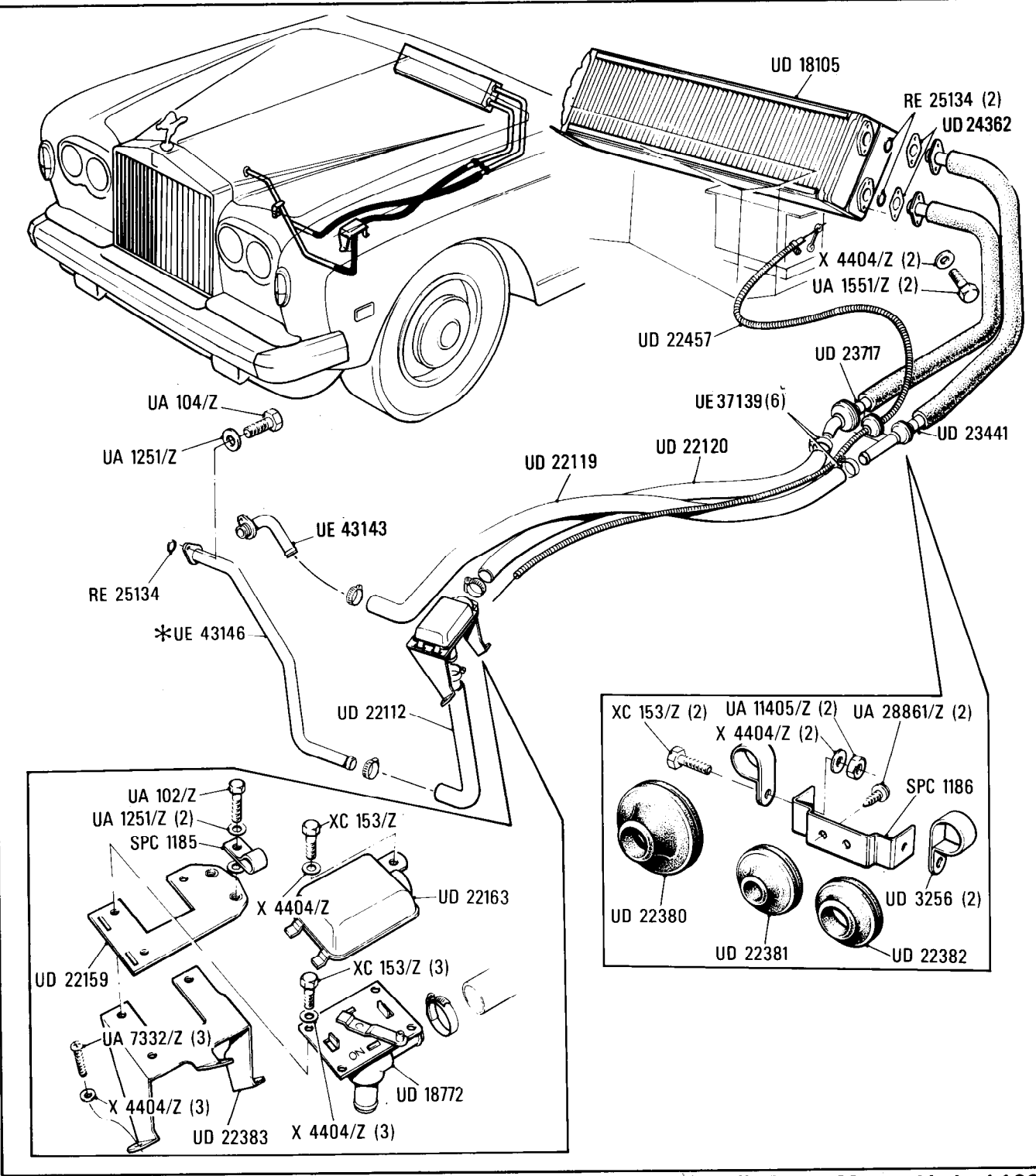
Car serial number

SCAZD0006CCH05037, - 08839, 08880 -  
08884, 08886, 08888 - 08904.

**Automatic Air Conditioning System**  
Heater, Heater Tap, Pipes & Fittings

Parts marked thus \* refer to Additional Information below

◀ Left-hand ▶ Right-hand



**Additional Information**

\* UE 43146 Non P.I. cars  
UE 43205 P.I. cars only

© Rolls-Royce Motors Limited 1984

C4-002-00

Rolls-Royce  
Corniche

Bentley  
Continental

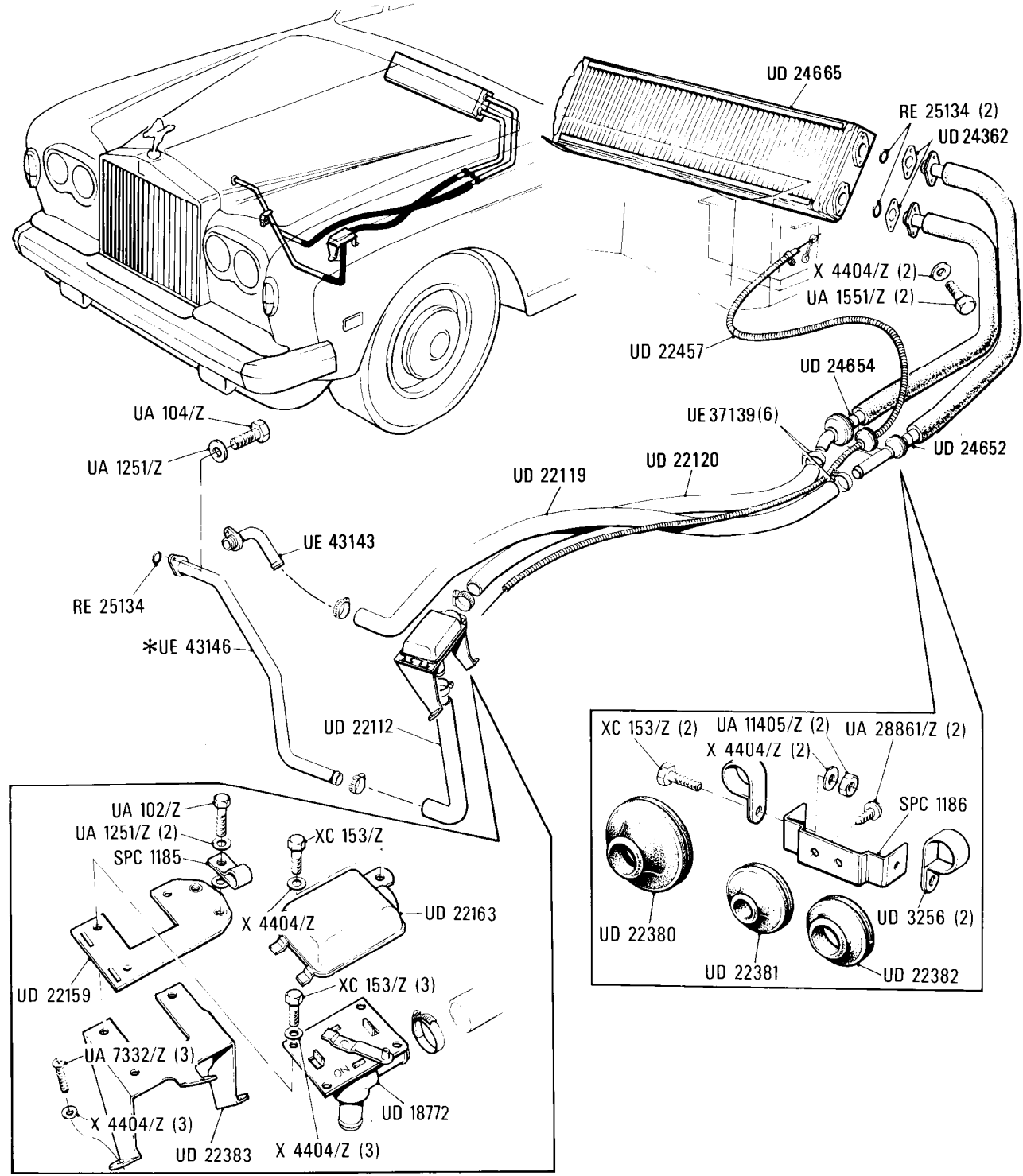
Automatic Air Conditioning System  
Heater, Heater Tap Pipes & Fittings

Car serial number

SCAZD42A7ECX08879, 08885,  
08887, 08905 onwards

Parts marked thus \* refer to Additional Information below

◀ Left-hand ▶ Right-hand



Additional Information

\*UE 43146 Non P.I. cars  
UE 43205 P.I. cars only

© Rolls-Royce Motors Limited 1984

C4-003-03

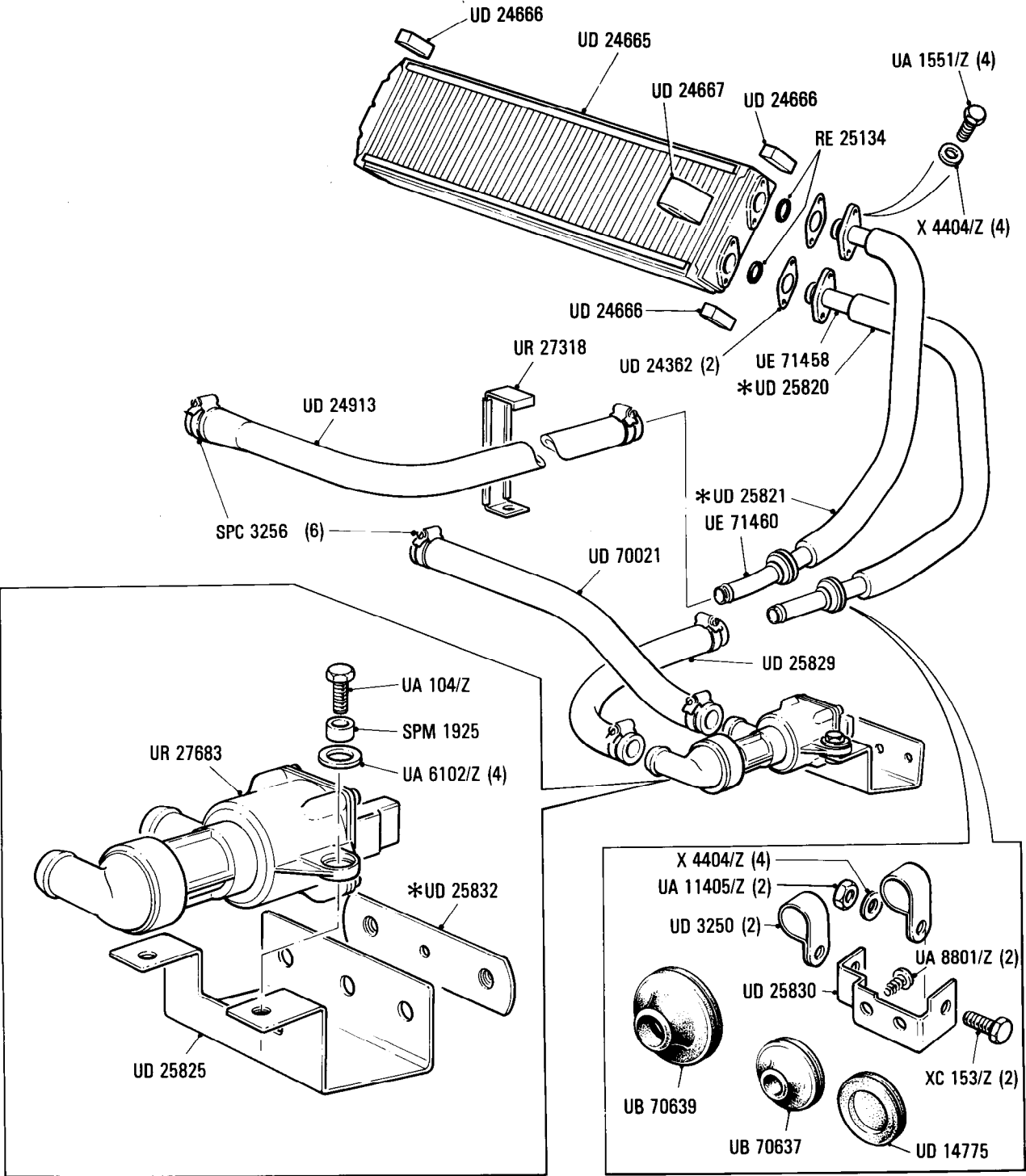
Rolls-Royce  
Corniche  
Bentley  
Continental

Car serial number

SCAZD02A0HCX20010 to 21730  
Except 21729

**Electrical System**  
Heater, Pipes, Electrically Operated Water Tap & Fittings

Parts marked thus \* refer to Additional Information below ◀ Left-hand ▶ Right-hand



**Additional Information**

- \* UD 25832 Bracket  
UA 1205Z Stud } R.H. Cars
- \* UD 25820 Insulation tube only 18,500 long  
UD 25821 Insulation tube only 20,500 long

C4-004-02

Rolls-Royce  
Corniche

Bentley  
Continental

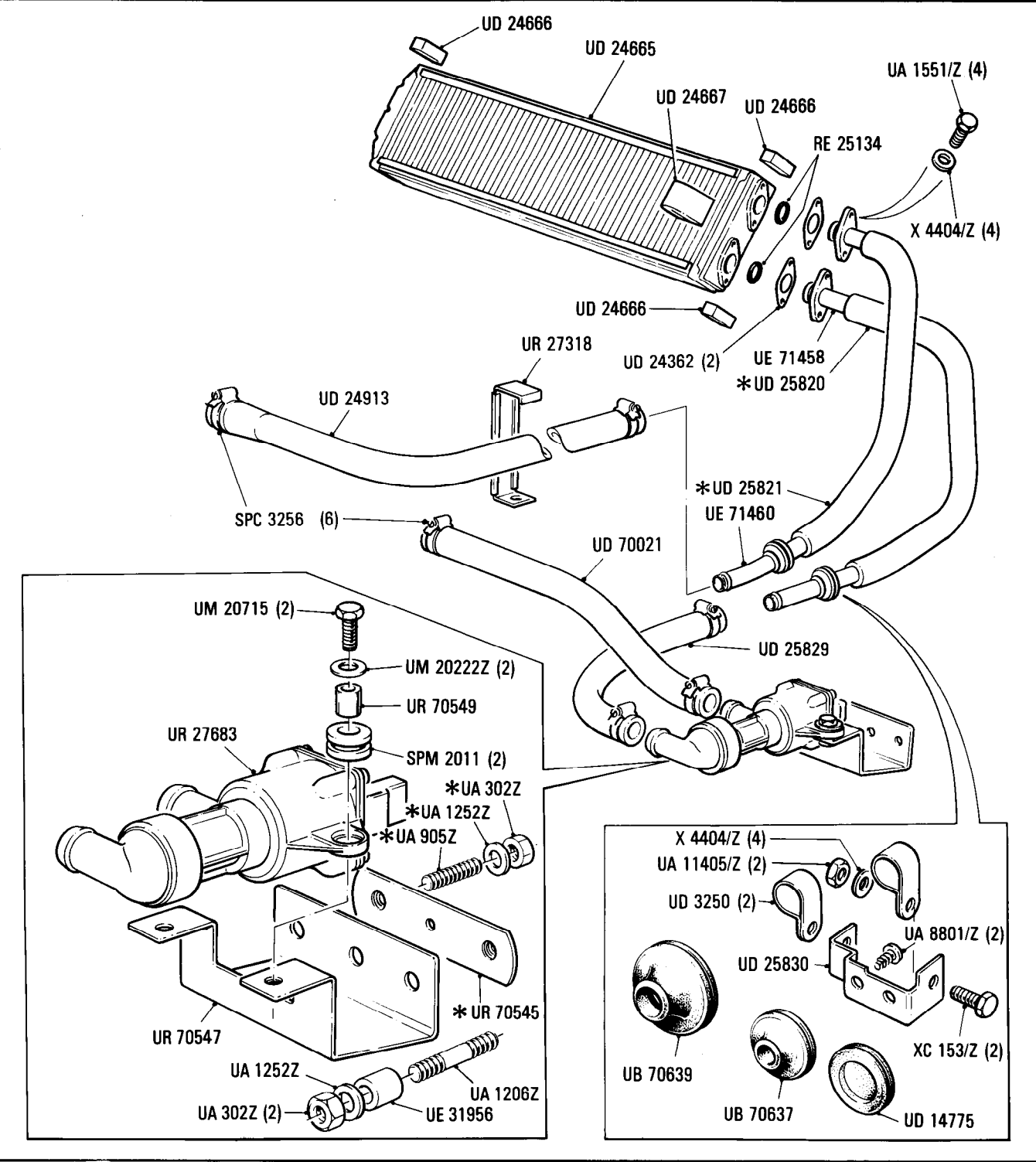
Car serial number

SCAZD02A5JCX21729, 21731 to 29290

**Automatic Air Conditioning System**  
Heater, Pipes, Electrically Operated Water Tap & Fittings

Parts marked thus \* refer to Additional Information below

◀ Left-hand ▶ Right-hand



**Additional Information**

\* UR 70545 } RHD cars  
UA 905Z }

\* UD 25821 Insulation sleeve 20.500 in long  
UD 25820 Insulation sleeve 18.500 in long

C5•001•01

Rolls-Royce  
Corniche  
Convertible

Bentley  
Corniche  
Convertible

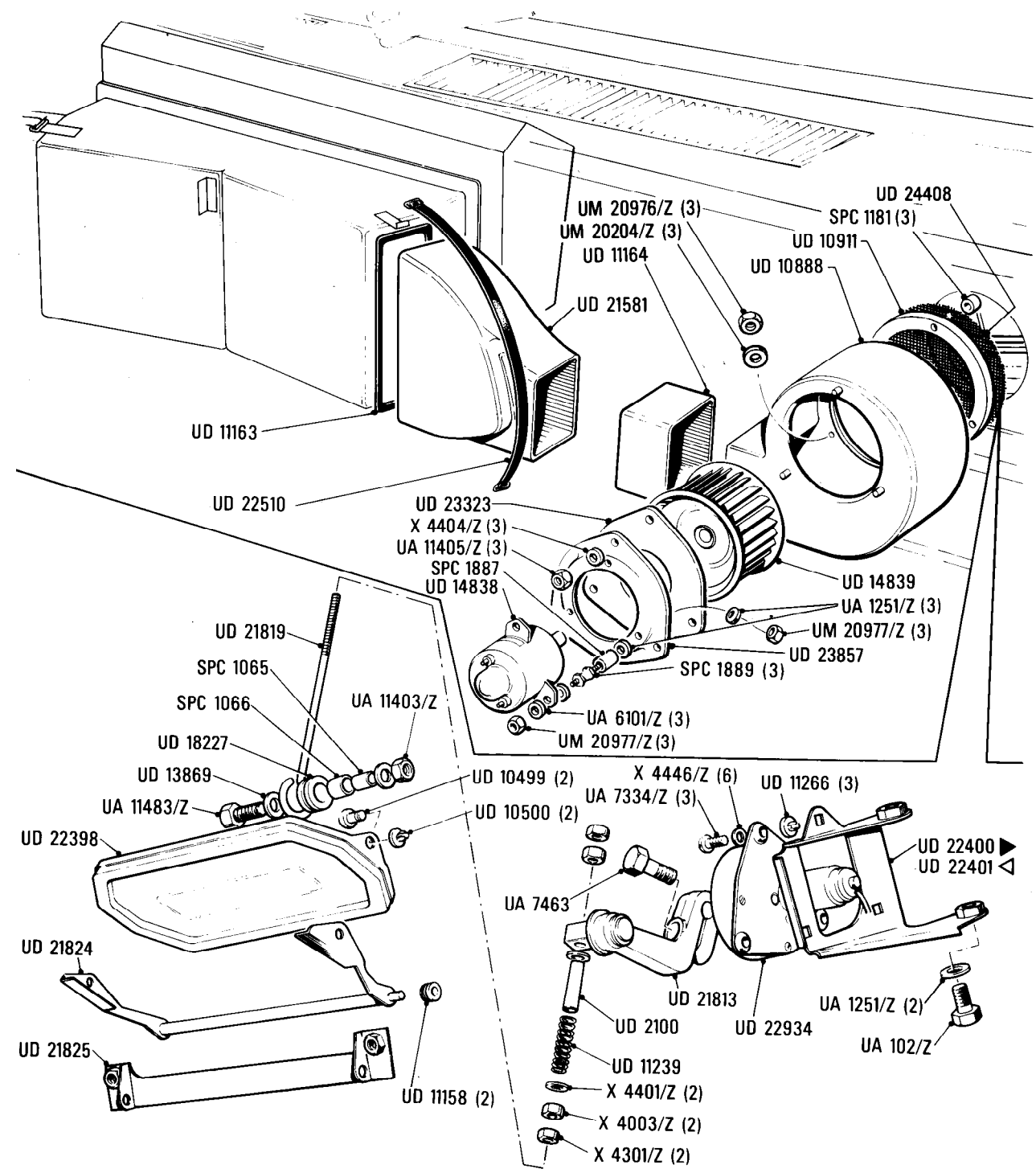
Car serial number

USA only  
SCAZD0006CCH05037 - 10079,  
Other than USA  
SCAZD0006CCH05037 - 10116,

Automatic Air Conditioning System  
Fans, Ducts & Recirculation Flaps

Parts marked thus \* refer to Additional Information below

◀ Left-hand ▶ Right-hand



Additional Information

© Rolls-Royce Motors Limited 1984

C5·002·00

Rolls-Royce  
Corniche

Bentley  
Continental

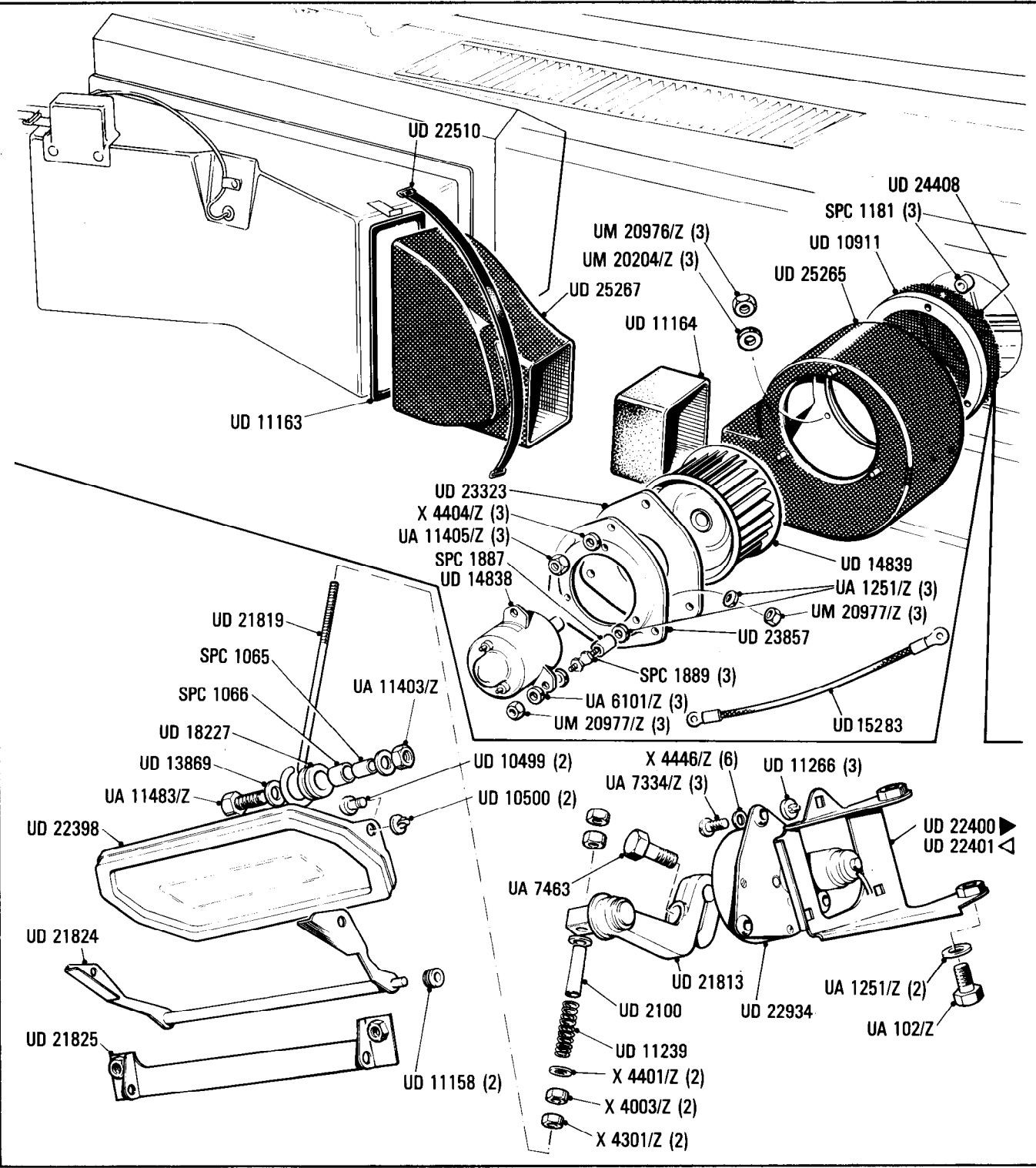
**Automatic Air Conditioning System**  
Fans, Ducts & Recirculation Flaps (A.R.A.)

Car serial number

USA Cars only  
SCAZD42A3FCX10081 onwards  
Other than USA  
SCAZD0000FCX10123 onwards

Parts marked thus \* refer to Additional Information below

◀ Left-hand ▶ Right-hand



Additional Information

© Rolls-Royce Motors Limited 1984

Rolls-Royce	Bentley
Corniche	Corniche
Convertible	Convertible

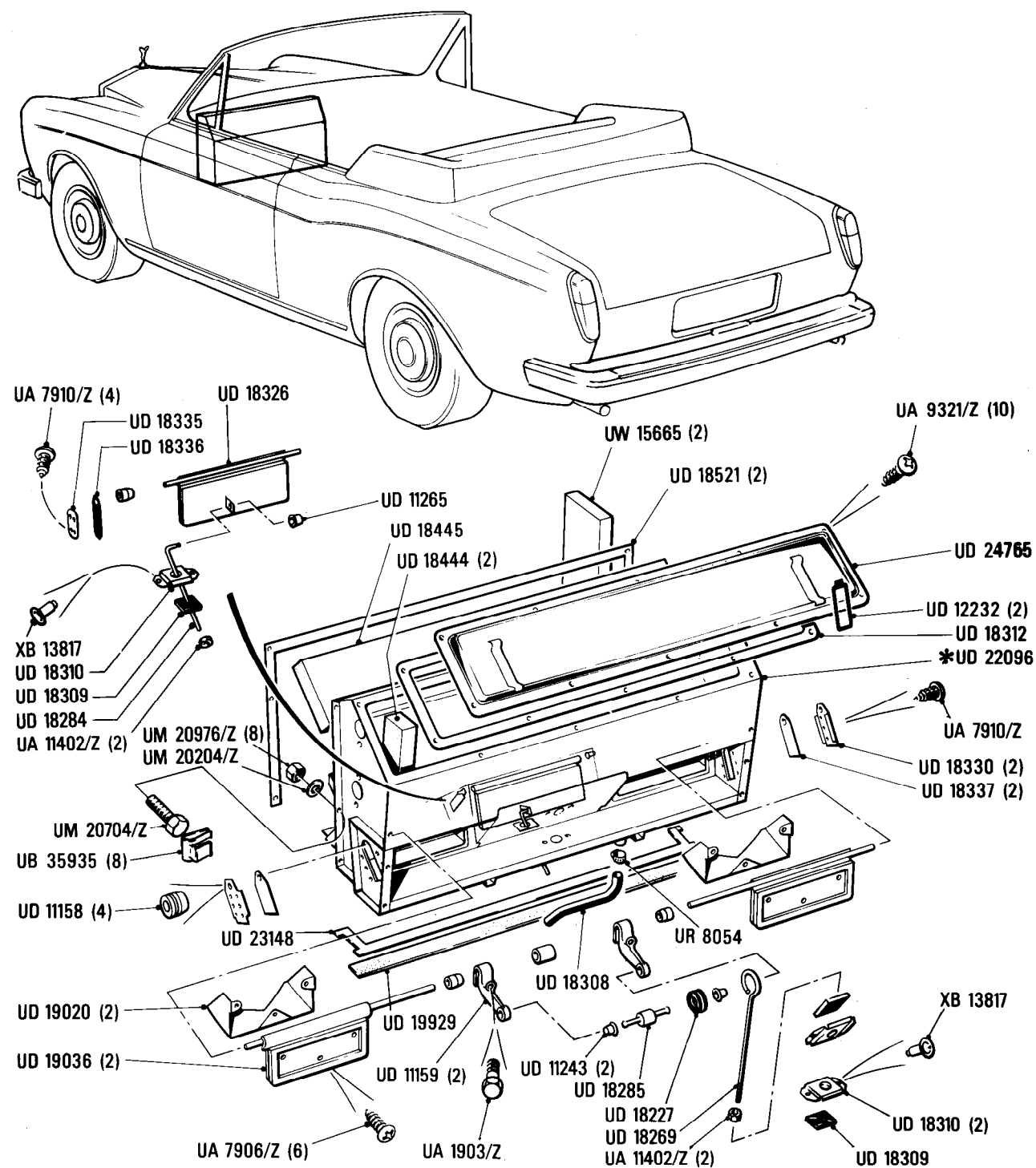
## Automatic Air Conditioning System Heater Box, Flaps & Fittings

**Car serial number**

From VIN number  
**SCAZD0006CCH05037 to 08839**

Parts marked thus \* refer to Additional Information below

◀ Left-hand ▶ Right-hand



### Additional Information

© Rolls-Royce Motors Limited 1984

\*UD 22096 R.H. Corniche Convertible  
UD 24138 L.H. Corniche Convertible

C6·002·00

Rolls-Royce  
Corniche

Bentley  
Continental

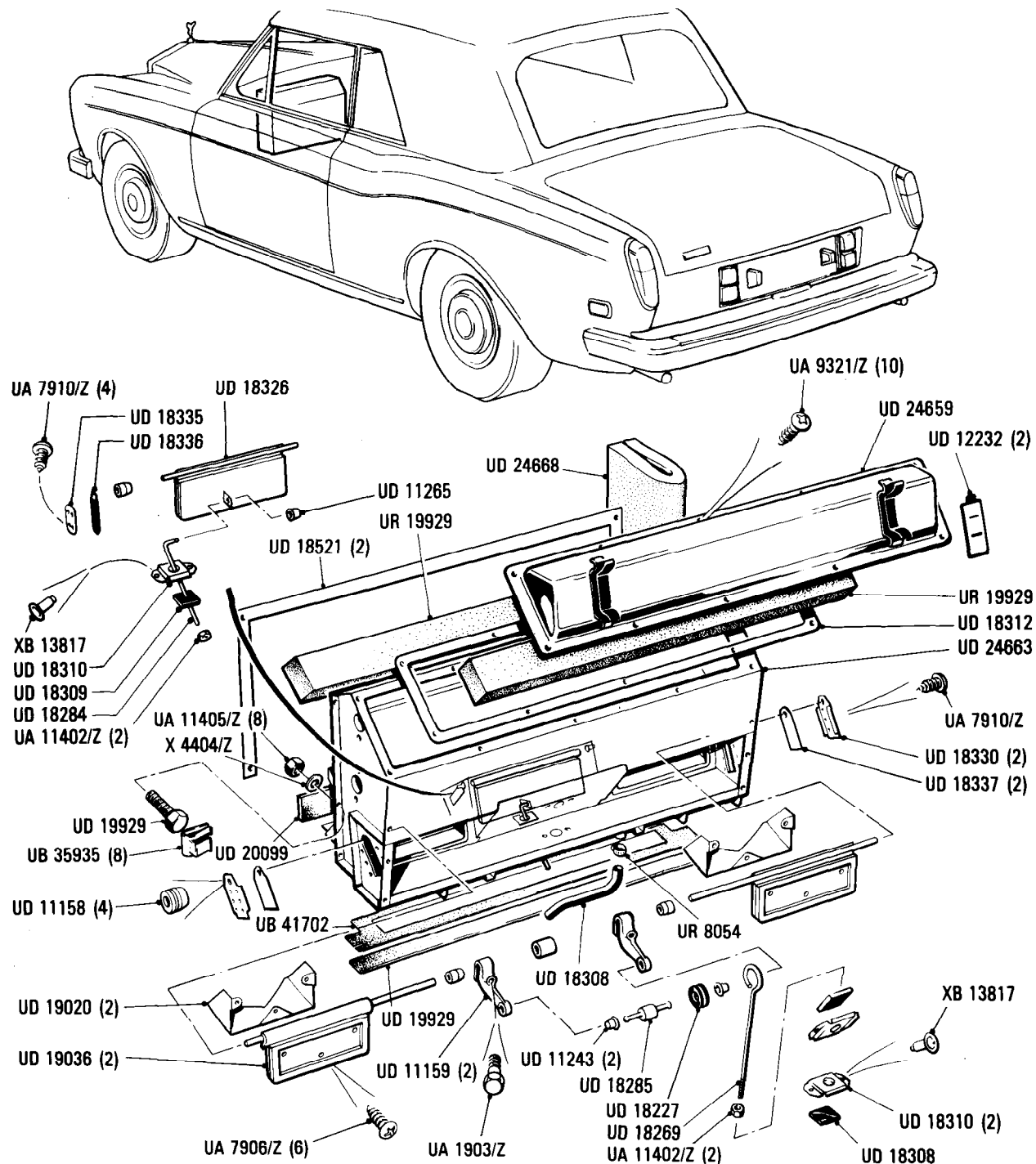
Car serial number

SCAZD42A3ECX08879 to 10116  
Except 10081

# Automatic Air Conditioning System Heater Box, Flaps & Fittings

Parts marked thus \* refer to Additional Information below

◀ Left-hand ▶ Right-hand



Additional Information

© Rolls-Royce Motor Cars Limited 1987

C6-003-01

Rolls-Royce  
Corniche

Bentley  
Continental

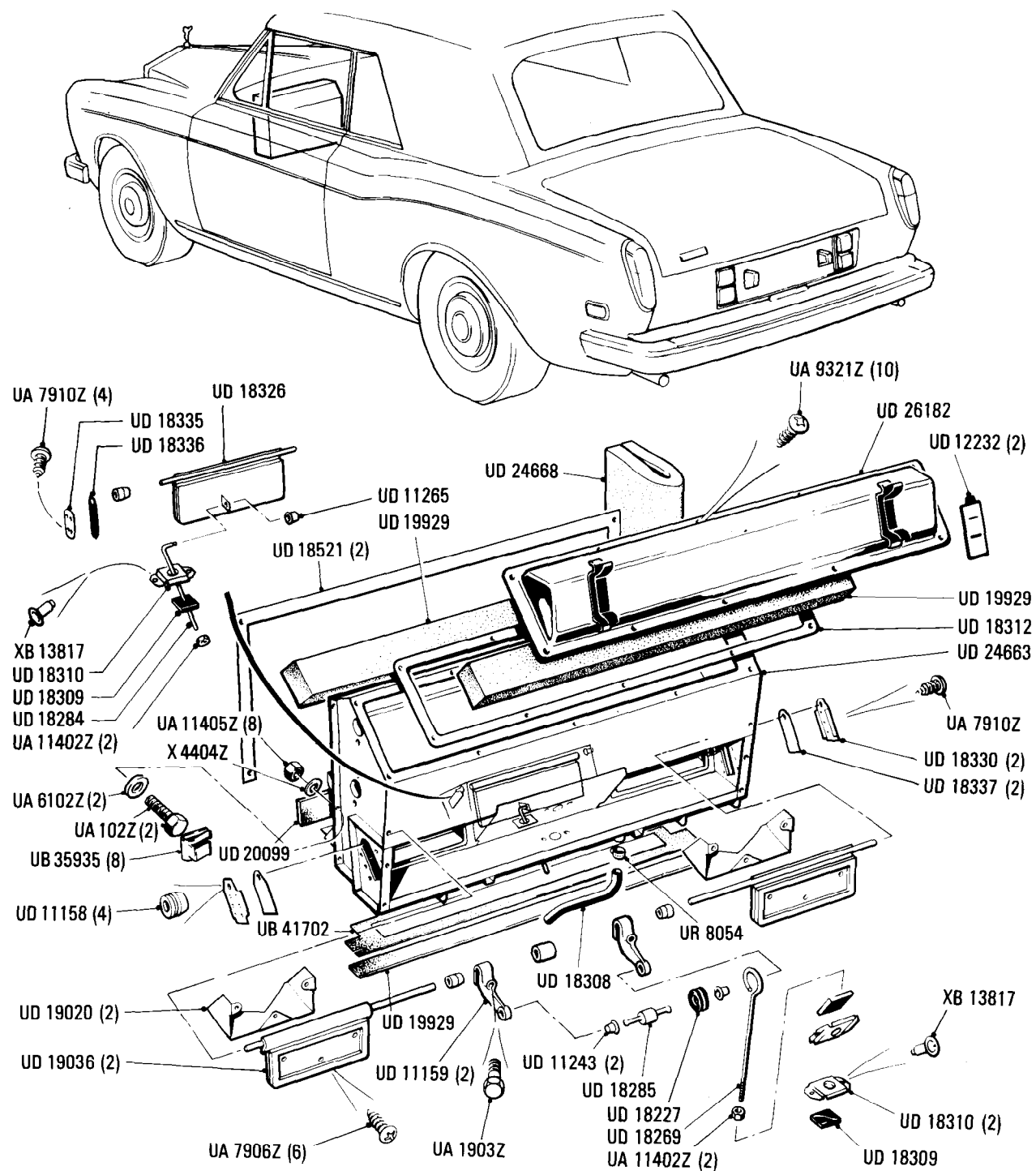
Car serial number

SCAZD42A3FCX10081 to 16968  
Except 10116

# Automatic Air Conditioning System Heater Box, Flaps & Fittings

Parts marked thus \* refer to Additional Information below

◀ Left-hand ▶ Right-hand



Additional Information

© Rolls-Royce Motor Cars Limited 1987

C6·004·01

Rolls-Royce  
Corniche

Bentley  
Continental

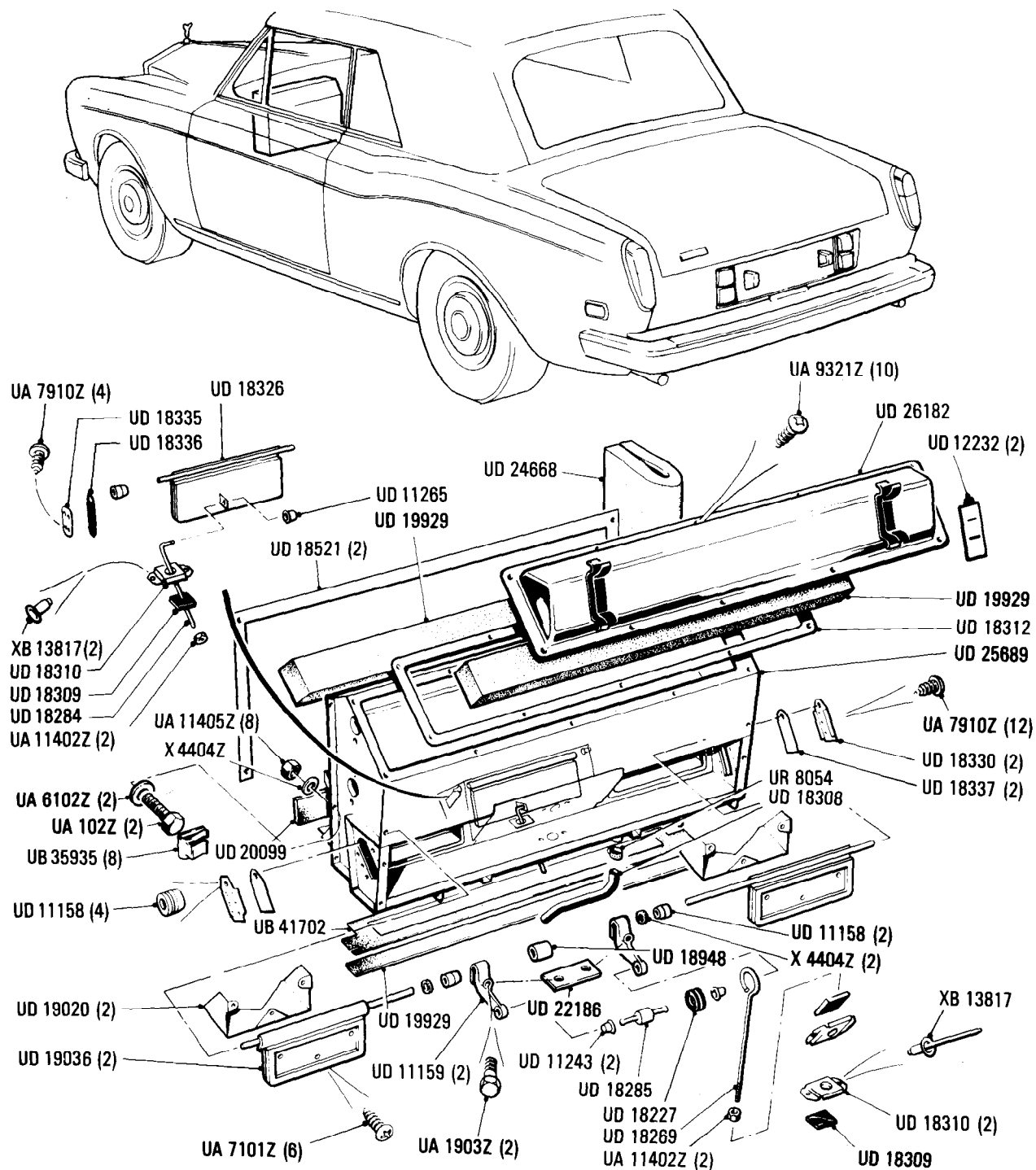
Car serial number

SCAZD02A0HCX20010 to 29290

## Automatic Air Conditioning System Heater Box, Flaps & Fittings

Parts marked thus \* refer to Additional Information below

◁ Left-hand ▷ Right-hand



Additional Information

© Rolls-Royce Motor Cars Limited 1987

C7•001•00

Rolls-Royce  
Corniche  
Convertible

Bentley  
Corniche  
Convertible

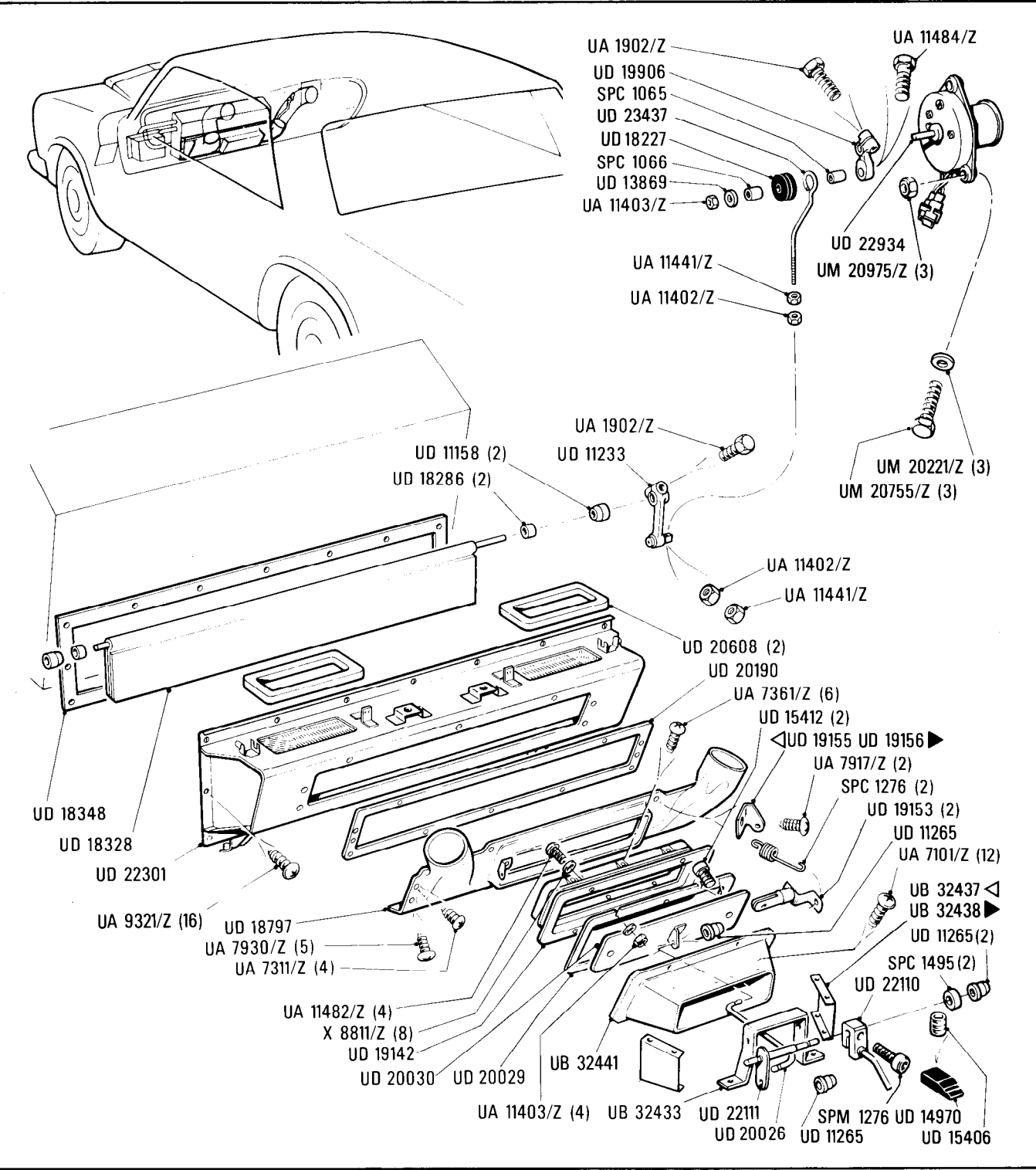
Car serial number

SCAZD0006CCH05037 to  
SCBZD42A9FCX10372

**Automatic Air Conditioning System**  
Distribution Box, Centre Outlet Flap & Controls

Parts marked thus \* refer to Additional Information below

◁ Left-hand ▷ Right-hand



Additional Information

© Rolls-Royce Motors Limited 1984

C7-002-01

Rolls-Royce  
Corniche

Bentley  
Continental

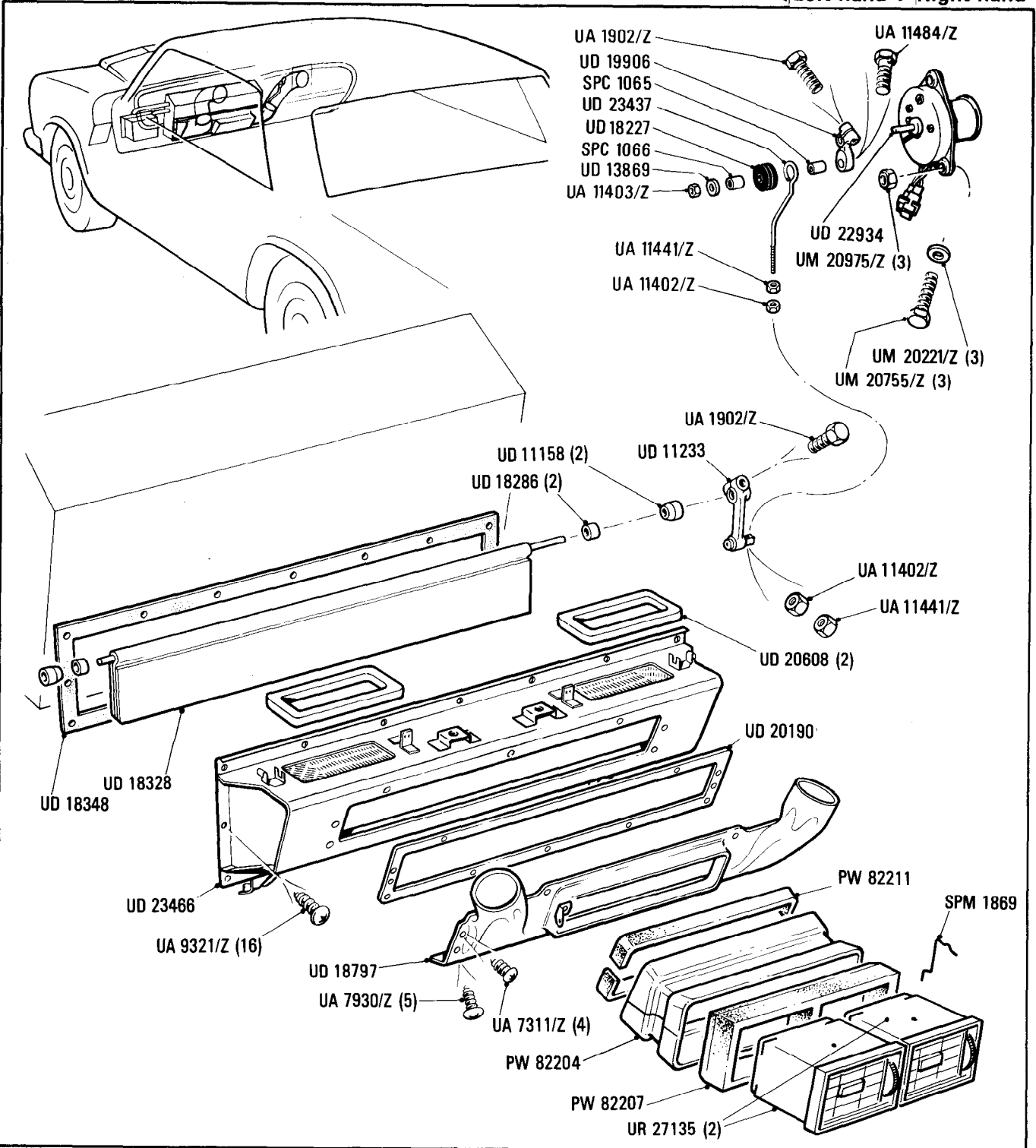
# Automatic Air Conditioning System Distribution Box, Centre Outlet Flap & Controls

Car serial number

SCAZD42A5GCX13162 to 16968

Parts marked thus \* refer to Additional Information below

◀ Left-hand ▶ Right-hand



Additional Information

© Rolls-Royce Motors Limited 1987

C7·003·01

Rolls-Royce  
Corniche

Bentley  
Continental

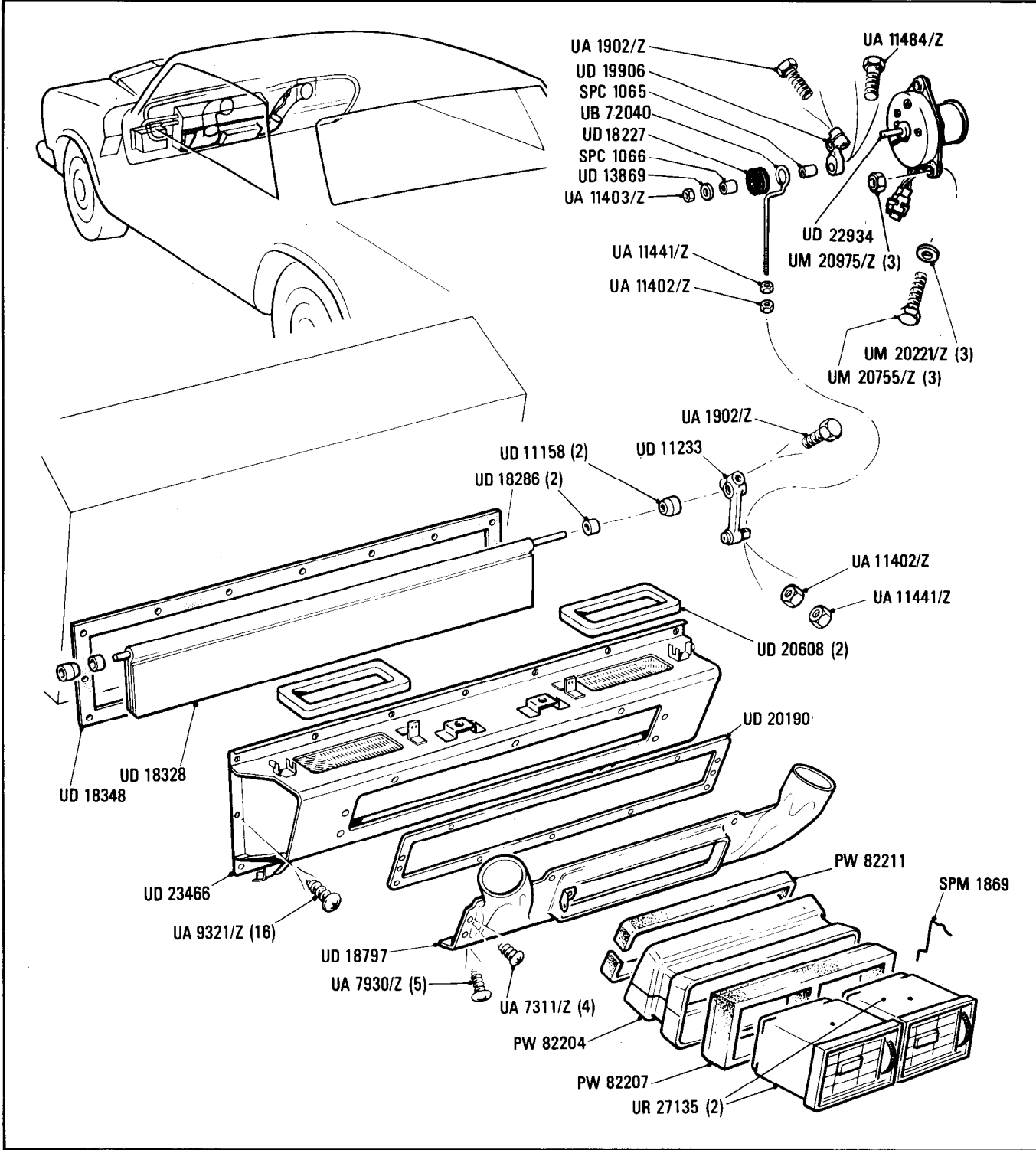
**Automatic Air Conditioning System**  
Distribution Box, Centre Outlet Flap & Controls

Car serial number

SCAZD02A0HCX20010 to 29290

Parts marked thus \* refer to Additional Information below

◀ Left-hand ▶ Right-hand



Additional Information

© Rolls-Royce Motor Cars Limited 1987

C8-001-02

Rolls-Royce  
Corniche  
Convertible

Bentley  
Corniche  
Convertible

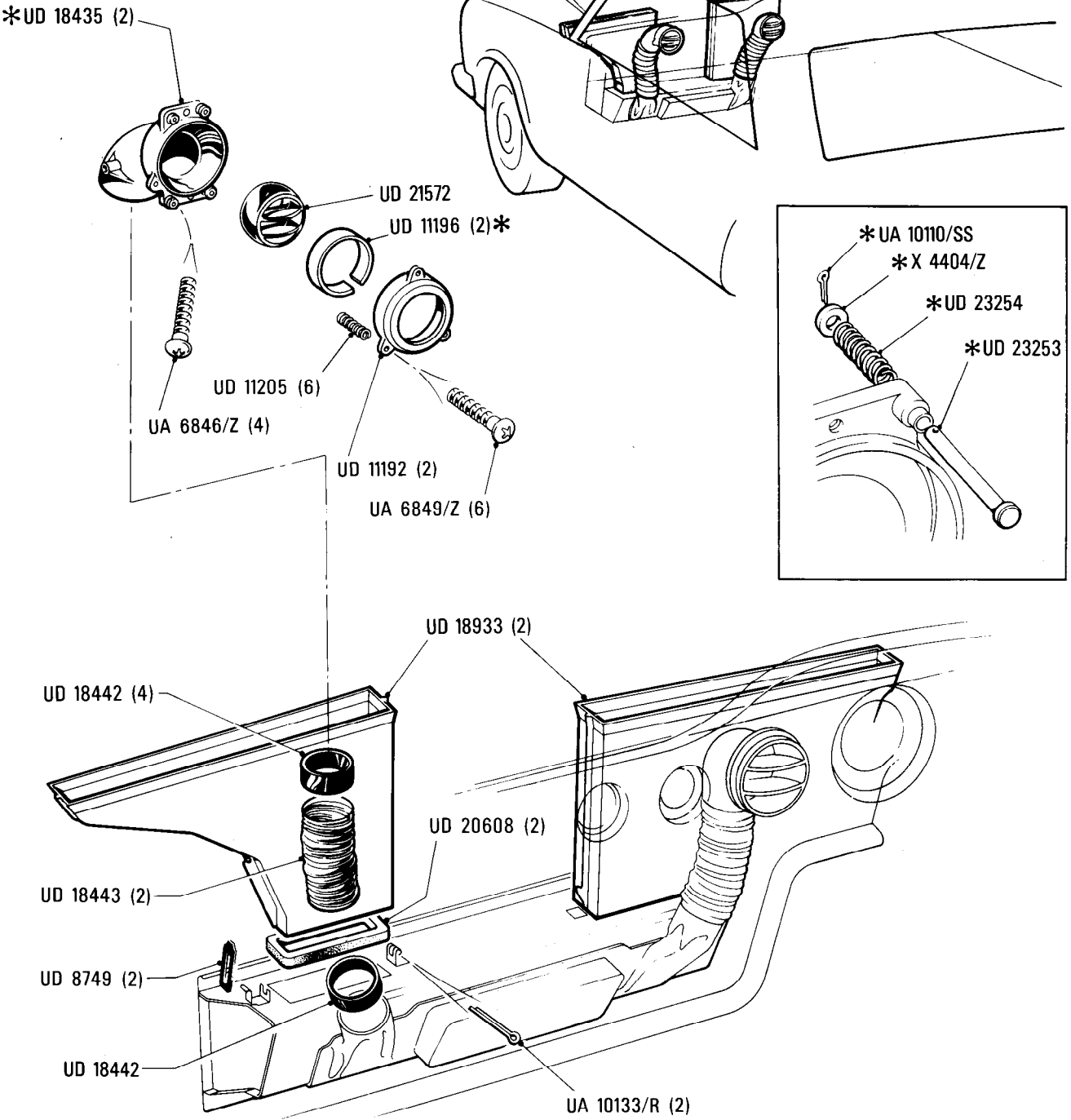
Car serial number

From VIN number  
SCAZD0006CCHO5037 to 10372

**Automatic Air Conditioning System**  
**Demister Ducts & Facia Vents**

Parts marked thus \* refer to Additional Information below

◀ Left-hand ▶ Right-hand



**Additional Information**

© Rolls-Royce Motors Limited 1991

- \* UD 18435 Other than EEC Countries  
UD 23252 EEC Countries
- \* UD 11196 0.062 in } Alternatives  
UD 21111 0.093 in }
- \* UA 10110/SS  
X 4404/Z  
UD 23254  
UD 23253

C8-002-02

Rolls-Royce  
Corniche  
Bentley  
Continental

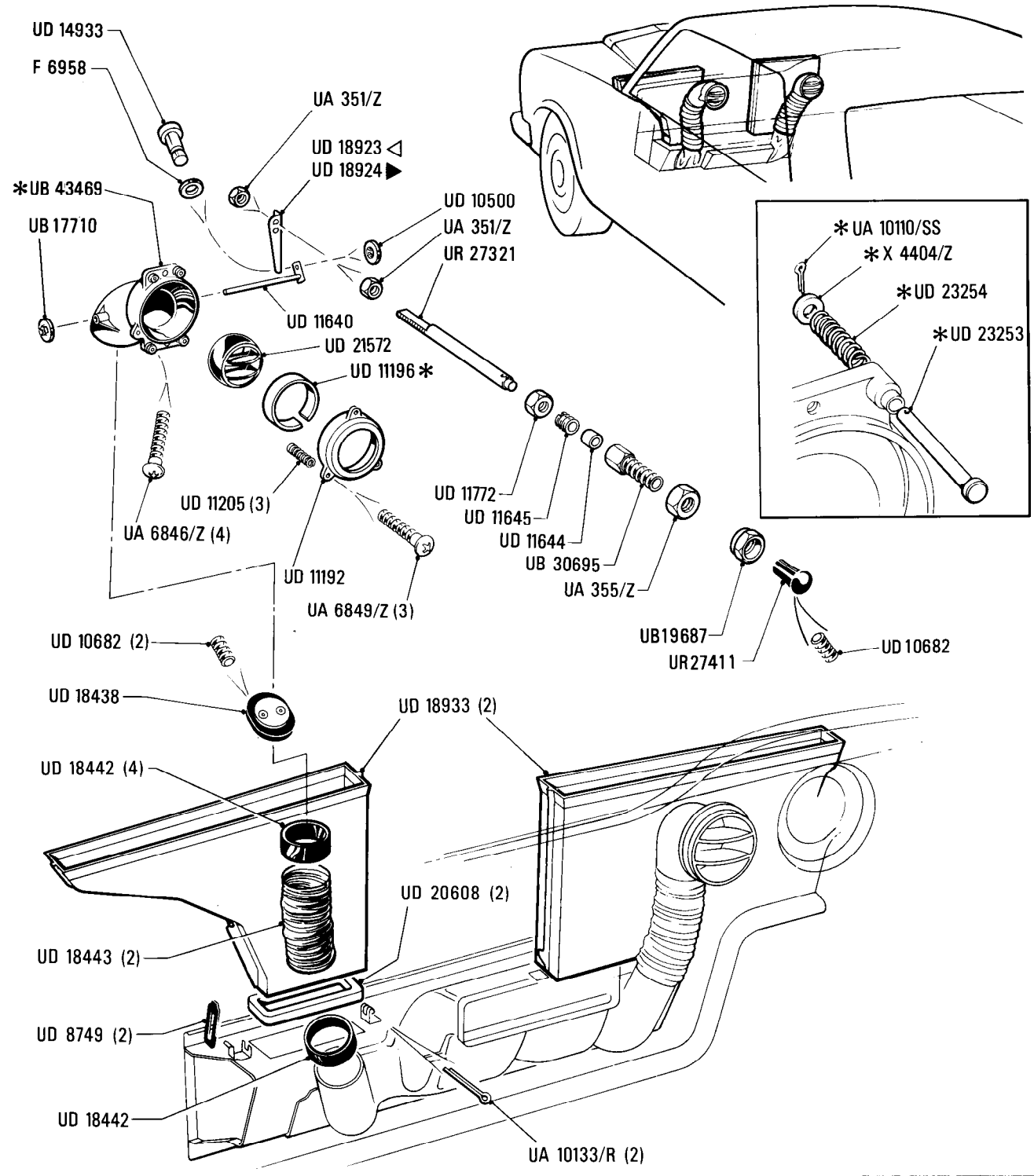
Car serial number

SCAZD42A5GCX13162 to 29290

Automatic Air Conditioning System  
Demister Ducts & Facia Vents

Parts marked thus \* refer to Additional Information below

◀Left-hand ▶Right-hand



Additional Information

© Rolls-Royce Motors Limited 1991

- \*UB 43469 Cars for Europe, Middle East, Japan, UK, & Eire
- UB 43468 Cars for USA, Canada, S. Africa, Hong Kong, Australia, New Zealand, & Bahamas
- \*UD 11196 0.062 in } Alternatives
- UD 21111 0.093 in }
- \*UA 10110/SS
- \*X4404/Z
- \*UD 23254
- \*UD 23253

Europe, UK, Eire, Japan

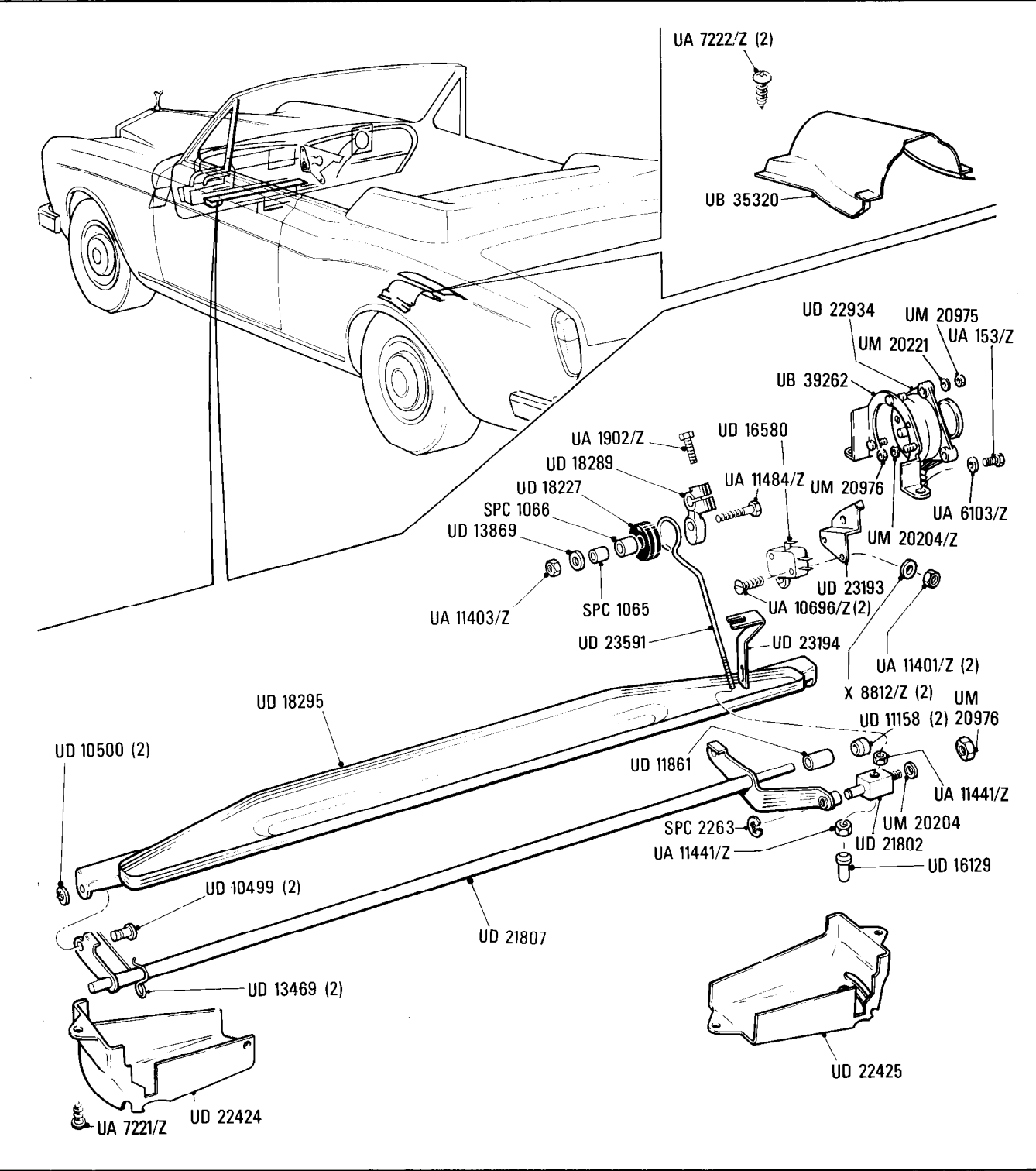
Car serial number

SCAZD0006CCH0537 to SCAZD42A9FCX10165.

Automatic Air Conditioning System  
Lower Quantity Flaps & Controls

Parts marked thus \* refer to Additional Information below

◀ Left-hand ▶ Right-hand



Additional Information

C9·002·02

Rolls-Royce  
Corniche

Bentley  
Continental

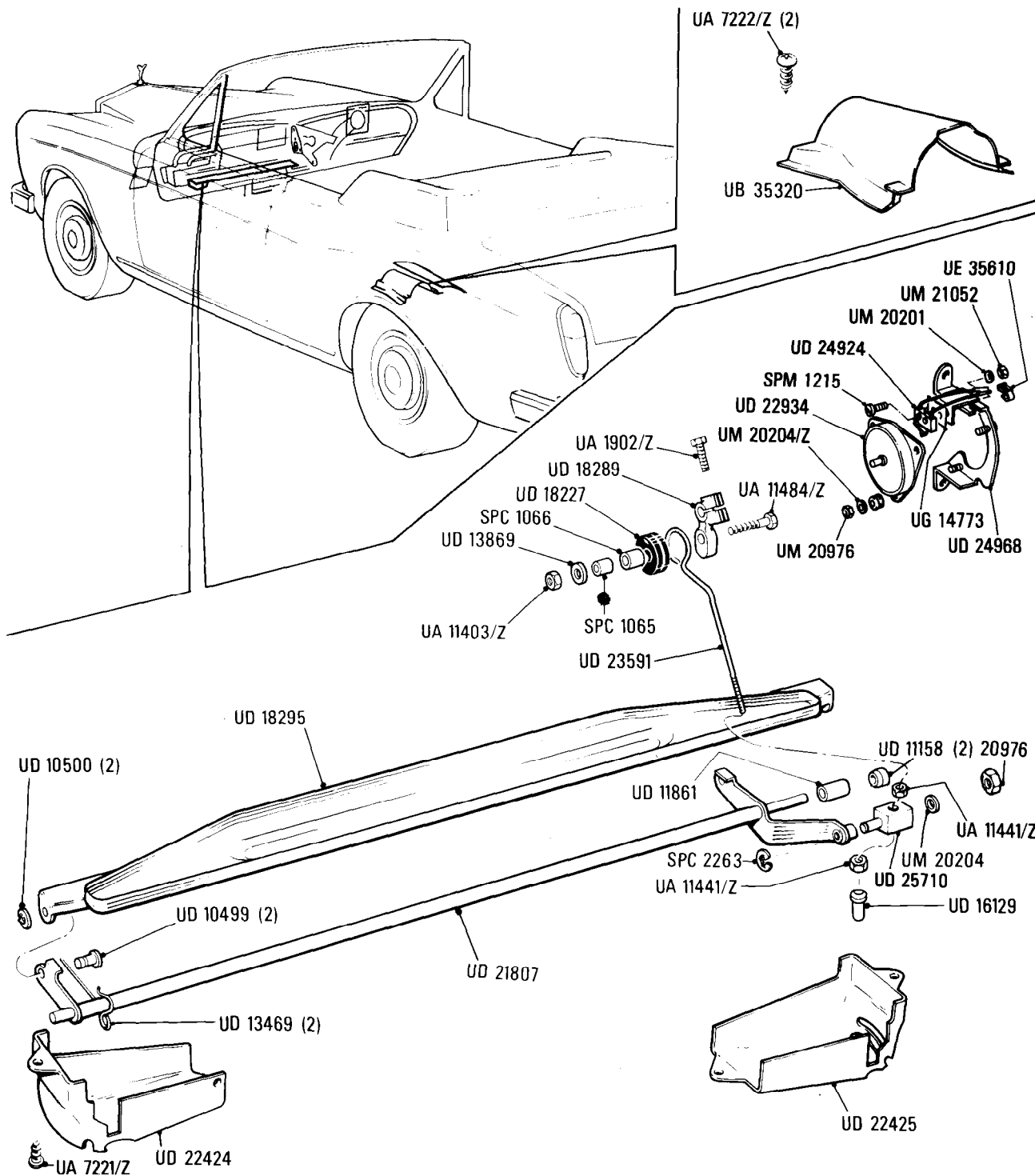
## Automatic Air Conditioning System Lower Quantity Flaps & Controls

Car serial number

SCAZD42A0FCX10166 to 29290

Parts marked thus \* refer to Additional Information below

◀ Left-hand ▶ Right-hand



Additional Information

© Rolls-Royce Motors Limited 1984