

TWO-DOOR MOTOR CARS 1980-1989

Hydraulic and Braking System Menu

G1	Hydraulic reservoir
G2	Brake pump mineral oil
G3	Accumulator valve mineral oil
G4	Distribution valves and foot pedal lever mounting
G5	Not used
G6	Not used
G7	Distributor valve, G-conscious valve and brake modulator
G8	Caliper front brakes
G9	Calipers rear brakes
G10	Height control valves
G11	Not used
G12	Not used
G13	Not used
G14	Not used
G15	Flexible hoses and pipes
G16	Mounting brackets and connections
G17	Clips and grommets

G1•001•00

Rolls-Royce
Corniche

Bentley
Continental

Car serial number

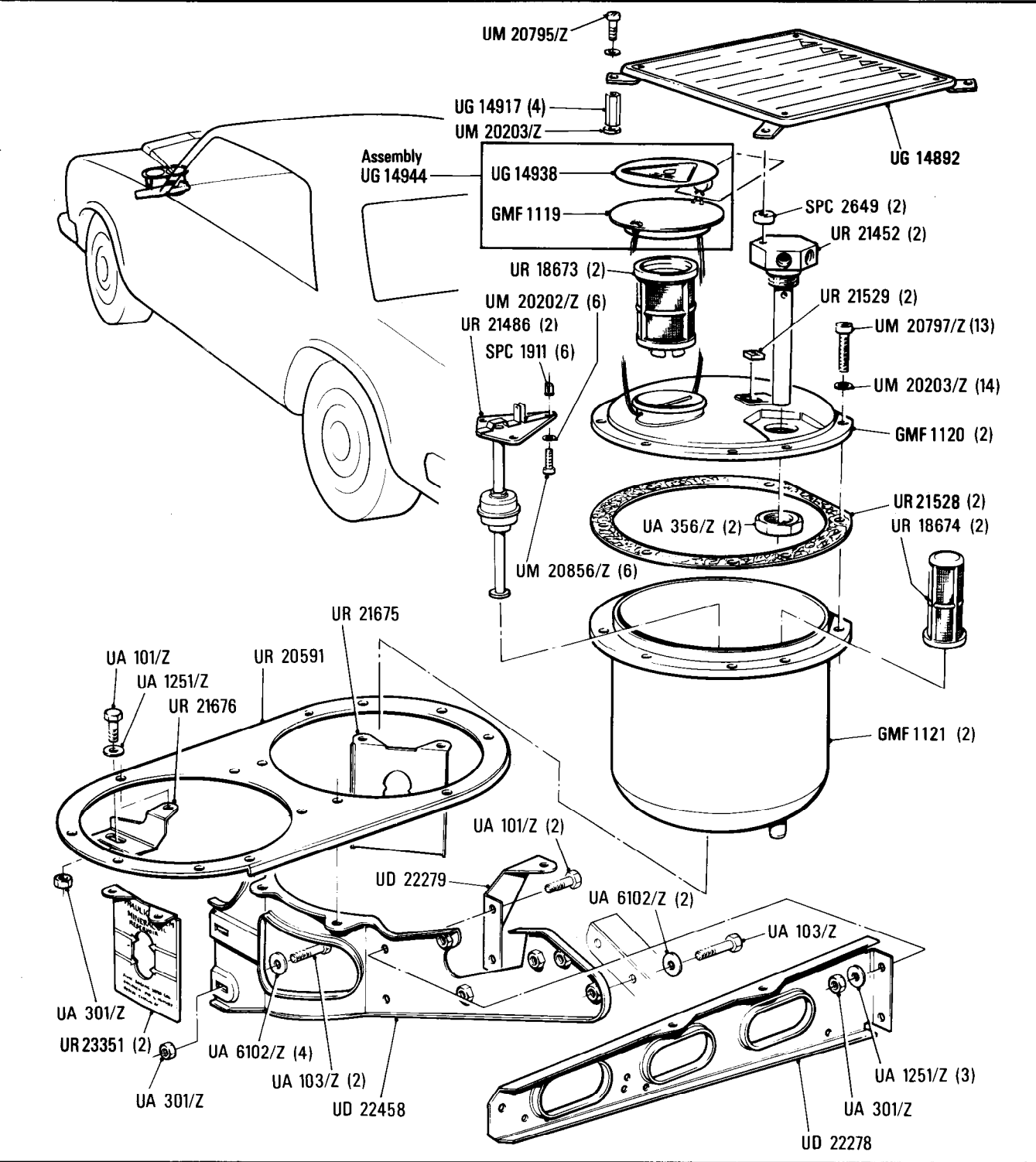
SCAZD0006CCH05037 to 09399

Hydraulic Braking System

Hydraulic Reservoir Hydraulic System Mineral Oil

Parts marked thus * refer to Additional Information below

◀ Left-hand ▶ Right-hand



Additional Information

© Rolls-Royce Motor Cars Limited 1987

G1•002•01

Rolls-Royce
CornicheBentley
Continental

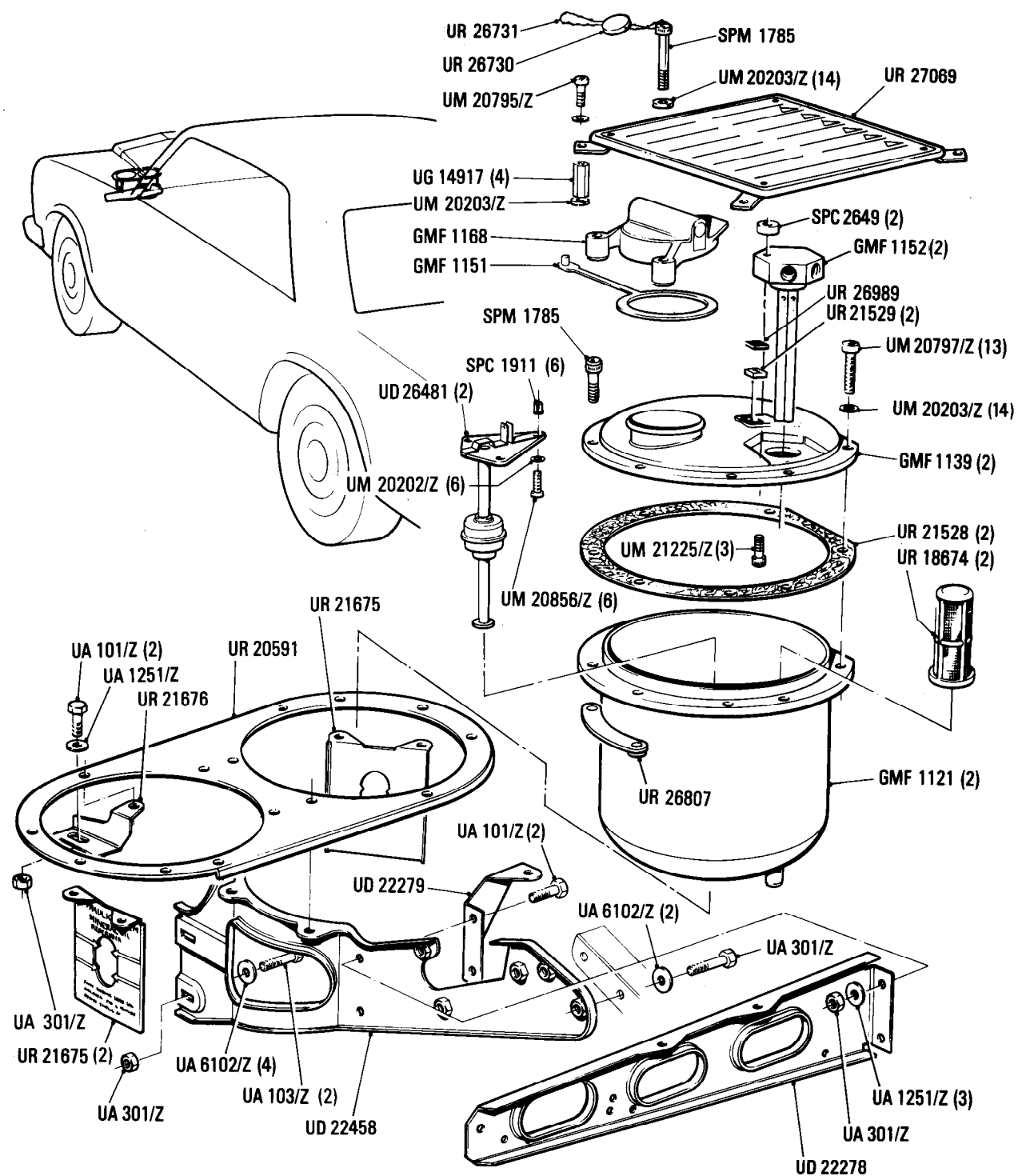
Car serial number

SCAZD0006FCX09400 to 16968

Hydraulic and Braking System
Hydraulic Reservoir Hydraulic System Mineral Oil

Parts marked thus * refer to Additional Information below

◀ Left-hand ▶ Right-hand



Additional Information

© Rolls-Royce Motor Cars Limited 1991

G1•003•04

Rolls-Royce
Corniche

Bentley
Continental

Car serial number

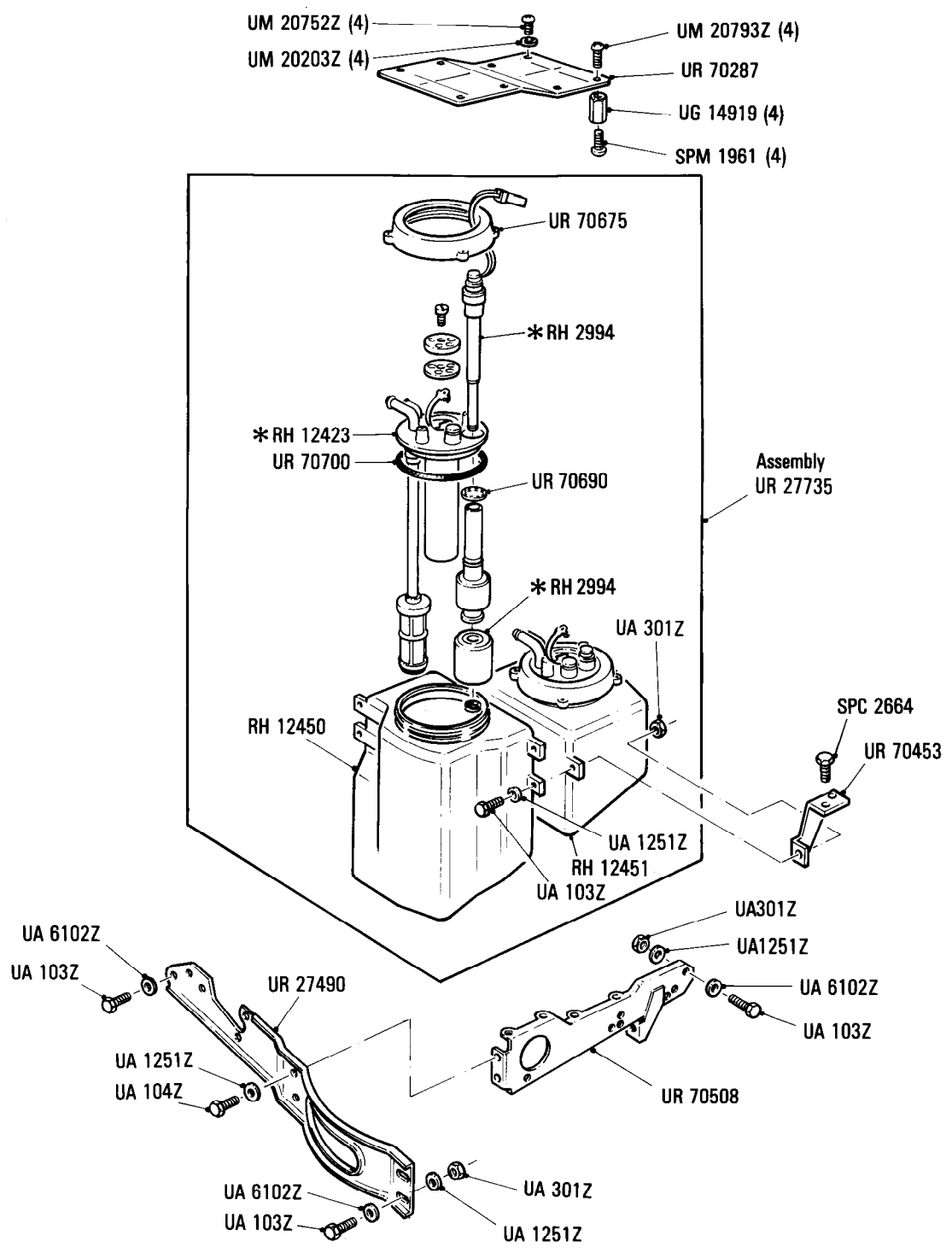
SCAZD0000HCX20010 to 24637
including 24638 to 24653

Hydraulic and Braking System

Hydraulic Reservoir & Fittings Hydraulic Mineral Oil System

Parts marked thus * refer to Additional Information below

◀ Left-hand ▶ Right-hand



Additional Information

© Rolls-Royce Motor Cars Limited 1990

- * RH 2994 Level indicator kit for UR 27720 Assy
RH 2993 Level indicator kit for UR 27721 Assy
- * RH 12423 Large reservoir
RH 12422 Small reservoir

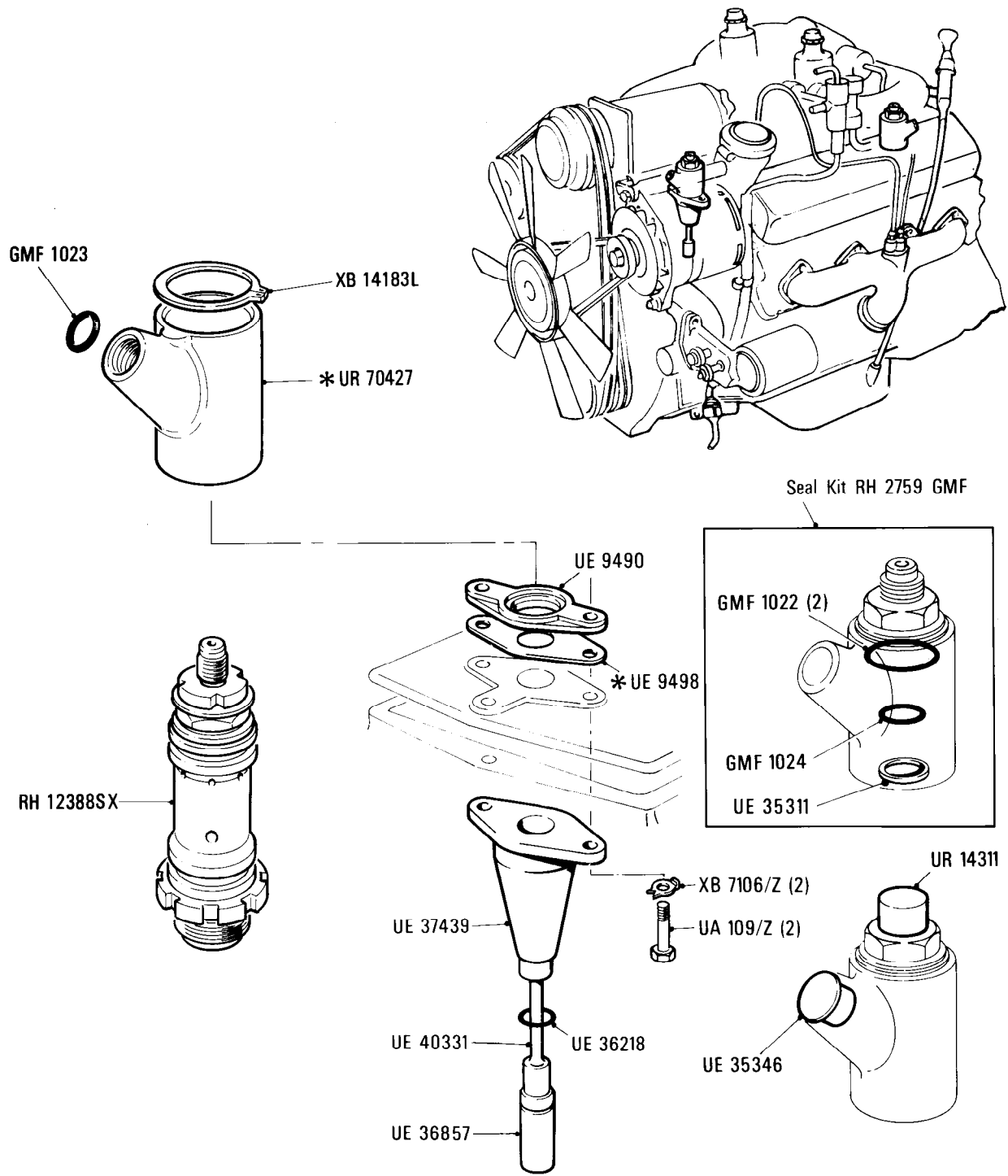
Hydraulic & Braking System
Brake Pump (Mineral Oil System)

Car serial number

SCAZD0006CCH05037 to 07990
Except 07817

Parts marked thus * refer to Additional Information below

◀ Left-hand ▶ Right-hand



Additional Information

© Rolls-Royce Motor Cars Limited 1987

* UE 9498 Shim .003 in
UE 9499 Shim .007 in

G2-002-03

Rolls-Royce
Corniche
Bentley
Continental

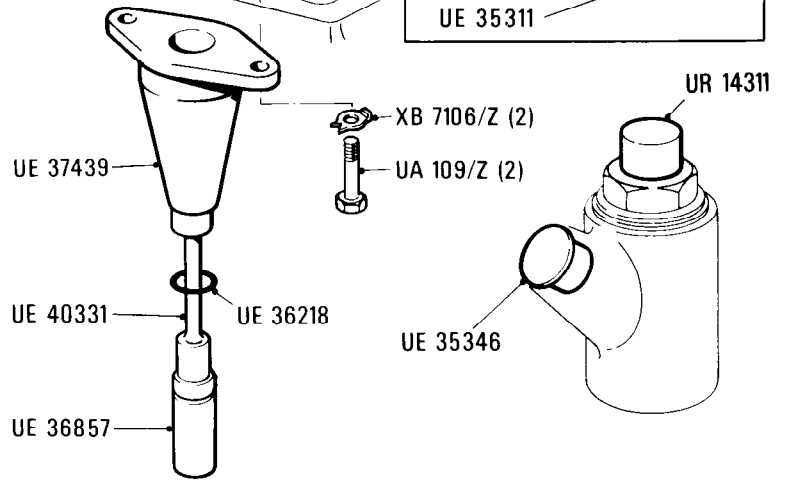
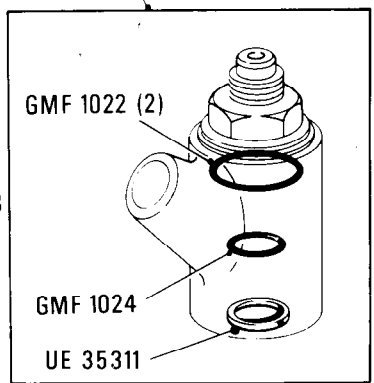
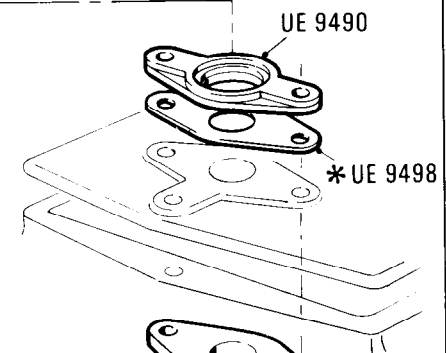
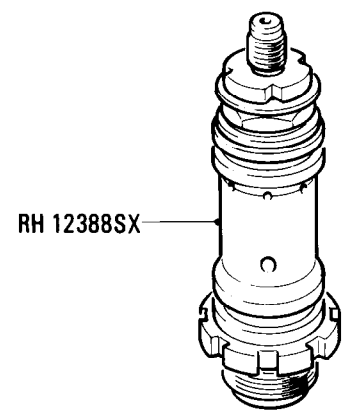
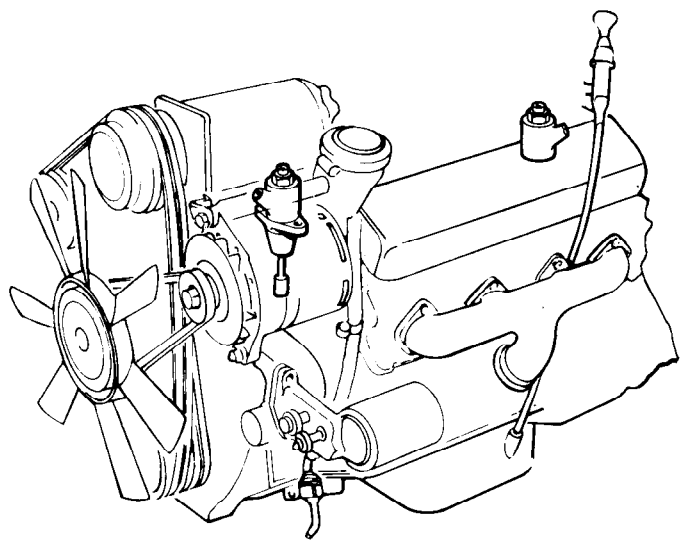
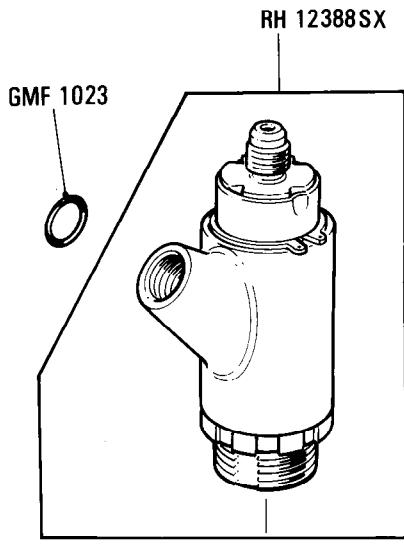
Car serial number

SCAZD0009ECX07817, 07990 to 16968

Hydraulic & Braking System
Brake Pump (Mineral Oil System)

Parts marked thus * refer to Additional Information below

◀ Left-hand ▶ Right-hand



Additional Information

* UE 9498 Shim .003 in } As required
UE 9499 Shim .007 in }

© Rolls-Royce Motor Cars Limited 1987

G2 003 03

Rolls-Royce
Corniche

Bentley
Continental

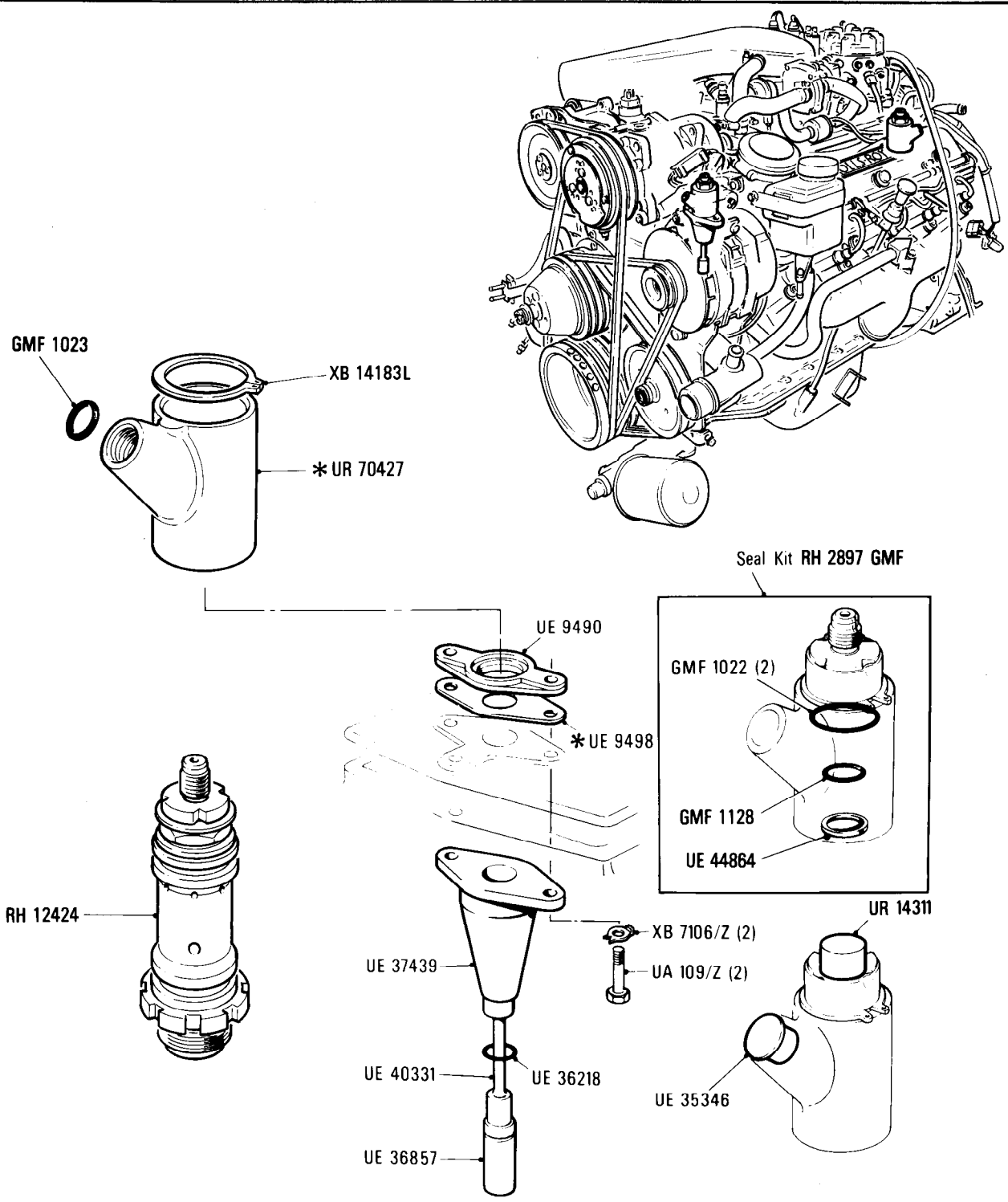
Car serial number

SCAZD0000HCX20010 to 29290

Hydraulics & Braking System
Brake Pumps (Hydraulic Mineral Oil)

Parts marked thus * refer to Additional Information below

◀ Left-hand ▶ Right-hand



Additional Information

- * UE 9498 Shim .003 in
- UE 9499 Shim .007 in
- * UR 70427 Front brake pump
- UR 27427 Rear brake pump

© Rolls-Royce Motor Cars Limited 1987

G3·001·00

Rolls-Royce
Corniche

Bentley
Continental

Car serial number

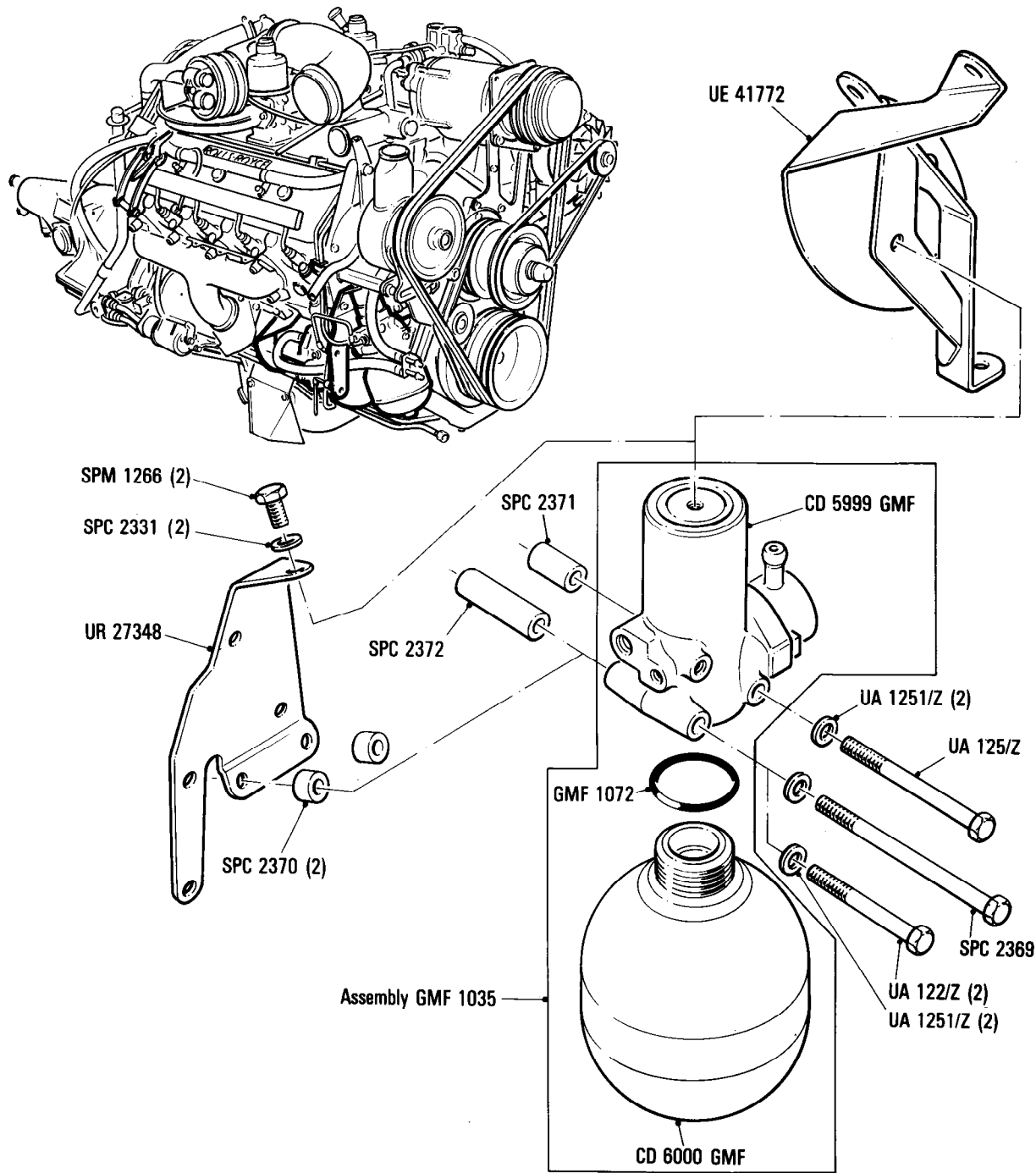
SCAZD0006CCH05037 to 16968

Hydraulics and Braking System

Accumulator and Accumulator Valve Hydraulic System Mineral Oil

Parts marked thus * refer to Additional Information below

◁ Left-hand ▷ Right-hand



Additional Information

© Rolls-Royce Motor Cars Limited 1987

- * UE 41772 Horizontal accumulator bracket – rear
- UR 27348 Vertical accumulator bracket – front
- SPC 2369 Bolt horizontal accumulator bracket
- UA 125/Z Bolt horizontal accumulator bracket
- SPC 2370 Distance piece vertical accumulator bracket
- SPC 2371 Distance piece horizontal accumulator bracket
- SPC 2372 Distance piece horizontal accumulator bracket

G3·002·01

Rolls-Royce
Corniche

Bentley
Continental

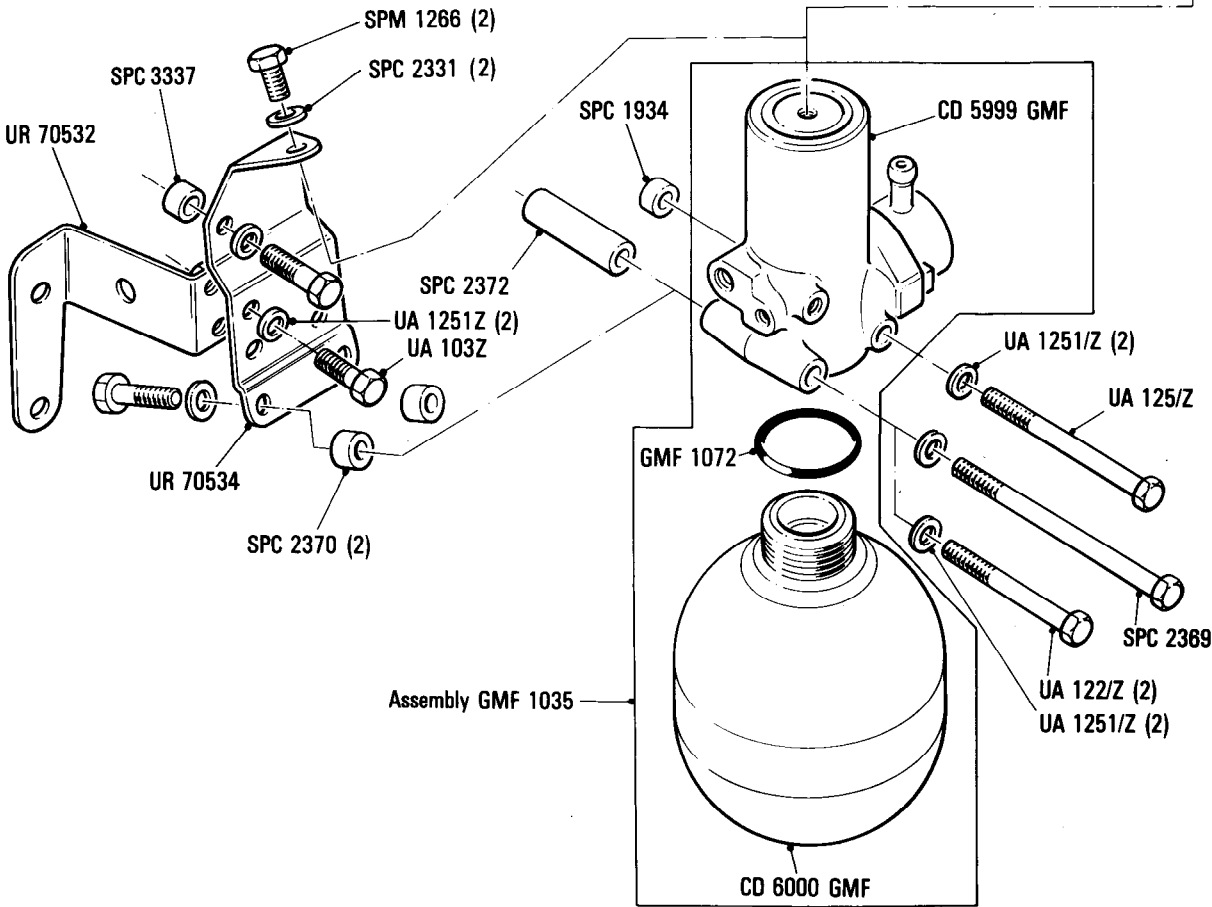
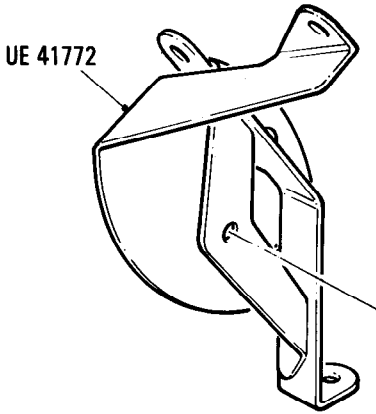
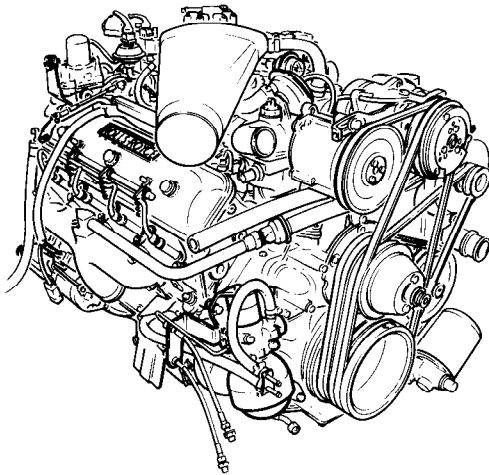
Car serial number

SCAZD0000HCX20010 20238 to 24637
except 23246 and 23247

Hydraulics and Braking System
Accumulator & Accumulator Valve Hydraulic Mineral Oil System

Parts marked thus * refer to Additional Information below

◁ Left-hand ▷ Right-hand



Additional Information

© Rolls-Royce Motor Cars Limited 1987

G3·003·01

Rolls-Royce
Corniche

Bentley
Continental

Car serial number

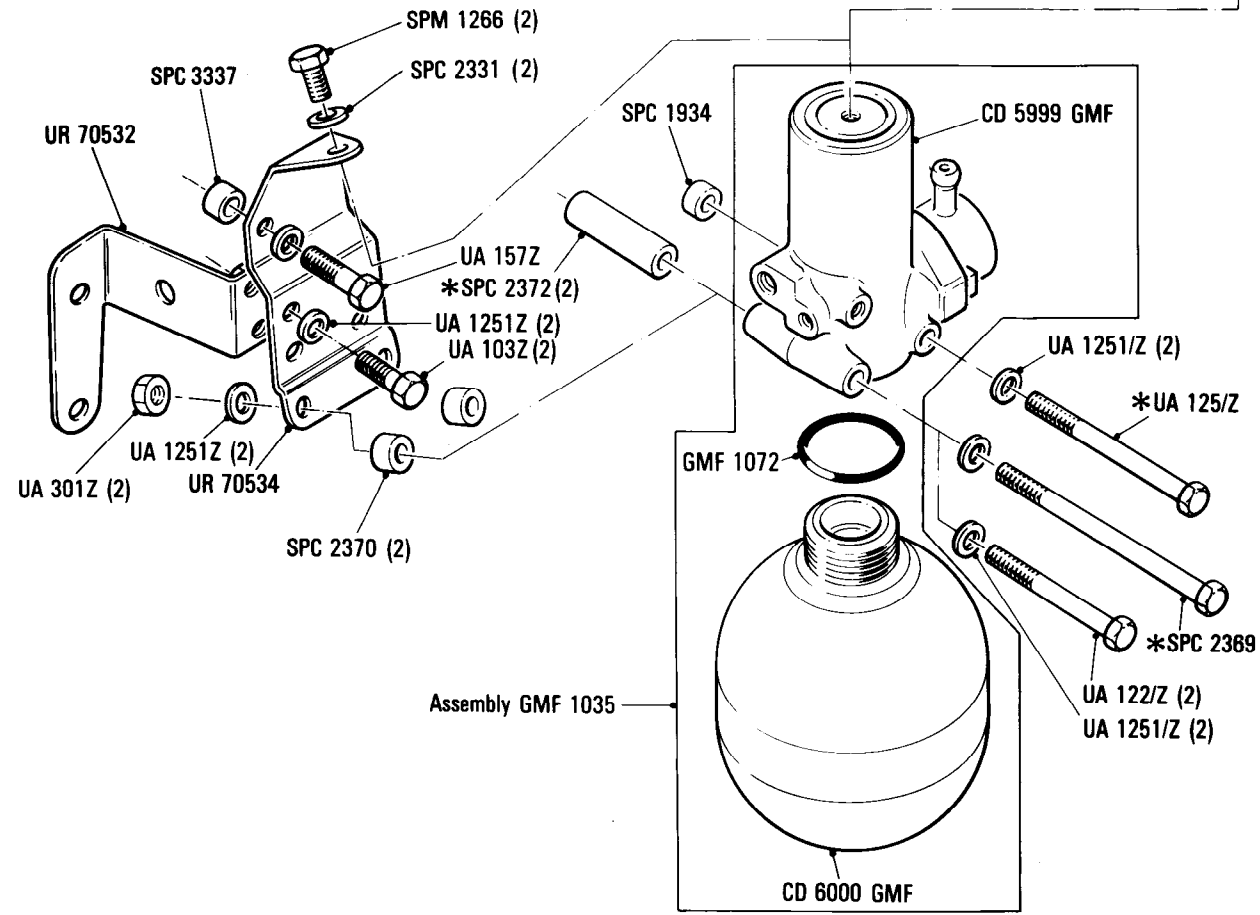
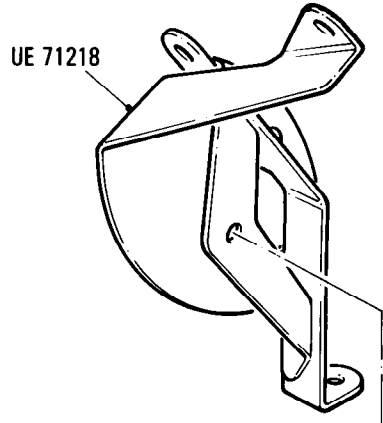
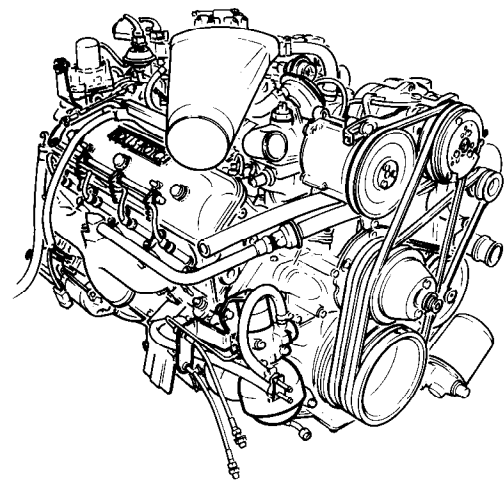
SCAZD00A7KCH23246, 23247,
24770 to 29290

Hydraulic & Braking System

Accumulator, Accumulator Valve & Bracket (Hydraulic Mineral Oil)

Parts marked thus * refer to Additional Information below

◁ Left-hand ▷ Right-hand



Additional Information

© Rolls-Royce Motor Cars Limited 1987

* UA 125Z
SPC 2369 } Rear Accumulator
SPC 2372 }

G4·001·00

Rolls-Royce
Corniche
Bentley
Continental

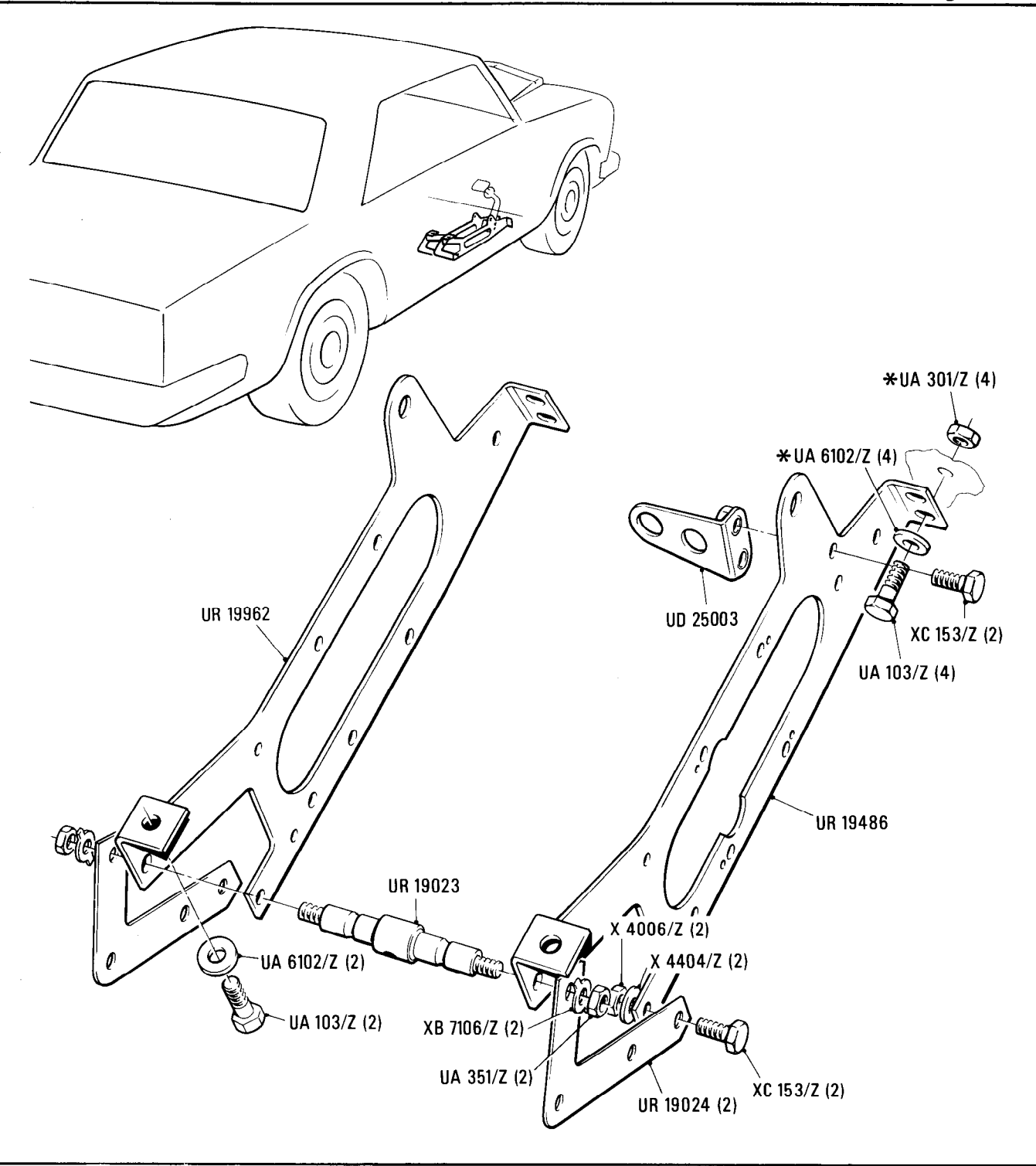
Car serial number

SCAZD0006DCH05037 to 13523

Hydraulic & Braking System
Distribution Valves and Foot Pedal Lever Mounting Bracket

Parts marked thus * refer to Additional Information below

◁ Left-hand ▷ Right-hand



Additional Information

© Rolls-Royce Motor Cars Limited 1987

* UA 6102Z (8)
UA 301Z (4) } Left-hand drive cars only

G4·002·00

Rolls-Royce
Corniche

Bentley
Continental

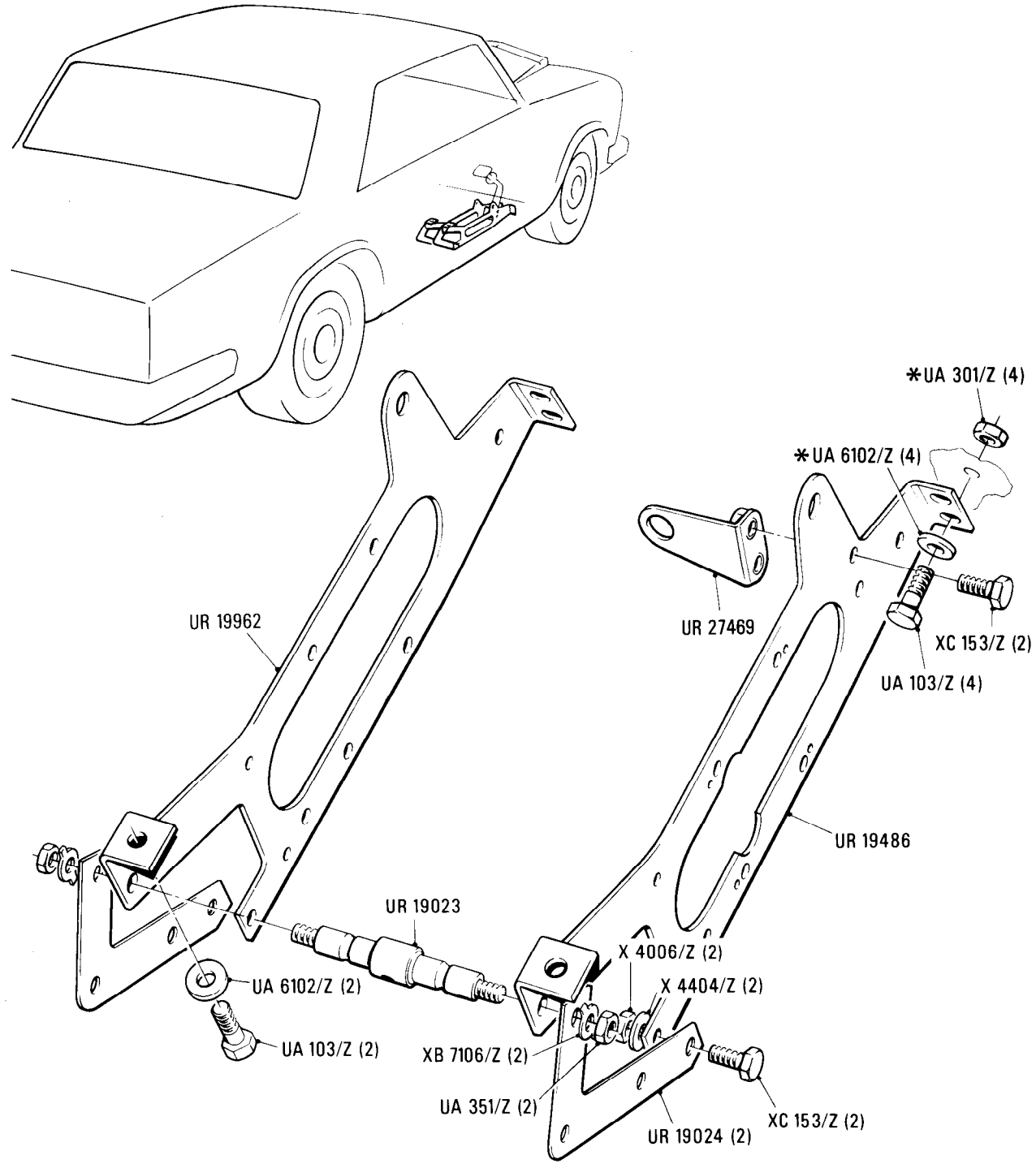
Hydraulic & Braking System
Distribution Valves & Foot Pedal Lever Mounting

Car serial number

SCAZD42A2GCX13524 onwards

Parts marked thus * refer to Additional Information below

◁ Left-hand ▷ Right-hand



Additional Information

© Rolls-Royce Motor Cars Limited 1987

* UA 6102Z (8)
UA 301Z (4)] Left-hand drive cars only

G7•001•02

Rolls-Royce
Corniche
Bentley
Continental

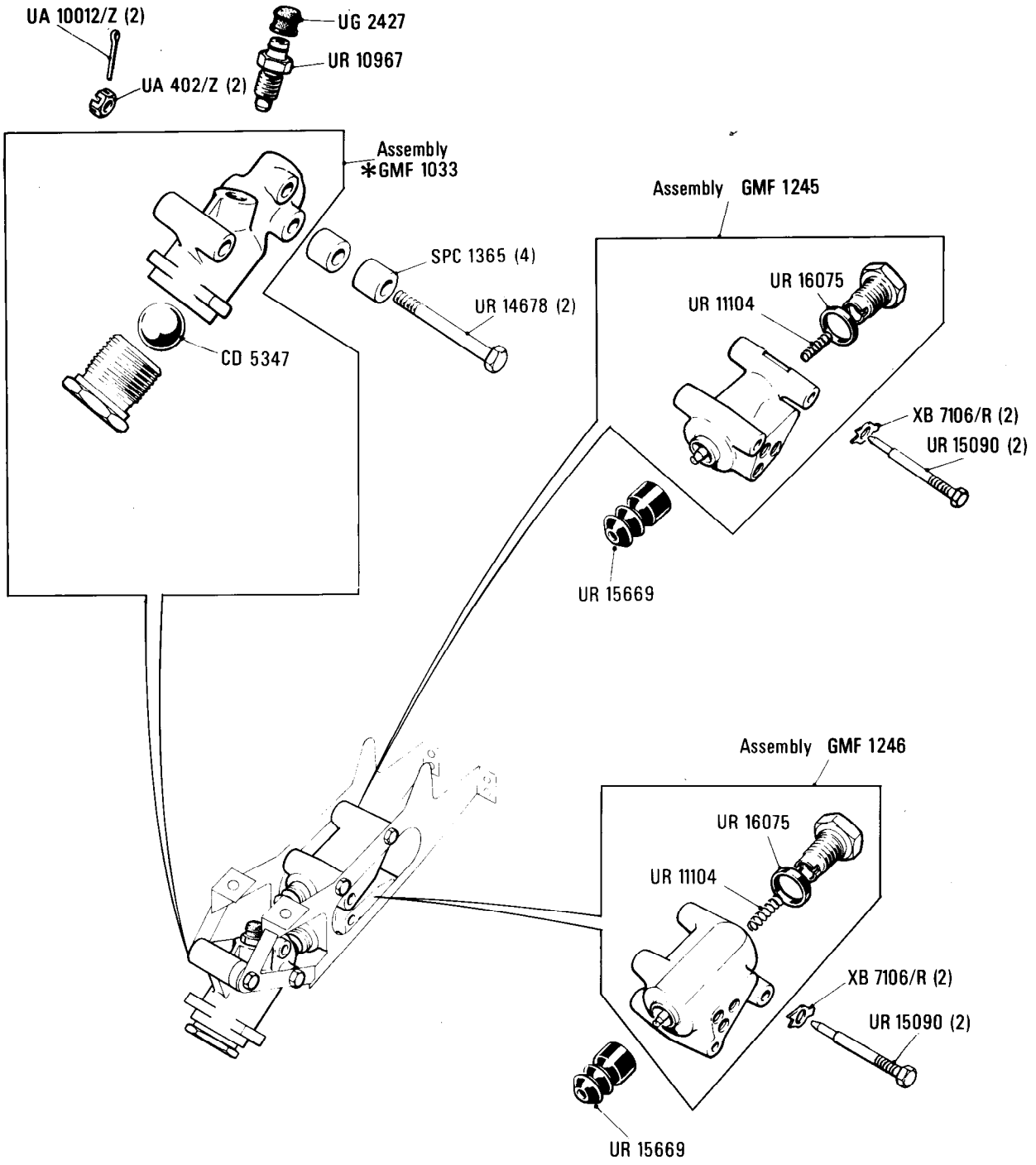
Hydraulics and Braking System
Distribution Valves and G Conscious Valve

Car serial number

SCAZD0000DCH05037 to 21668
Except 21600, 21601, 21602, 21604,
21664, 21665, 21666, 21667

Parts marked thus * refer to Additional Information below

◀ Left-hand ▶ Right-hand



Additional Information

*GMF 1033 Service kit. CD 6223 GMF

© Rolls-Royce Motor Cars Limited 1987

G7•002•02

Rolls-Royce
Corniche

Bentley
Continental

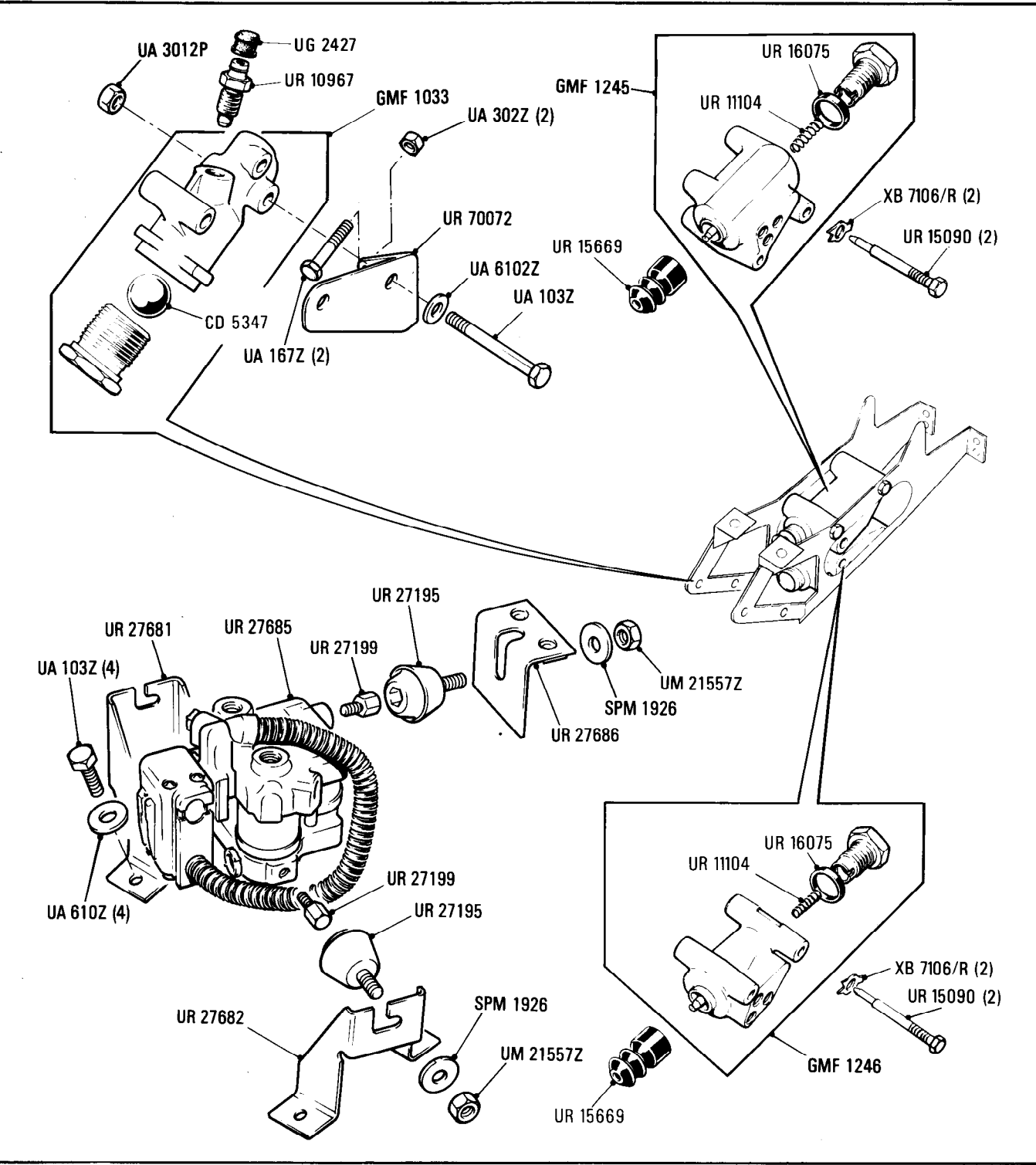
Hydraulic & Braking System
Distribution Valve, 'G' Conscious Valve & Brake Modulator

Car serial number

SCAZD02AXJCX21600, 21601, 21602,
21604, 21664, 21665, 21666, 21667,
21669 to 29290

Parts marked thus * refer to Additional Information below

◀ Left-hand ▶ Right-hand



Additional Information

© Rolls-Royce Motor Cars Limited 1987

* GMF 1033 Service kit CD 6223 GMF

G8•001•00

Rolls-Royce
Corniche
Bentley
Continental

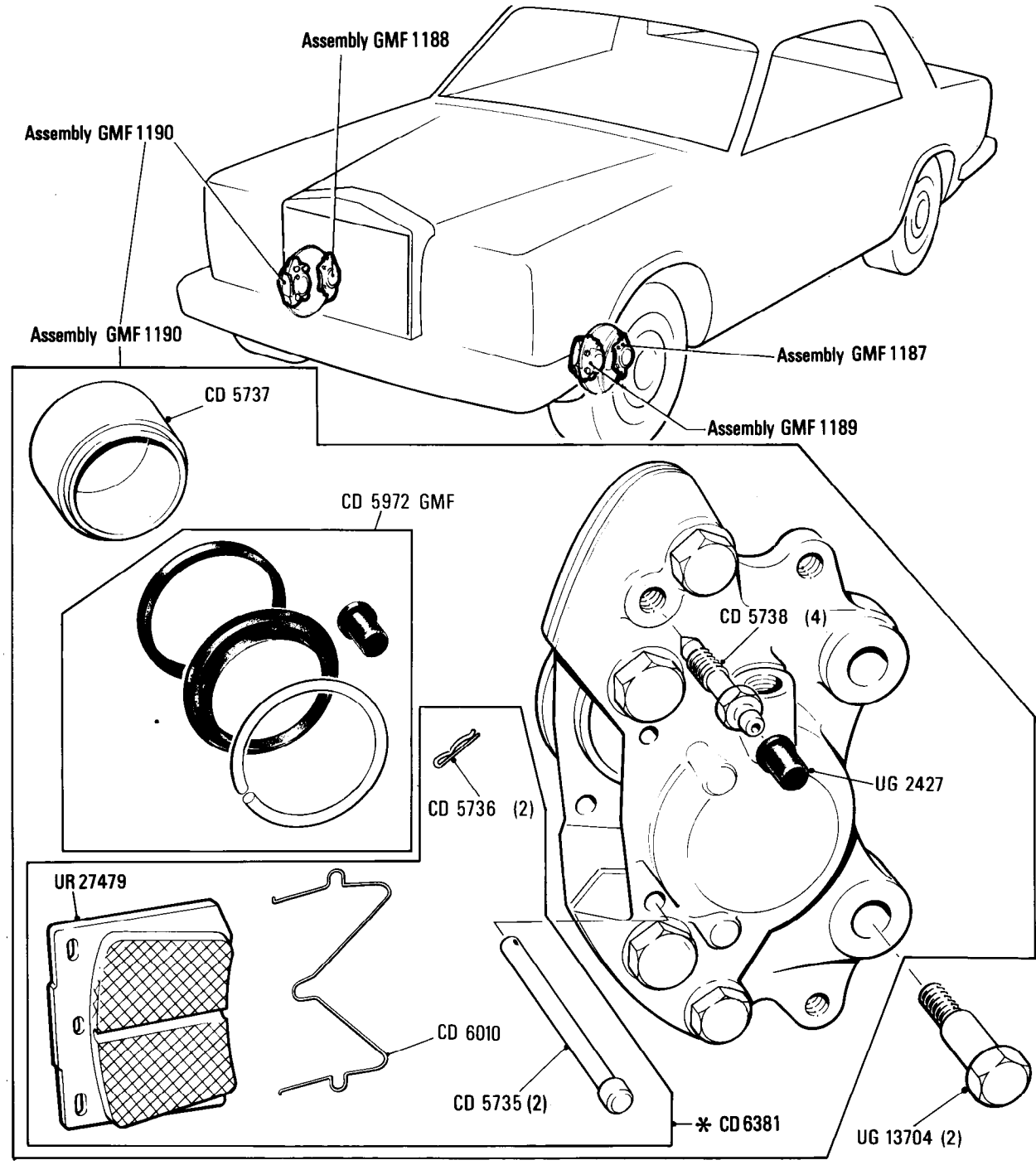
Hydraulic and Braking System
Calipers Front Brakes

Car serial number

SCAZD0006CCH05037 to 16968

Parts marked thus * refer to Additional Information below

◀ Left-hand ▶ Right-hand



Additional Information

* CD 6381 Axle set 8 pads

G8·002·01

Rolls-Royce
Corniche
Bentley
Continental

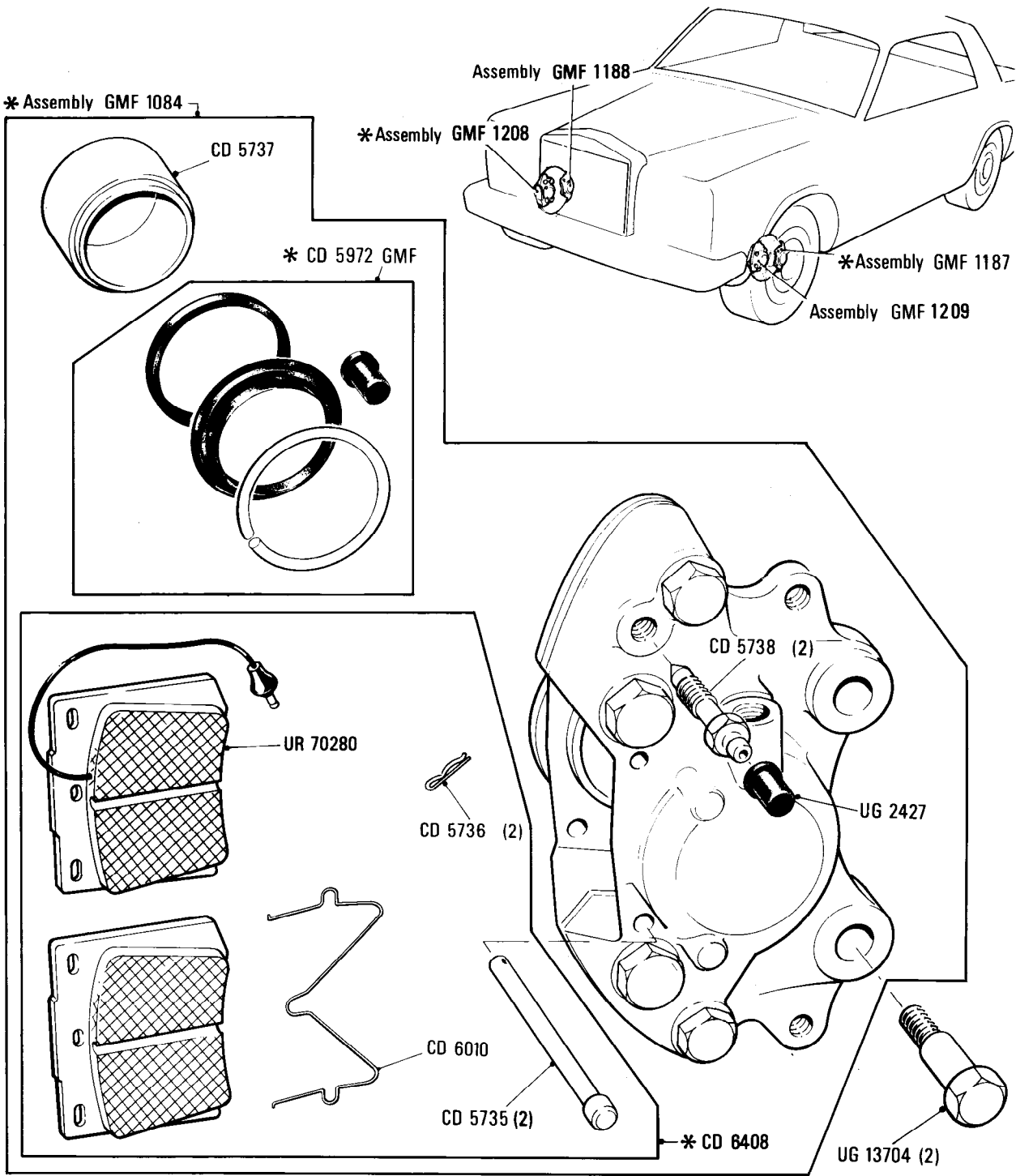
Hydraulics and Braking System
Calipers Front Brakes

Car serial number

SCAZD0000HCX20010 to 29290

Parts marked thus * refer to Additional Information below

◁ Left-hand ▷ Right-hand



Additional Information

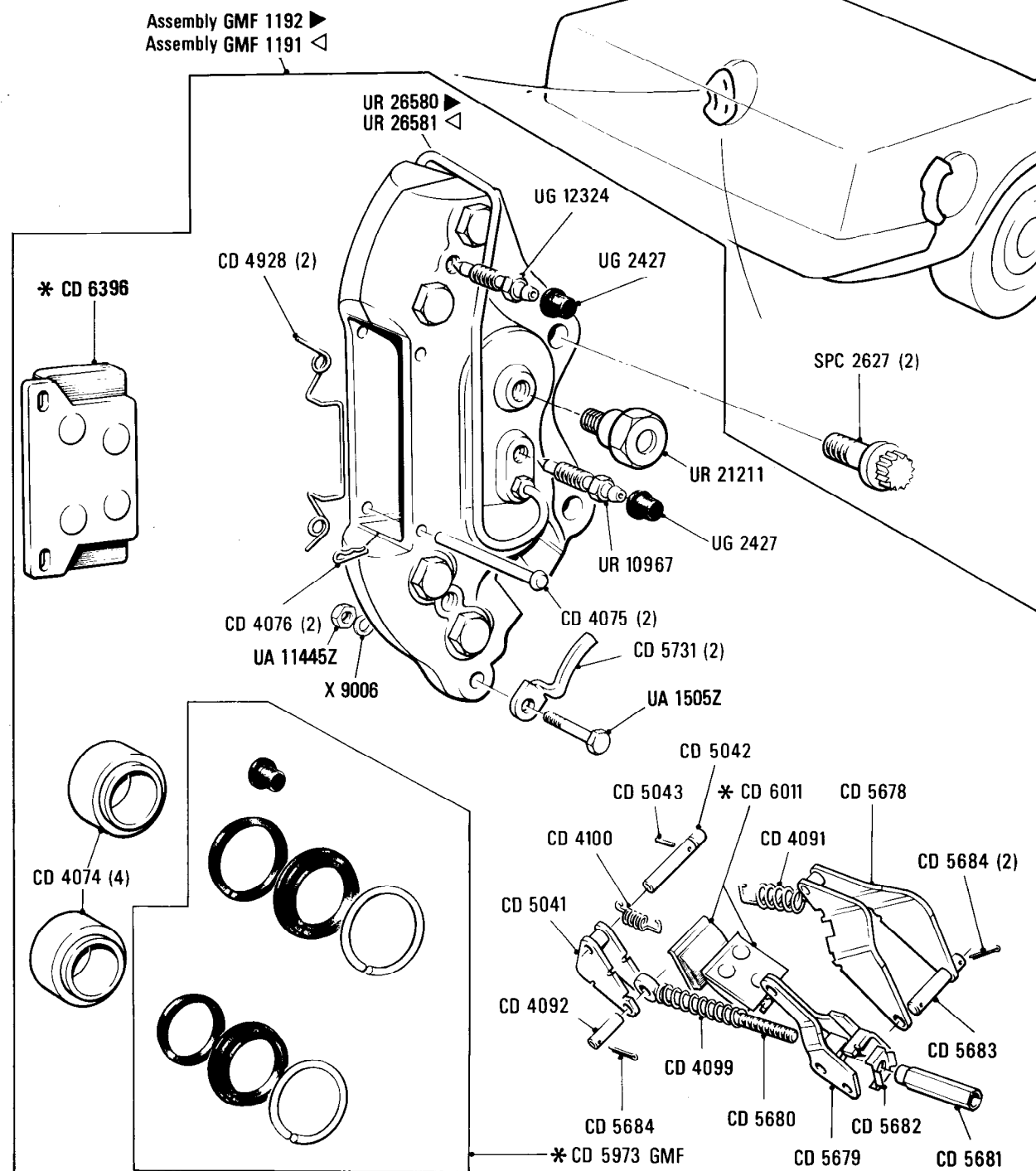
* CD 6408 Axle set comprising
UR 27479 6 pads
UR 70280 2 pads

Car serial number

SCAZD00006CCH05037 to 29290

Parts marked thus * refer to Additional Information below

◁ Left-hand ▷ Right-hand



Additional Information

- * CD 6396 Pad kit 4 pads per kit
- * CD 6011 Pad kit hand brake 4 pads per kit
- * CD 5973 GMF Seal kit parts included to service both rear calipers

© Rolls-Royce Motor Cars Limited 1987

G10
•001•00

Rolls-Royce
Corniche
Bentley
Continental

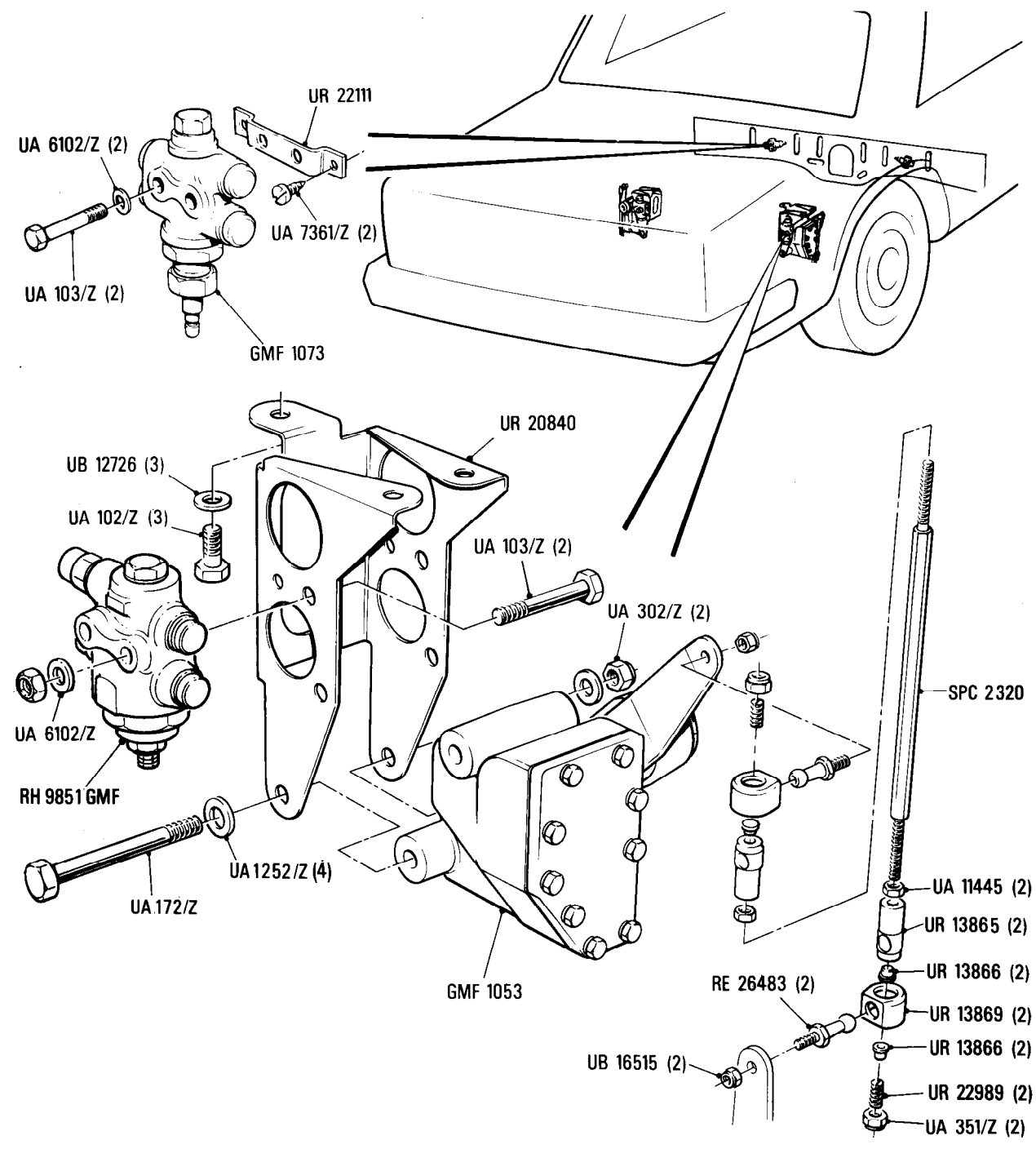
Hydraulics and Braking System
Height Control Valves

Car serial number

SCAZD0008CCH05037 to 07941
except 07815

Parts marked thus * refer to Additional Information below

◀Left-hand ▶Right-hand



Additional Information

© Rolls-Royce Motor Cars Limited 1987

G10
•002•00

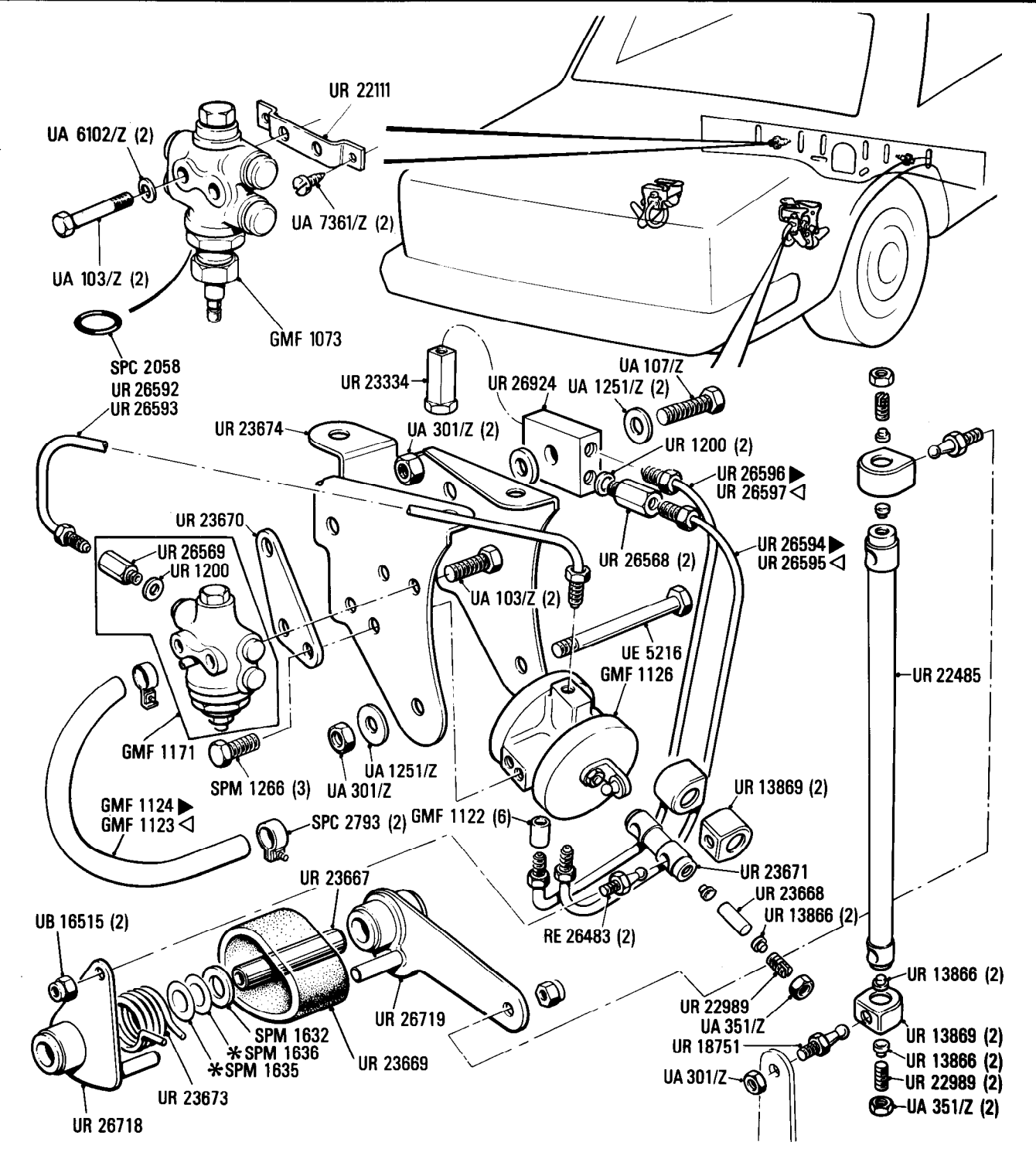
Rolls-Royce
Corniche
Bentley
Continental

Hydraulics and Braking System
Height Control Levelling Valves

Car serial number
SCAZD0001ECH07815, 07942 to 10170

Parts marked thus * refer to Additional Information below

◁ Left-hand ▷ Right-hand



Additional Information
* SPM 1635 .004 in thick } as required
SPM 1636 .010 in thick }

G10
•003•00

Rolls-Royce
Corniche
Bentley
Continental

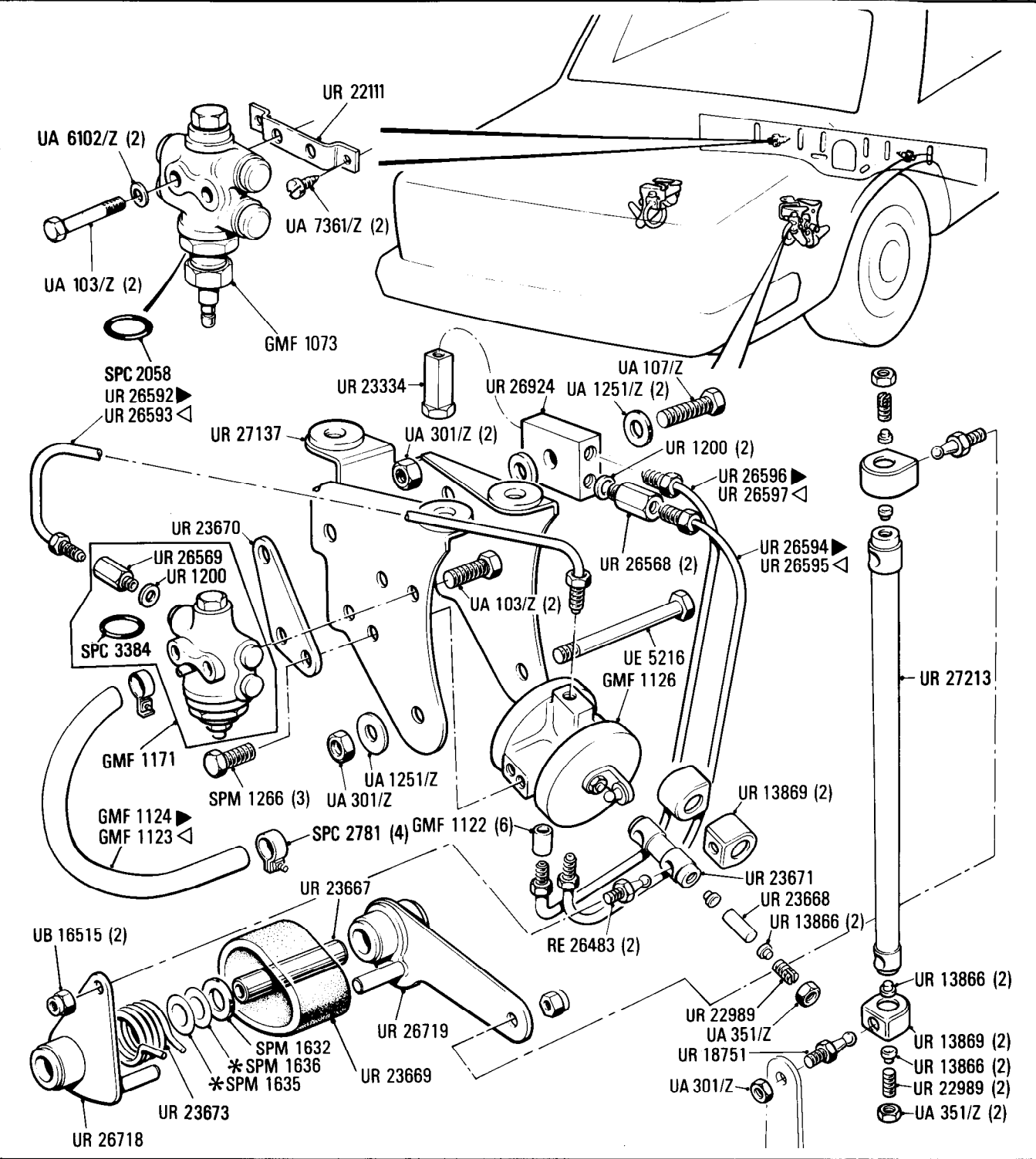
Car serial number

SCAZD42A4FCX10171 to 10313

Hydraulic and Braking System
Height Control Levelling Valves

Parts marked thus * refer to Additional Information below

◀ Left-hand ▶ Right-hand



Additional Information

* SPM 1635 .004 in thick
SPM 1636 .010 in thick

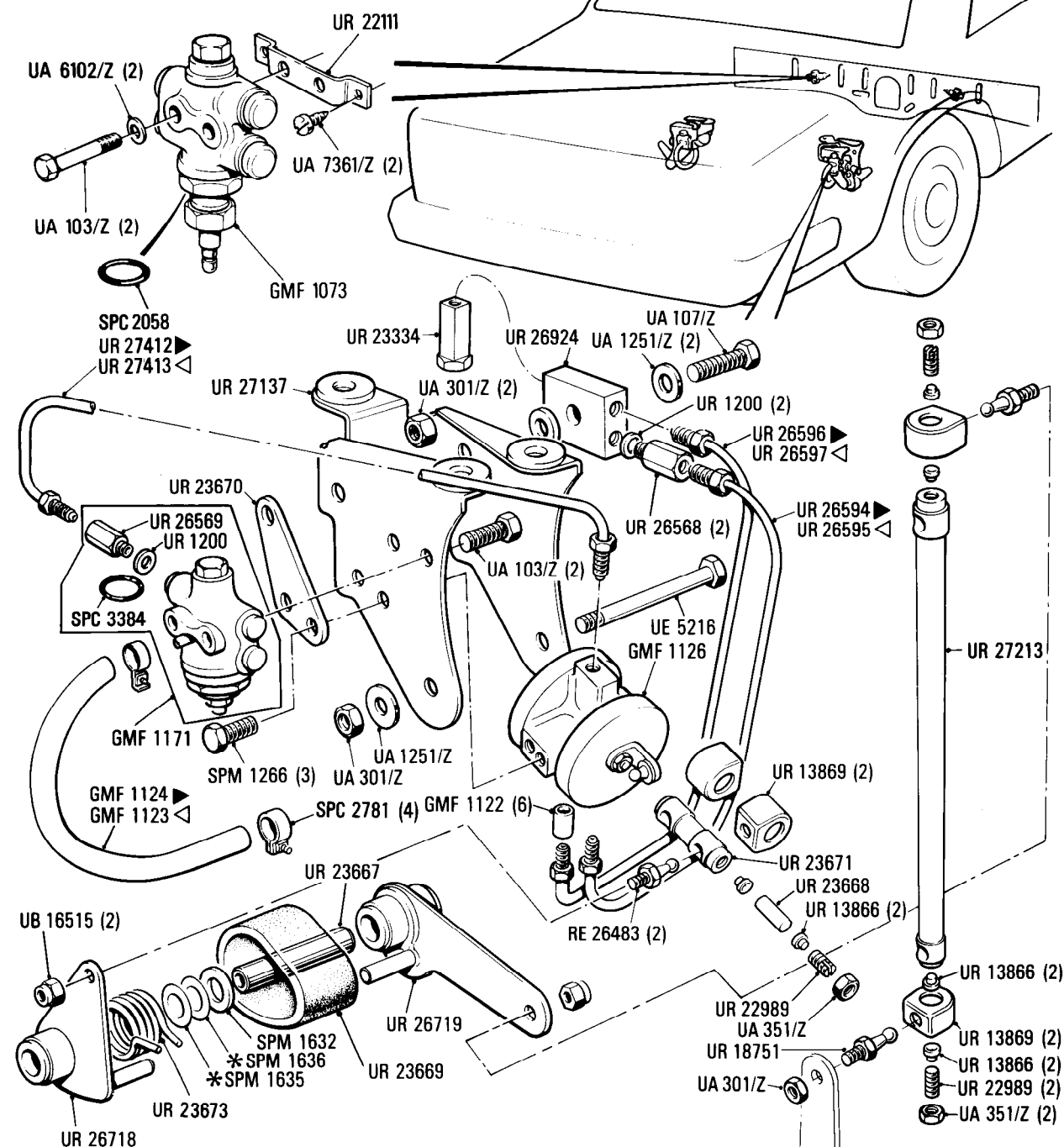
© Rolls-Royce Motor Cars Limited 1987

Car serial number

SCAZD42A0FCX10314 to 13161

Parts marked thus * refer to Additional Information below

◁ Left-hand ▷ Right-hand



Additional Information

* SPM 1635 .004 in thick } as required
SPM 1636 .010 in thick }

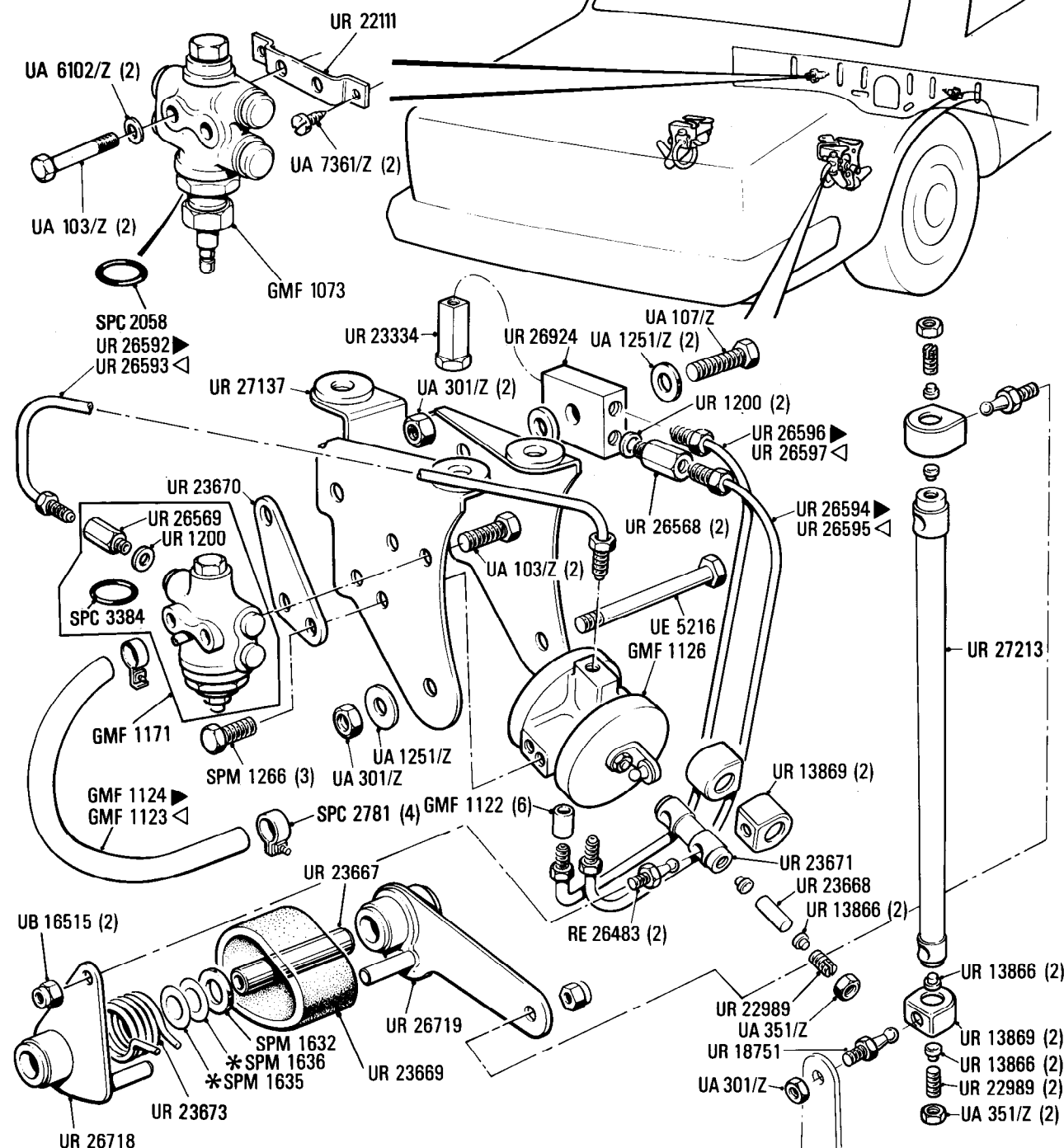
© Rolls-Royce Motor Cars Limited 1987

Car serial number

SCAZD42A5GCX13162 to 16968

Parts marked thus * refer to Additional Information below

◁ Left-hand ▷ Right-hand



Additional Information

* SPM 1630 .004 in thick	as required
SPM 1636 .010 in thick	

© Rolls-Royce Motor Cars Limited 1987

G10
•006•02

Rolls-Royce
Corniche

Bentley
Continental

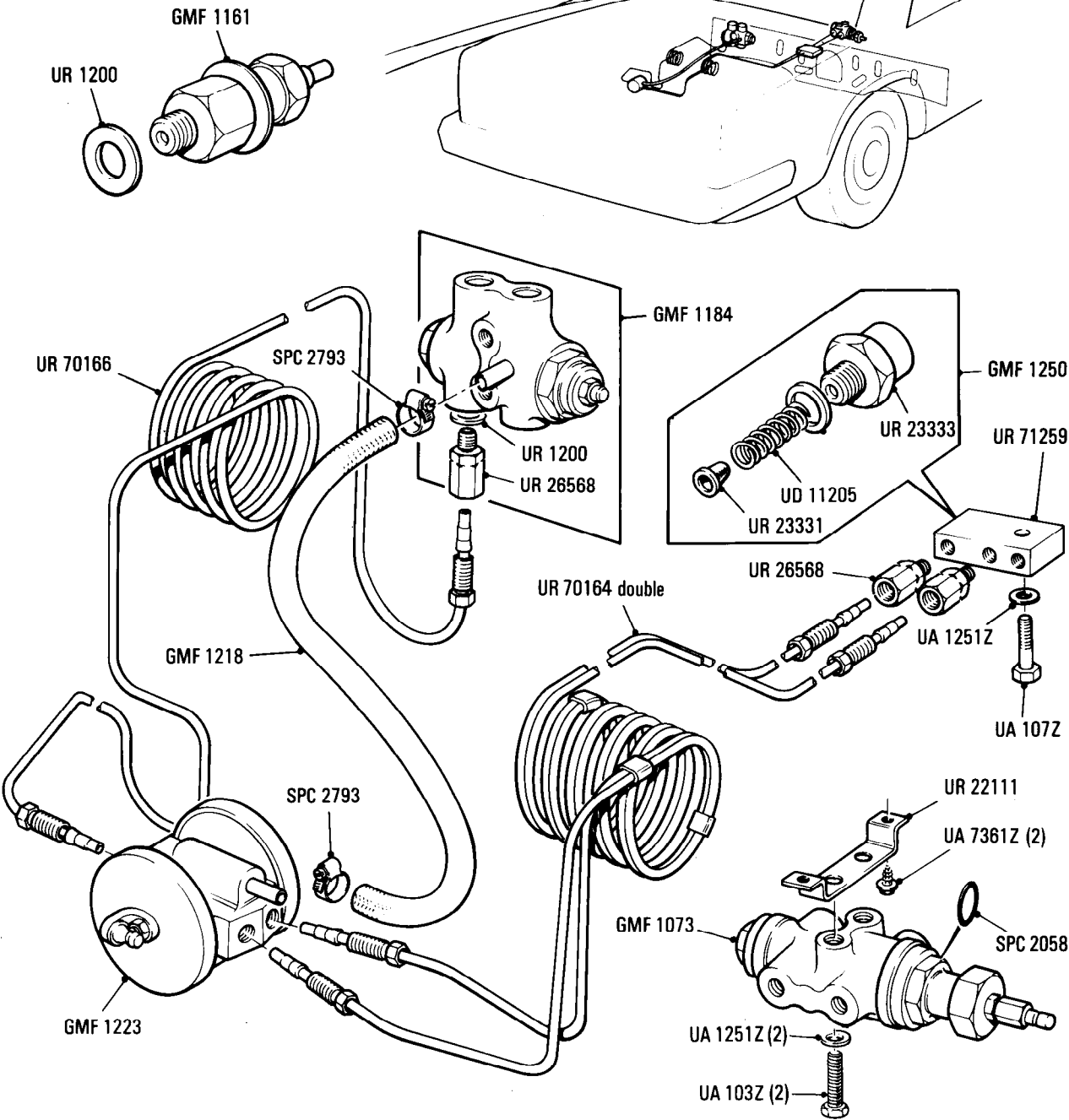
Car serial number

SCAZD0000HCX20010 to 29290

Hydraulic and Braking System
Height Control Levelling Valve

Parts marked thus * refer to Additional Information below

◀ Left-hand ▶ Right-hand



Additional Information

- * UR 70164 Standard wheelbase cars
- UR 70168 Long wheelbase cars
- * SPM 1635 .004 in thick } as required
- SPM 1636 .010 in thick }

© Rolls-Royce Motor Cars Limited 1990

G15
•001•00

Rolls-Royce
Corniche
Bentley
Continental

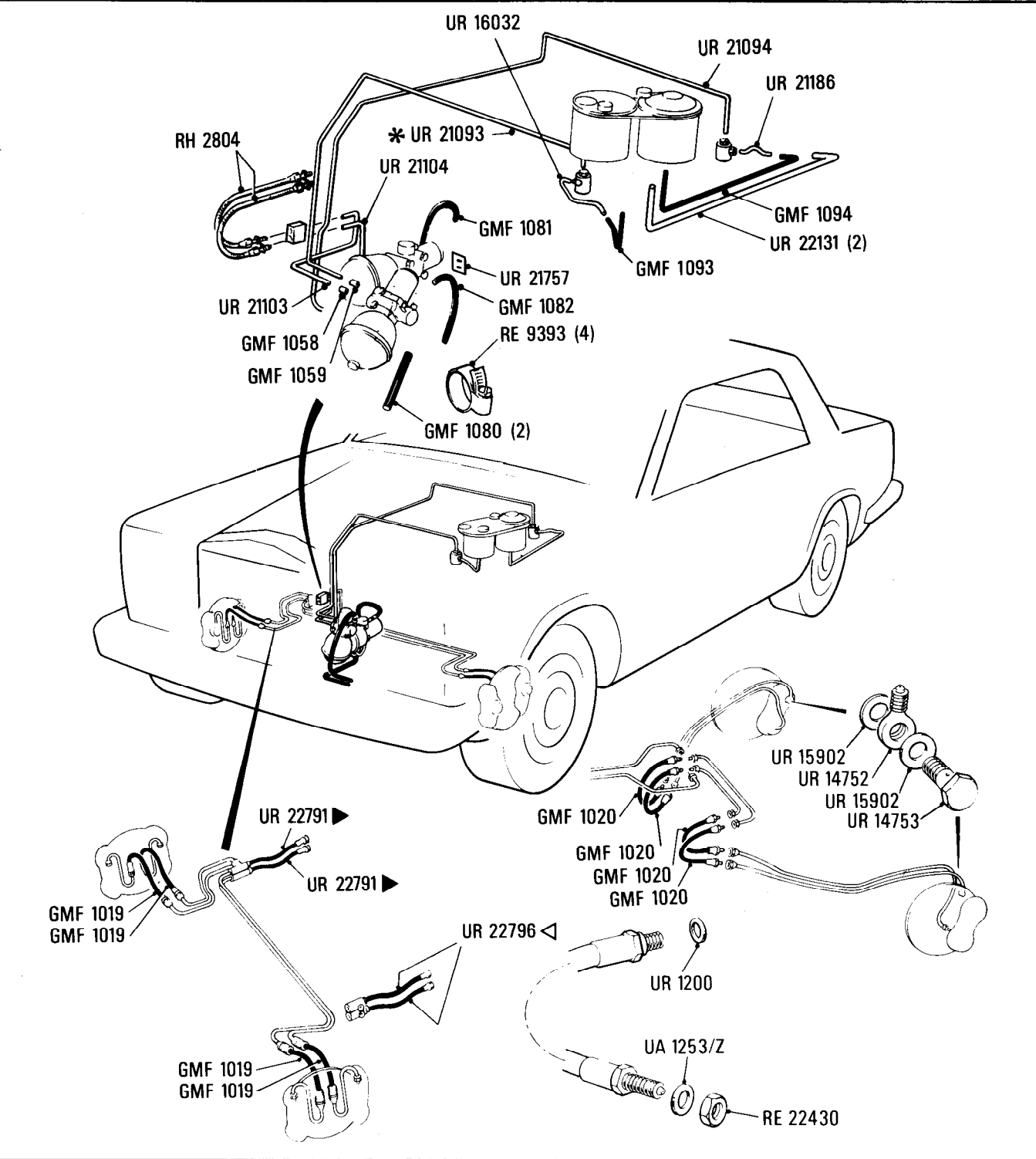
Car serial number

SCAZD0008CCH05037 to 07813
except 07781, 07783

Hydraulic and Braking System
Flexible Hoses and Pipes

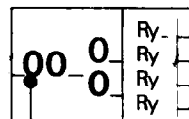
Parts marked thus * refer to Additional Information below

◁ Left-hand ▶ Right-hand



Additional Information

© Rolls-Royce Motor Cars Limited 1987



Univers 55
8d/9pt.

Univers 65
14pt.
Letrasheet sheets
403 and 3591

Copy
Univers 65
8d/9pt.

G15
·002·00

Rolls-Royce
Corniche

Bentley
Continental

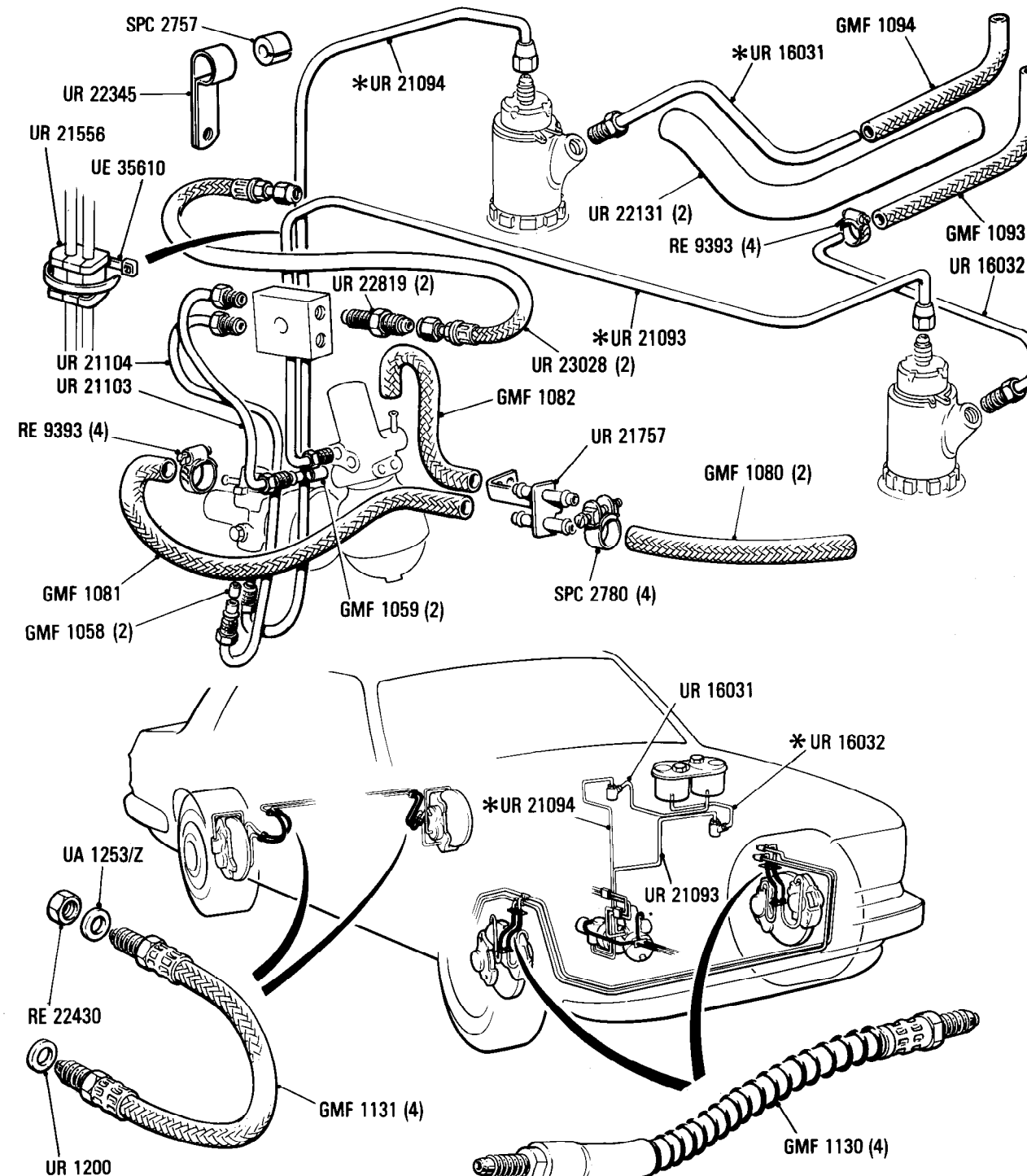
Car serial number

**SCAZD42A7ECX07781, 07783, 07814 to
13409 except 13403, 13408**

Hydraulics and Braking System Flexible Hoses and Pipes

Parts marked thus * refer to Additional Information below

◀ Left-hand ▶ Right-hand



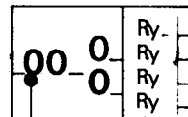
Additional Information

- * UR 16031 Cars for countries other than
N. America, Japan and Australia
- UR 22218 Cars for N. America and Japan
- UR 21186 Cars for Australia
- * UR 20193 Cars for countries other than
N. America and Japan
- * UR 22810 Cars for N. America and Japan
- * UR 21094 Cars for countries other than
N. America and Japan
- UR 22811 Cars for N. America and Japan

© Rolls-Royce Motor Cars Limited 1987

Ry
Ry
Ry

Univers 65 and 55
12pt set solid



Univers 55
8d/9pt.

Univers 65
14pt.
Letrasheet sheets
403 and 3591

Copy
Univers 65
8d/9pt.

G15
·003·00

Rolls-Royce
Corniche

Bentley
Continental

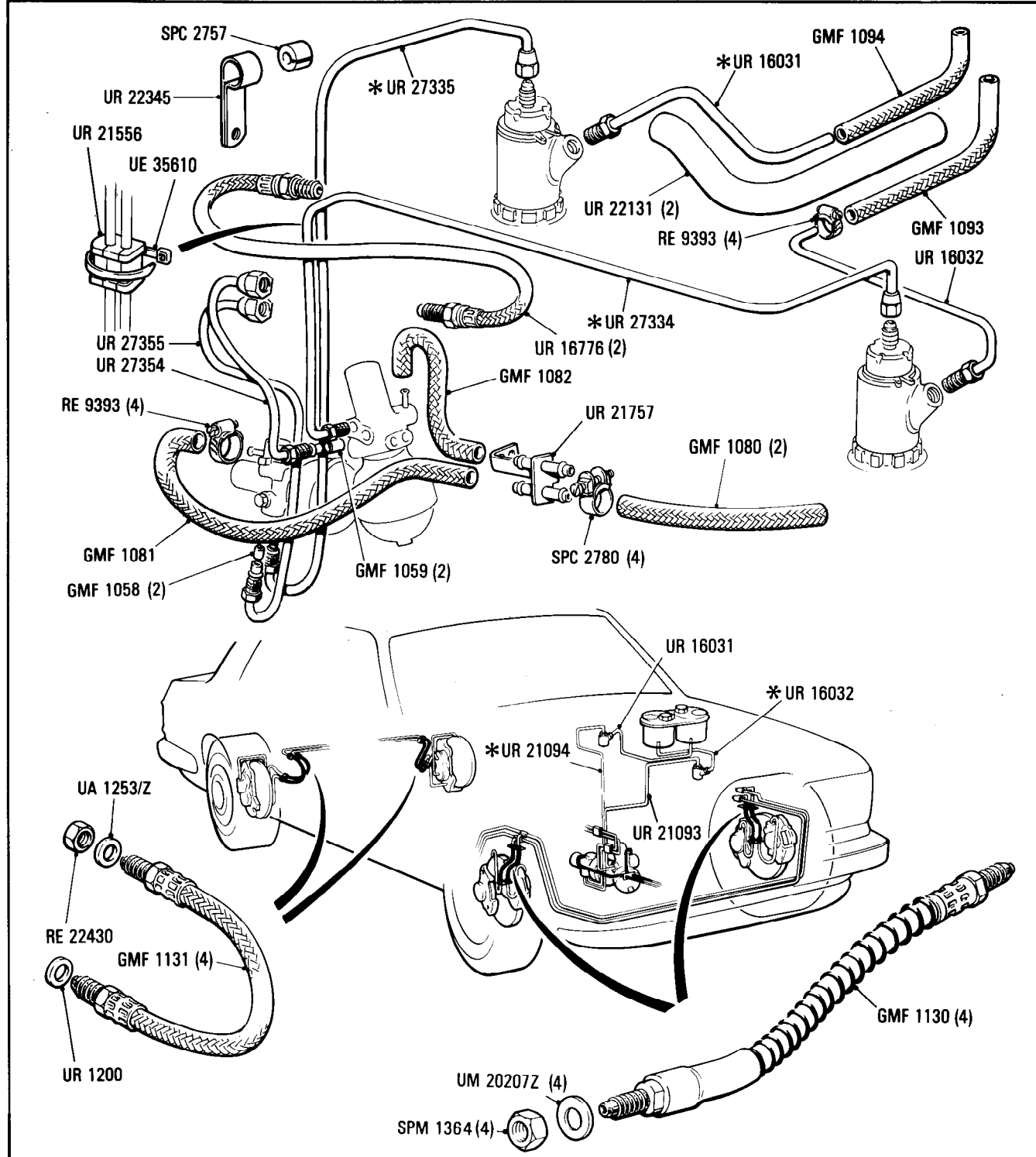
Car serial number

SCAZD42A1GCX13402, 13408,
13410 to 13161

Hydraulics and Braking System Flexible Hoses and Pipes

Parts marked thus * refer to Additional Information below

◁ Left-hand ▷ Right-hand



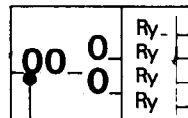
Additional Information

* UR 27334 Cars for countries other than
N. America and Japan

Ry
Ry
Ry

Univers 65 and 55
12pt set solid

© Rolls-Royce Motor Cars Limited 1987



Univers 55
8d/9pt.

Univers 65
14pt.
Letrasheet sheets
403 and 3591

Copy
Univers 65
8d/9pt.

G15
·004·00

Rolls-Royce
Corniche

Bentley
Continental

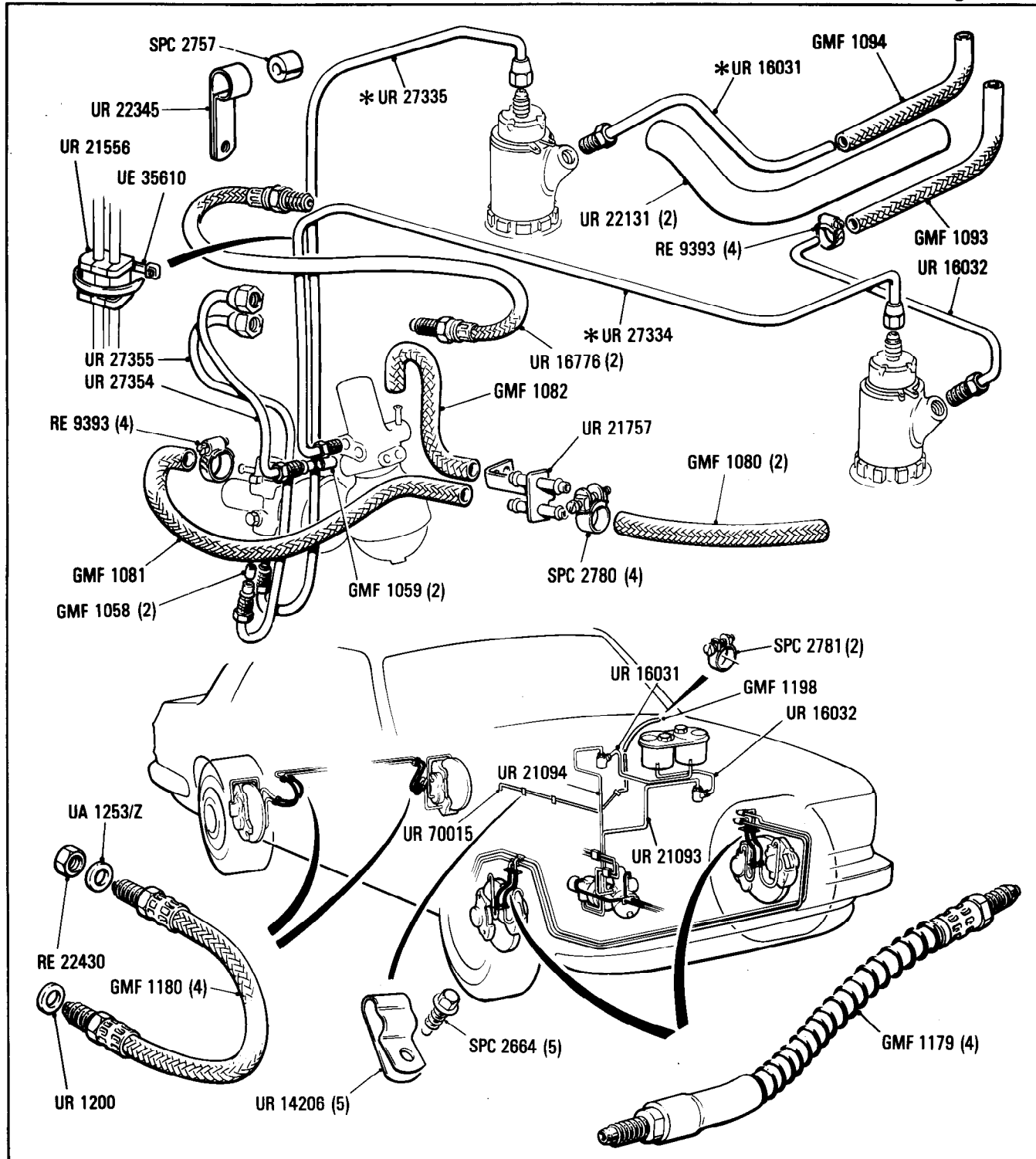
Car serial number

SCAZD42A5GCX13162 to 16968

Hydraulic and Braking System Flexible Hoses and Pipes

Parts marked thus * refer to Additional Information below

◁ Left-hand ▷ Right-hand



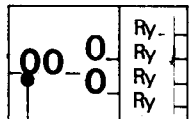
Additional Information

- * UR 27334 Cars for countries other than N. America & Japan
- UR 22812 Cars for N. America & Japan
- * UR 27335 Cars for countries other than N. America & Japan
- UR 22813 Cars for N. America & Japan

© Rolls-Royce Motor Cars Limited 1987

Ry
Ry
Ry

Univers 65 and 55
12pt set solid



Univers 55
8d/9pt.

Univers 65
14pt.
Letraset sheets
403 and 3591

Copy
Univers 65
8d/9pt.

G15
005-01

Rolls-Royce
Corniche

Bentley
Continental

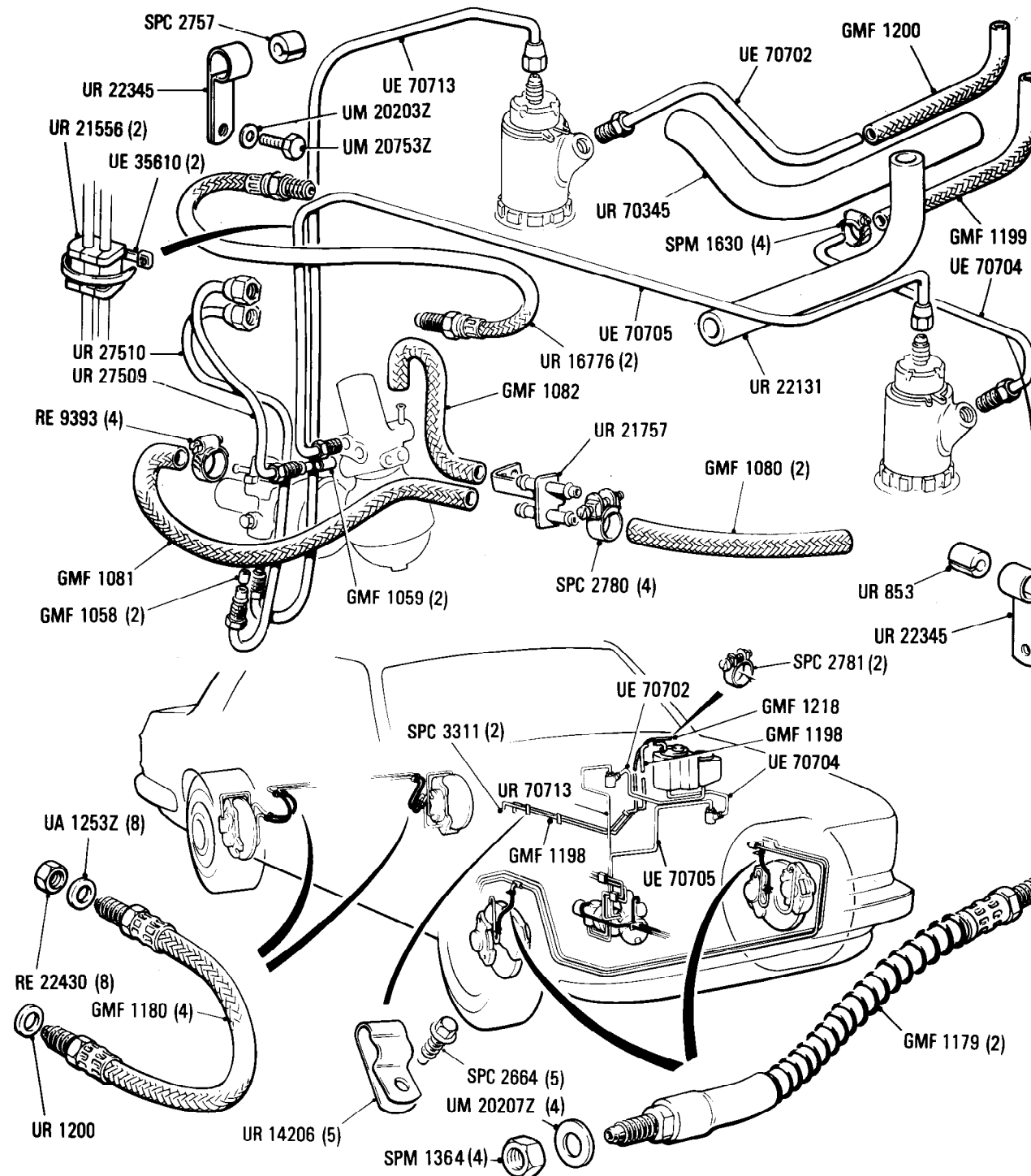
Car serial number

SCAZD0000HCX20010 to 29290

Hydraulic Braking System Flexible Hoses & Pipes

Parts marked thus * refer to Additional Information below

◀ Left-hand ▶ Right-hand



Ry
Ry
Ry

Univers 65 and 55
12pt set solid

Additional Information

© Rolls-Royce Motor Cars Limited 1990

G16
•001•05

Rolls-Royce
Corniche
Bentley
Continental

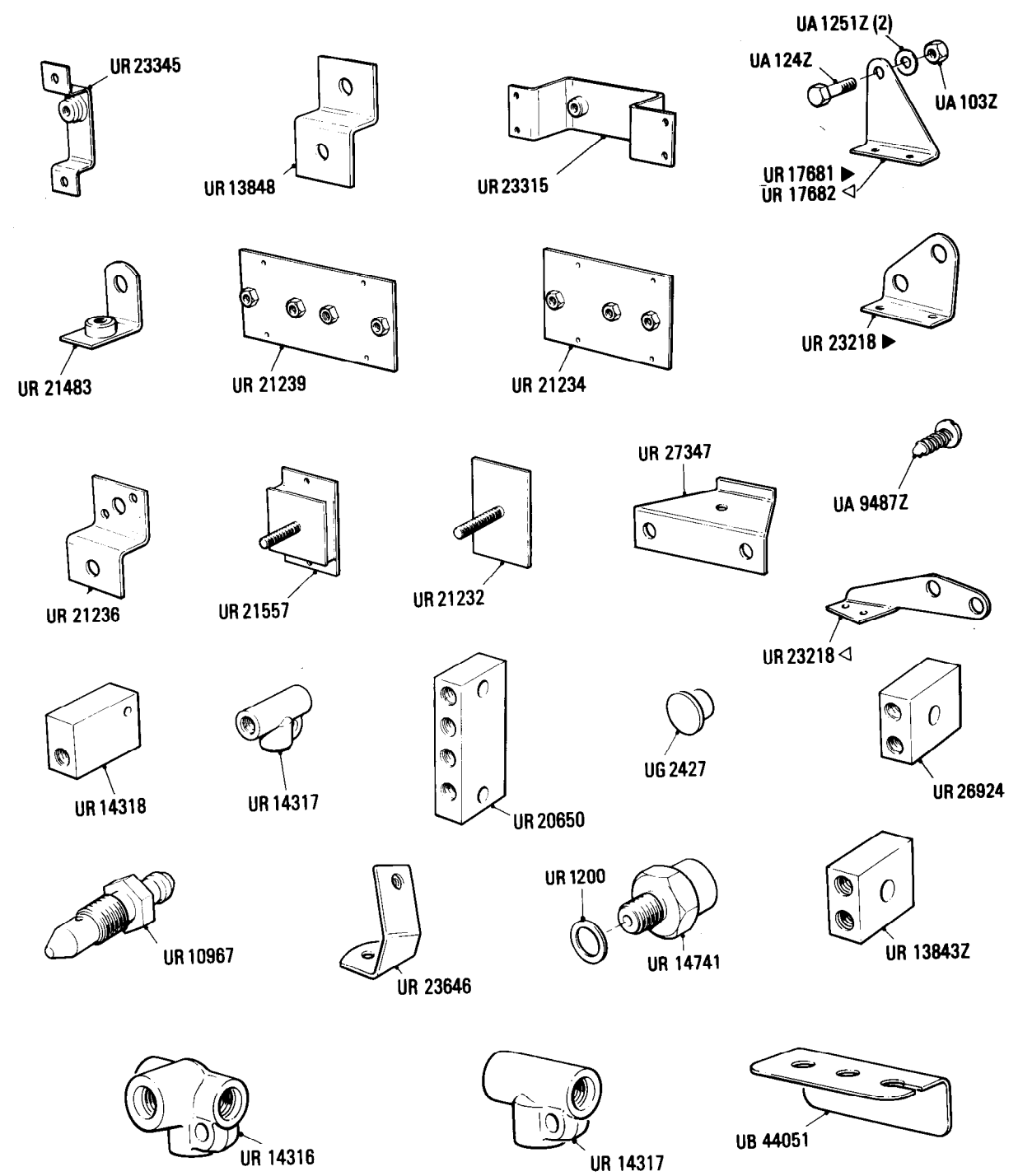
Hydraulic and Braking System
Mounting Brackets and Connections

Car serial number

SCAZD0006CCH05037 to 29290

Parts marked thus * refer to Additional Information below

◁ Left-hand ▷ Right-hand



Additional Information

© Rolls-Royce Motor Cars Limited 1987

G17
•001•01

Rolls-Royce
Corniche
Bentley
Continental

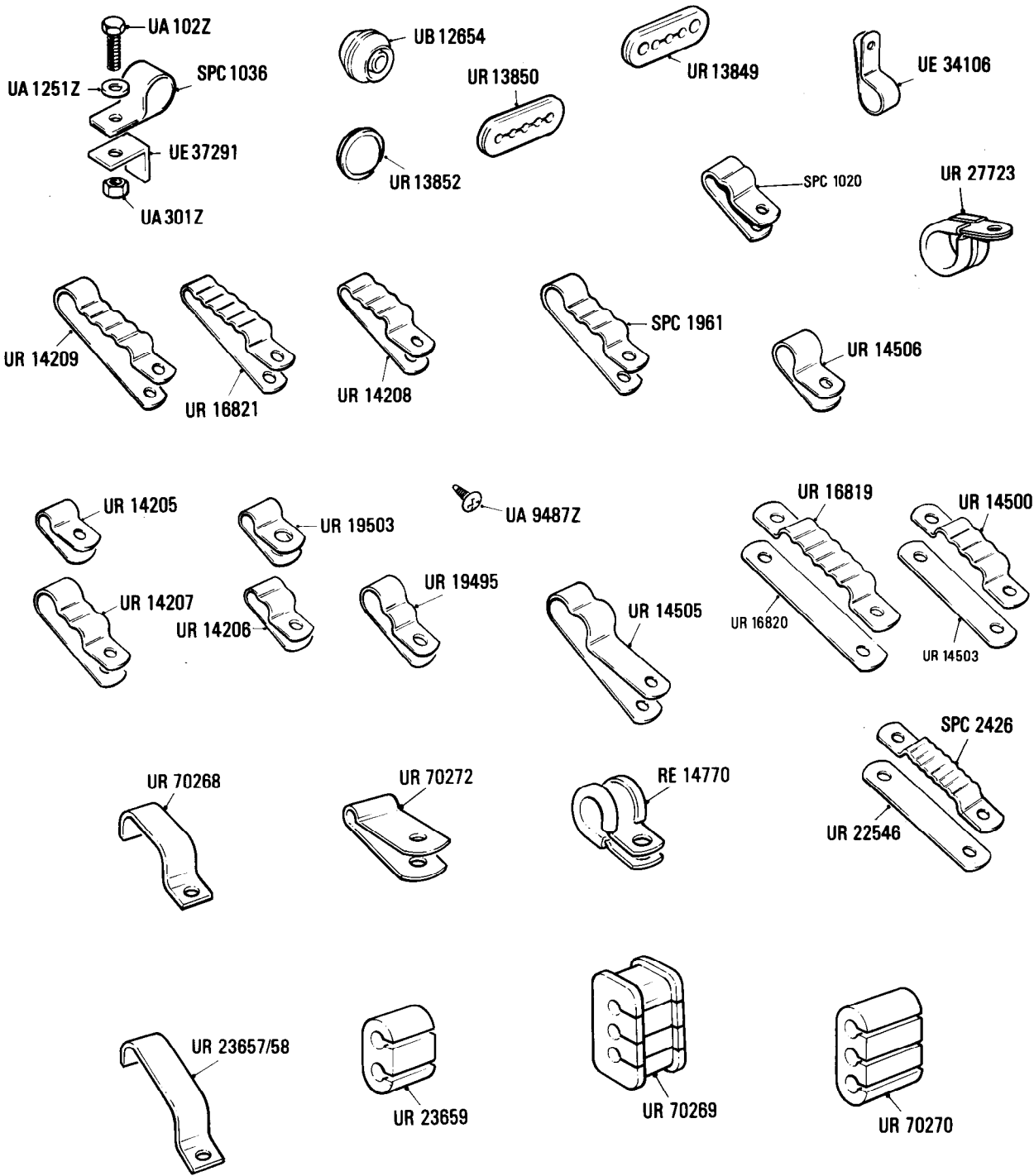
Hydraulic and Braking System
Clips and Grommets

Car serial number

SCAZD0006CCH05037 to 29220

Parts marked thus * refer to Additional Information below

◀ Left-hand ▶ Right-hand



Additional Information

© Rolls-Royce Motor Cars Limited 1987