

TWO-DOOR MOTOR CARS 1980-1989

Sub-frame and Suspension Menu

H1	Front sub-frame and suspension
H2	Front suspension upper and lower levers
H3	Front suspension springs and dampers
H4	Front suspension axle yoke ball joints and stabiliser
H5	Not used
H6	Front suspension hub and bearings
H7	Rear suspension crossmember and mountings
H8	Trailing arm
H9	Not used
H10	Rear discs
H11	Rear suspension hub and bearings
H12	Rear suspension stabilizer

H1-001-00

Rolls-Royce
Corniche

Bentley
Continental

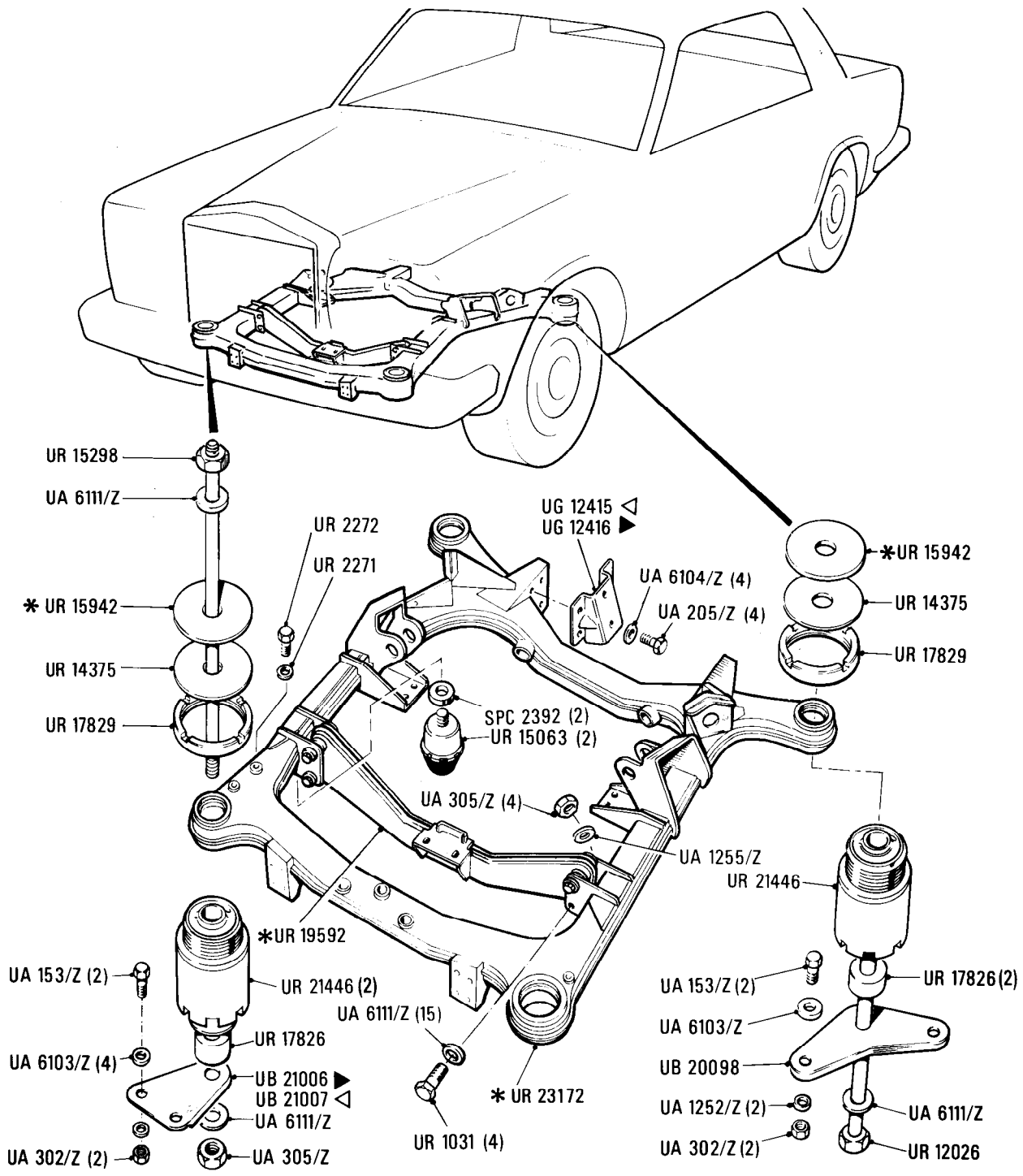
Sub-frame and Suspension
Front Sub-frame and Mountings

Car serial number

SCAZD0006CCH05037 onwards

Parts marked thus * refer to Additional Information below

◀Left-hand ▶Right-hand



Additional Information

© Rolls-Royce Motors Limited 1987

- * UR 19592 Crossmember only
- * UR 15942 Packing Washer 20 SWG
- UR 15943 Packing Washer 16 SWG
- UR 15944 Packing Washer 10 SWG

H2·001·00

Rolls-Royce
Corniche

Bentley
Continental

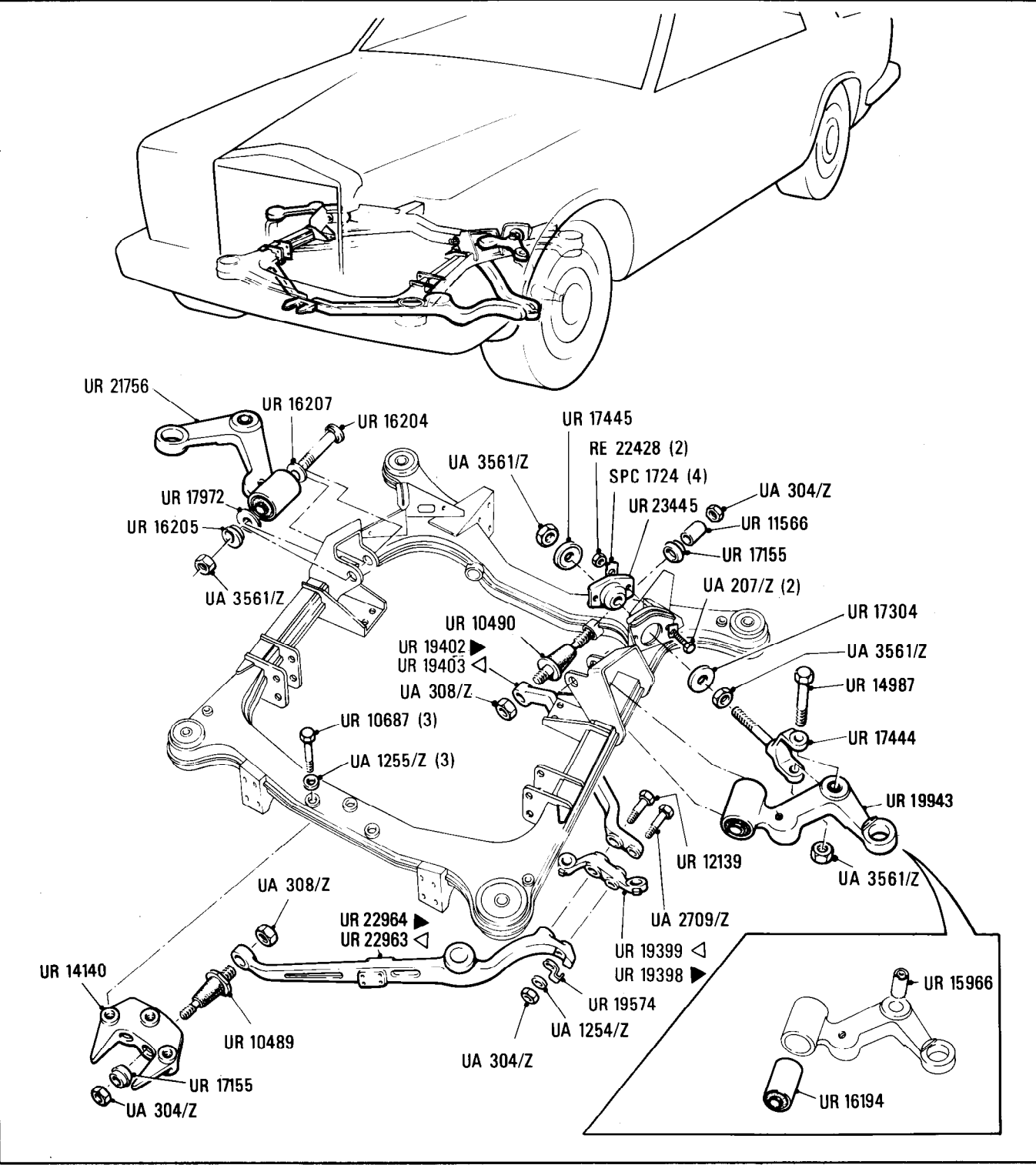
Sub-frame & Suspension
Front Suspension Upper & Lower Levers

Car serial number

SCAZD0006CCH05037 onwards

Parts marked thus * refer to Additional Information below

◀ Left-hand ▶ Right-hand



Additional Information

© Rolls-Royce Motors Limited 1984

- * UR 19574 Lock stop packing 0.036 in. thick RH
- UR 19575 Lock stop packing 0.036 in. thick LH
- UR 19576 Lock stop packing 0.064 in. thick RH
- UR 19577 Lock stop packing 0.064 in. thick LH

H3·001·00

Rolls-Royce
Corniche

Bentley
Continental

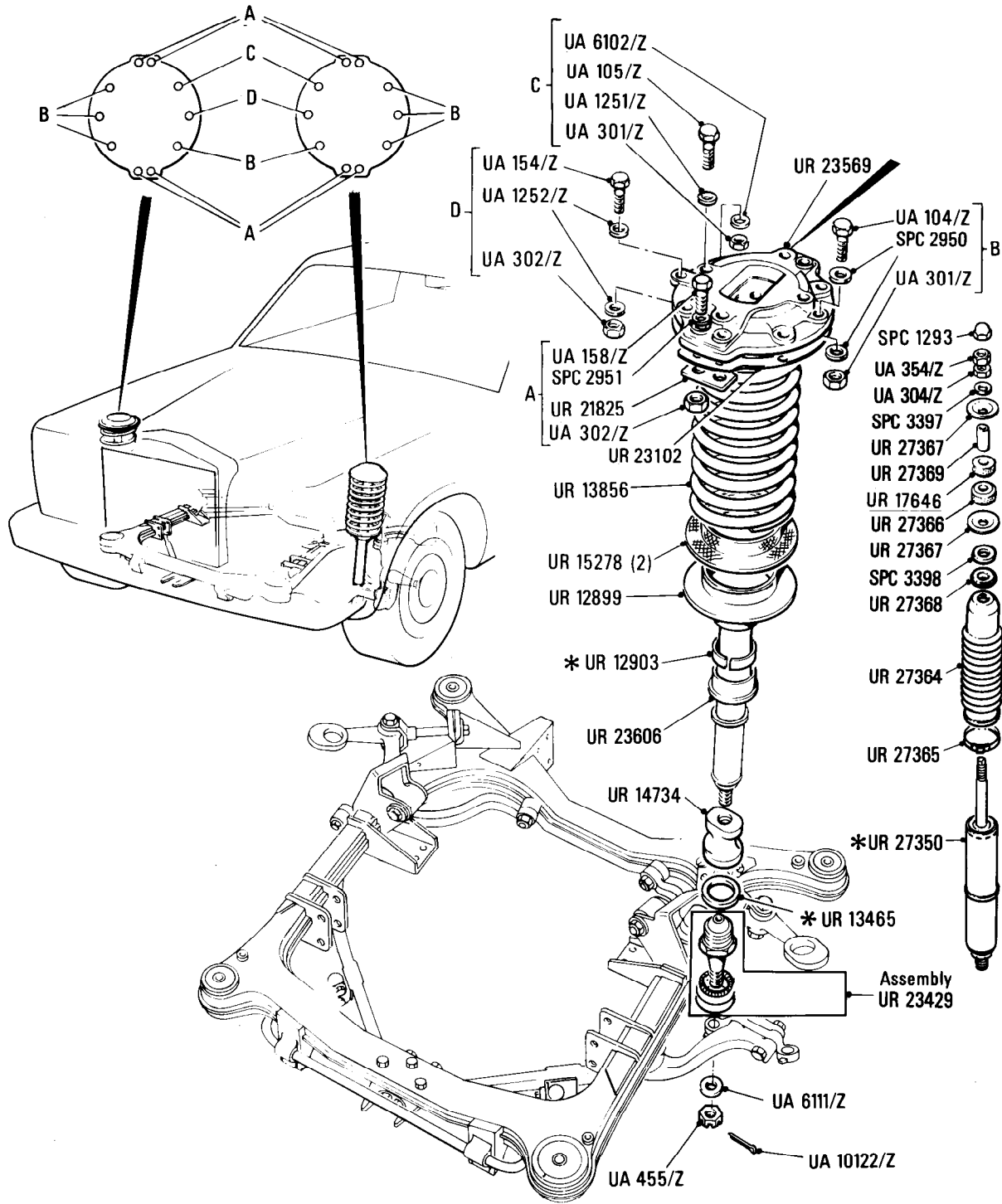
Sub-frame and Suspension
Front Suspension Springs & Dampers

Car serial number

SCAZD0006CCH05037 onwards

Parts marked thus * refer to Additional Information below

◀ Left-hand ▶ Right-hand



Additional Information

© Rolls-Royce Motors Limited 1984

H3•002•00

Rolls-Royce
Corniche

Bentley
Continental

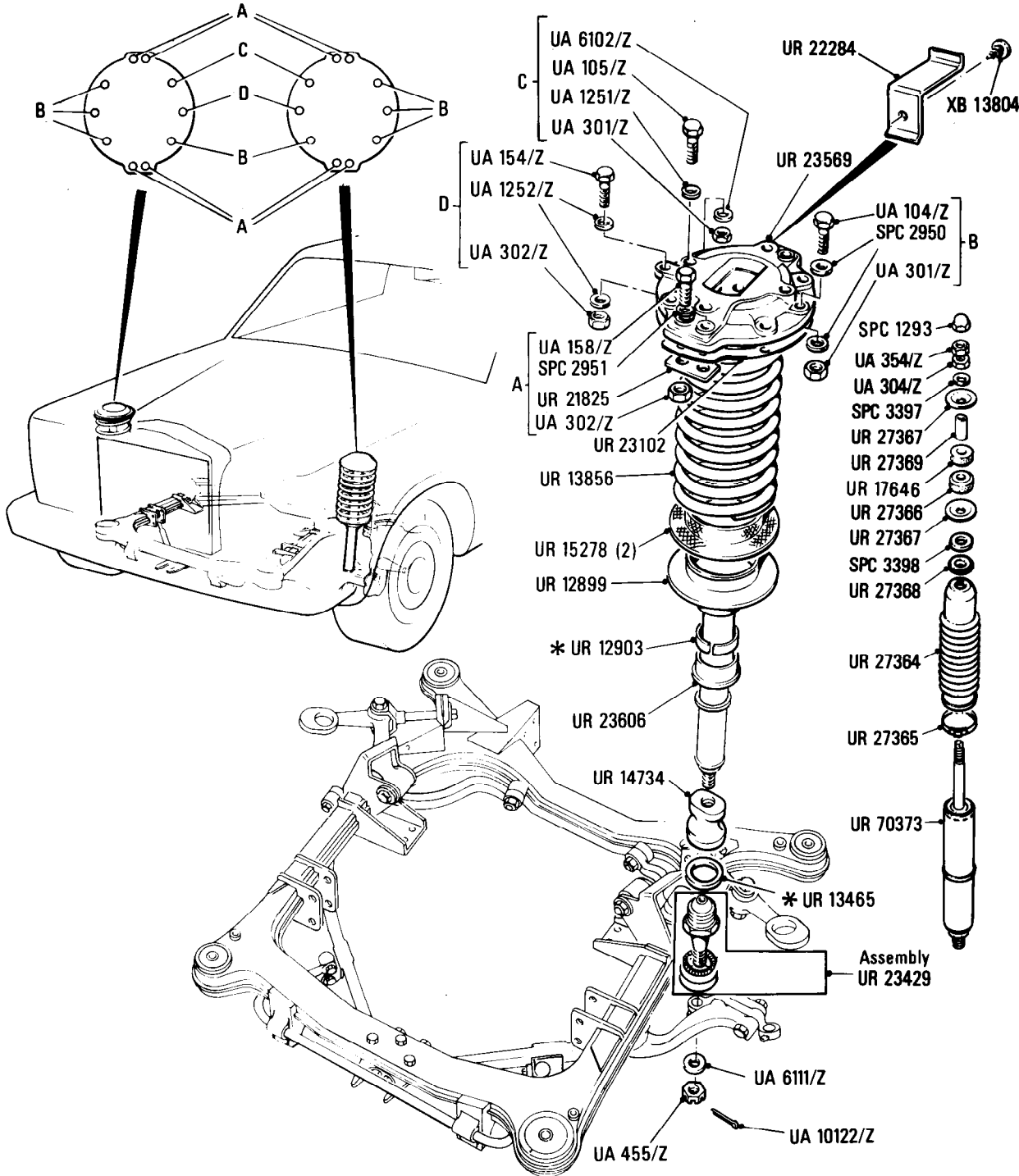
Sub-frame & Suspension
Front Suspension Springs & Dampers

Car serial number

SCAZD0000HCX20010 onwards

Parts marked thus * refer to Additional Information below

◀ Left-hand ▶ Right-hand



Additional Information

© Rolls-Royce Motors Limited 1987

H4·001·01

Rolls-Royce
Corniche

Bentley
Continental

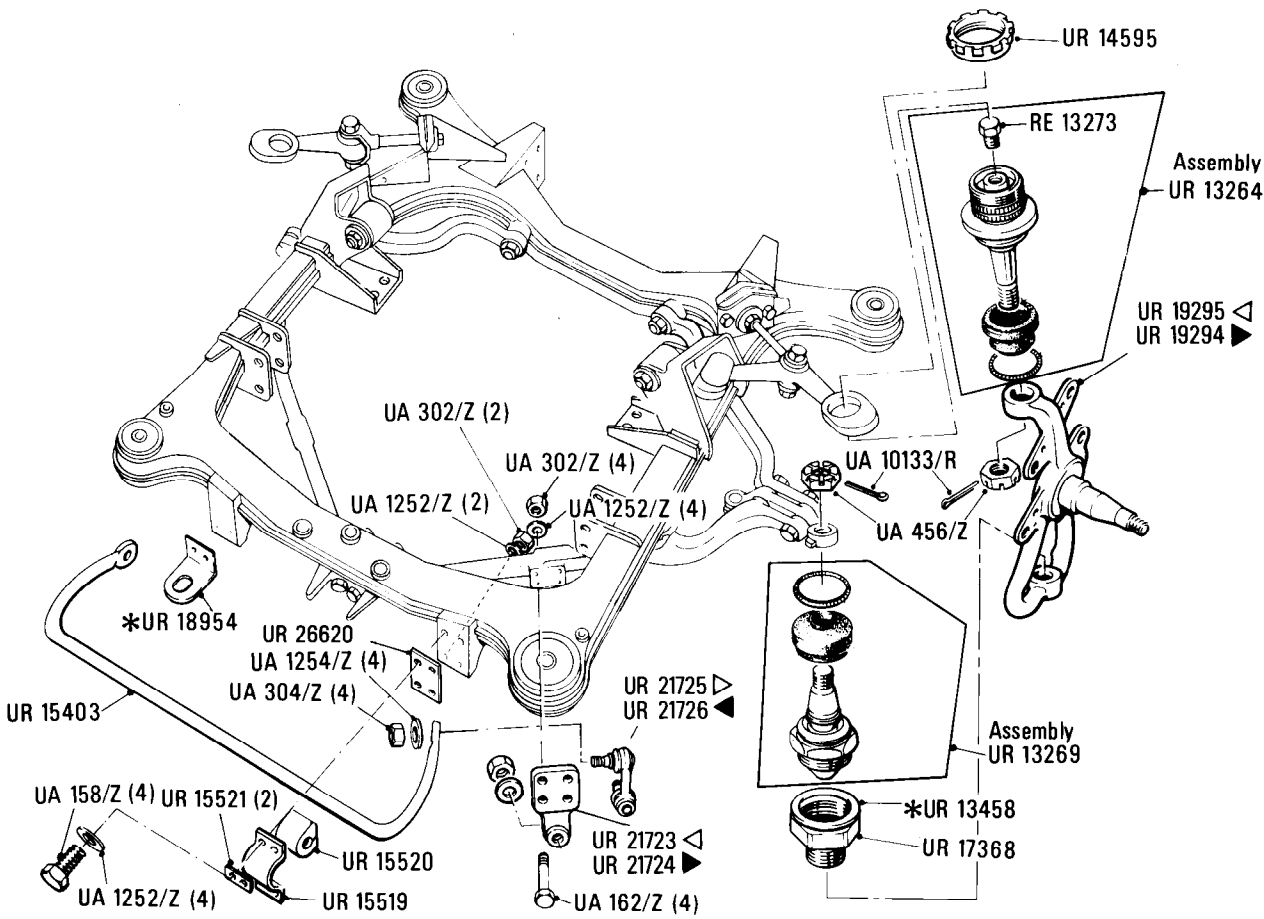
Sub-frame & Suspension
Front Suspension Axle Yoke Ball Joint & Stabilizer

Car serial number

SCAZD0006CCH05037 to 29289

Parts marked thus * refer to Additional Information below

◁ Left-hand ▷ Right-hand



Additional Information

© Rolls-Royce Motor Cars Limited 1991

- *UR 13458 Washer .010 in thick
 - UR 13645 Washer .012 in thick
 - UR 13459 Washer .014 in thick
 - UR 13646 Washer .016 in thick
 - UR 13460 Washer .018 in thick
- As required
- *UR 18954(2) Towing bracket
 - UA 156/Z(4) Two lower holes
- West Germany only

H6•001•00

Rolls-Royce
Corniche

Bentley
Continental

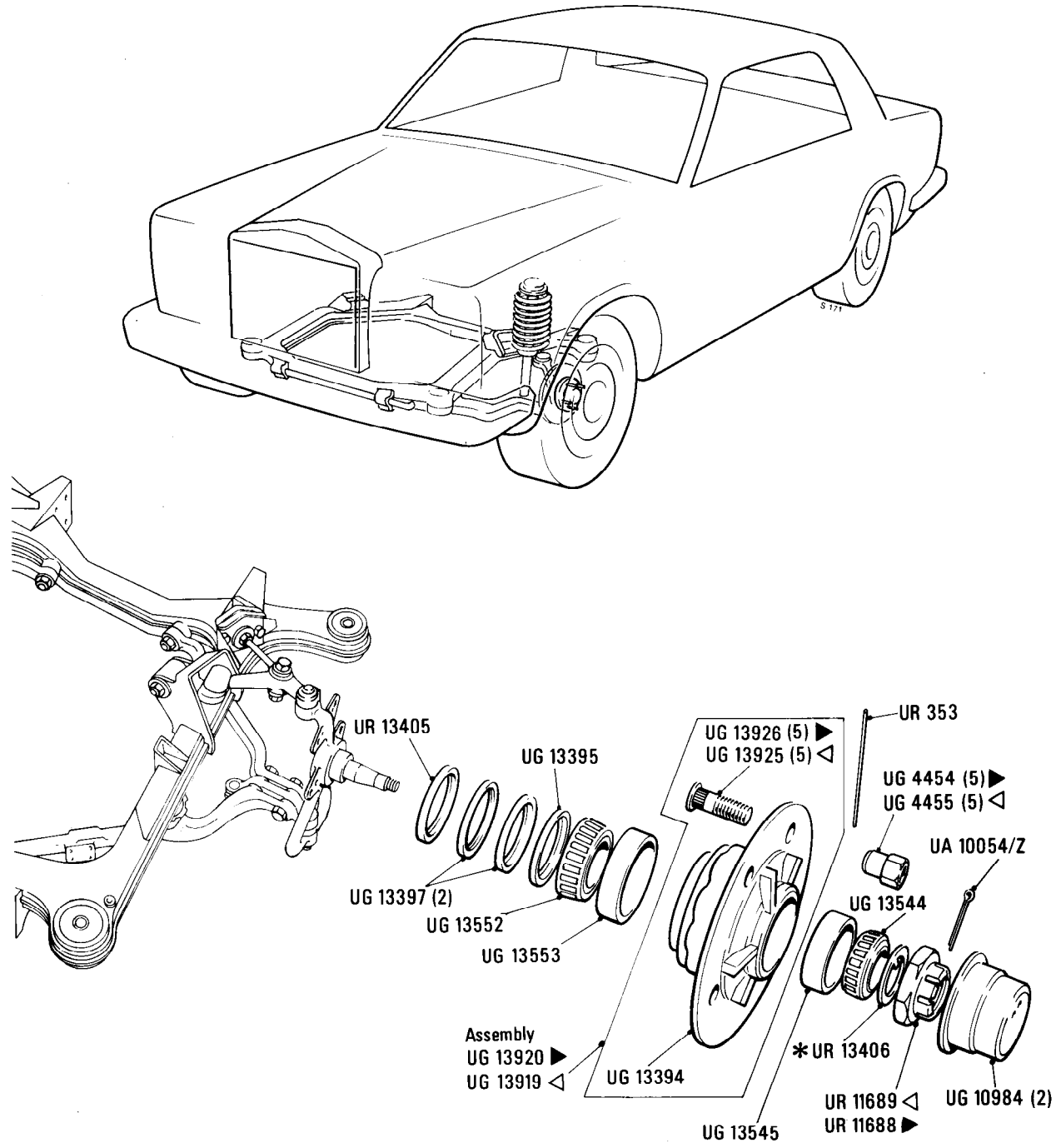
Sub-frame & Suspension
Front Suspension Hub & Bearings

Car serial number

SCAZD0006CCH05037 onwards

Parts marked thus * refer to Additional Information below

◁ Left-hand ▷ Right-hand



Additional Information

© Rolls-Royce Motors Limited 1984

H7
•001•01

Rolls-Royce
Corniche
Convertible

Bentley
Corniche
Convertible

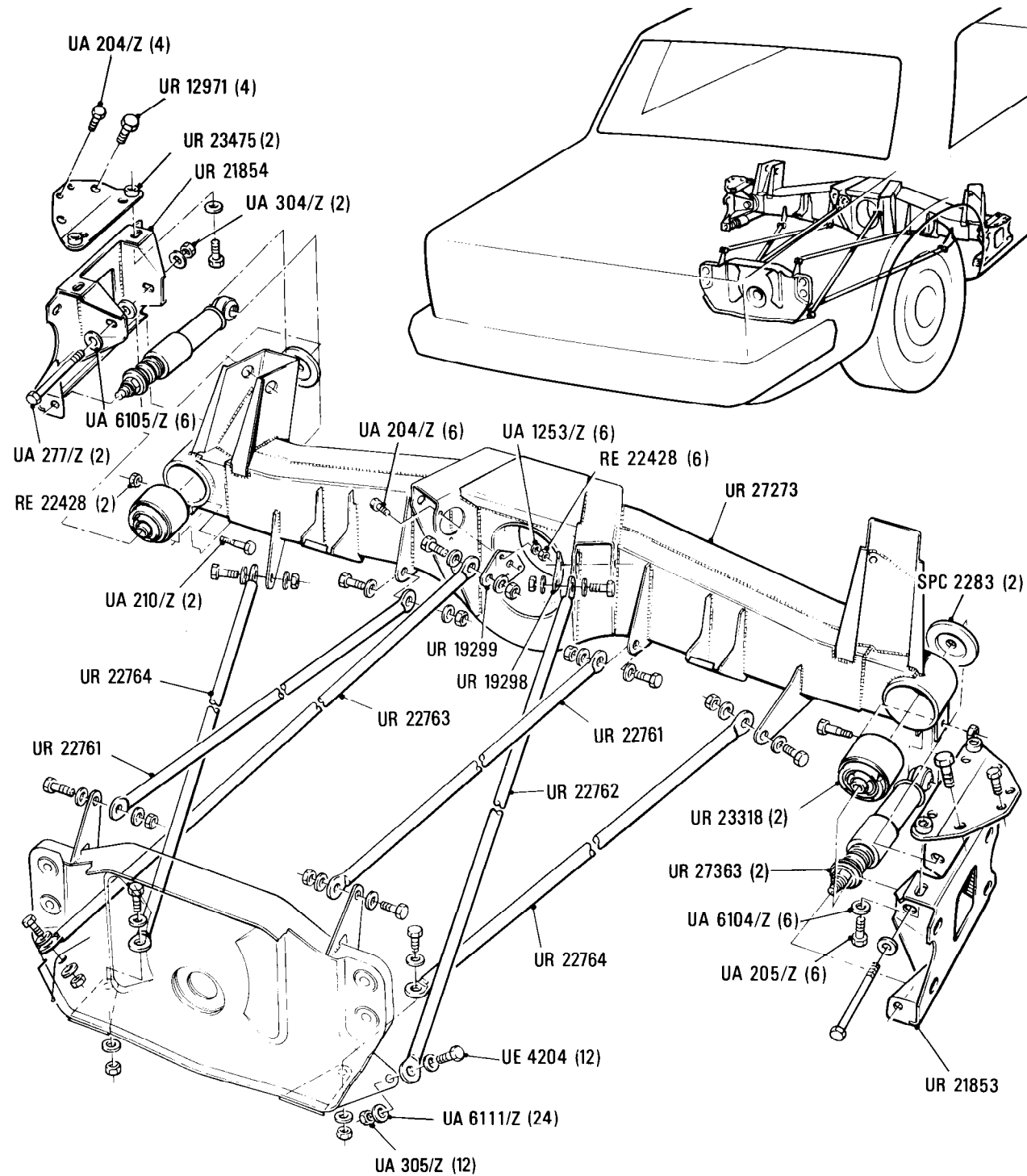
Sub Frame & Suspension Rear Suspension Crossmember & Mountings

Car serial number

SCAZD0006CCH05037 onwards

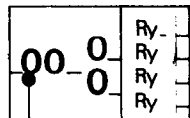
Parts marked thus * refer to Additional Information below

◀ Left-hand ▶ Right-hand



Additional Information

© Rolls-Royce Motors Limited 1984



Univers 55
8d/9pt.

Univers 65
14pt.
Letraset sheets
403 and 3591

Copy
Univers 65
8d/9pt.

H7·002·00

Rolls-Royce
Corniche

Bentley
Continental

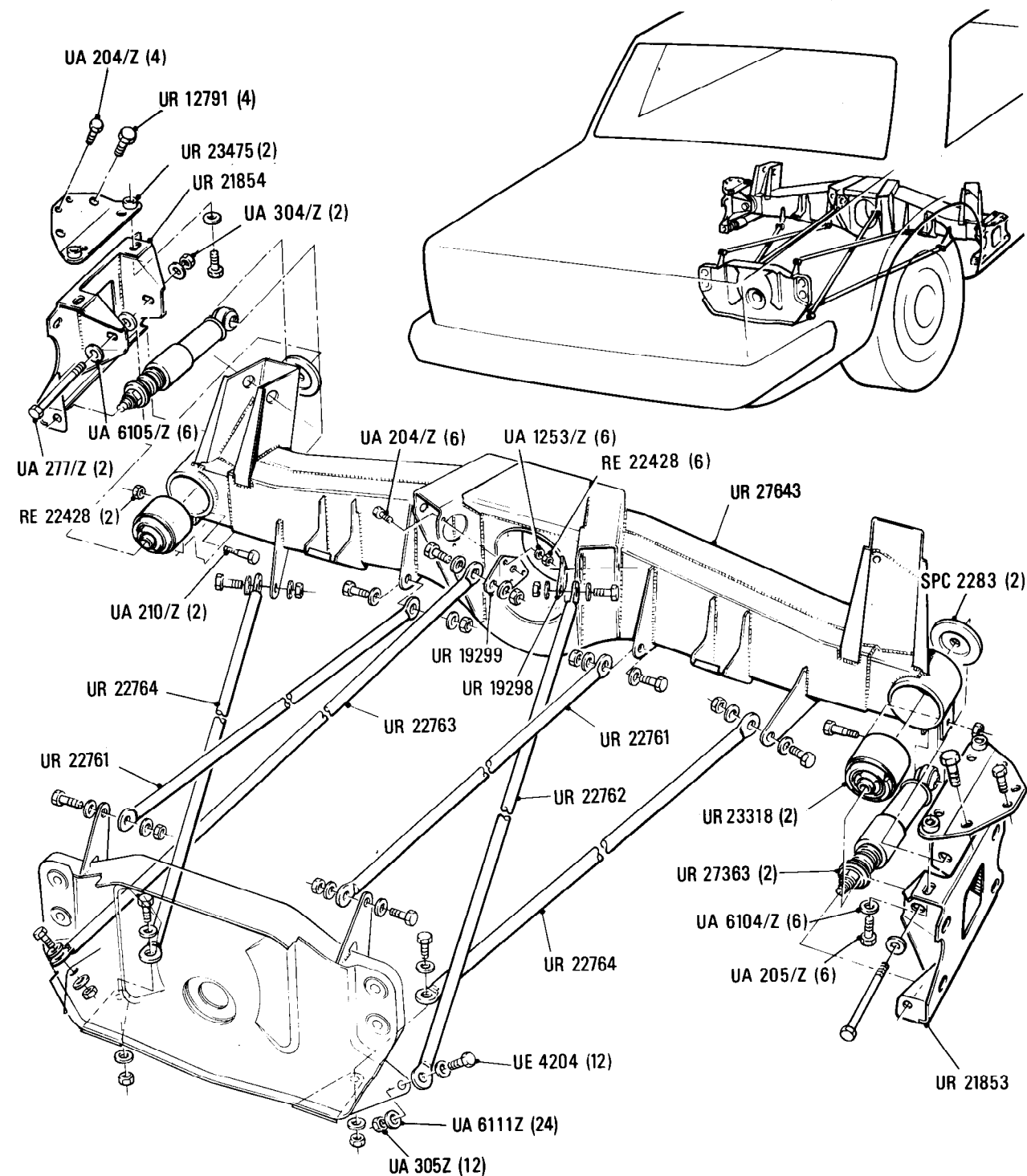
Car serial number

SCAZD0000HCX20010 onwards

Sub-frame and Suspension Rear Suspension Crossmember & Mountings

Parts marked thus * refer to Additional Information below

◀Left-hand ▶Right-hand



Additional Information

© Rolls-Royce Motors Limited 1987

Ry
Ry
Ry

Univers 65 and 55
12pt set solid

H8·001·01

Rolls-Royce
Corniche

Bentley
Continental

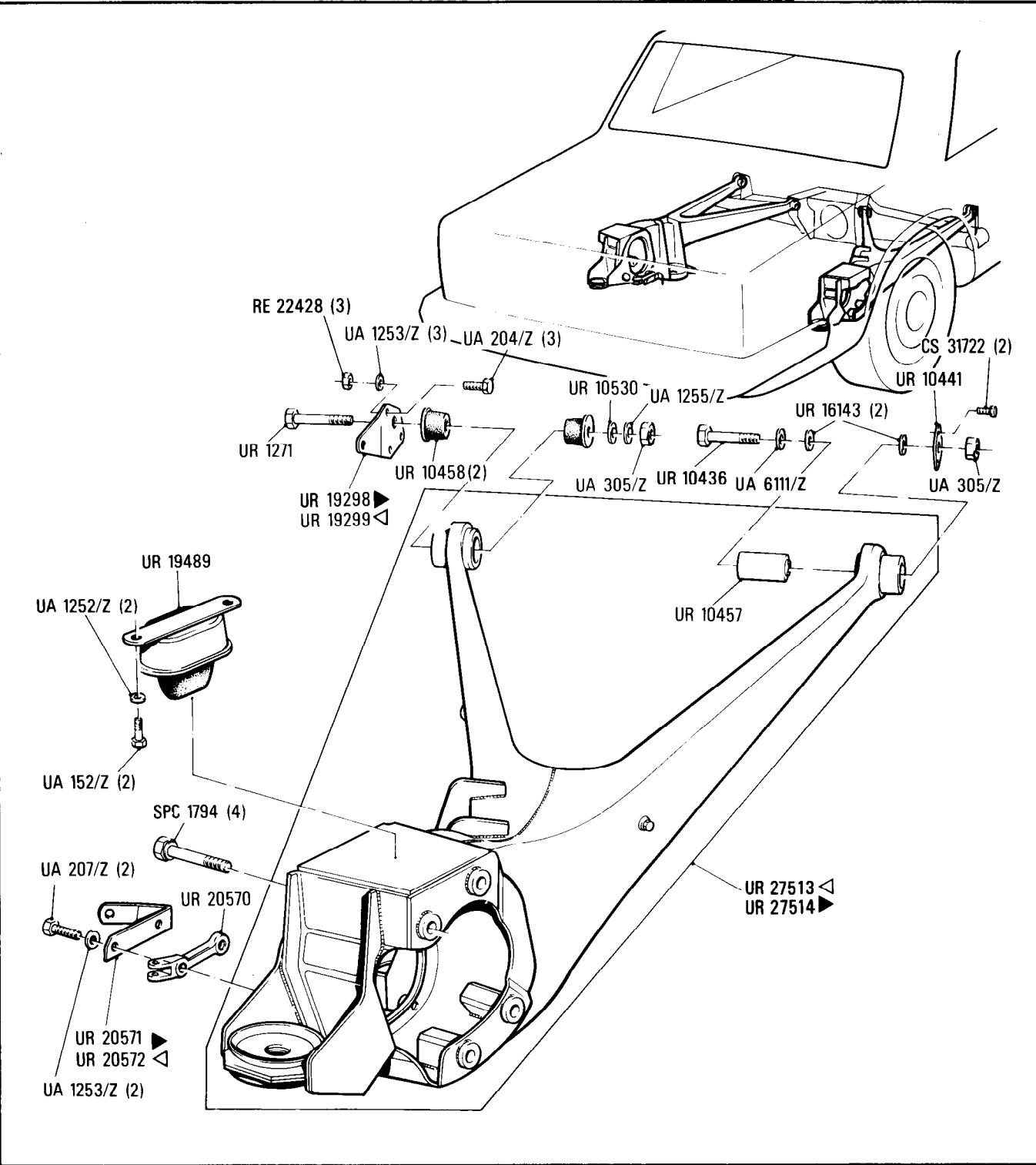
Sub-frame & Suspension
Trailing Arm

Car serial number

SCAZD0006CCH05037 to 16968

Parts marked thus * refer to Additional Information below

◀Left-hand ▶Right-hand



Additional Information

© Rolls-Royce Motor Cars Limited 1991

H8·002·00

Rolls-Royce
Corniche

Bentley
Continental

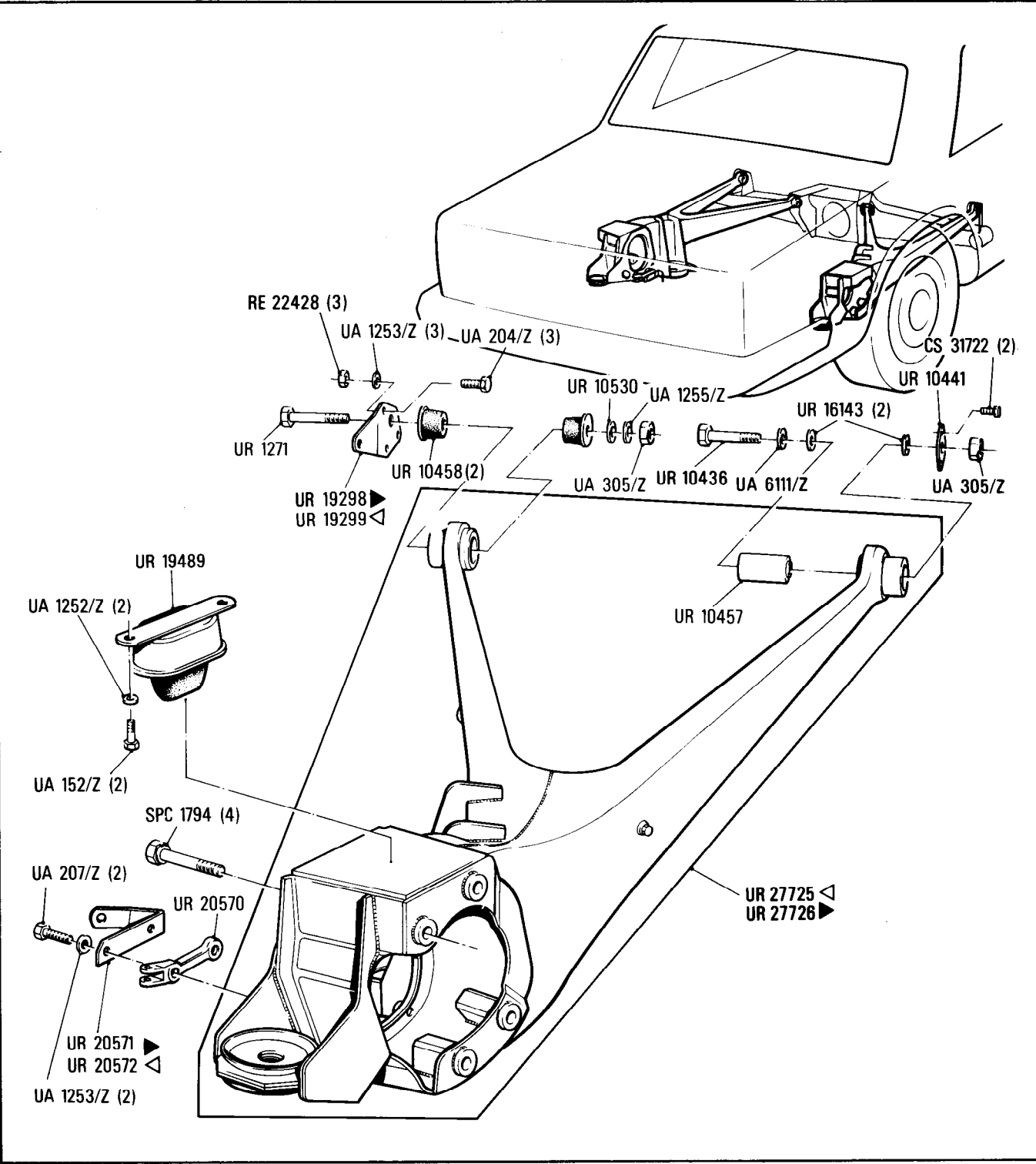
Car serial number

SCAZD0000HCX20010 onwards

Sub-frame & Suspension
Trailing Arm

Parts marked thus * refer to Additional Information below

◀Left-hand ▶Right-hand



Additional Information

© Rolls-Royce Motor Cars Limited 1991

H10
•001•00

Rolls-Royce
Corniche
Convertible

Bentley
Corniche
Convertible

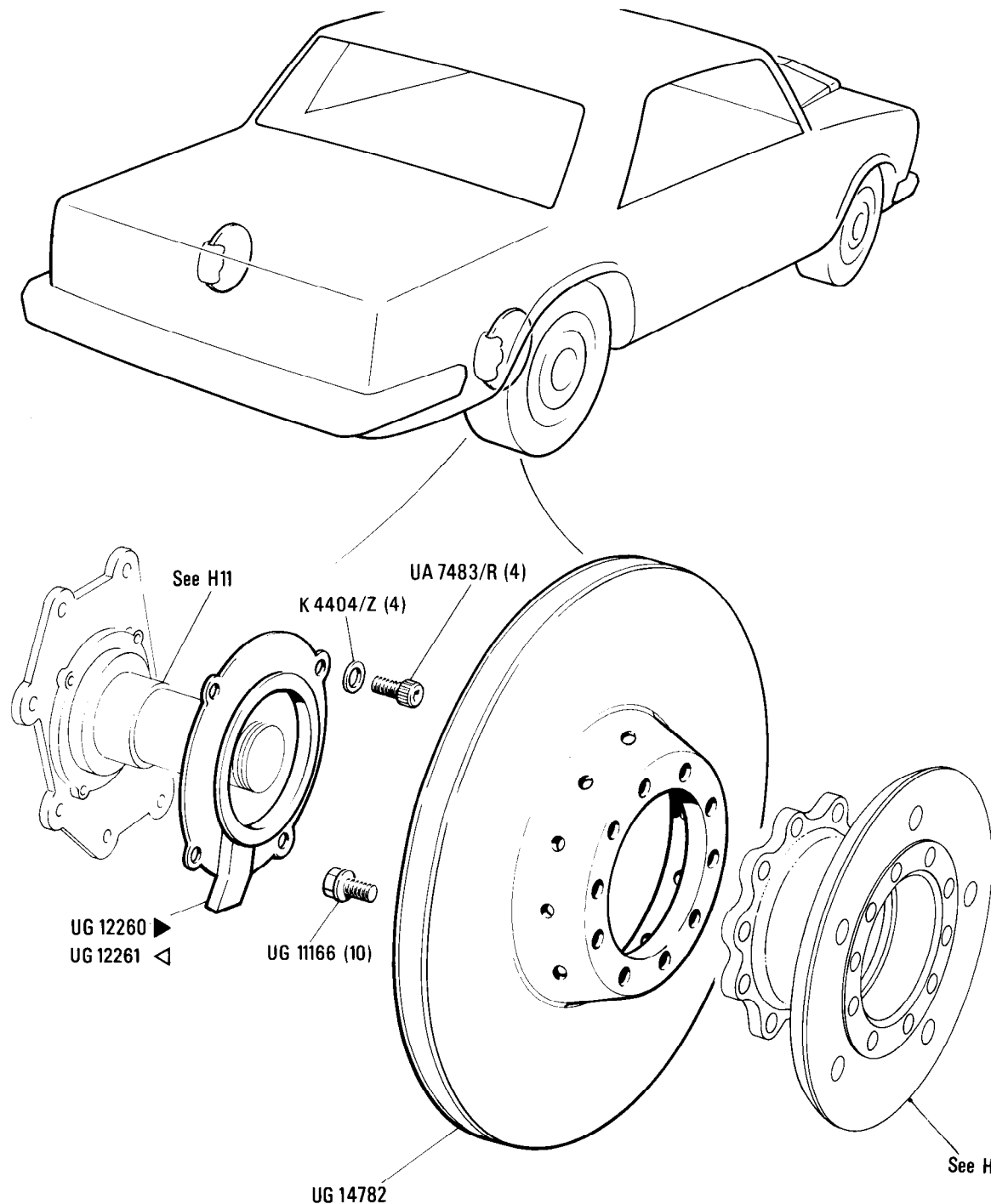
Sub-frame & Suspension Rear Discs

Parts marked thus * refer to Additional Information below

◁ Left-hand ▶ Right-hand

Car serial number

From SCAZD0006CHO5037 onwards



Additional Information

Parts marked thus □ denote part change from preceding fiche

H11
•001•00

Rolls-Royce
Corniche
Convertible

Bentley
Corniche
Convertible

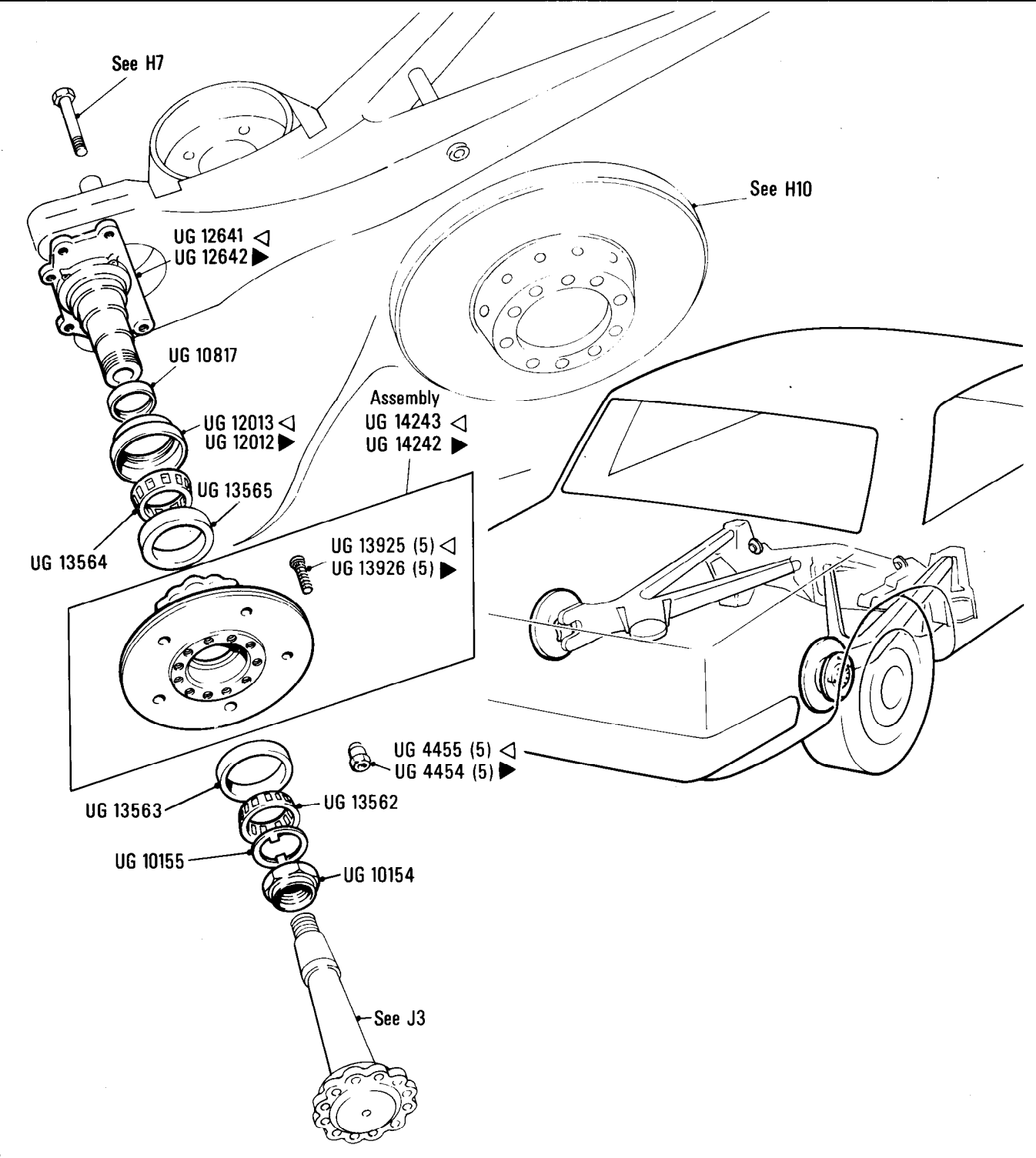
Car serial number

From SCAZD0006CH05037

Sub-frame & Suspension
Rear Suspension, Hub & Bearings

Parts marked thus * refer to Additional Information below

◁ Left-hand ▷ Right-hand



Additional Information

© Rolls-Royce Motors Limited 1984

H12
·001·01

Rolls-Royce
Corniche
Bentley
Continental

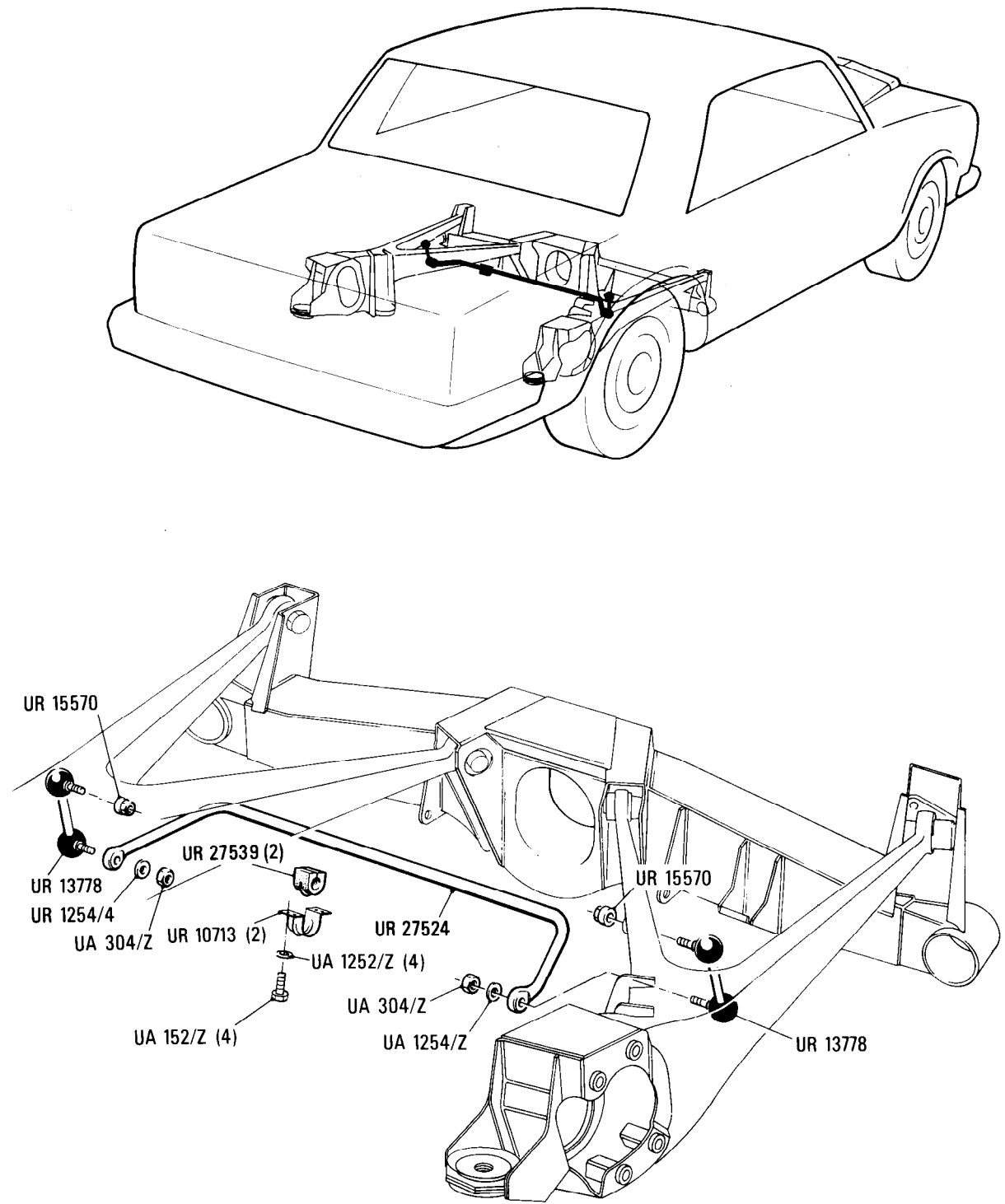
Car serial number

SCAZD0006CCH05037 to 16968

Sub-frame & Suspension
Rear Suspension Stabilizer

Parts marked thus * refer to Additional Information below

◀ Left-hand ▶ Right-hand



Additional Information

© Rolls-Royce Motors Limited 1987

H12
•002•00

Rolls-Royce
Corniche

Bentley
Continental

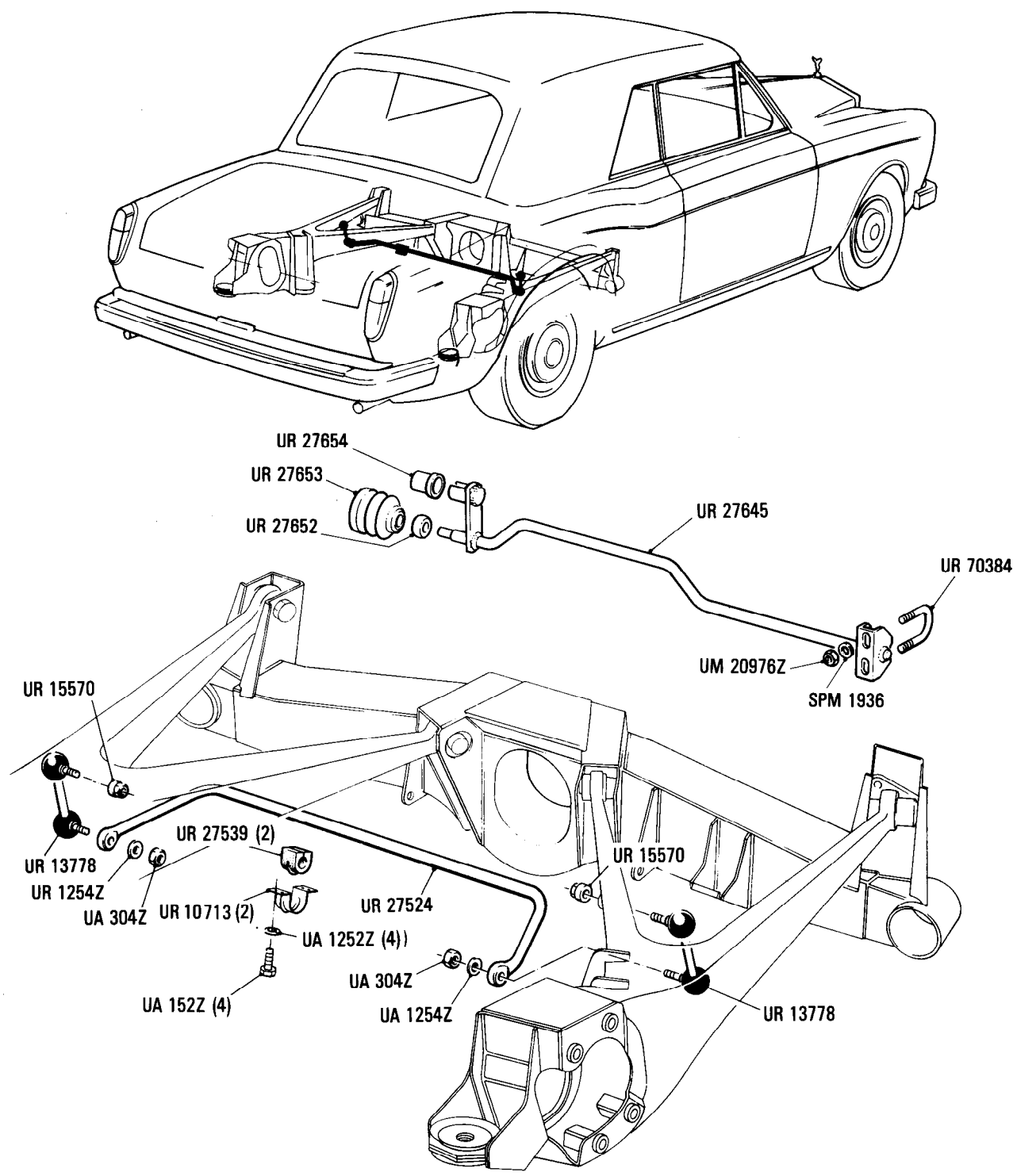
Car serial number

SCAZD0000HCX20010 onwards

Sub-frame and Suspension
Rear Suspension Stabilizer

Parts marked thus * refer to Additional Information below

◀ Left-hand ▶ Right-hand



Additional Information

© Rolls-Royce Motor Cars Limited 1987

H12
•003•00

Rolls-Royce
Corniche

Bentley
Continental

Sub-Frame & Suspension

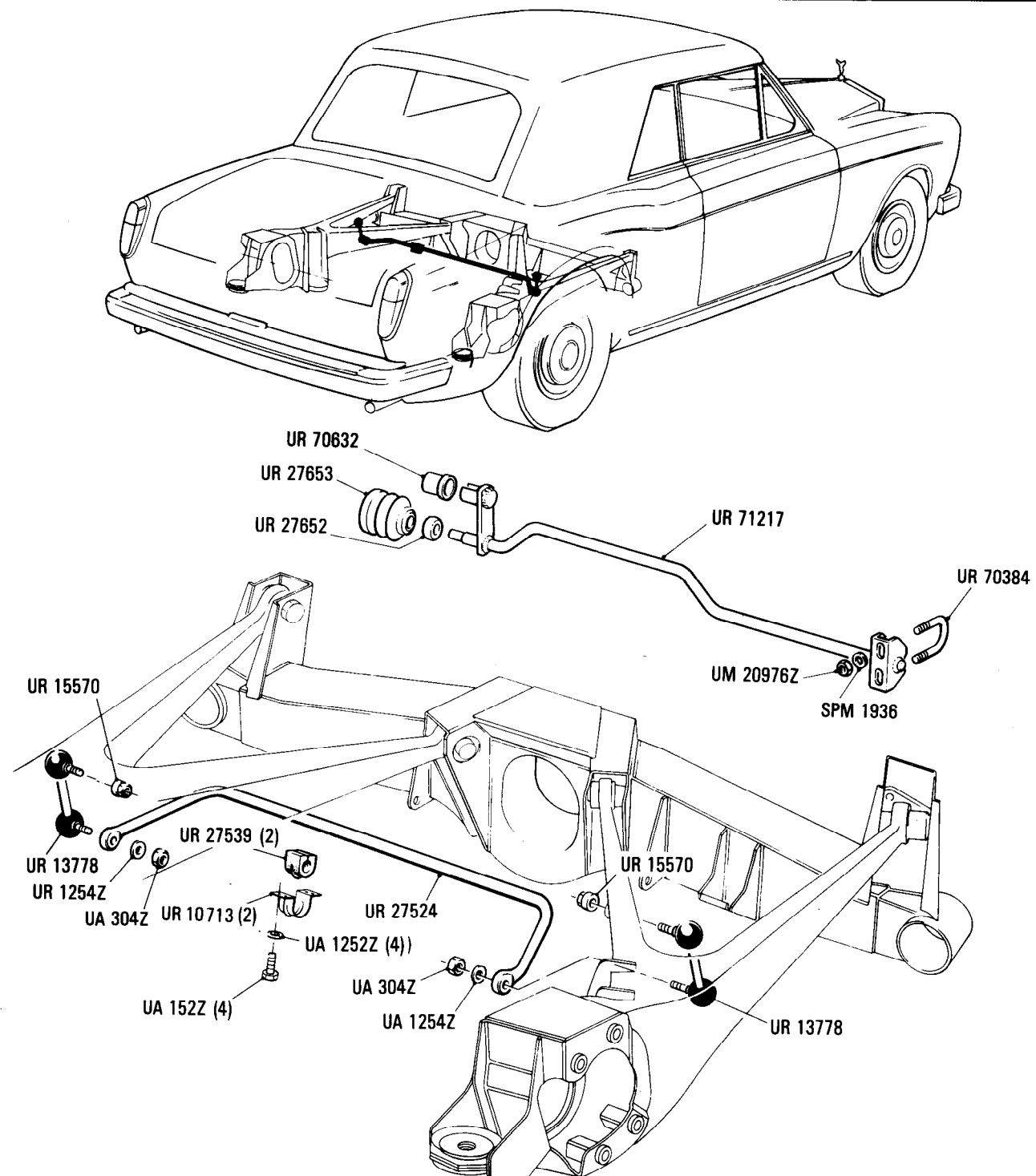
Rear Suspension Stabilizer

Parts marked thus * refer to Additional Information below

◁ Left-hand ▷ Right-hand

Car serial number

Corniche & Continental
SCAZD02A7JCX24003, JCX 24055 onwards



Additional Information

© Rolls-Royce Motor Cars Limited 1987