

# TWO-DOOR MOTOR CARS 1980-1989

## Final Drive Menu

- J1            Half-shaft with lobro joint  
              Input shaft and differential
- J3            Final drive crossmember and torque arm
- J4            Final drive (service kit)

J1•001•00

Rolls-Royce  
Corniche

Bentley  
Continental

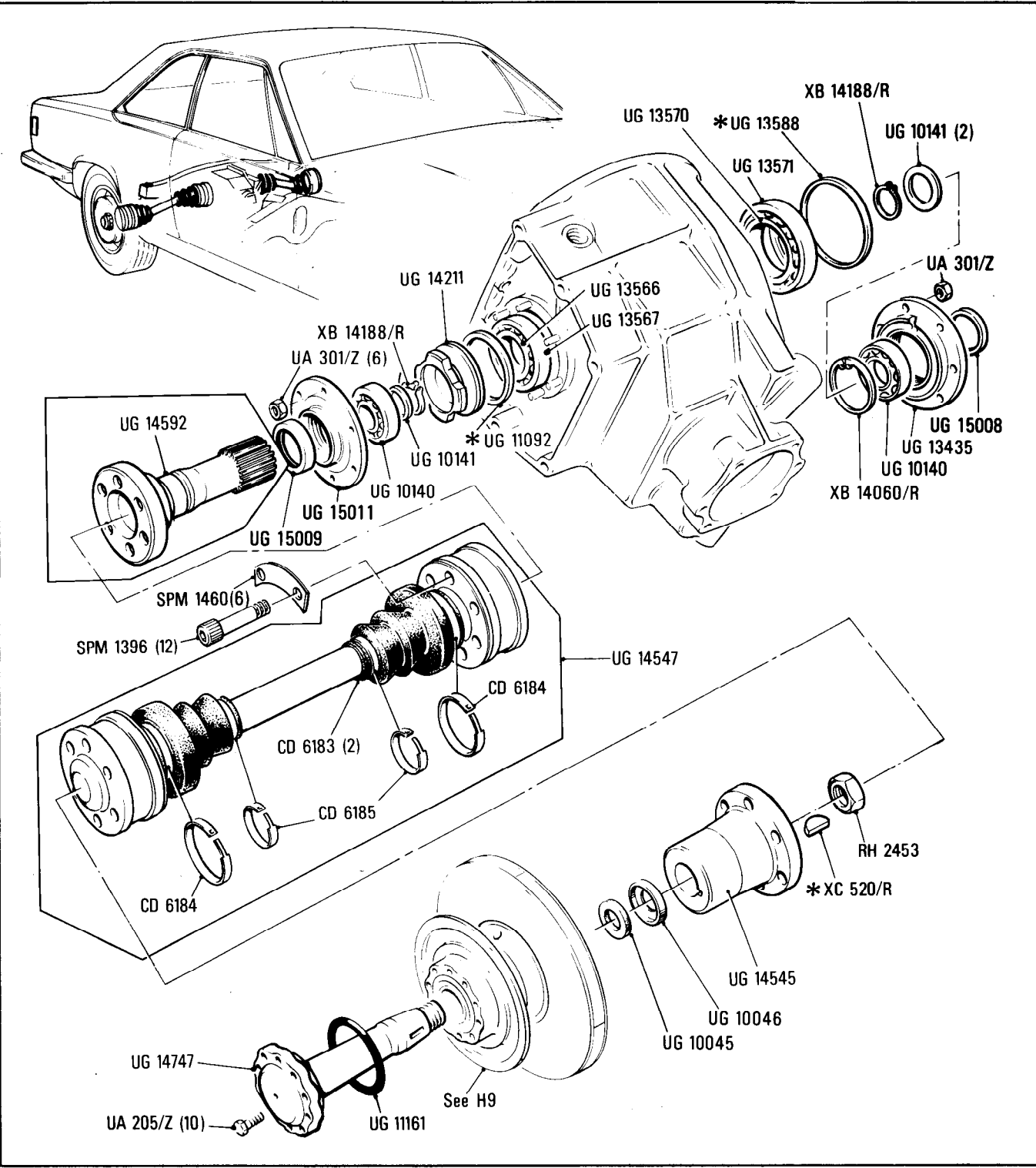
**Final Drive**  
Half-shaft with Lobro Joint

Car serial number

SCAZD0006CCH05037 onwards

Parts marked thus \* refer to Additional Information below

◀ Left-hand ▶ Right-hand



**Additional Information**

© Rolls-Royce Motors Limited 1984

* UG 13588 Washer .223 in	* UG 11092 Washer .250 in	1 off as required
UG 13589 Washer .227 in	UG 11093 Washer .260 in	
UG 13590 Washer .231 in	UG 14204 Washer .270 in	1 off as required
UG 13591 Washer .235 in	UG 14205 Washer .280 in	
UG 13592 Washer .239 in	UG 14206 Washer .290 in	1 off as required
UG 13593 Washer .243 in	UG 14207 Washer .300 in	
UG 13594 Washer .247 in	UG 14208 Washer .310 in	1 off as required
UG 13595 Washer .251 in	*XC 520/R Key .2185 in	
UG 13596 Washer .255 in	XC 521/R Key .219 in	1 off as required
UG 13597 Washer .260 in	XC 522/R Key .2195 in	
	XC 523/R Key .220 in	

J1-002-00

Rolls-Royce  
Corniche

Bentley  
Continental

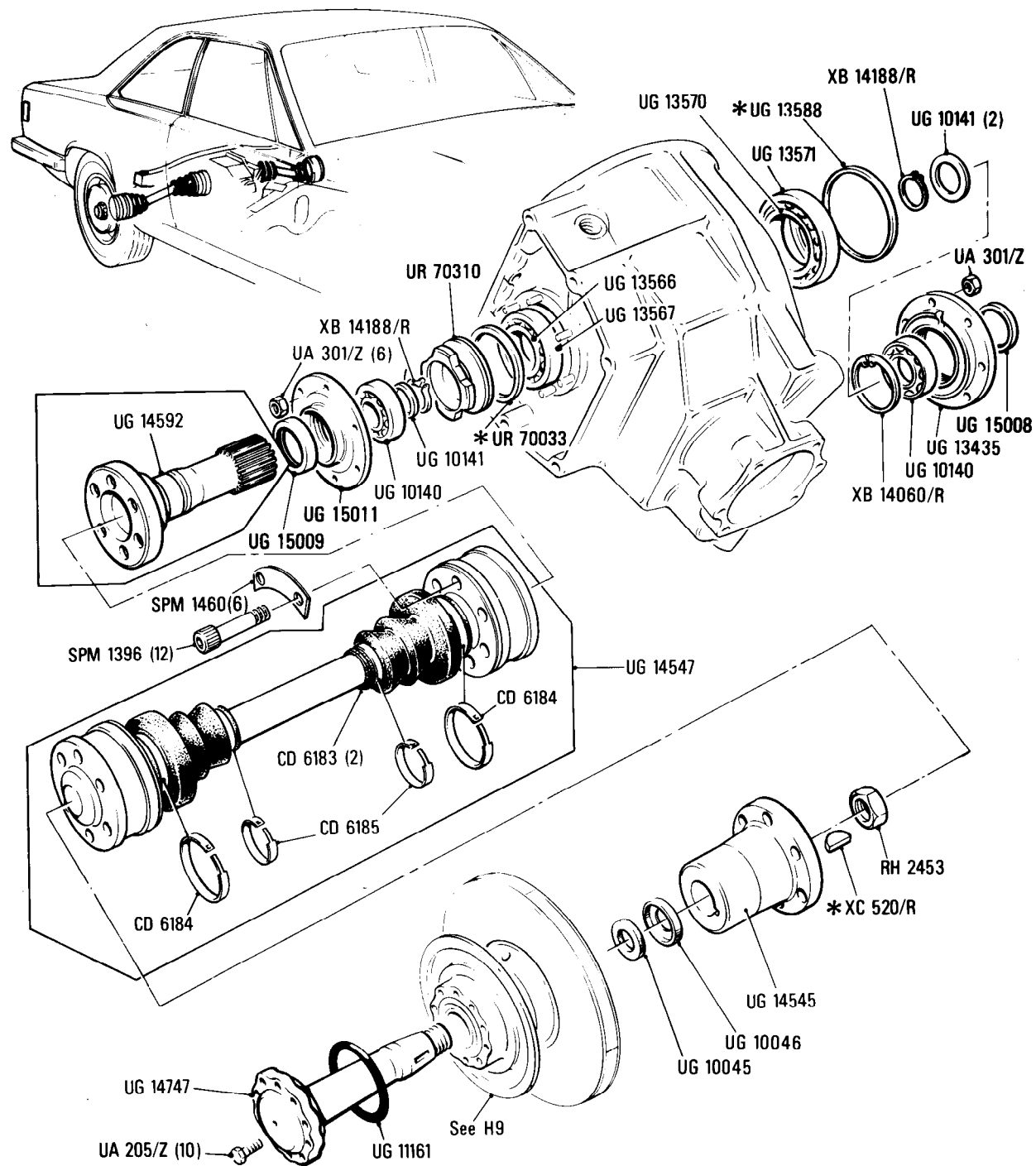
# **Final Drive** Half Shaft with Lobro Joint

Car serial number

From SCAZD02AHCX20010 onwards

Parts marked thus \* refer to Additional Information below

◁ Left-hand ▷ Right-hand



Additional Information

© Rolls-Royce Motor Cars Limited 1987

J2·001·00

Rolls-Royce  
Corniche

Bentley  
Continental

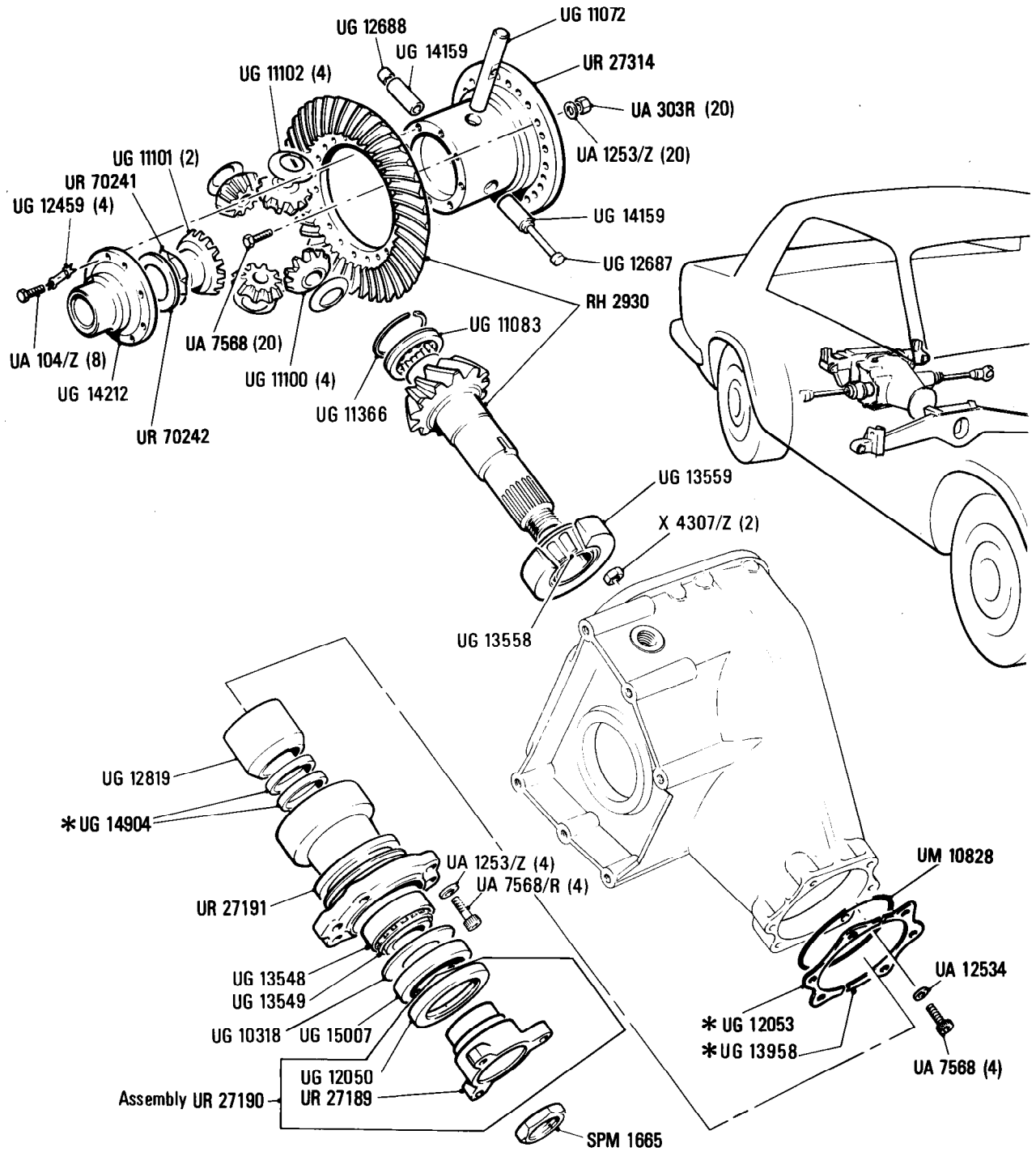
**Final Drive**  
**Input Shaft & Differential**

**Car serial number**

SCAZD0000HCX20010 onwards

Parts marked thus \* refer to Additional Information below

◁ Left-hand ▷ Right-hand



**Additional Information**

© Rolls-Royce Motor Cars Limited 1987

* UG 14904 6.858 (.270)	* UG 12053 .125
UG 14905 6.883 (.271)	UG 12054 .137
UG 14906 6.909 (.272)	UG 12055 .149
UG 14907 6.934 (.273)	
UG 14908 6.959 (.274)	
UG 14909 6.985 (.275)	
UG 14910 7.112 (.280)	
UG 14911 7.239 (.285)	
UG 14912 7.366 (.290)	
UG 14913 7.493 (.295)	
UG 14914 7.620 (.300)	

J3·010·00

Rolls-Royce  
Corniche

Bentley  
Continental

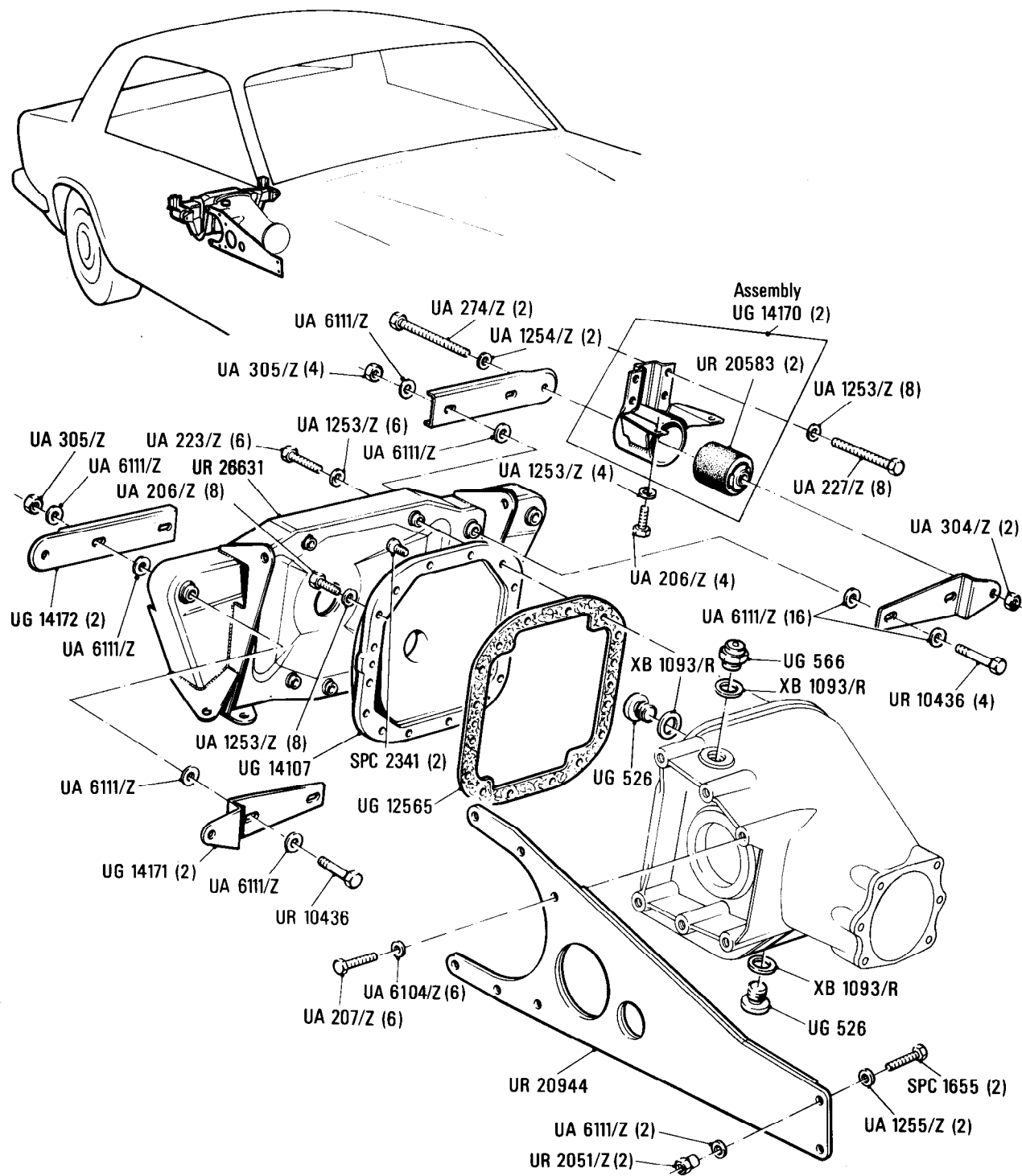
Car serial number

From SCAZD0000HCX20010 onwards

**Final Drive**  
Final Drive Crossmember & Torque Arm

Parts marked thus \* refer to Additional Information below

◁ Left-hand ▷ Right-hand



Additional Information

© Rolls-Royce Motor Cars Limited 1987

J4•001•00

Rolls-Royce  
Corniche

Bentley  
Continental

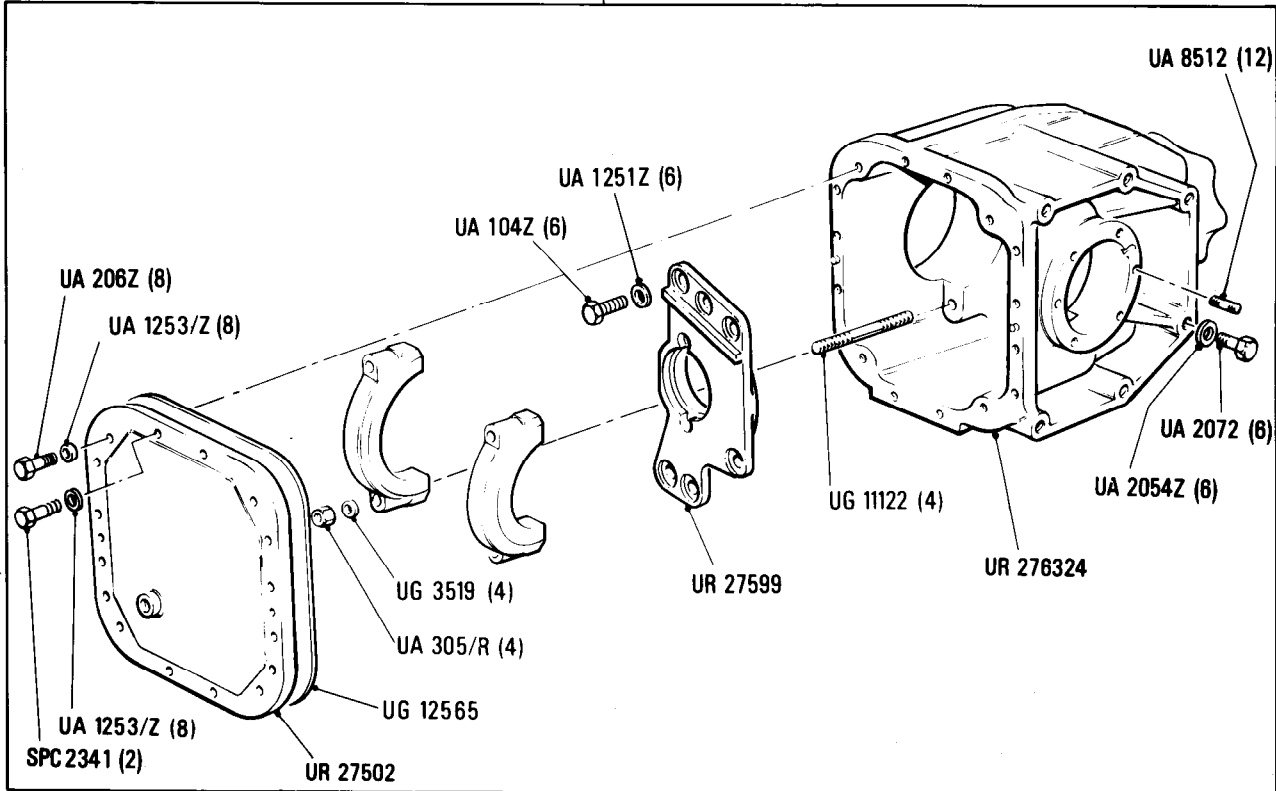
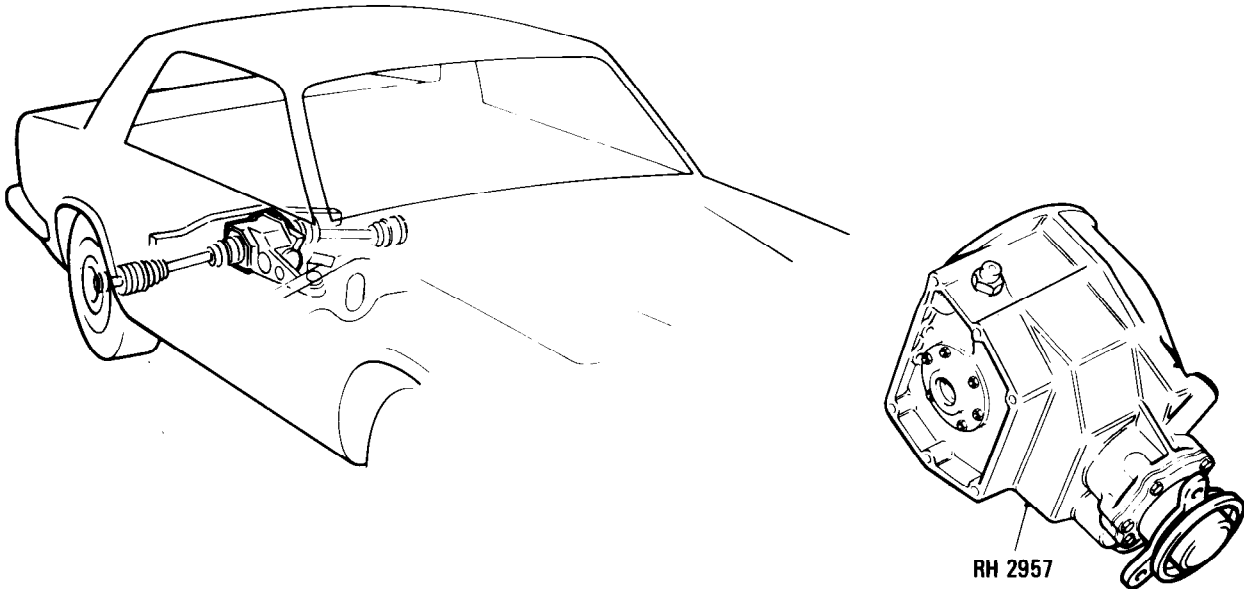
**Final Drive**  
Final Drive (Service Kit)

**Car serial number**

From SCAZD0000HCX20010 onwards

Parts marked thus \* refer to Additional Information below

◀ Left-hand ▶ Right-hand



**Additional Information**

© Rolls-Royce Motor Cars Limited 1987