

TWO-DOOR MOTOR CARS 1980-1989

Electrical Systems Menu

M1	Battery box and switches Battery well clamps cover and cables
M2	Fuseboard fittings and relays
M3	Not used
M4	Alternator and regulator Alternator mounting Motorola alternator Motorola alternator mounting
Mc1	Automatic air conditioning switches, fan speed module and diode board
Mc2	Automatic air conditioning servo assembly Electronic control unit servo
Mc3	Air temperature sensors
Me1	Starter motor and relay Starter motor, relay and mounting bracket
Me2	Ignition distributor
Me3	Ignition coil, leads and sparking plugs
Me4	Not used
Me5	Not used
Me6	Electronic control unit (ECU) fuel injection meter
Ms1	Switchbox
Ms2	Headlamps and dipswitch Headlamp and relay headlamp dip
Ms3	Front lamps
Ms4	Not used
Ms5	Rear lamps and stop lamps switch, stop lamp warning relay Rear fog lamp, reverse lamp high mounted stop lamp Rear fog lamps, reverse lamp and high mounted stop lamp
Ms6	Interior lamps
Ms7	Interior switches
Ms8	Interior door switches
Ms9	Mirror switches, rear window inhibit switch Seat, door, mirror and rear window isolation switches Seat and door mirror switches Seat memory switches and seat switches centre console
Ms10	Windscreen wiper mechanism and switch, wash and intermittent wipe control unit
Ms11	Windscreen washers and control box, intermittent wipe and washer level amplifier
Ms12	Headlamp wiper mechanism
Ms13	Steering column switches
Ms14	Hirschmann aerial, speakers, radio tape player and filter Merlin aerial
Ms15	Horns and mounting bracket
Ms16	Instruments and warning lights
Ms17	Lower facia panel switches
Ms18	Cigar lighters
Ms19	Not used
Ms20	Not used
Ms21	Not used
Ms22	Not used

TWO-DOOR MOTOR CARS 1980-1989

Ms23	Not used
Ms24	Not used
Ms25	Not used
Ms26	Automatic speed control
Ms27	Assembly looms and link cables
Ms28	Cellular telephone and fittings
Mt1	Gearbox actuator and loom assembly RH 2797
	Gearbox actuator and loom assembly UD 70286 A1

M1•001•01

Rolls-Royce
Corniche
Convertible

Bentley
Corniche
Convertible

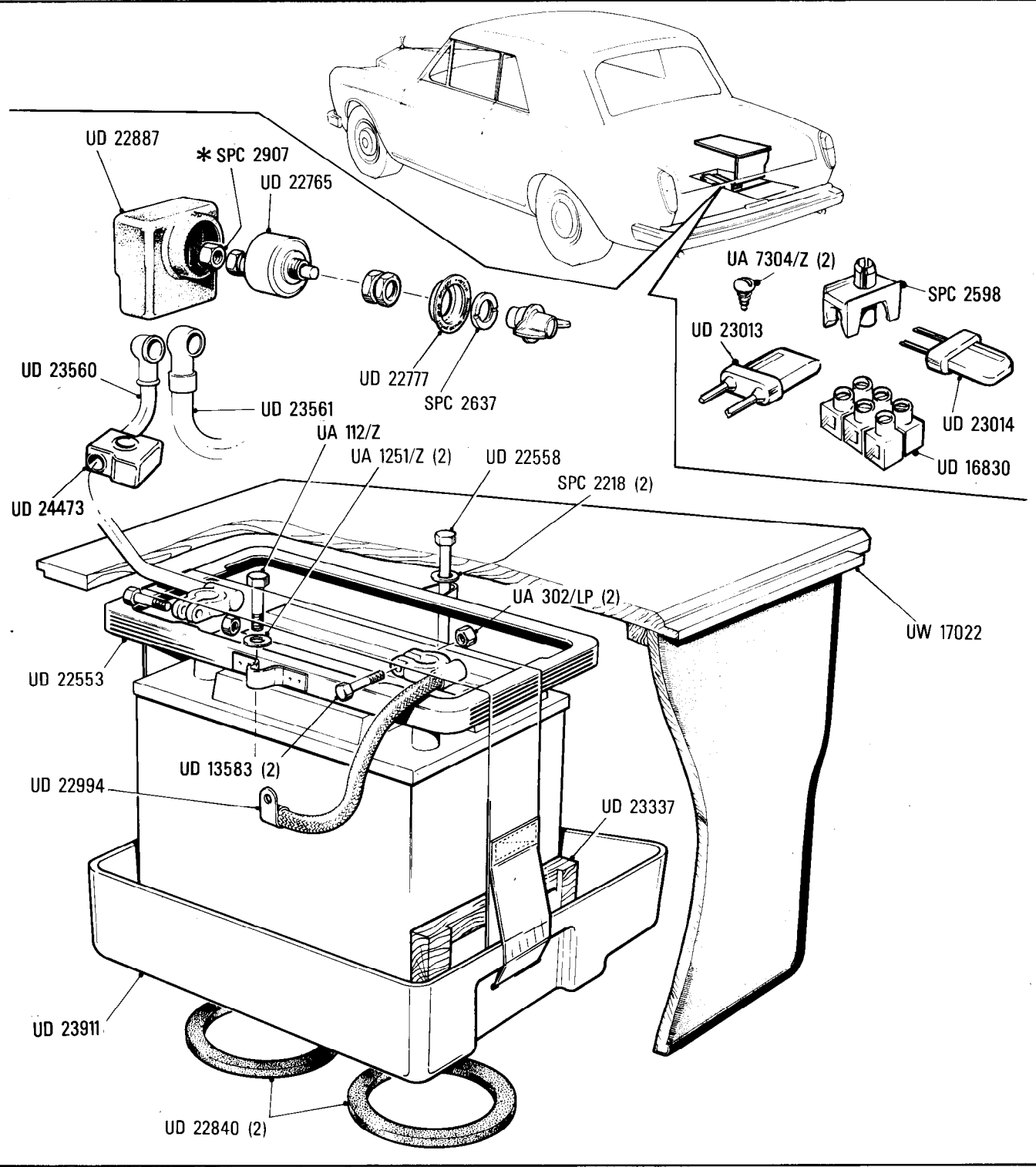
Car serial number

From VIN number
SCAZD0006CCH05037 to 16968

Electrical System
Battery Box & Switches

Parts marked thus * refer to Additional Information below

◁ Left-hand ▷ Right-hand



Additional Information

© Rolls-Royce Motors Limited 1984

M1•020•03

Rolls-Royce
Corniche
Bentley
Continental

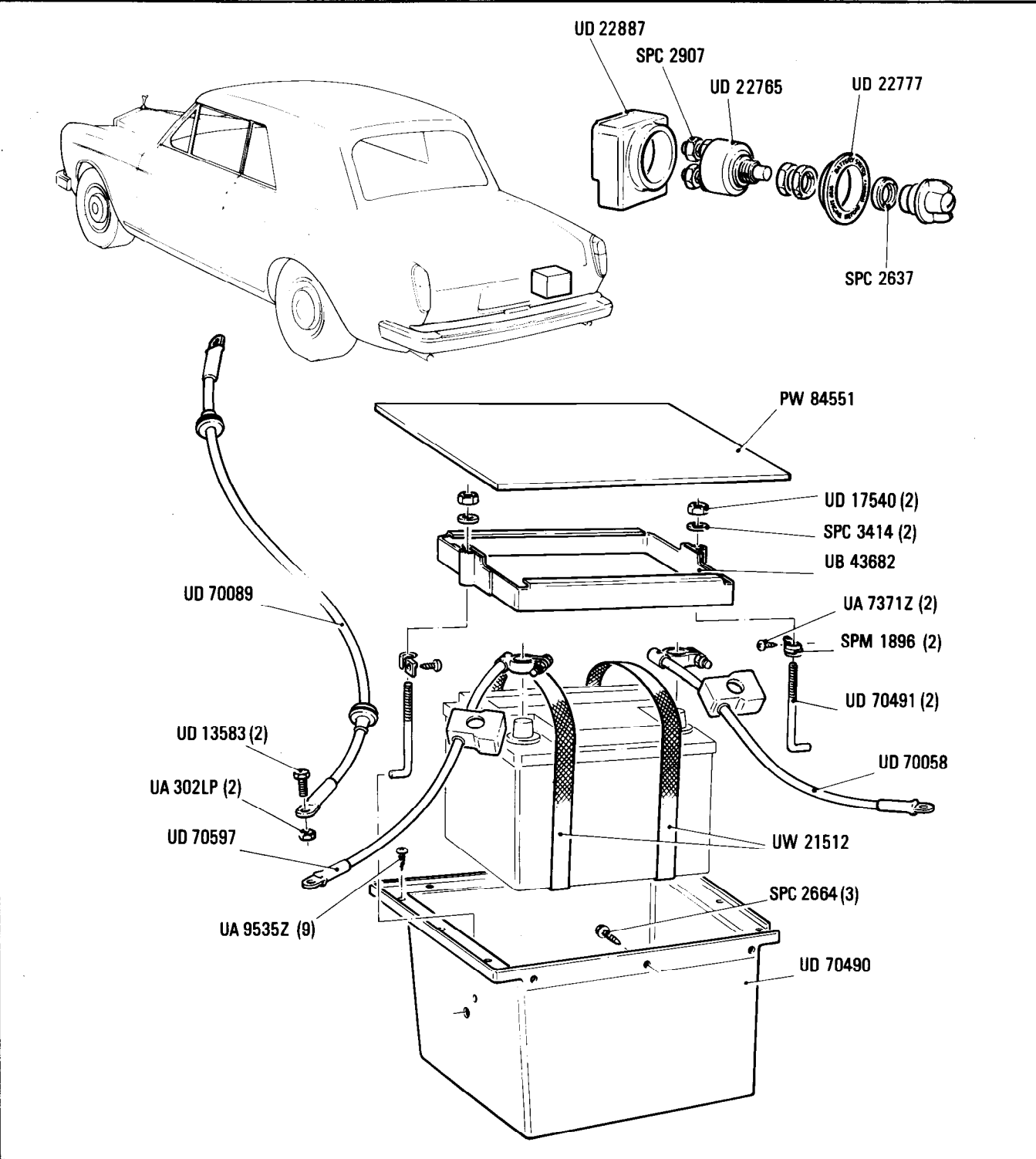
Car serial number

SCAZD02A0HCX20010 to 29290

Electrical System
Battery Well, Clamps, Cover, Cables & Switch

Parts marked thus * refer to Additional Information below

◀ Left-hand ▶ Right-hand



Additional Information

UD 70585 Battery label in Arabic

© Rolls-Royce Motor Cars Limited 1991

M2-001-01

Rolls-Royce
Corniche

Bentley
Continental

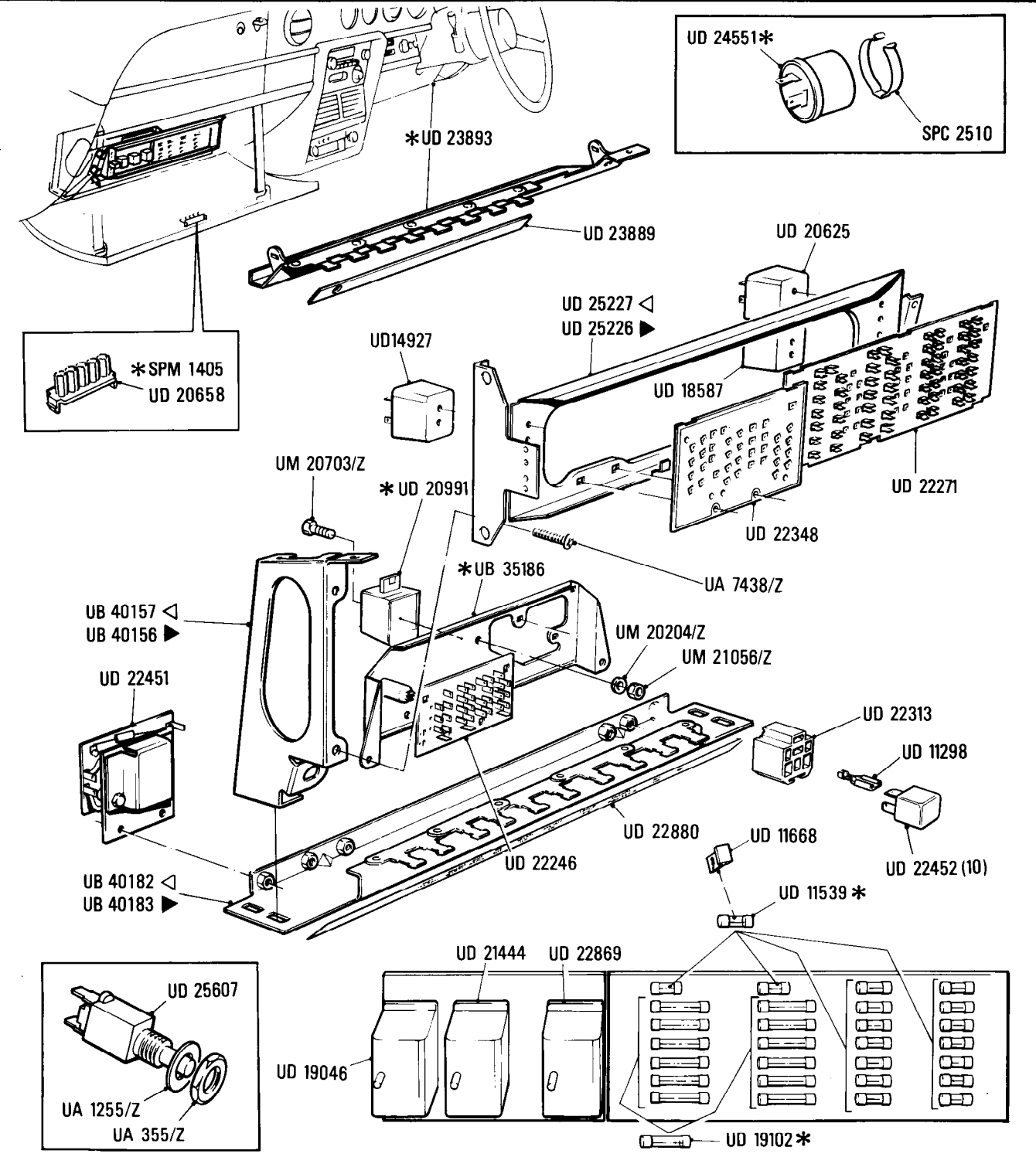
Car serial number

SCAZD0006CCH05037 to 16968

Electrical System
Fuseboard Fittings & relays

Parts marked thus * refer to Additional Information below

◁ Left-hand ▷ Right-hand



Additional Information

- * UD 19431 Direction Indicator other than Italy & France
- * UD 24551 Direction Indicator Italy & France only
- UD 24552 Hazard warning
- * UB 35186
- UD 22906 USA, Japan & Australia
- * UD 20991 USA only
- * UD 19102 20 amp fuse
- * UD 11539 10 amp fuse
- UD 5896 5 amp fuse
- * SPM 1405 Spacer, 10 amp fuse

- * UD 23858 Other than USA
- UD 23859 RH cars
- UD 23860 USA
- * UD 23893
- UD 23889 Label in English
- UD 23894
- UD 23886 Label in English

Fuse board
Identification
label
LHD cars
RHD cars

© Rolls-Royce Motor Cars Limited 1987

◁ Left-hand ▷ Right-hand

UD 26549 (13) UD 24383 (13)

UD 24384 (16) UD 26419 (4)

- | | |
|-------------------------------------------------|-----------------------|
| * SPM 1708 Auto fuse connector for 1.5 mm cable | Part of loom assembly |
| UD 26155 Auto fuse connector for 1.5 mm cable | |
| UD 26372 Auto fuse connector for 0.5 mm cable | |

Rolls-Royce
Corniche

**Rolls-Royce
Corniche**

Bentley
Continental

Electrical System

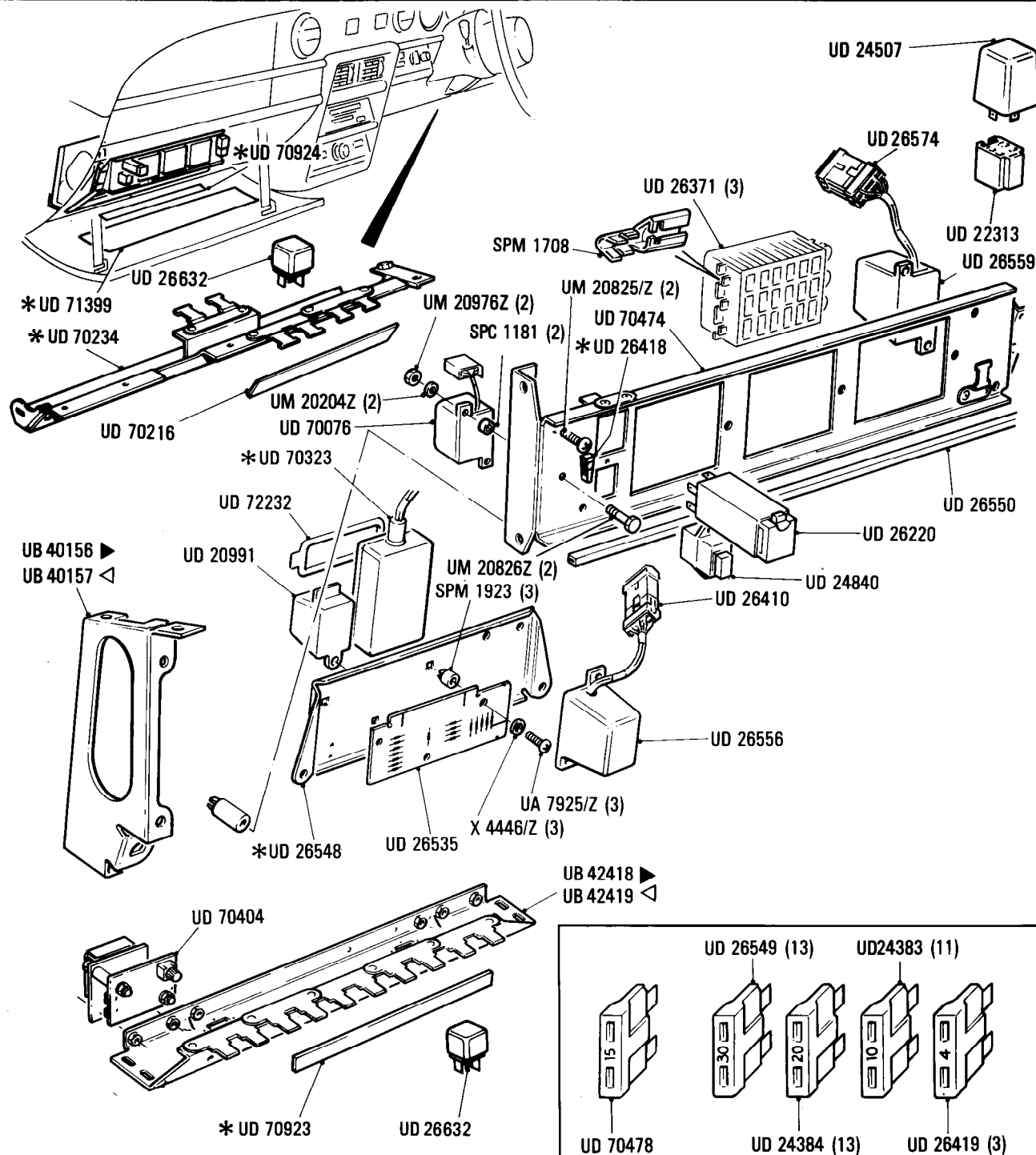
Fuseboard & Fittings

Car serial number

**SCAZD00A7KCH23246, 23247,
to 29290**

Parts marked thus * refer to Additional Information below

◁ **Left-hand** ▷ **Right-hand**



Additional Information

*UD 71399 Fuseboard label (English)
UD 71400 Fuseboard label (French)
*UD 70924 Label relays RHD cars
UD 70923 Label relays LHD cars

© Rolls-Royce Motor Cars Limited 1991

Rolls-Royce	Bentley
Corniche	Corniche
Convertible	Convertible

◀ Left-hand ▶ Right-hand

From VIN number
SCAZD0006CCH05037 to 29290



M4•020•02

Rolls-Royce
Corniche
Convertible

Bentley
Corniche
Convertible

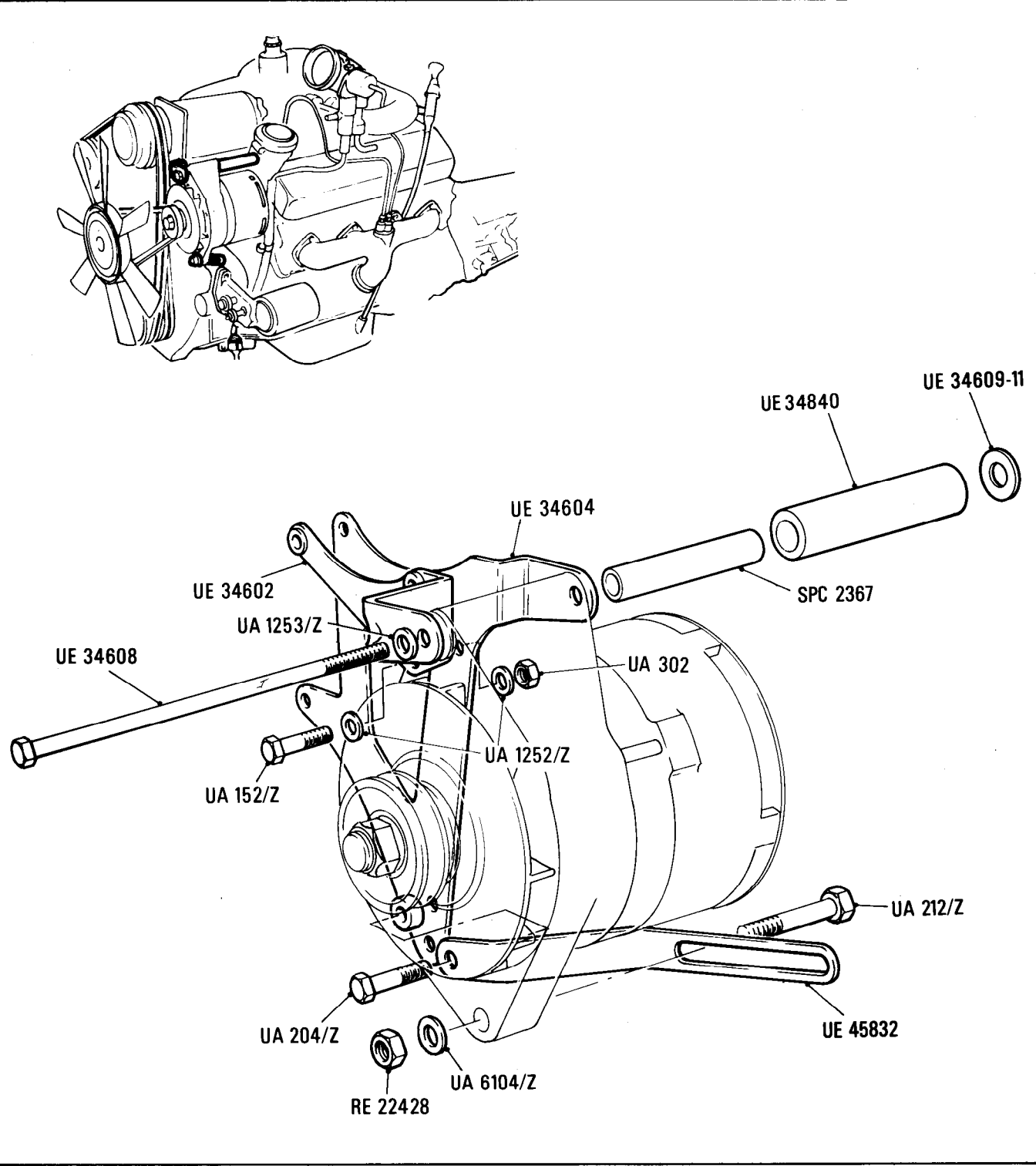
Electrical System
Alternator & Mounting

Car serial number

From VIN number
SCAZD0006CCHO5037 to 29290

Parts marked thus * refer to Additional Information below

◁ Left-hand ▷ Right-hand



Additional Information

© Rolls-Royce Motor Cars Limited 1991

M4·040·02

Rolls-Royce
Corniche
Convertible

Bentley
Corniche
Convertible

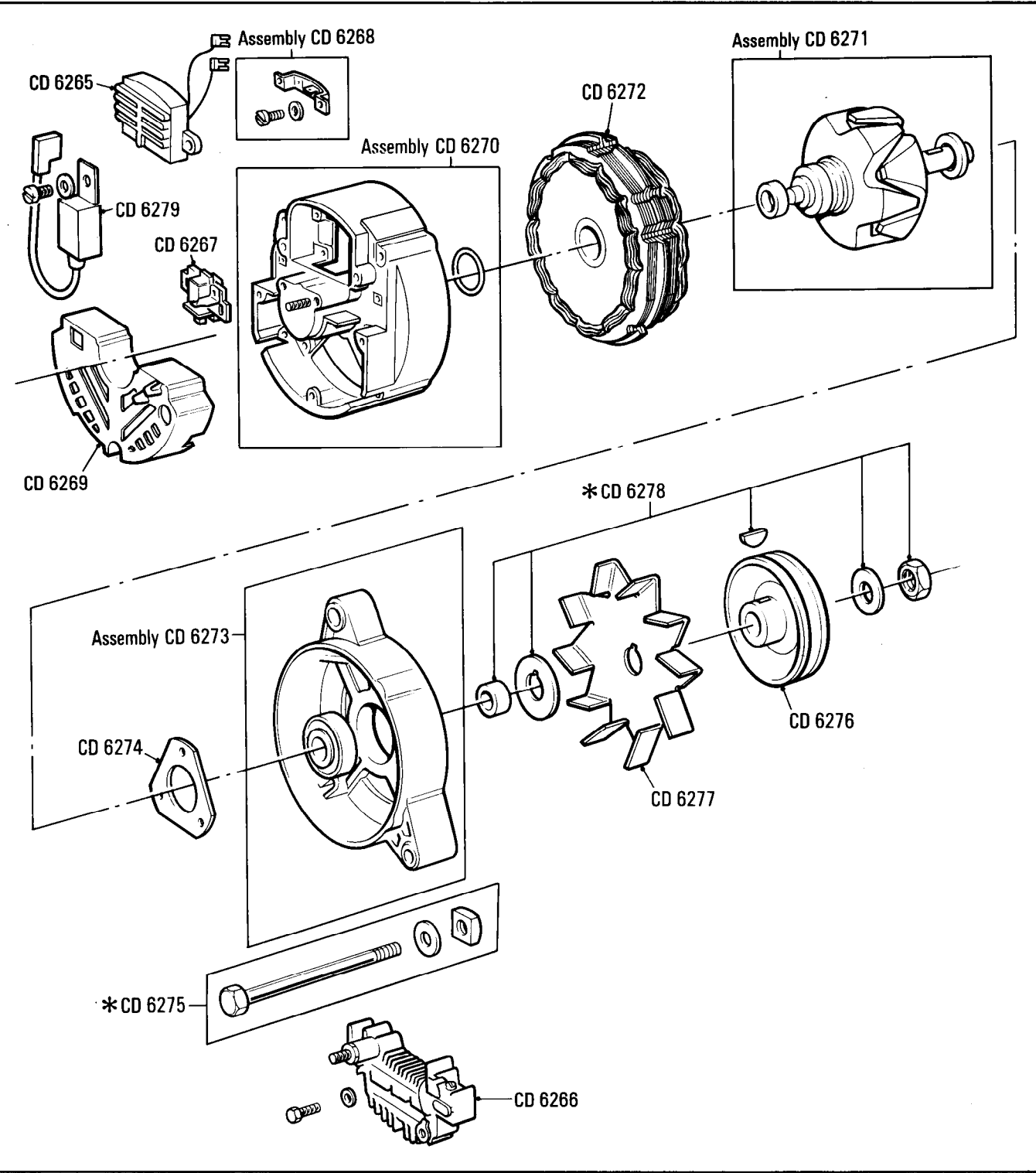
Electrical System
Motorola Alternator UE 45216

Car serial number

SCAZD0006CCH05037 to 29290

Parts marked thus * refer to Additional Information below

◁ Left-hand ▷ Right-hand



Additional Information

© Rolls-Royce Motors Limited 1984

- * CD 6278 Pulley & Fan mounting parts
- * CD 6275 Set of through bolts

M4•060•02

Rolls-Royce
Corniche
Convertible

Bentley
Corniche
Convertible

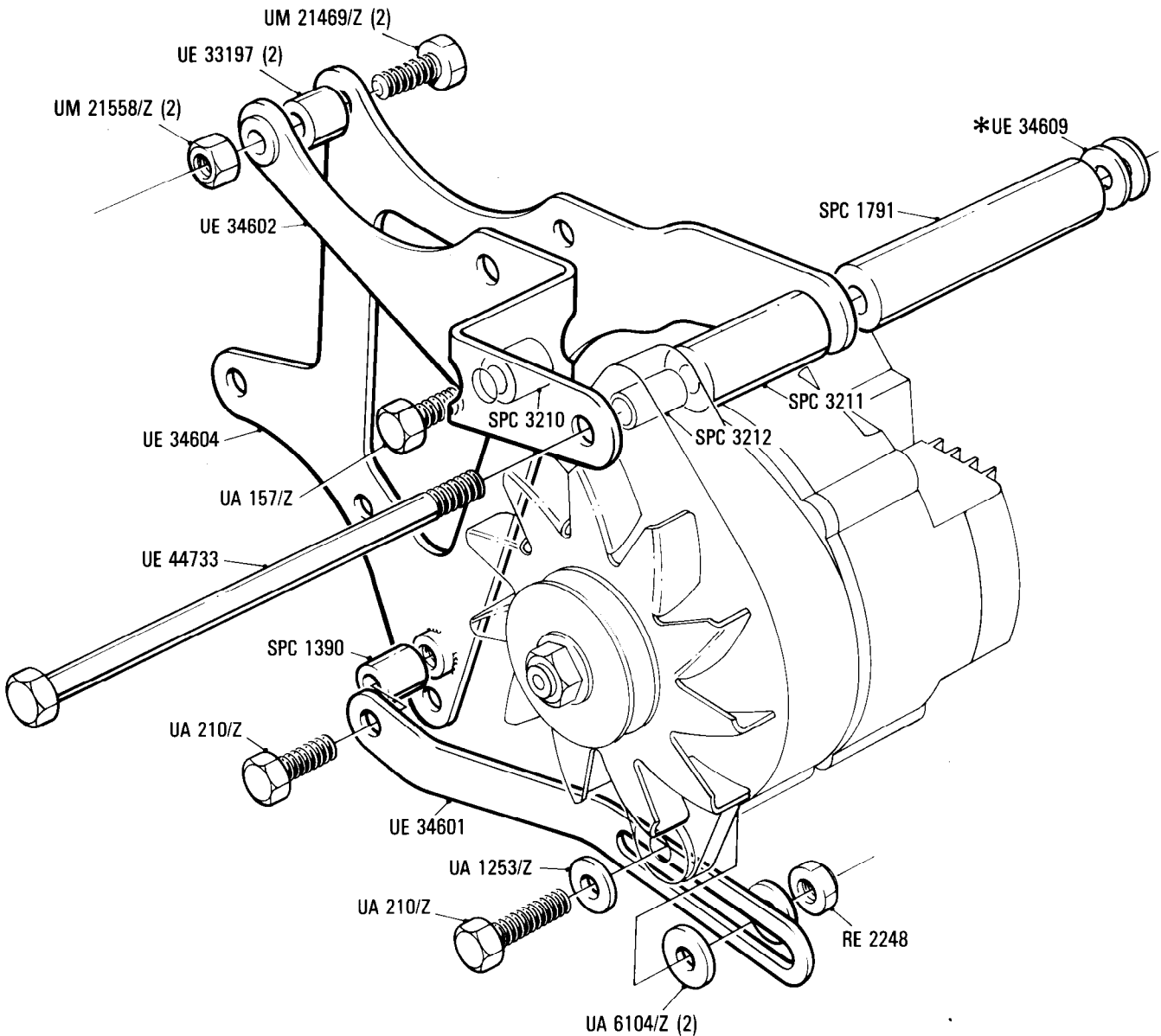
Car serial number

SCAZD0006CCH05037 to 29290

Electrical System
Motorola Alternator Mounting

Parts marked thus * refer to Additional Information below

◁ Left-hand ▷ Right-hand



Additional Information

*UE 34609 Washer .036 thick
UE 34610 Washer .080 thick
UE 34611 Washer .104 thick

© Rolls-Royce Motors Limited 1984

Mc1
•001•01

Rolls-Royce
Corniche
Convertible

Bentley
Corniche
Convertible

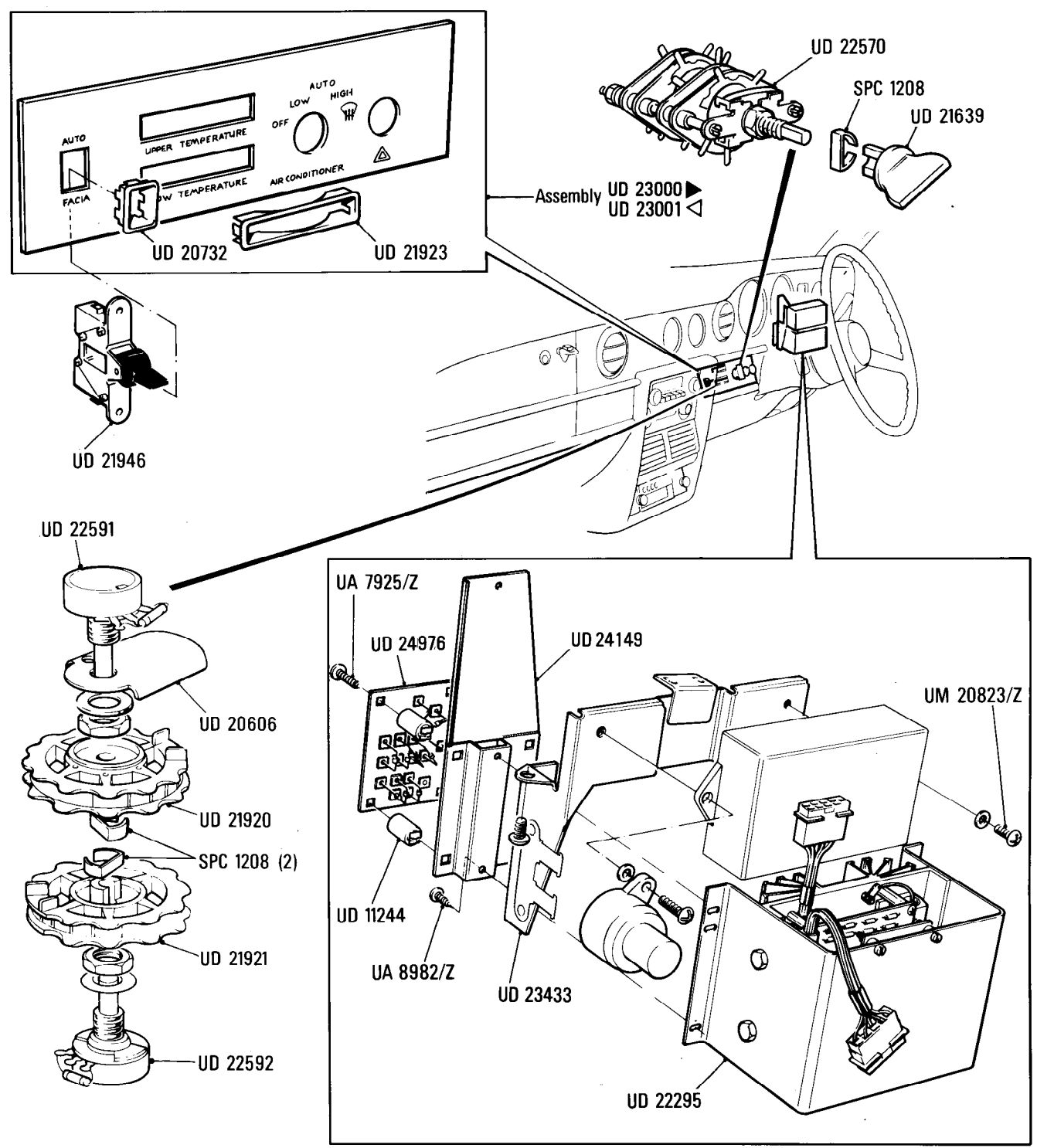
Car serial number

From VIN number
SCAZDOOO6CCHO5037 to 29290

Electrical System
Automatic Air Conditioning Switches, Fan Speed Module & Diode Board

Parts marked thus * refer to Additional Information below

◀ Left-hand ▶ Right-hand



Additional Information

© Rolls-Royce Motors Limited 1984

Mc2
•001•02

Rolls-Royce
Corniche
Bentley
Continental

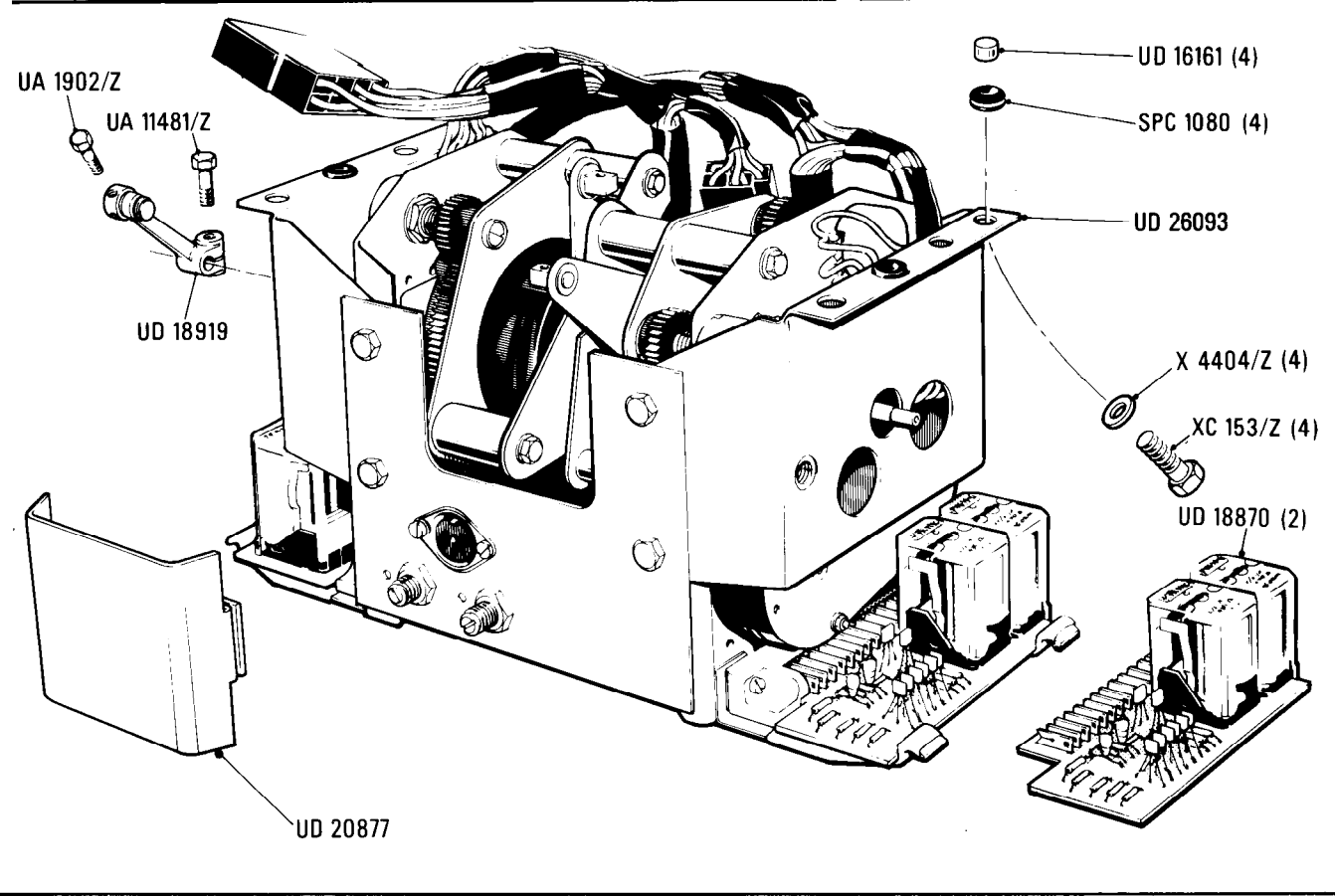
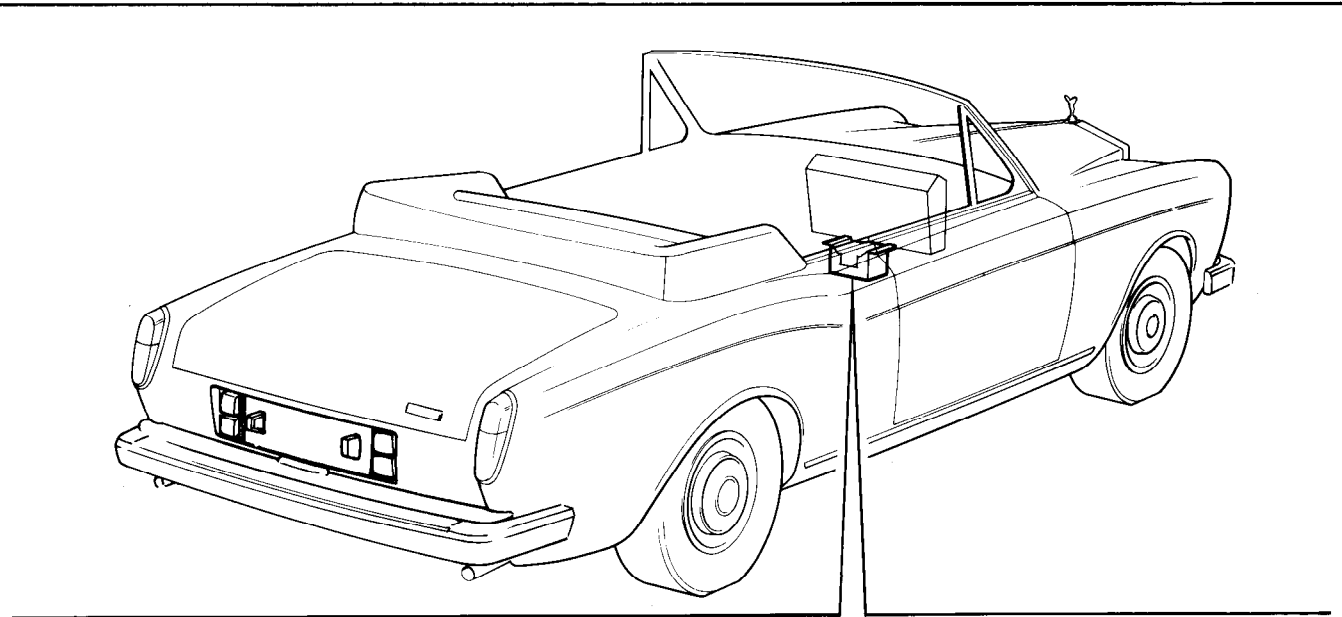
Electrical System
Automatic Air Conditioning Servo Assembly

Car serial number

From VIN number
SCAZD0006CCH05037 to 16968

Parts marked thus * refer to Additional Information below

◁ Left-hand ▷ Right-hand



Additional Information

© Rolls-Royce Motors Limited 1984

Mc2
•002•03

Rolls-Royce
Corniche
Bentley
Continental

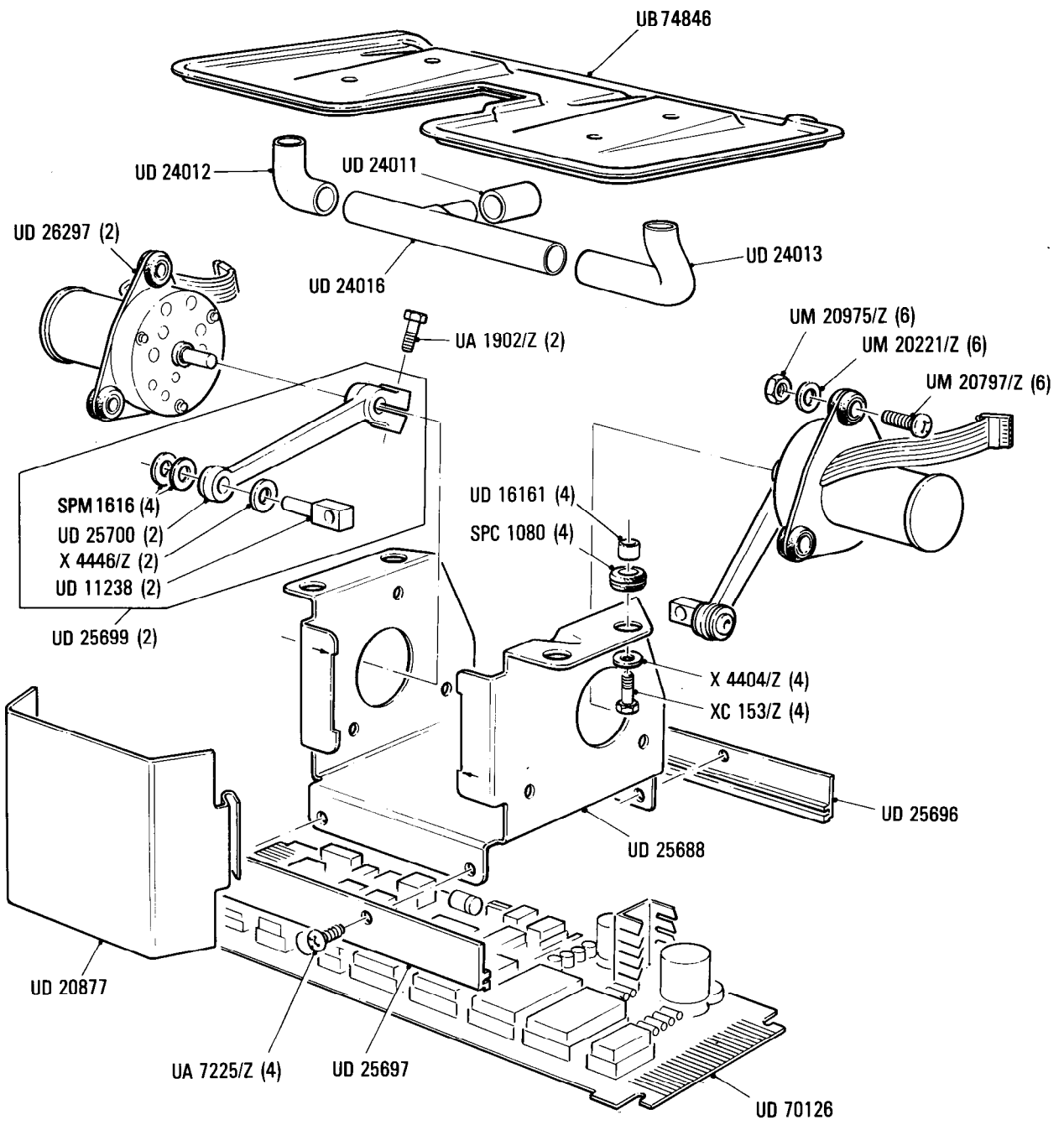
Car serial number

SCAZD02A0HCX20010 to 29290

Electrical System
Electronic Control Unit Servo

Parts marked thus * refer to Additional Information below

◀ Left-hand ▶ Right-hand



Additional Information

© Rolls-Royce Motor Cars Limited 1991

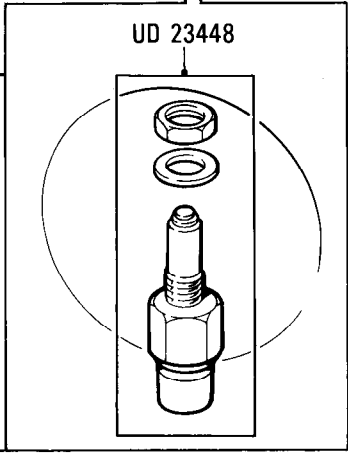
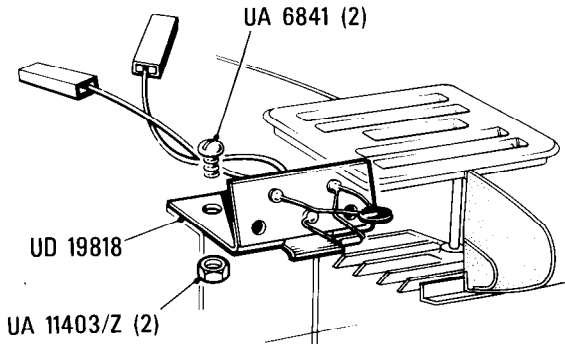
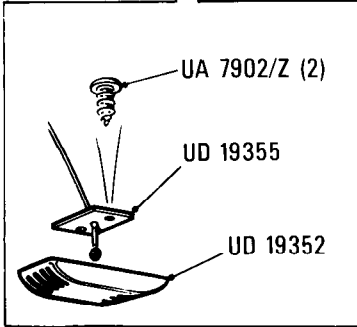
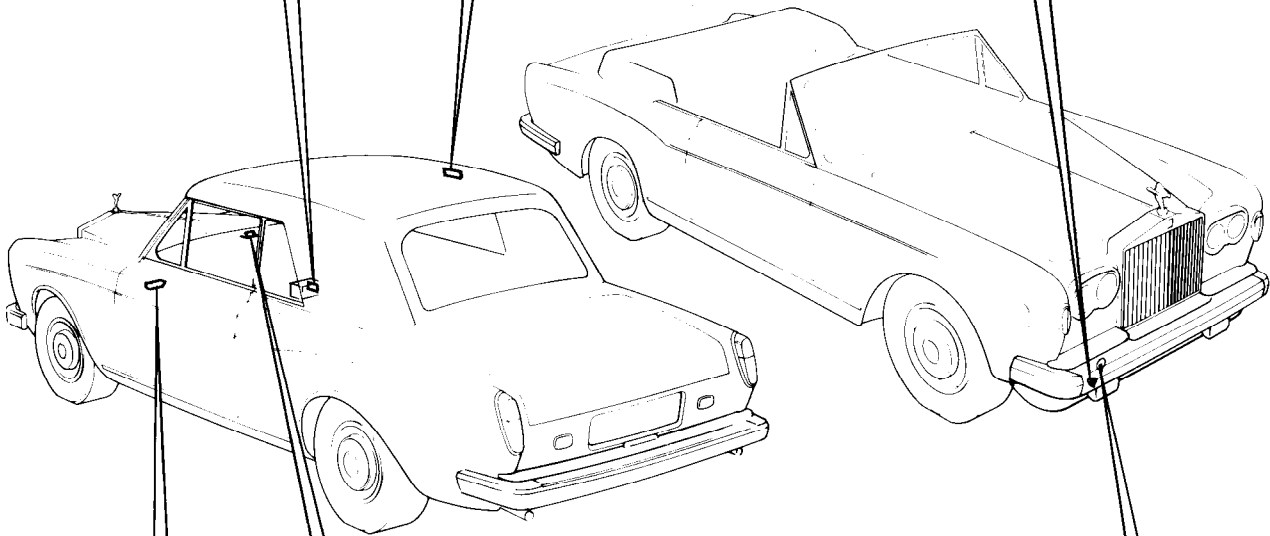
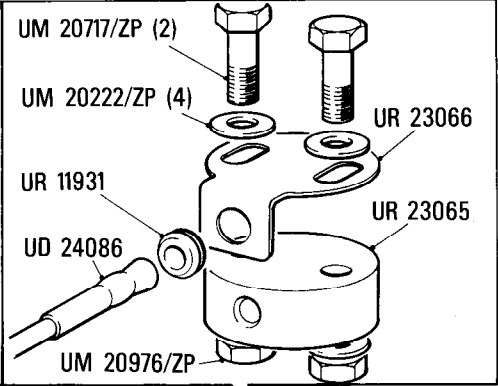
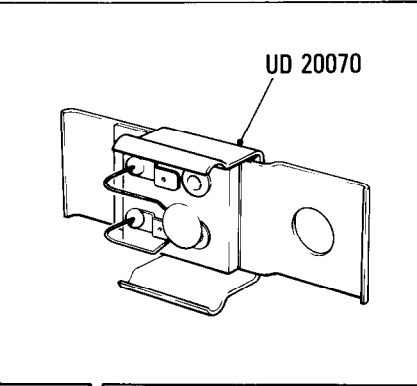
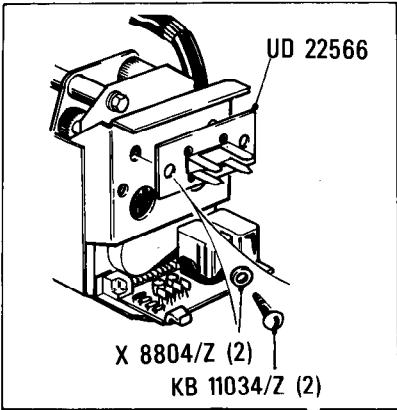
Electrical System
Air Temperature Sensors

Car serial number

From VIN number
SCAZD0006CCHO5037 to 29290

Parts marked thus * refer to Additional Information below

◀ Left-hand ▶ Right-hand



Additional Information

© Rolls-Royce Motors Limited 1984

Me1
•001•01

Rolls-Royce
Rolls-Royce
Corniche

Bentley
Bentley
Continental

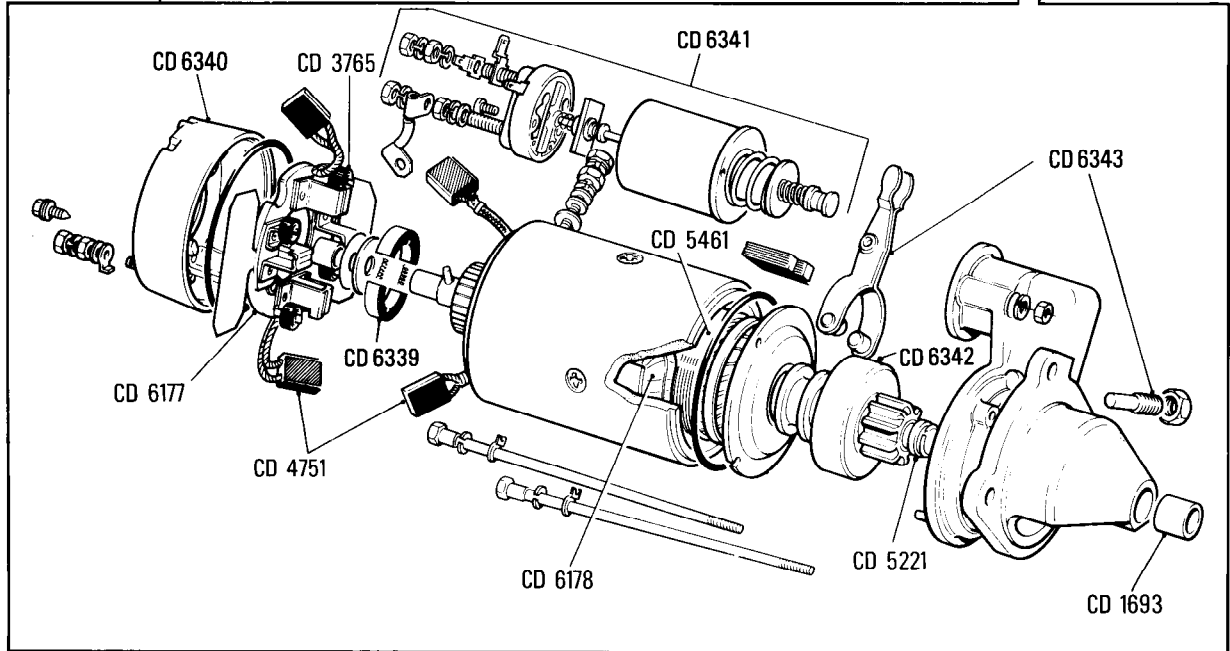
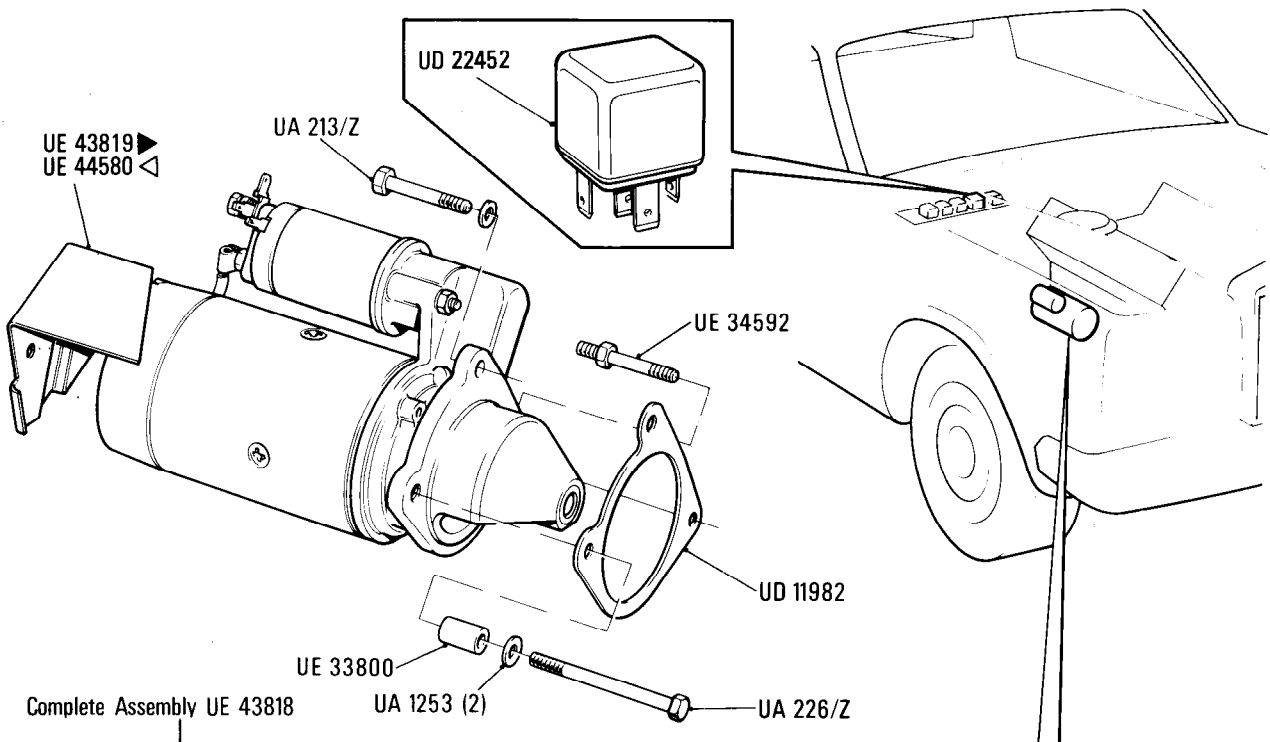
Car serial number

SCAZD42A0BCX03356 to 16968

Electrical System
Starter Motor & Relay

Parts marked thus * refer to Additional Information below

◁ Left-hand ▷ Right-hand



Additional Information

© Rolls-Royce Motors Limited 1984

Me1
•002•01

Rolls-Royce
Corniche
Bentley
Continental

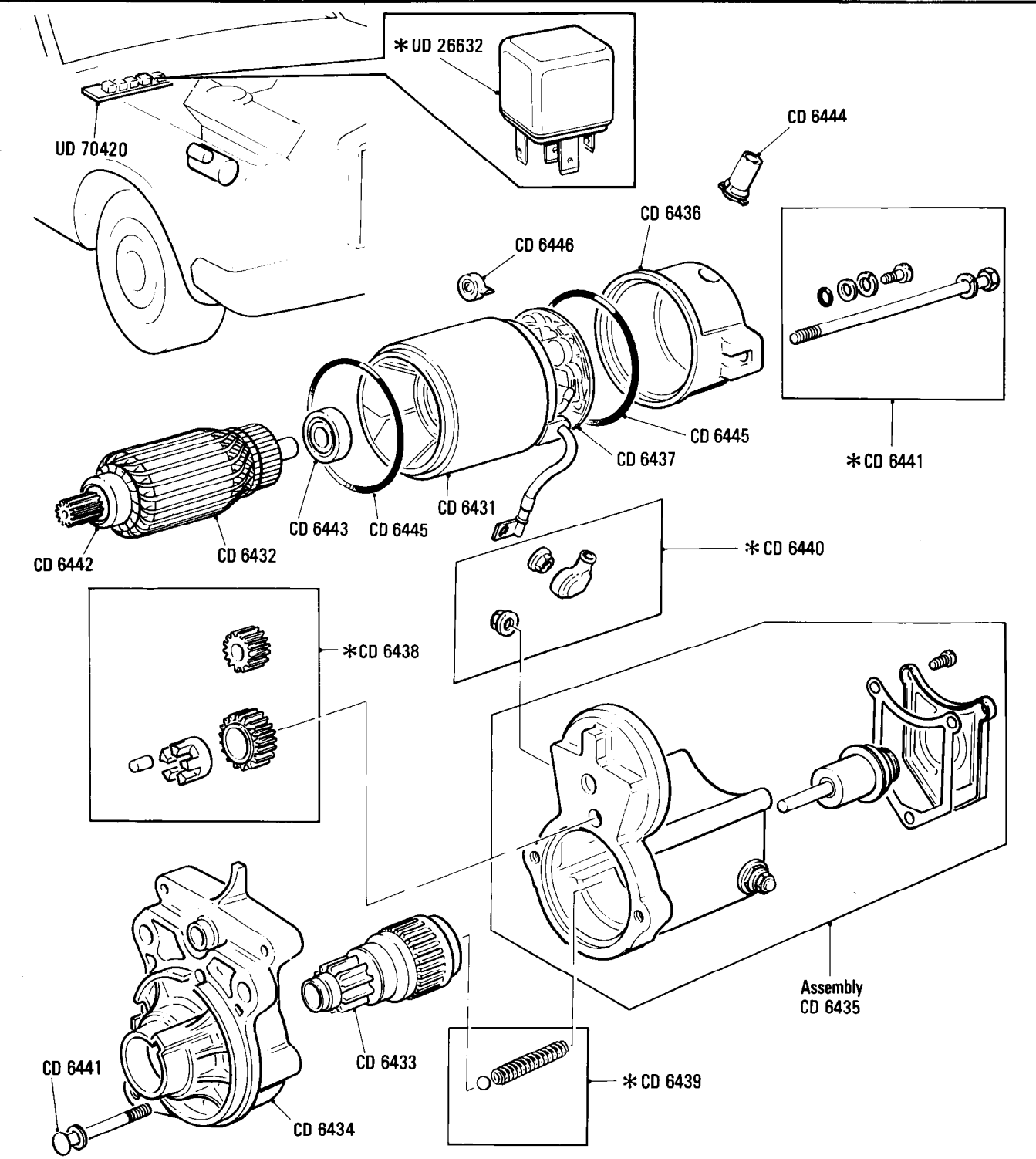
Electrical System
Starter Motor, Relays and Mounting Bracket
(Starter Motor Assembly UE 46348)

Car serial number

SCAZD02A0HCX20010 to 24637

Parts marked thus * refer to Additional Information below

◀ Left-hand ▶ Right-hand



Additional Information

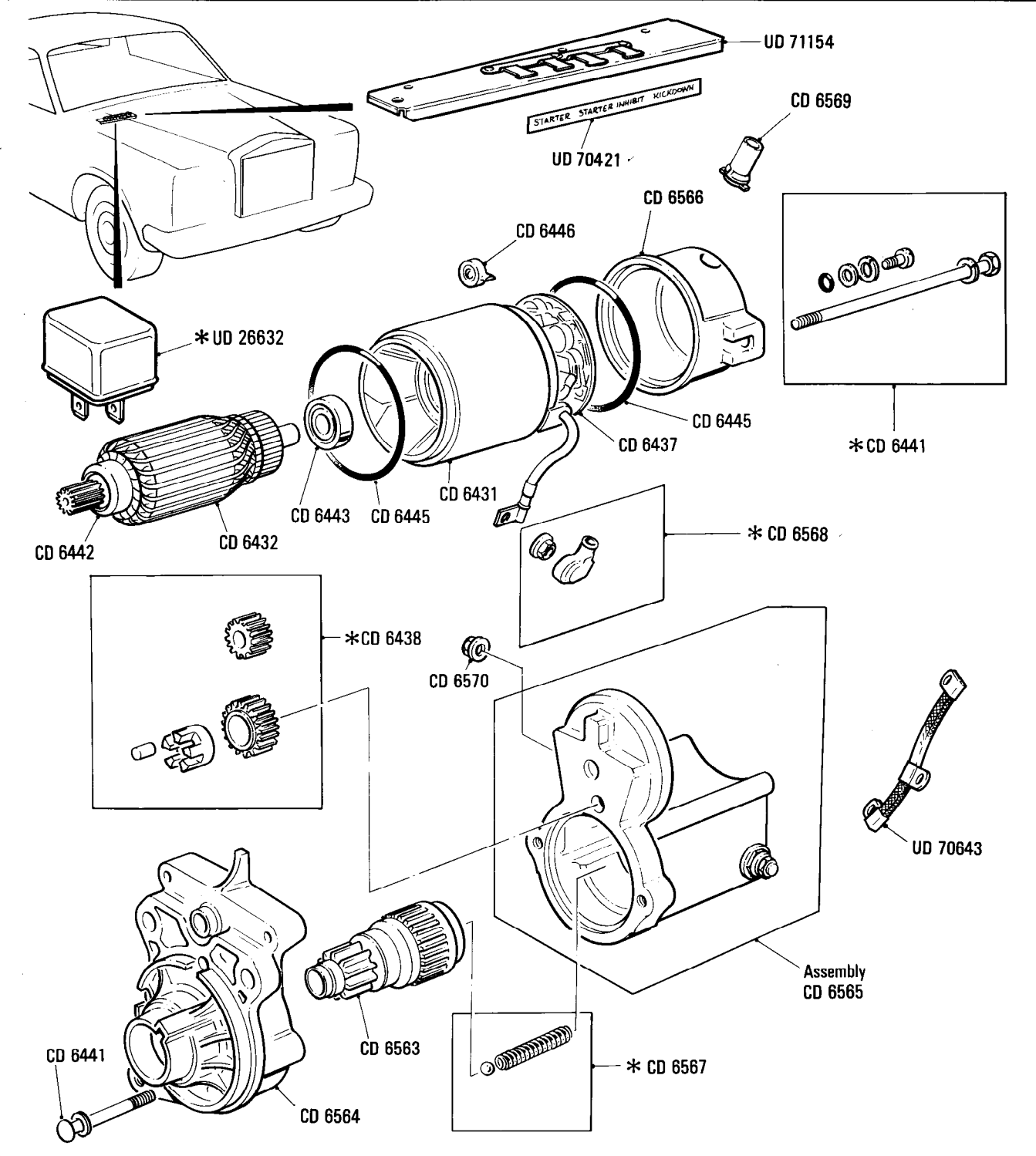
© Rolls-Royce Motor Cars Limited 1987

- * CD 6438 Kit
- * CD 6439 Kit
- * CD 6440 Kit
- * CD 6441 Kit
- * UD 26632 Starter inhibit relay
- UD 26632 Kickdown relay USA cars only
- UD 26632 Starter relay

Electrical System
Starter Motor, Relays and Mounting Bracket
(Starter motor assembly UE 71223)

Car serial number
SCAZD00A7KCH23246, 23247, 24638 to 29290

Parts marked thus * refer to Additional Information below ◀ Left-hand ▶ Right-hand



Additional Information

© Rolls-Royce Motor Cars Limited 1987

- * CD 6438 Kit
- * CD 6441 Kit
- * CD 6567 Kit
- * CD 6568 Kit
- * UD 26632 Starter relay
- UD 26632 Starter inhibit relay
- UD 26632 Kickdown relay, N. America, Japan & Australia

Me2
•001•00

Rolls-Royce
Corniche
Bentley
Continental

Car serial number

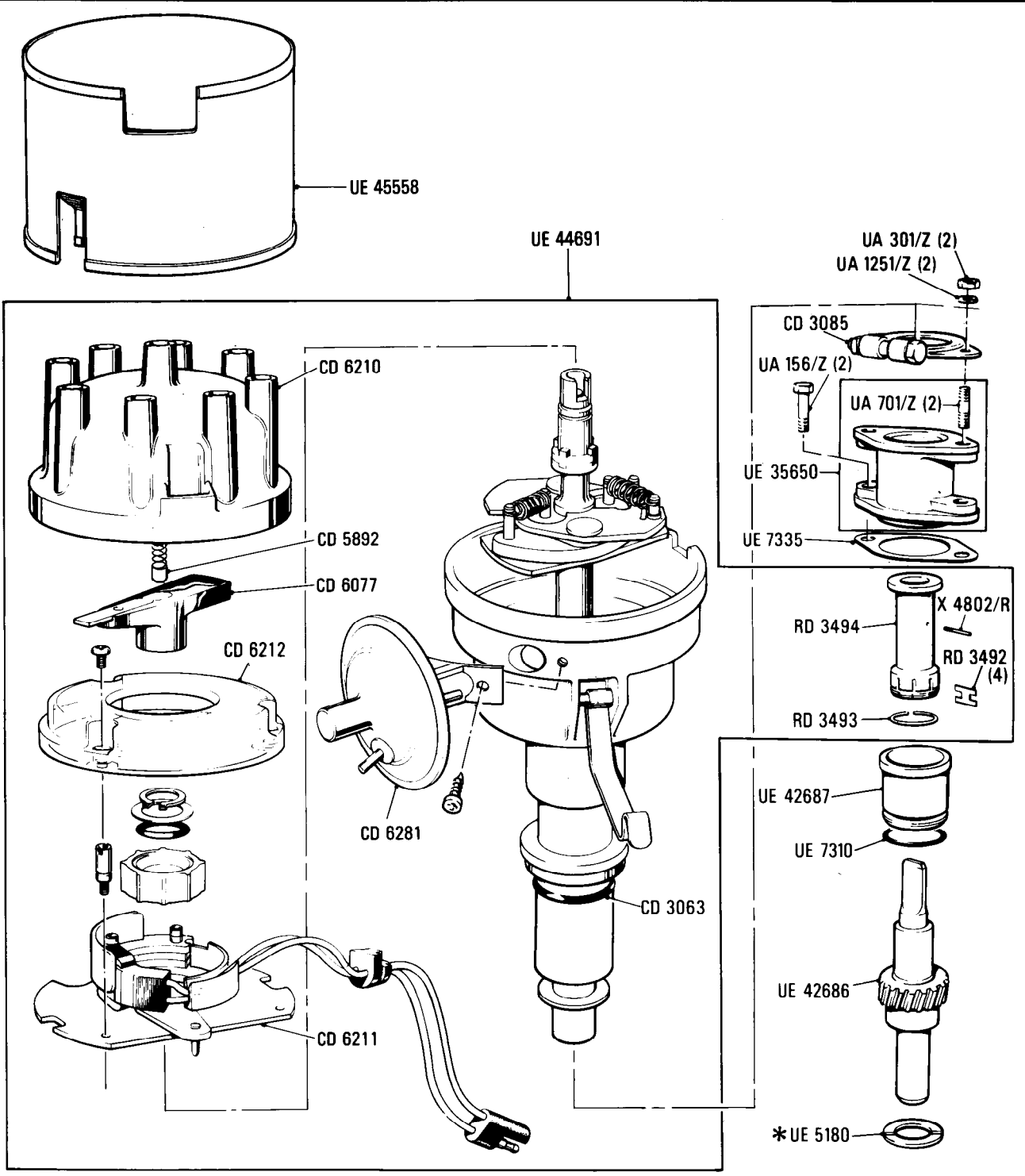
SCAZD0006CCH05037 to 16968

Australia Cars
SCAZD0006CCH05037 to 13342

Electrical System
Ignition Distributor
Cars for countries other than N. America, Japan & Middle East

Parts marked thus * refer to Additional Information below

◁ Left-hand ▷ Right-hand



Additional Information

* UE 5180 } Alternatives
UE 6301 }

© Rolls-Royce Motor Cars Limited 1987

Car serial number

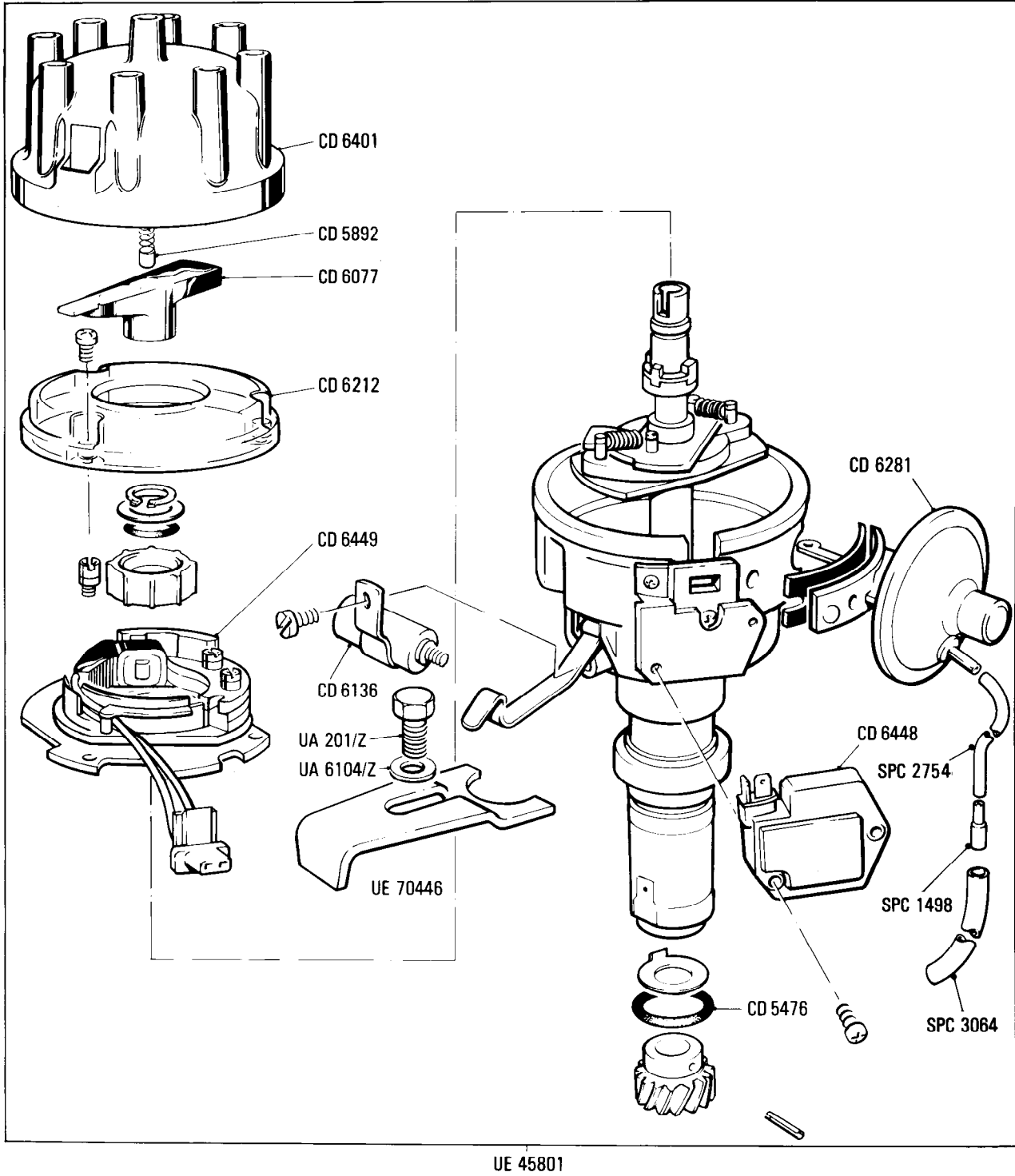
SCAZD0000HCX20010 to 29290
Cars for countries other than
N. America, Japan & Australia

SCAZD0000HCX20010 to 21731
Cars for Switzerland & Austria

Electrical System
Ignition Distributor
Cars for countries other than N. America, Japan & Australia

Parts marked thus * refer to Additional Information below

◁ Left-hand ▷ Right-hand



Additional Information

Me2
•020•00

Rolls-Royce
Corniche
Bentley
Continental

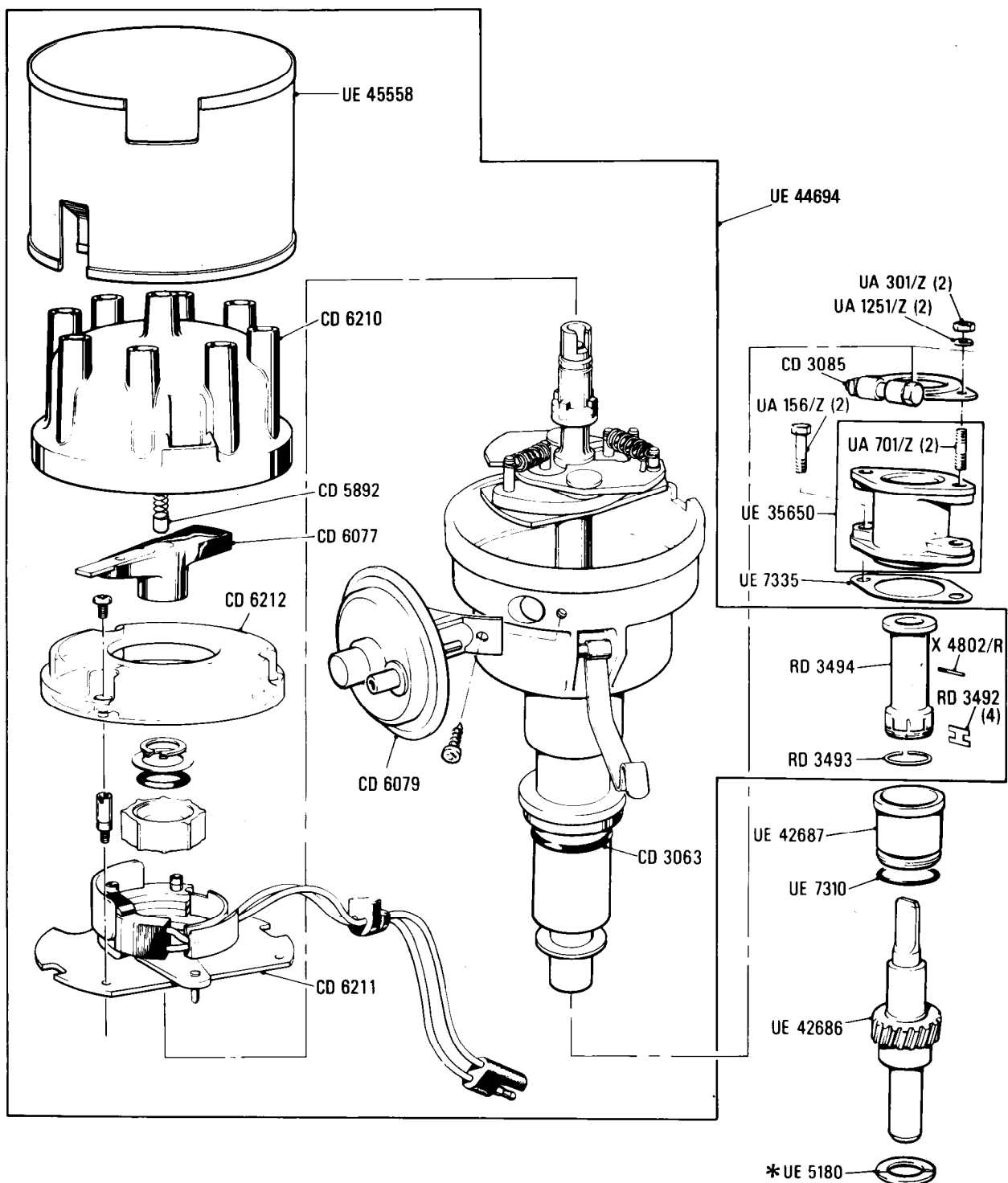
Electrical System
Ignition Distributor
Cars for N. America & Japan

Car serial number

SCAZD42A0BCX05037 to 16988

Parts marked thus * refer to Additional Information below

◁ Left-hand ▷ Right-hand



Additional Information

© Rolls-Royce Motor Cars Limited 1987

* UE 5180 } Alternatives
UE 6301 }

Me2
•021•02

Rolls-Royce
Corniche
Bentley
Continental

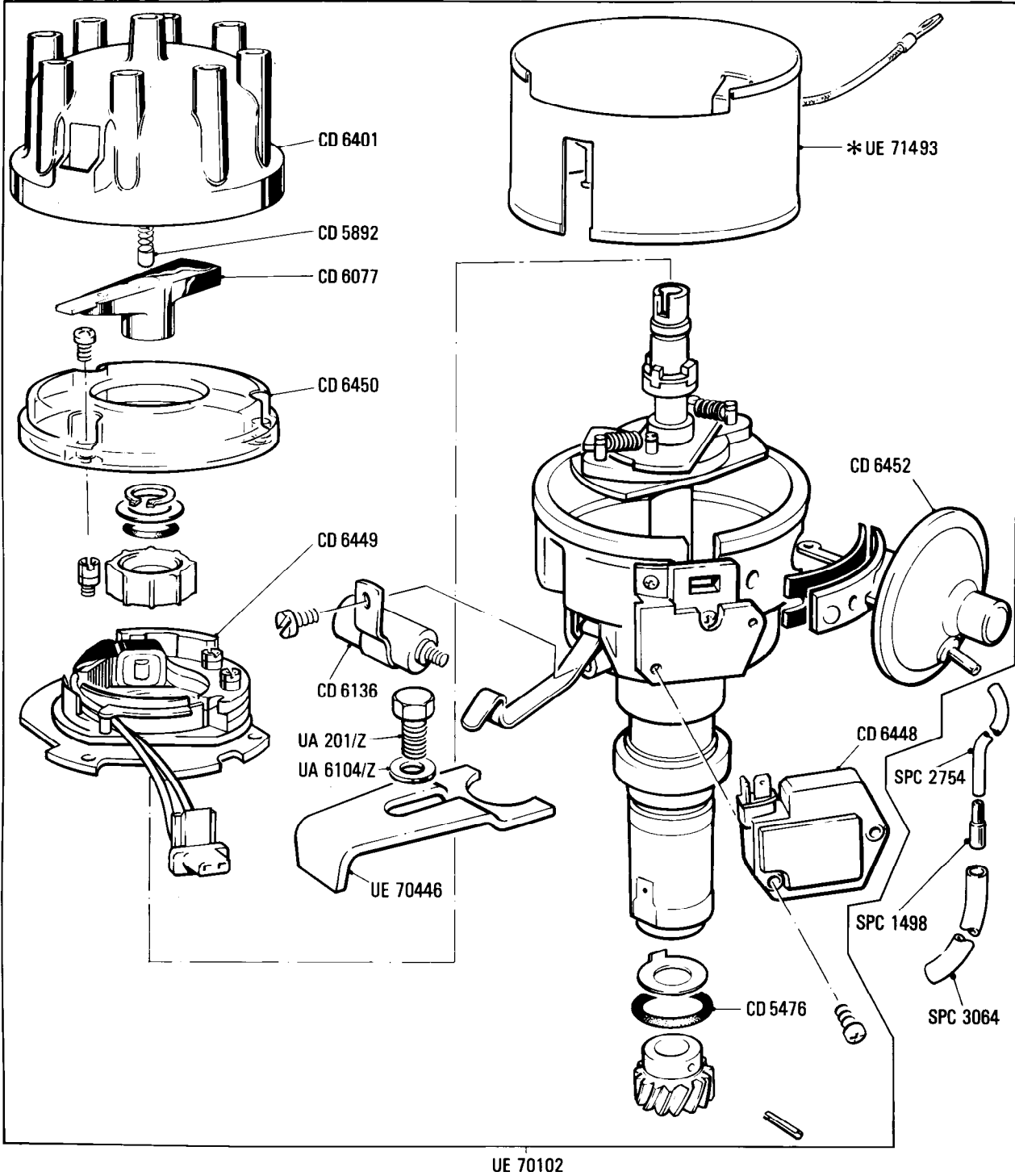
Electrical System
Ignition Distributor
Cars for N. America, Japan, Australia, Switzerland & Austria

Car serial number

SCAZD42A6HCX20011, 20238 to 29290
Cars for N. America, Japan & Australia

SCAZD02A7JCX21733 to 29290
Cars for Switzerland & Austria

Parts marked thus * refer to Additional Information below ◀ Left-hand ▶ Right-hand



Additional Information

*UE 71493 Not required on Australian cars

© Rolls-Royce Motor Cars Limited 1990

Me2
•040•00

Rolls-Royce
Corniche
Bentley
Continental

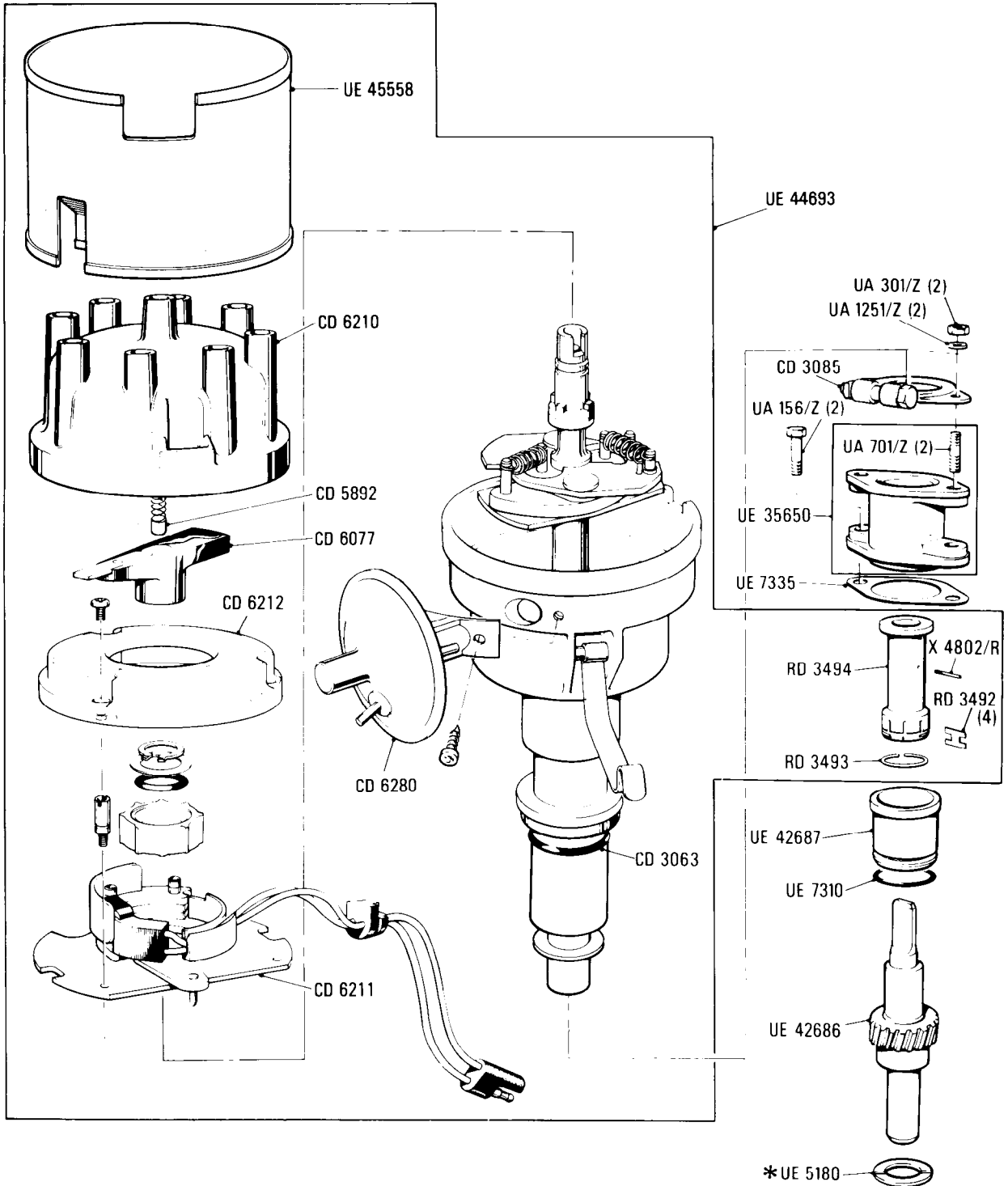
Electrical System
Ignition Distributor
Cars for Middle East

Car serial number

SCAZD0008CCH05037 to 16968

Parts marked thus * refer to Additional Information below

◀ Left-hand ▶ Right-hand



Additional Information

* UE 5180 } Alternatives
UE 6301 }

© Rolls-Royce Motor Cars Limited 1987

Me2
•060•00

Rolls-Royce
Corniche
Bentley
Continental

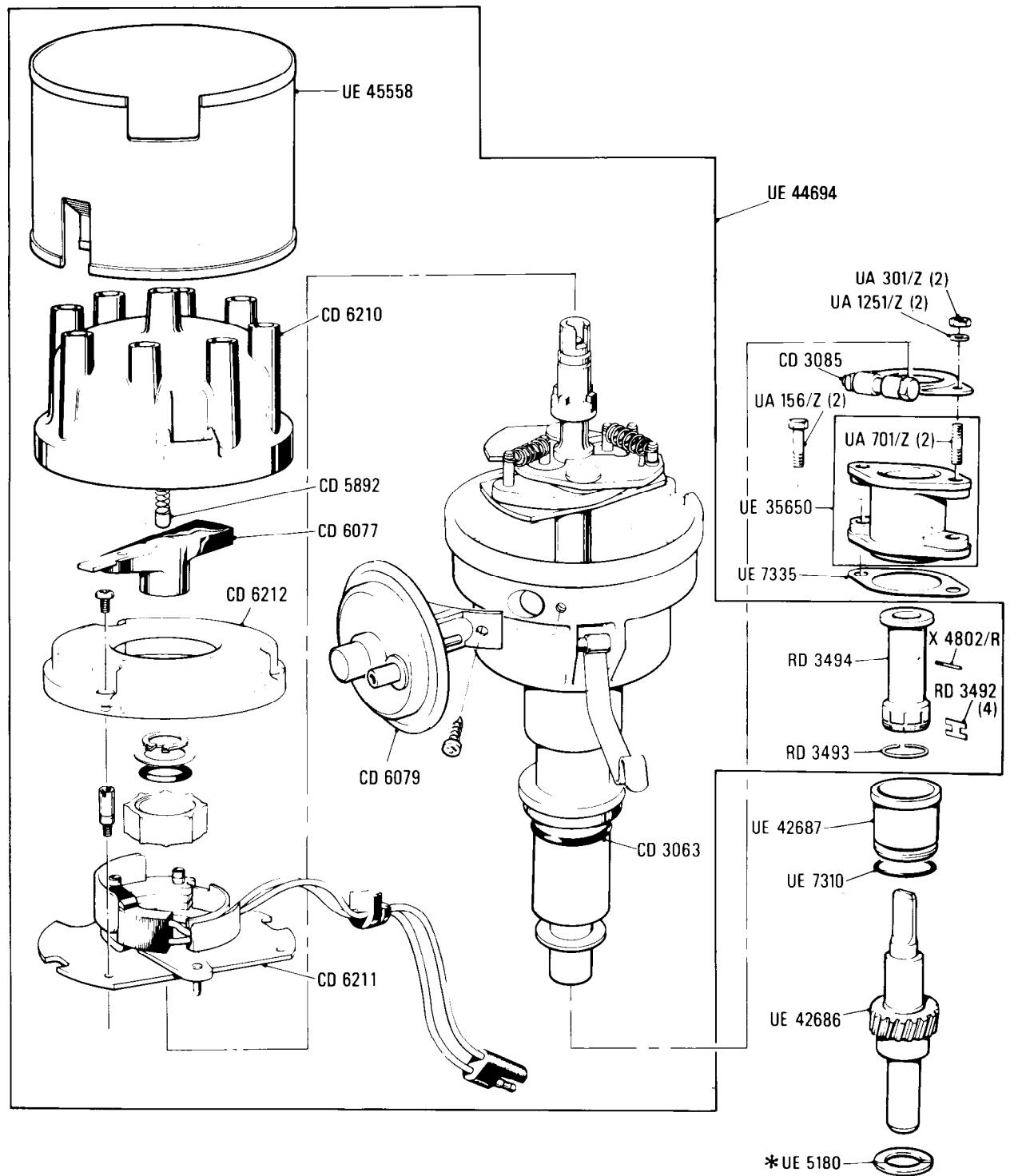
Electrical System
Ignition Distributor
Cars for Australia

Car serial number

SCAZD42A9GCX13343 to 16968

Parts marked thus * refer to Additional Information below

◁ Left-hand ▷ Right-hand



Additional Information

© Rolls-Royce Motor Cars Limited 1987

* UE 5180 } Alternatives
UE 6301 }

Me3
•001•03

Rolls-Royce
Corniche
Bentley
Continental

Car serial number

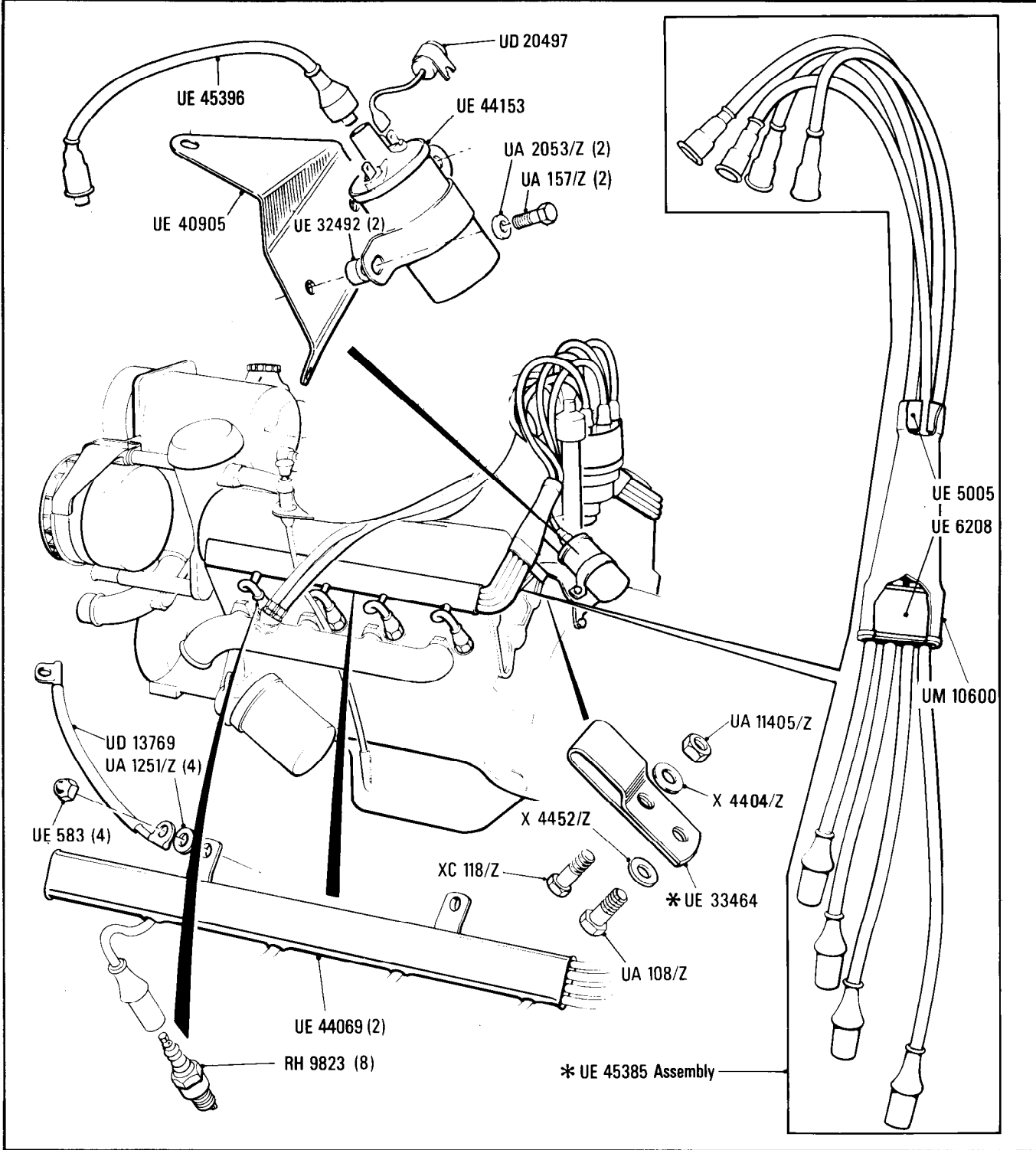
SCAZD0006CCH05037 to 16968

Electrical System

Ignition Coil, Ignition Leads & Sparking Plugs
Cars for countries other than N. America, Japan & Australia

Parts marked thus * refer to Additional Information below

◀ Left-hand ▶ Right-hand



Additional Information

* UE 45385 'A' Bank
UE 45386 'B' Bank

© Rolls-Royce Motor Cars Limited 1987

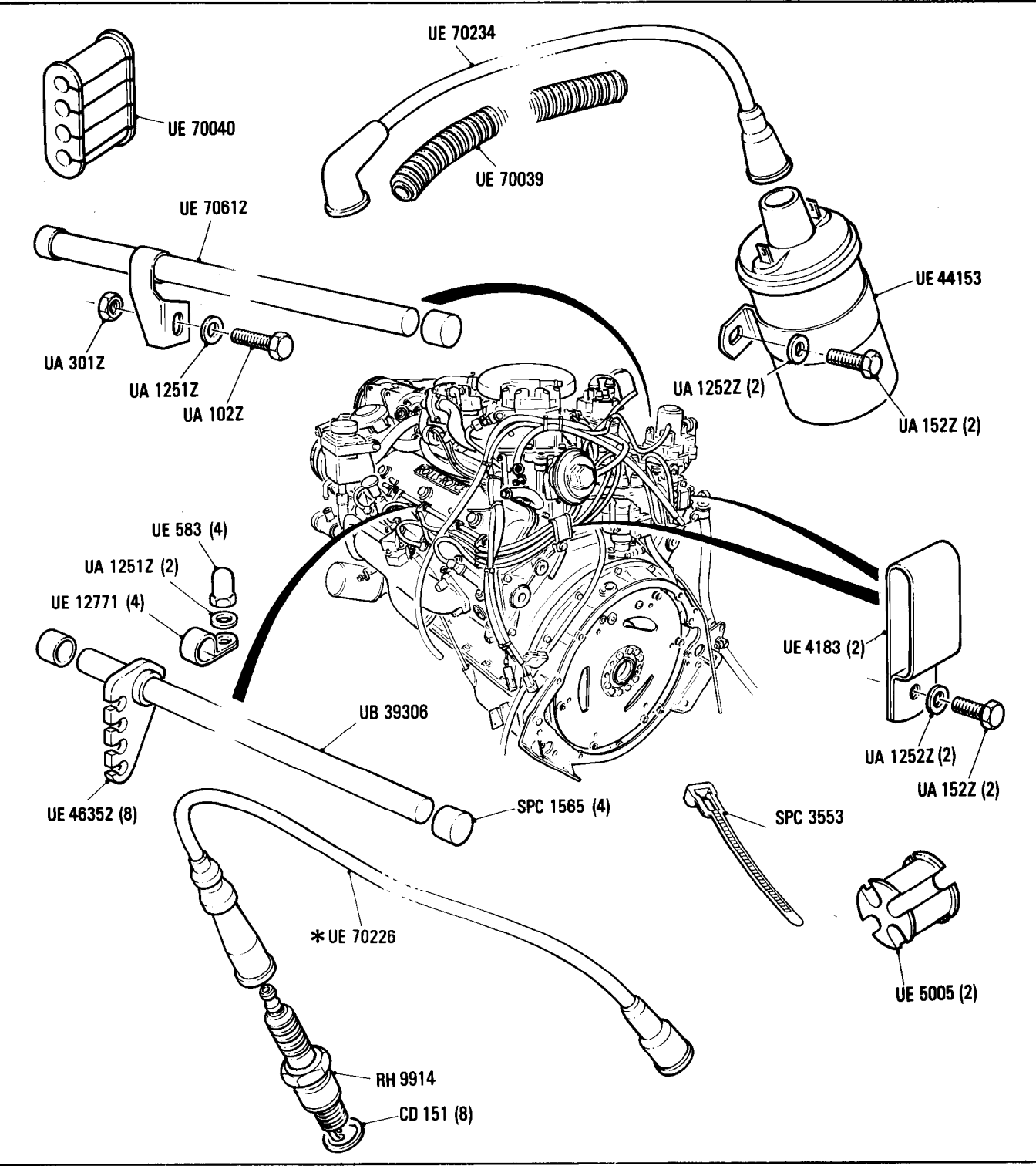
Electrical System
Ignition Coil, Ignition Leads & Sparking Plugs

Car serial number

SCAZD0000HCX20010 to 29290

Parts marked thus * refer to Additional Information below

◀Left-hand ▶Right-hand



Additional Information

© Rolls-Royce Motor Cars Limited 1990

- * UE 70226 A1 Cylinder
- UE 70227 A2 Cylinder
- UE 70228 A3 Cylinder
- UE 70229 A4 Cylinder
- UE 70230 B1 Cylinder
- UE 70231 B2 Cylinder
- UE 70232 B3 Cylinder
- UE 70233 B4 Cylinder

Me3
•020•00

Rolls-Royce
Corniche
Bentley
Continental

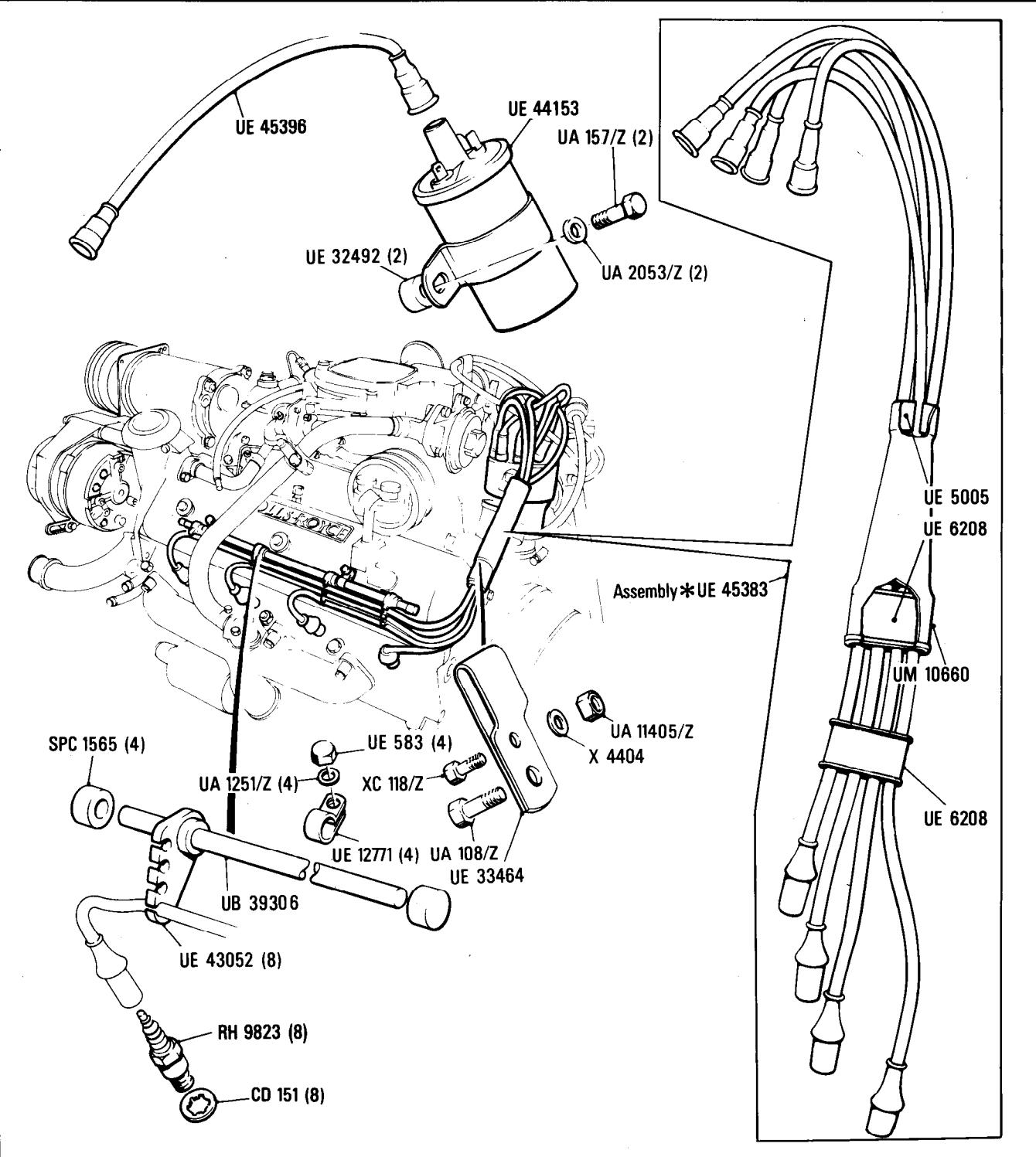
Electrical System
Ignition Coil, Ignition Leads & Sparking Plugs
Cars for N. America & Japan

Car serial number

SCAZD0006CCH05037 to 16968

Parts marked thus * refer to Additional Information below

◁ Left-hand ▷ Right-hand



Additional Information

© Rolls-Royce Motor Cars Limited 1987

* UE 45383 'A' Bank
UE 45384 'B' Bank

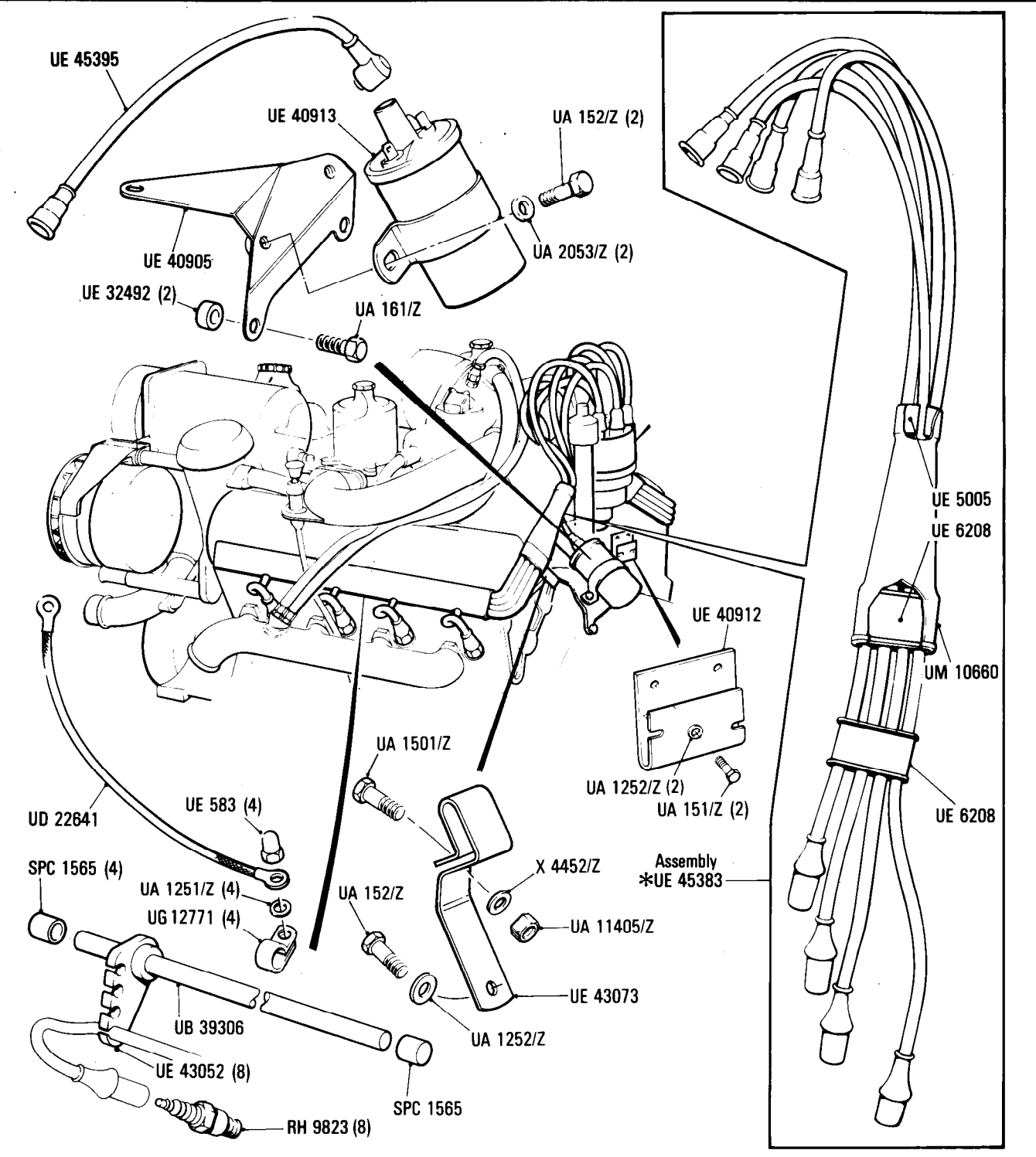
Me3
•040•00

Rolls-Royce
Corniche
Bentley
Continental

Electrical System
Ignition Coil, Ballast Resistor, Ignition Leads & Sparking Plugs
Cars for Australia

Car serial number
SCAZD0008CCH05037 to 13342

Parts marked thus * refer to Additional Information below ◀ Left-hand ▶ Right-hand



Additional Information

* UE 45383 'A' Bank
UE 45384 'B' Bank

© Rolls-Royce Motor Cars Limited 1987

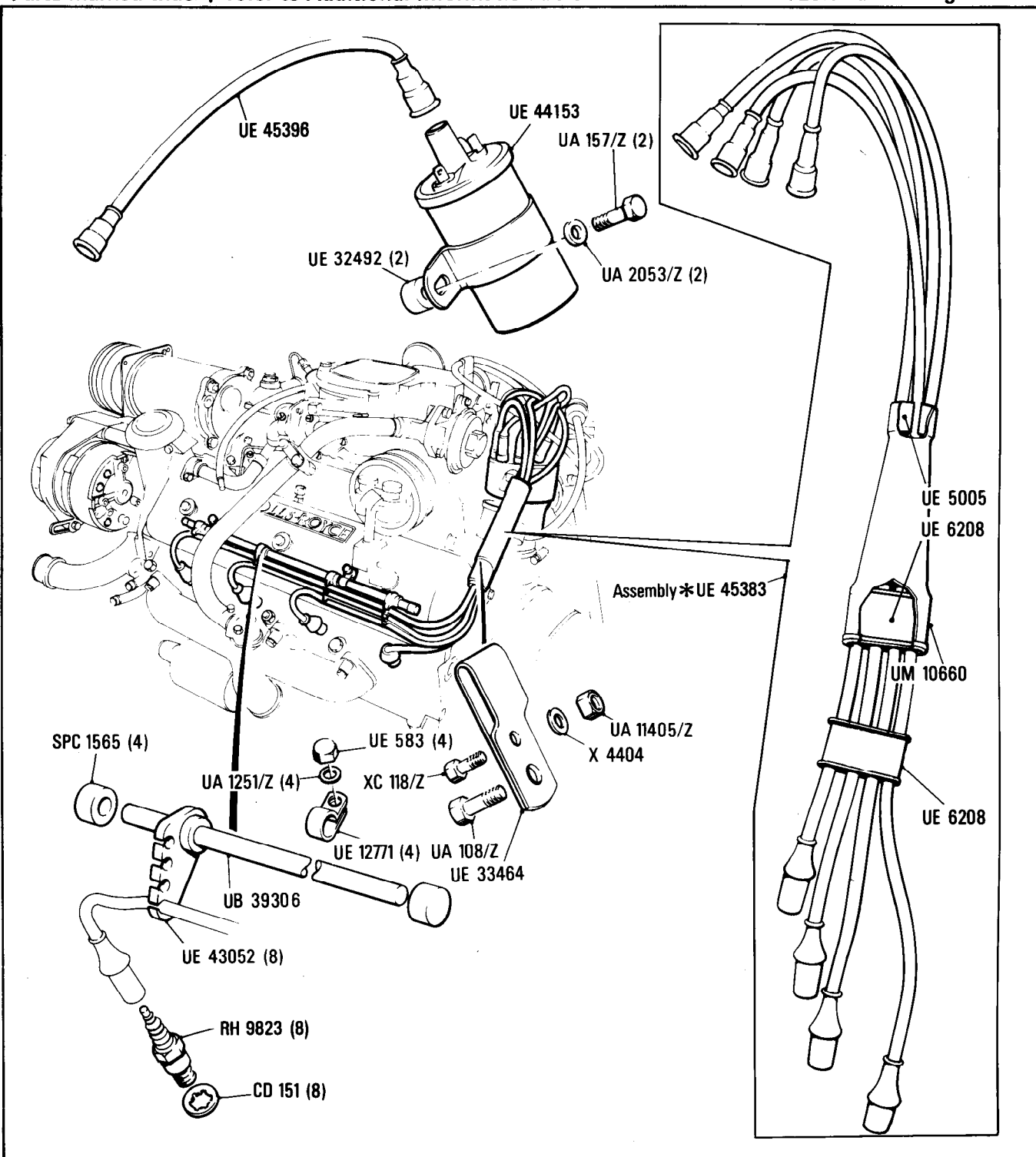
Rolls-Royce
Corniche

Electrical System

Car serial number**SCAZD42A9GCX13343 to 16968**

Parts marked thus * refer to Additional Information below

◁ **Left-hand** ▶ **Right-hand**



Additional Information

* UE 45383 'A' Bank
UE 45384 'B' Bank

© Rolls-Royce Motor Cars Limited 1987

Me6
•001•00

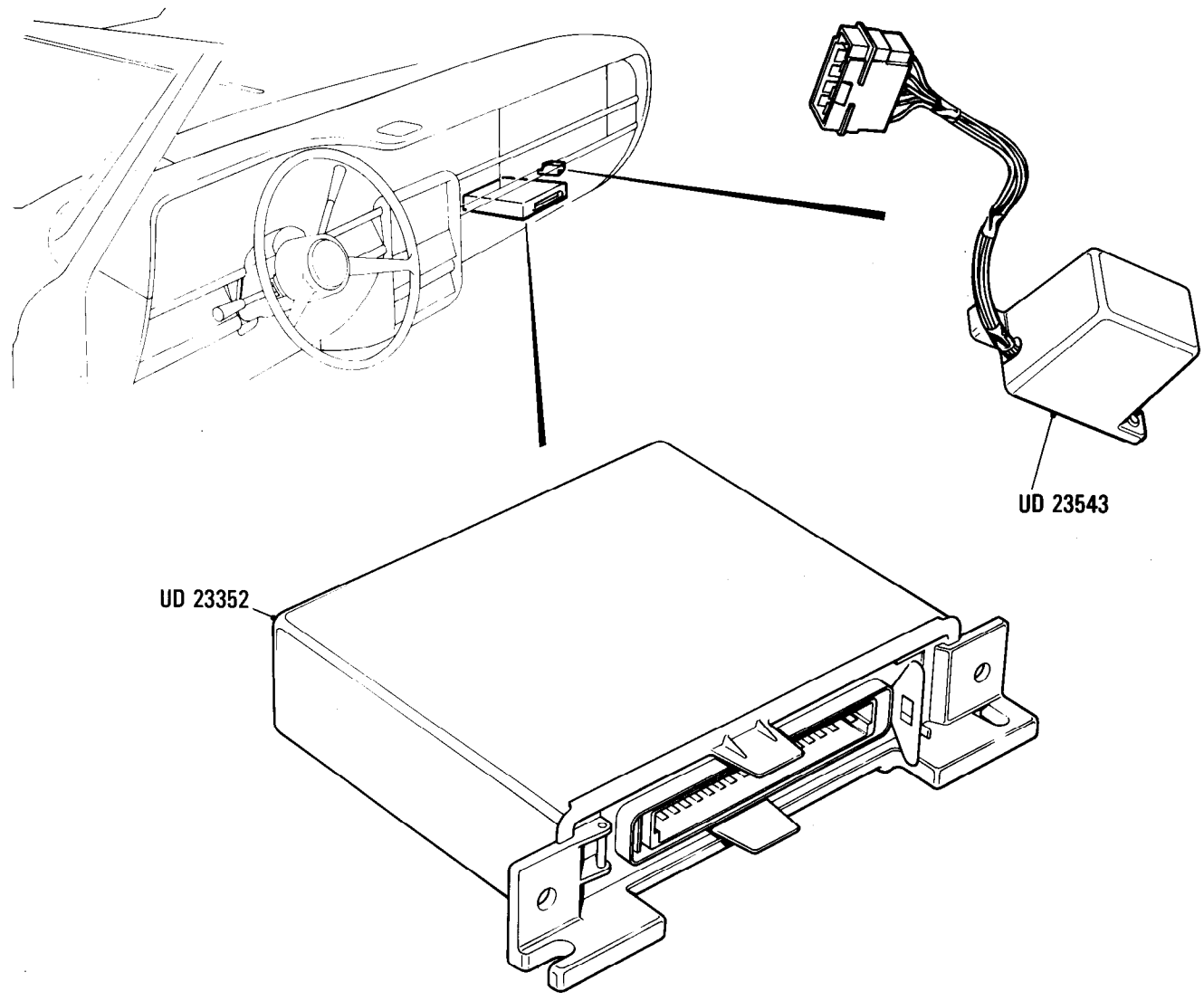
Rolls-Royce
Corniche
Bentley
Continental

Electrical System
Electronic Control Unit Fuel Injection Meter, Engine Run Sensor
Cars for N. America

Car serial number

Cars for N. America
SCAZD42A0BCX01678 to 16968

Parts marked thus * refer to Additional Information below ◀ Left-hand ▶ Right-hand



Additional Information

© Rolls-Royce Motor Cars Limited 1987

Me6
•002•02

Rolls-Royce
Corniche

Bentley
Continental

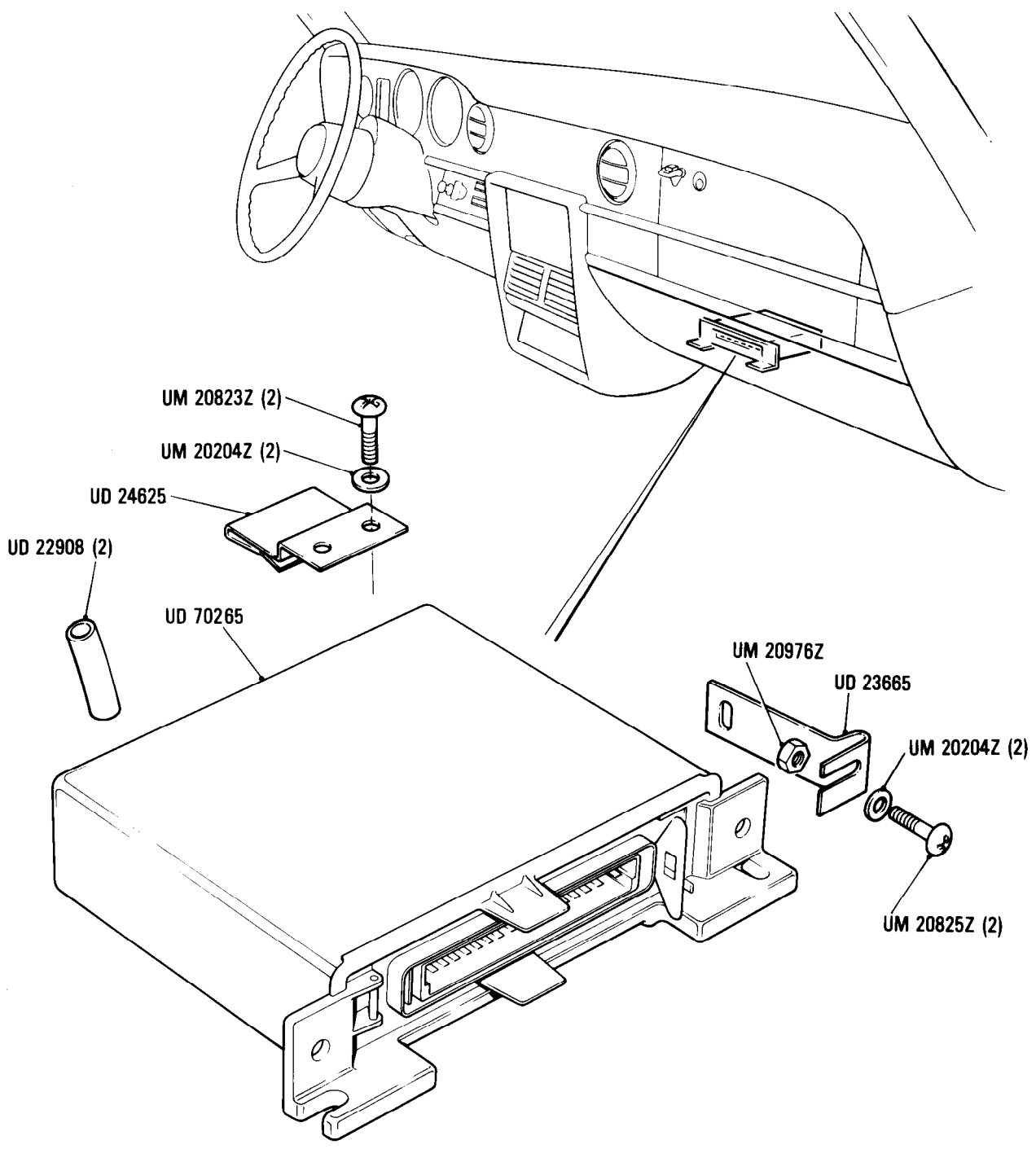
Car serial number

SCAZD0000HCX20010 to 29290

Electrical System
Electronic Control Unit Fuel Injection Meter

Parts marked thus * refer to Additional Information below

◀ Left-hand ▶ Right-hand



Additional Information

© Rolls-Royce Motor Cars Limited 1990