

# TWO-DOOR MOTOR CARS 1980-1989

## Power Assisted Steering Menu

N1	Steering wheel and horn button
N2	Column cowling
N3	Gear selector
N4	Steering column
N5	Input shaft and universal coupling
N6	Rack and pinion steering
N7	Pipes hoses and oil cooler
N8	Track rod and side steering levers
N9	Steering pump
	Pump mounting bracket

N1·001·01

Rolls-Royce  
Corniche

Bentley  
Continental

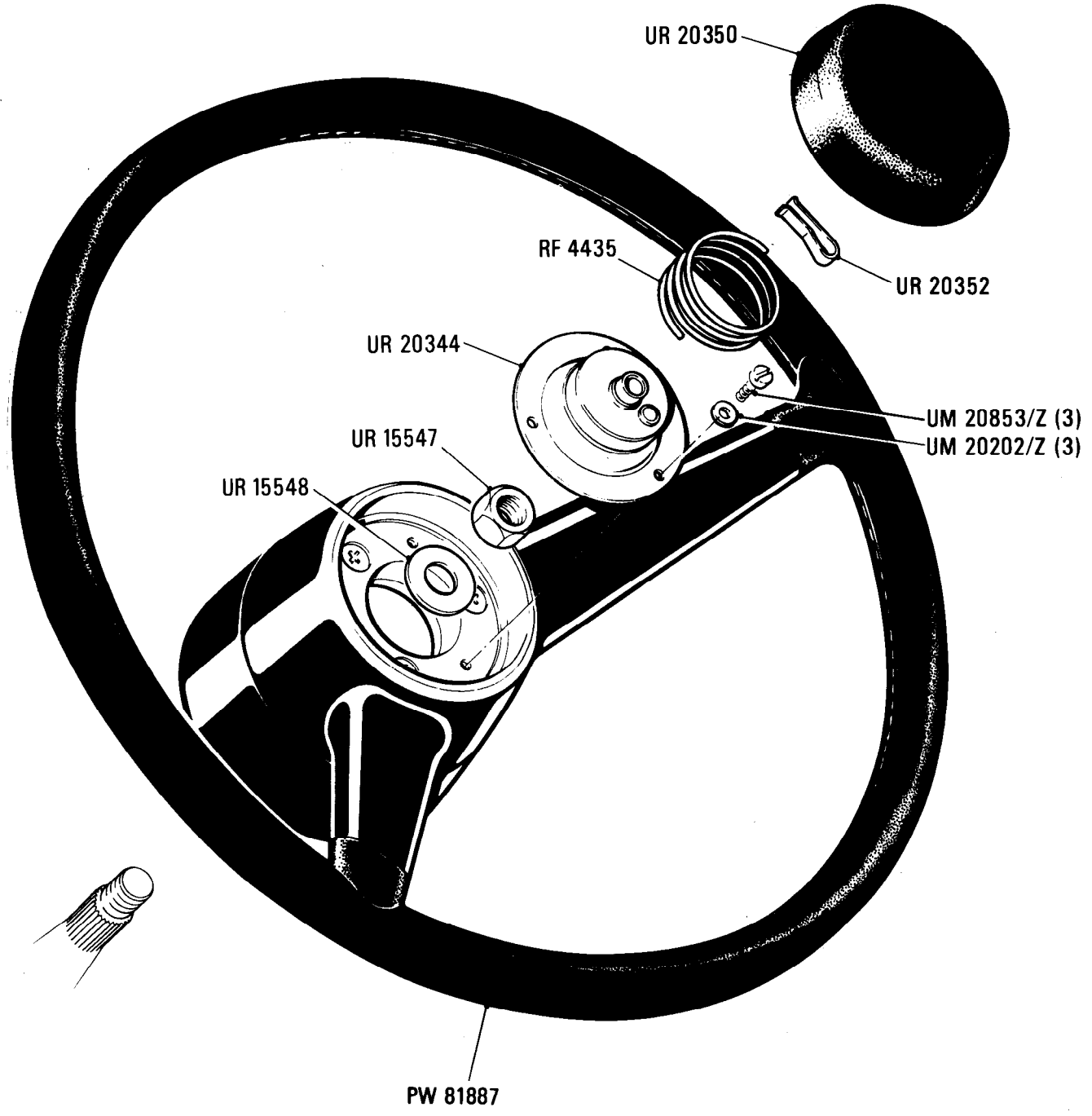
**Power Assisted Steering**  
Steering Wheel and Horn Button

Car serial number

SCAZD42A5CCX05038 to 29290

Parts marked thus \* refer to Additional Information below

◁ Left-hand ▷ Right-hand



Additional Information

© Rolls-Royce Motor Cars Limited 1991

N1•002•02

Rolls-Royce

Bentley  
Continental

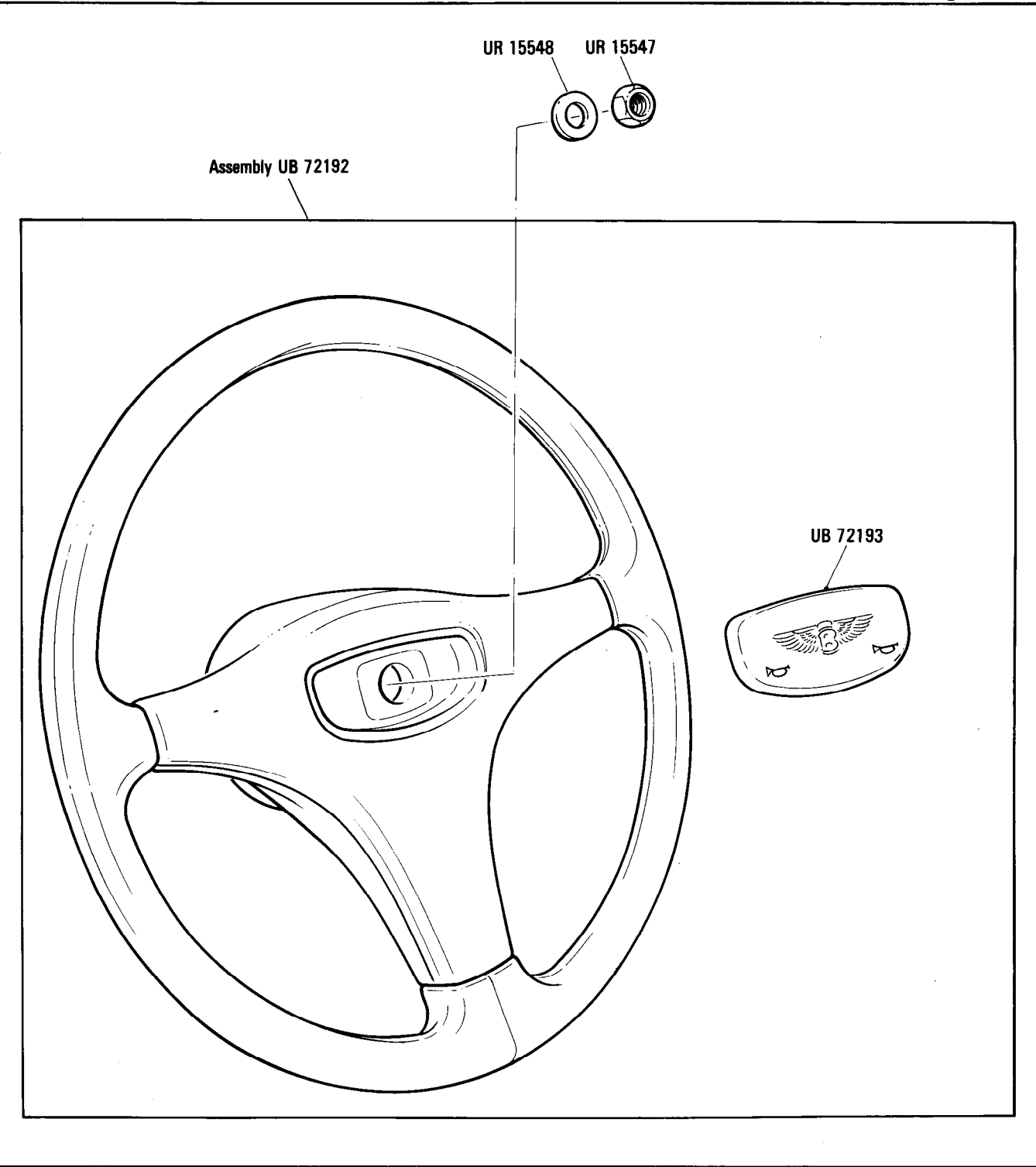
**Power Assisted Steering**  
Steering Wheel & Horn Button

Car serial number

SCBZD02A1KCX23247, 24770 to 29290

Parts marked thus \* refer to Additional Information below

◁ Left-hand ▷ Right-hand



Additional Information

© Rolls-Royce Motor Cars Limited 1991

N2·001·04

Rolls-Royce  
Corniche  
Convertible

Bentley  
Corniche  
Convertible

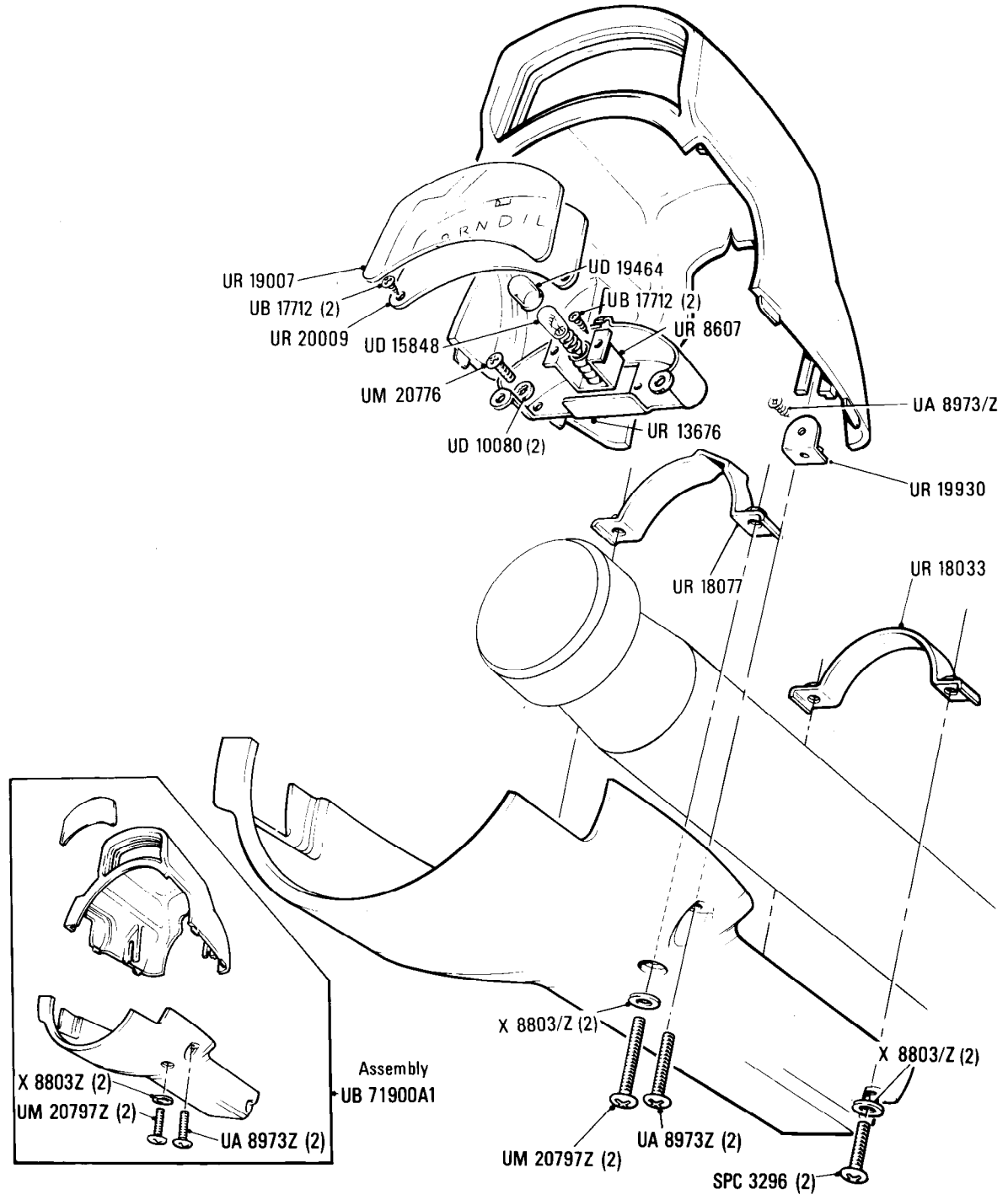
Car serial number

Corniche & Continental  
SCAZD0006CCH05037 to 29290

Power Assisted Steering  
Column Cowling

Parts marked thus \* refer to Additional Information below

◀ Left-hand ▶ Right-hand



Additional Information

© Rolls-Royce Motor Cars Limited 1991

**N3·001·01**

Rolls-Royce  
Corniche

Bentley  
Continental

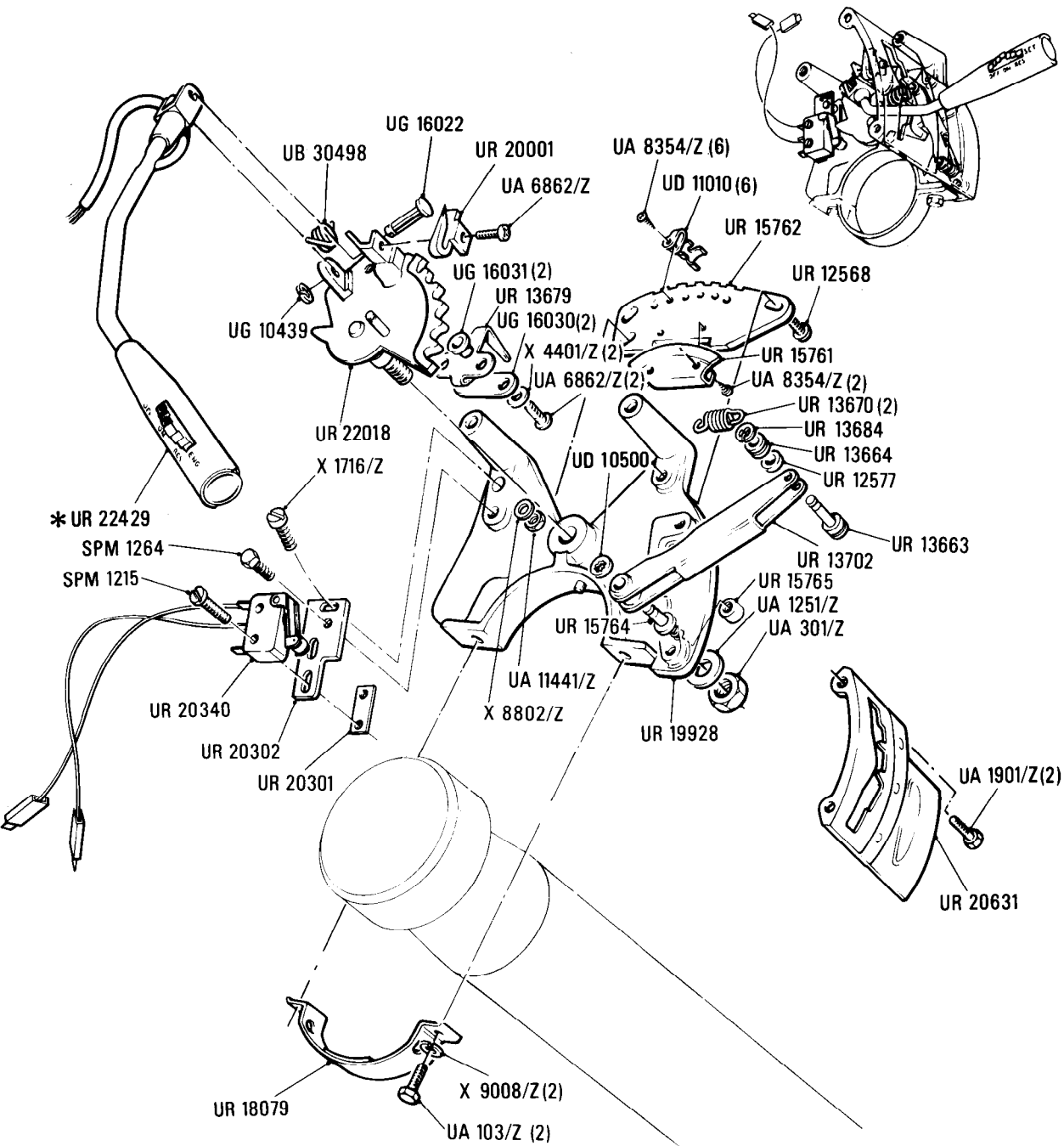
**Car serial number**

**SCAZS0006CCH05037 to 10414**

**Power Assisted Steering  
Gear Selector**

**Parts marked thus \* refer to Additional Information below**

◀Left-hand ▶Right-hand



**Additional Information**

\* UR 22429 Countries other than Australia  
UR 22430 Australia only

© Rolls-Royce Motors Limited 1987

N3•002•00

Rolls-Royce  
Corniche  
Bentley  
Continental

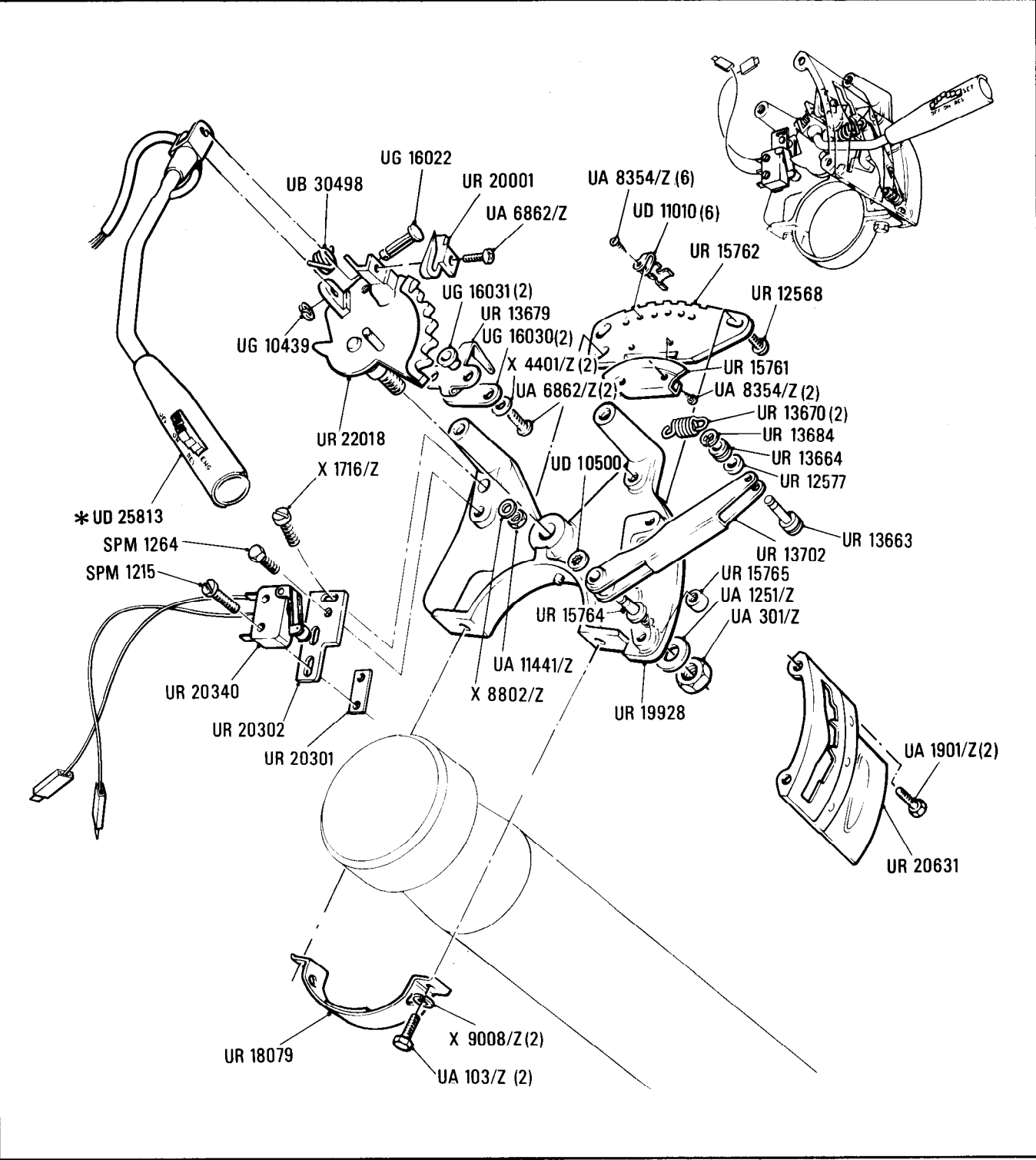
Car serial number

SCAZD42A5GCX13162 to 16968

Power Assisted Steering  
Gear Selector

Parts marked thus \* refer to Additional Information below

◀ Left-hand ▶ Right-hand



Additional Information

© Rolls-Royce Motors Limited 1987

\* UD 25813 Assy gear lever & speed control  
switch countries other than Australia  
  
UD 25880 Assy gear lever & speed  
control switch Australia only

**N3·003·01**

Rolls-Royce  
Corniche

Bentley  
Continental

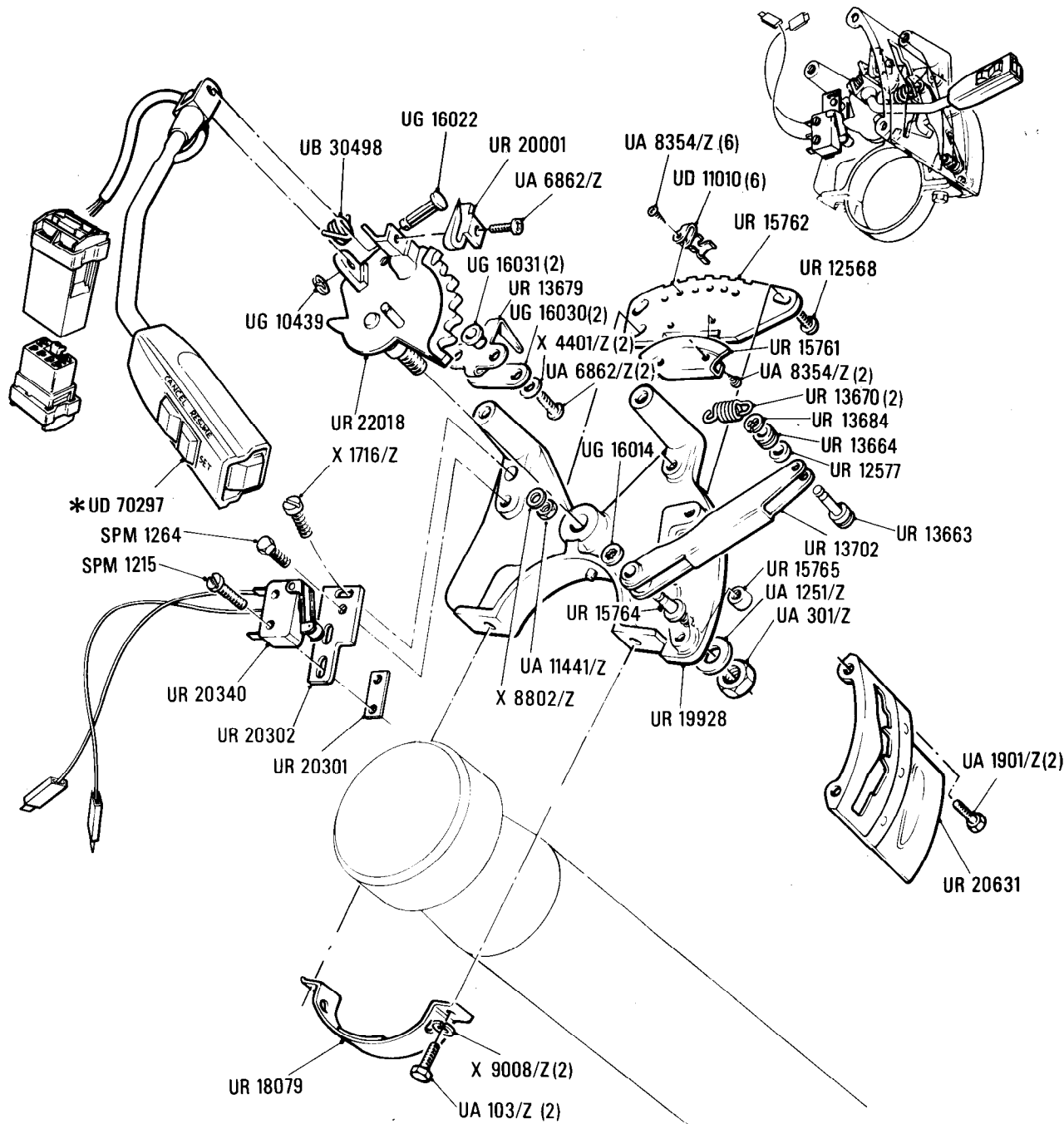
**Power Assisted Steering  
Gear Selector**

**Car serial number**

**Corniche & Continental  
SCAZD0000HCX20010 to 29290**

**Parts marked thus \* refer to Additional Information below**

**◀ Left-hand ▶ Right-hand**



**Additional Information**

**© Rolls-Royce Motor Cars Limited 1991**

- \* UD 70297 Assy gear lever & speed control switch  
For countries other than Australia**
- UD 70298 Assy gear lever & speed control switch  
Cars to Australia**

N4·001·01

Rolls-Royce  
Corniche

Bentley  
Continental

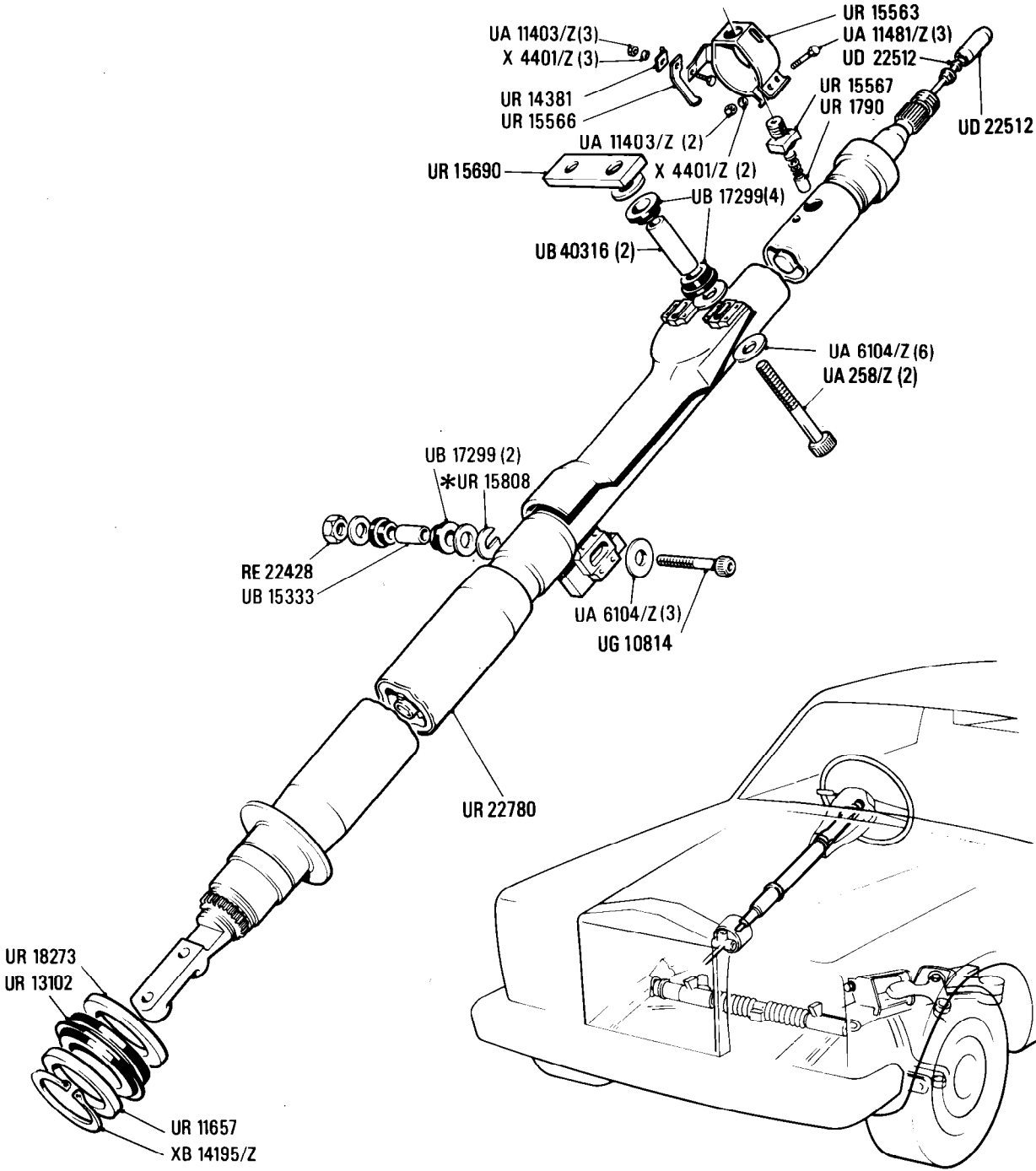
Car serial number

SCAZD0006CCH05037 to 29290

**Power Assisted Steering  
Steering Column**

Parts marked thus \* refer to Additional Information below

◀ Left-hand ▶ Right-hand



Additional Information

\* UR 15808 as required

© Rolls-Royce Motor Cars Limited 1991



N5•001•04

Rolls-Royce  
Corniche  
Convertible

Bentley  
Corniche  
Convertible

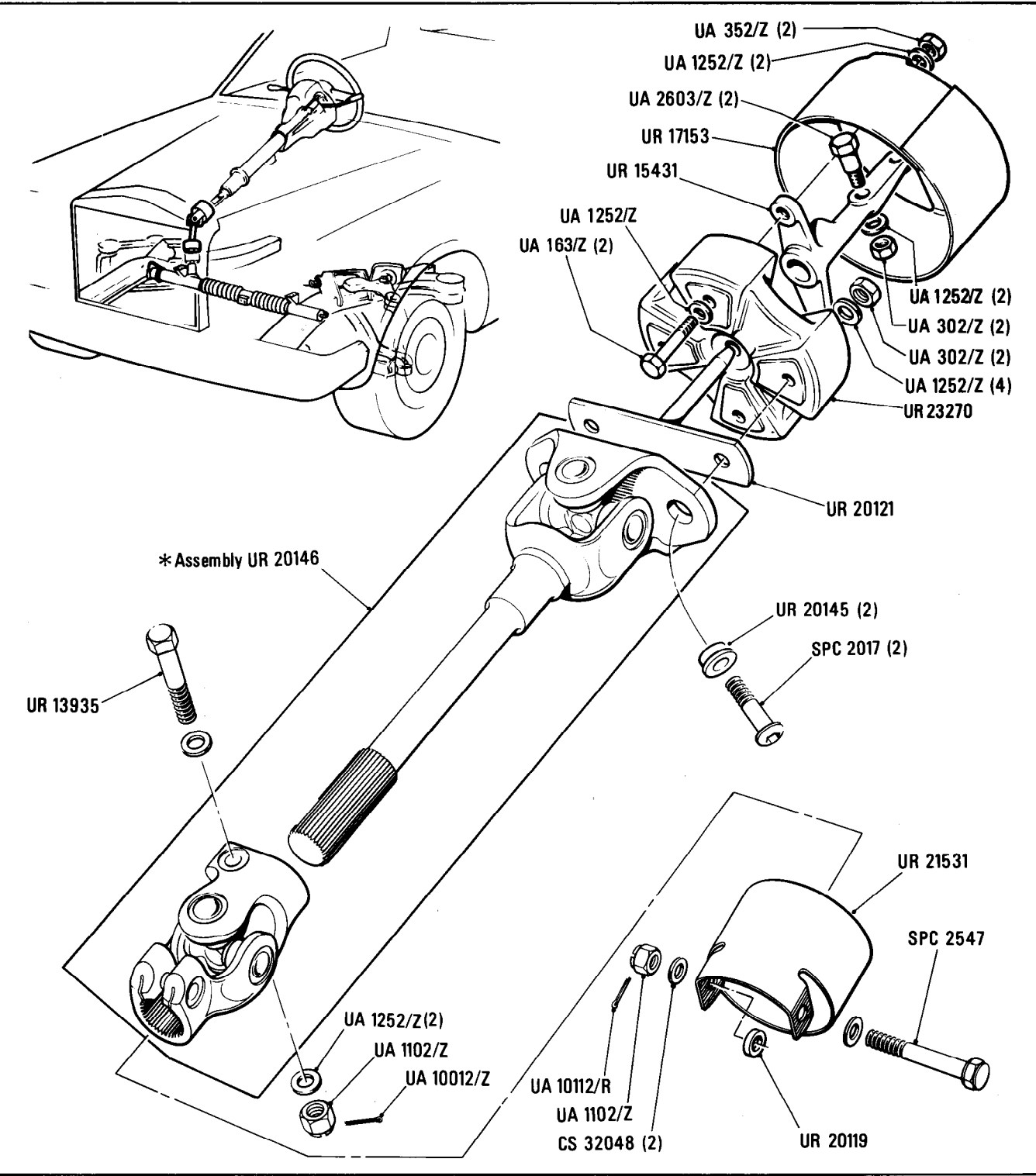
Car serial number

SCAZD0006CCH05037 to 29290

**Power Assisted Steering  
Input Shaft and Universal Coupling**

Parts marked thus \* refer to Additional Information below

◀ Left-hand ▶ Right-hand



**Additional Information**

\*UR 20146 Refer to PSIS N3 before ordering

© Rolls-Royce Motor Cars Limited 1991

**Power Assisted Steering  
Rack and Pinion Steering**

**Car serial number**

**Rolls-Royce**

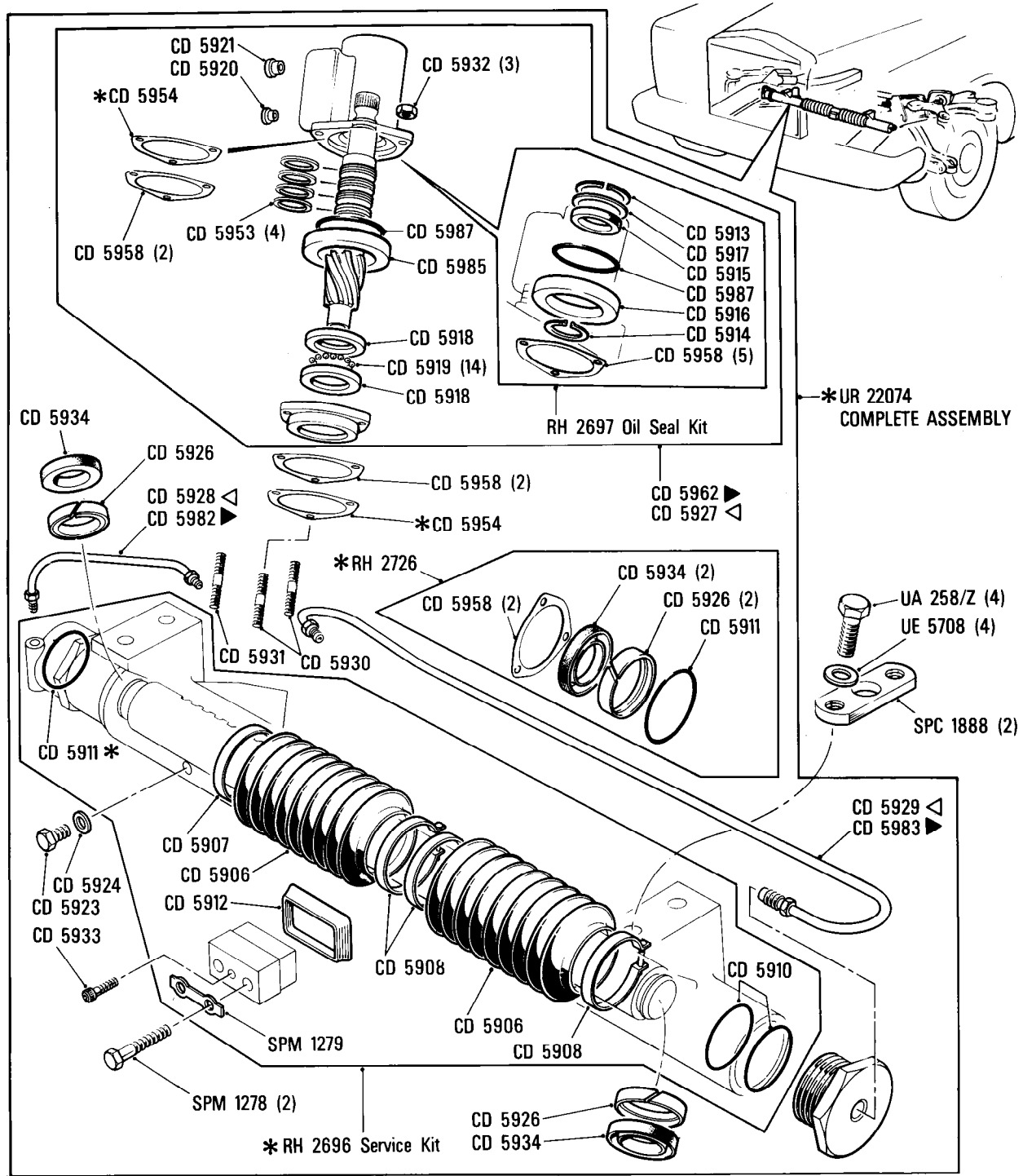
**Corniche**  
SCAZD0006CCH05037 to JCX24637  
excluding KCH23246  
SCAZD02A4KCX24638 to 24653

**Bentley**

**Continental**  
SCAZD0006CCH05037 to JCX24445  
excluding KCX23247  
SCAZD02A4KCX24638 to 24653

Parts marked thus \* refer to Additional Information below

◁ Left-hand ▷ Right-hand



**Additional Information**

© Rolls-Royce Motors Limited 1991

\*UR 22074 Complete assembly RHD cars Refer to PSIS N3  
UR 22075 Complete assembly LHD cars before ordering

**Power Assisted Steering  
Rack & Pinion Steering**

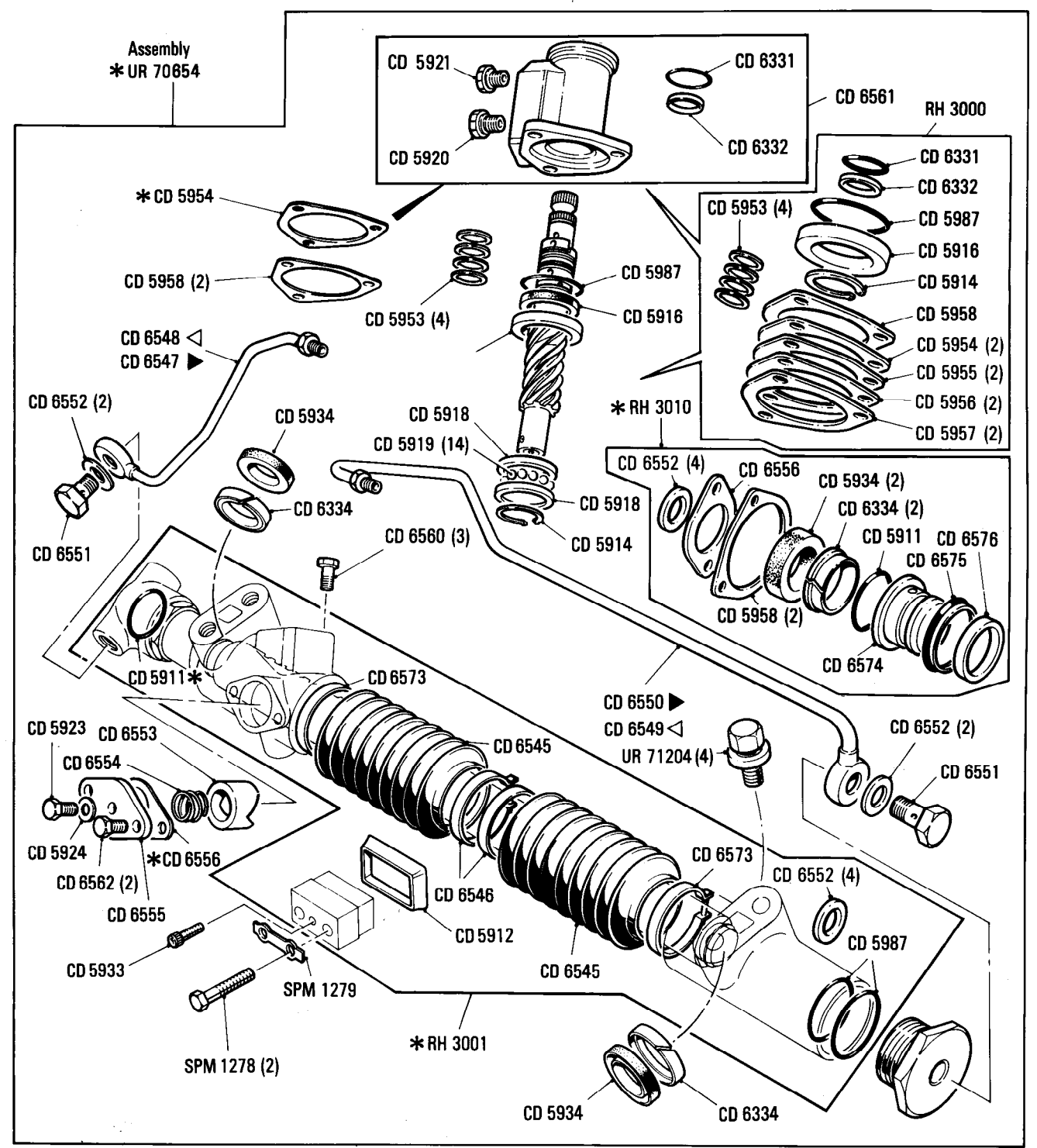
**Car serial number**

**Corniche**  
SCAZD00A7KCH23246 to 29289  
excluding KCX24638 to KCX24653

**Continental**  
SCBZD02A1 KCX23247, 24770 to 29290  
excluding KCX24638 to KCX24653

Parts marked thus \* refer to Additional Information below

◁ Left-hand ▷ Right-hand



**Additional Information**

© Rolls-Royce Motor Cars Limited 1991

- \* UR 70654 RH Drive cars  
UR 70655 LH Drive cars
- \* CD 5911 Supplied only with overhaul kit RH 2895  
Not with RH 3001 service kit
- \* CD 5954 .002 in thick  
CD 5955 .005 in thick } as required  
CD 5956 .010 in thick  
CD 5957 .050 in thick
- \* RH 3001 Service kit for rack
- \* RH 3010 Overhaul kit for rack

- \* CD 6556 Joint washer 0.005 in  
CD 6557 0.002 in  
CD 6558 0.006 in } as required  
CD 6559 0.010 in

N7-001-01

Rolls-Royce  
Corniche

Bentley  
Continental

**Power Assisted Steering**  
Pipes, Hoses and Oil Cooler

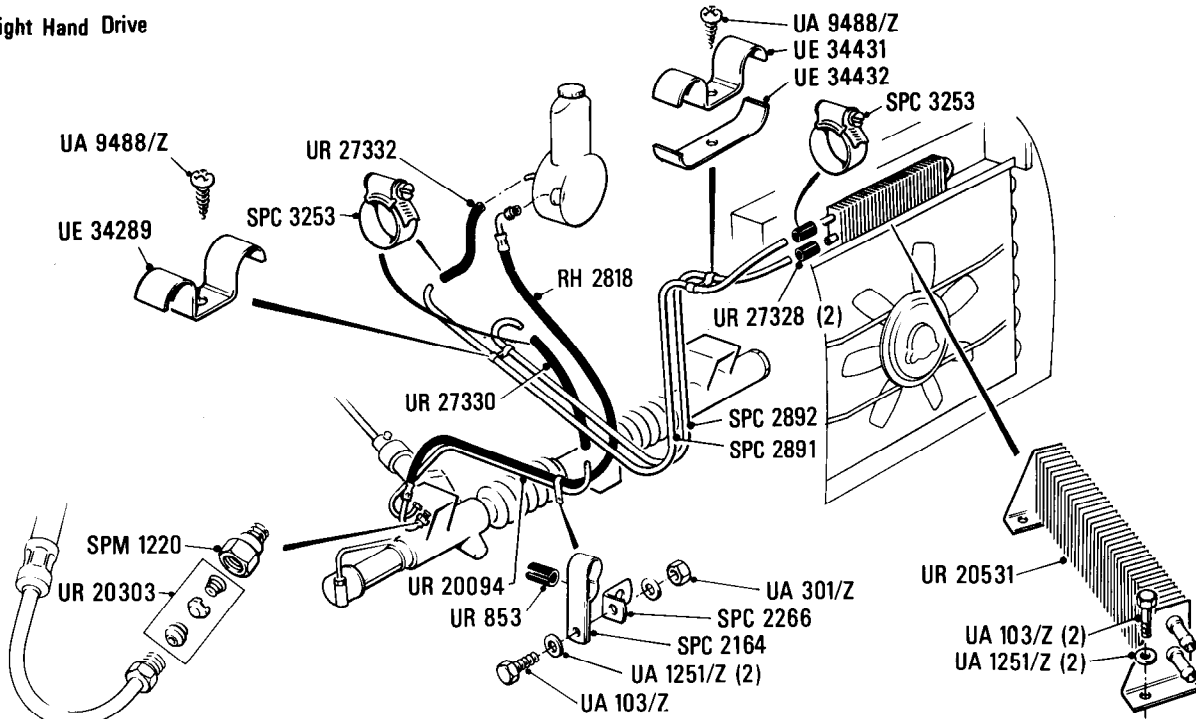
Car serial number

Corniche  
SCAZD0006CCH05037 to 16968  
Continental  
SCAZD0006CCH05037 to 16890

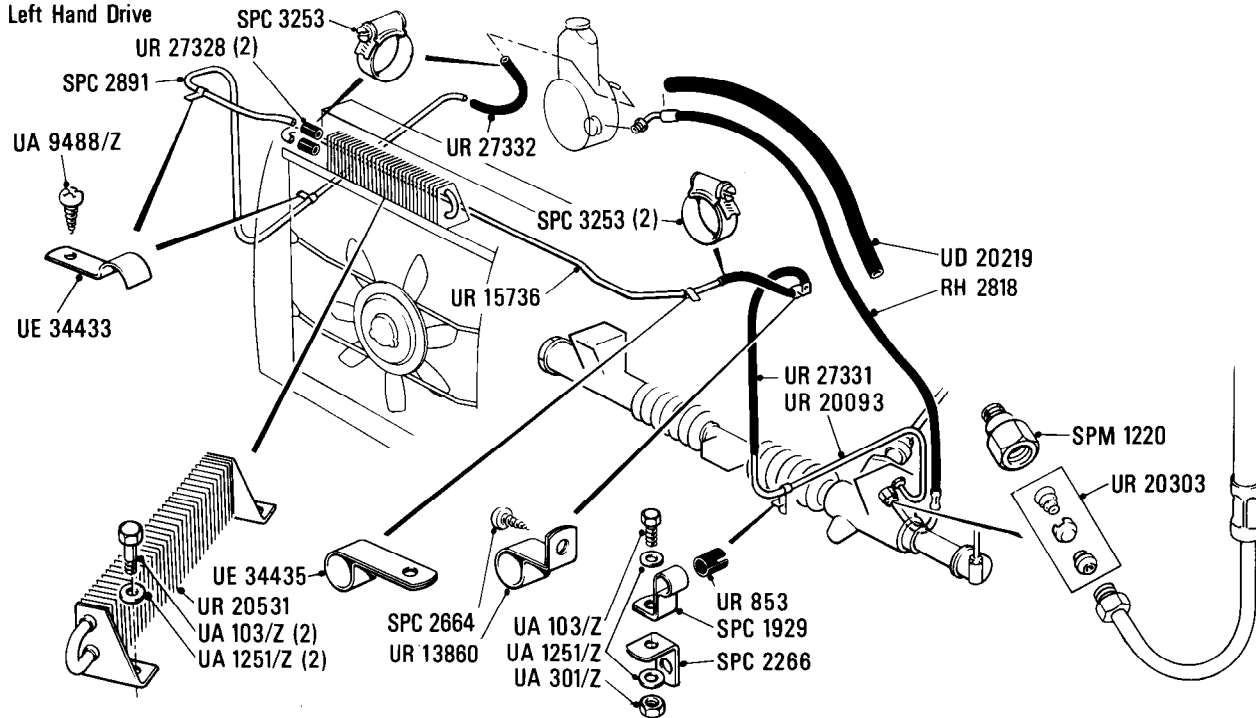
Parts marked thus \* refer to Additional Information below

◀ Left-hand ▶ Right-hand

Right Hand Drive



Left Hand Drive



Additional Information

© Rolls-Royce Motor Cars Limited 1991

**N7·002·01**

Rolls-Royce  
Corniche

Bentley  
Continental

**Power Assisted Steering  
Pipes, Hoses & Oil Cooler**

**Car serial number**

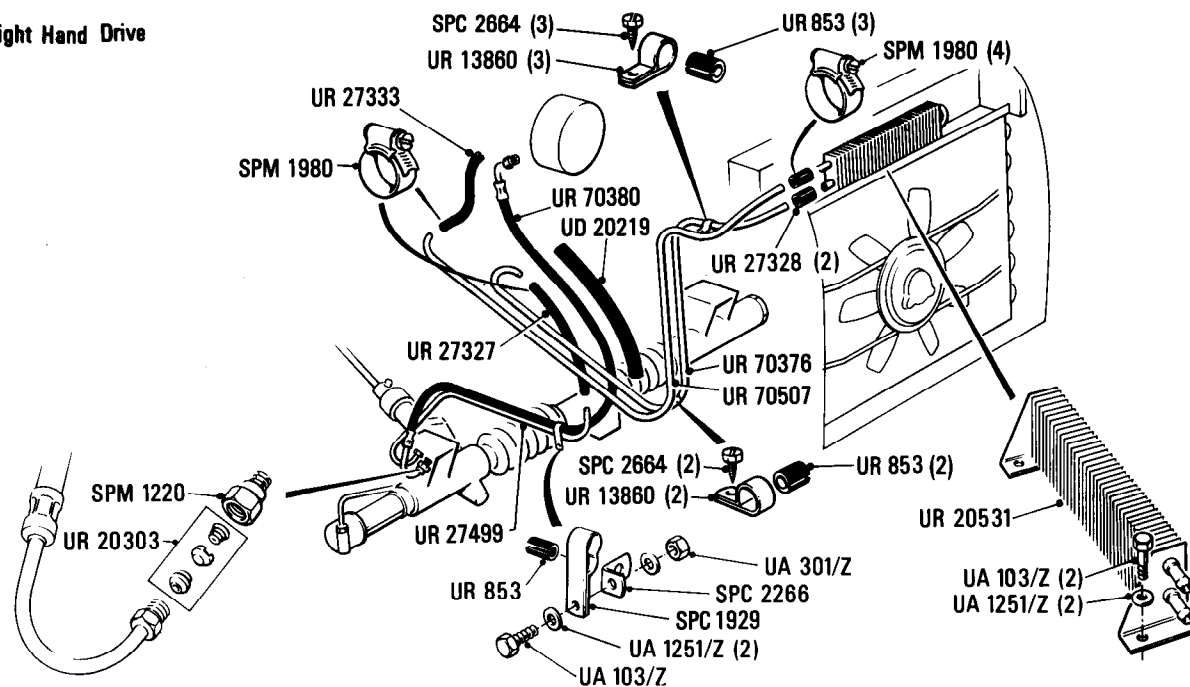
**Corniche**  
SCAZD0ZACH20010 to 29289

**Continental**  
SCBZD000XHCH20238 to 29290

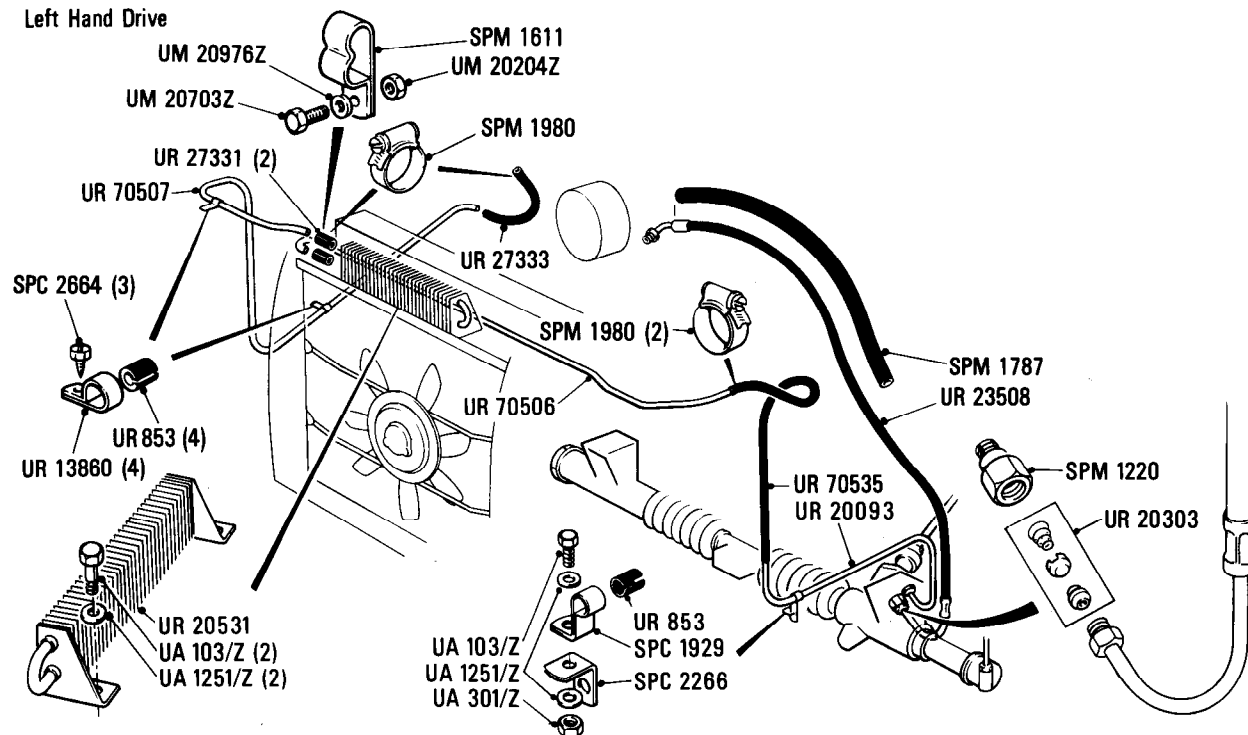
**Parts marked thus \* refer to Additional Information below**

◀Left-hand ▶Right-hand

**Right Hand Drive**



**Left Hand Drive**



**Additional Information**

© Rolls-Royce Motor Cars Limited 1991



**N8-002-01**

Rolls-Royce  
Corniche

Bentley  
Continental

**Power Assisted Steering**  
Track Rod and Side Steering Levers

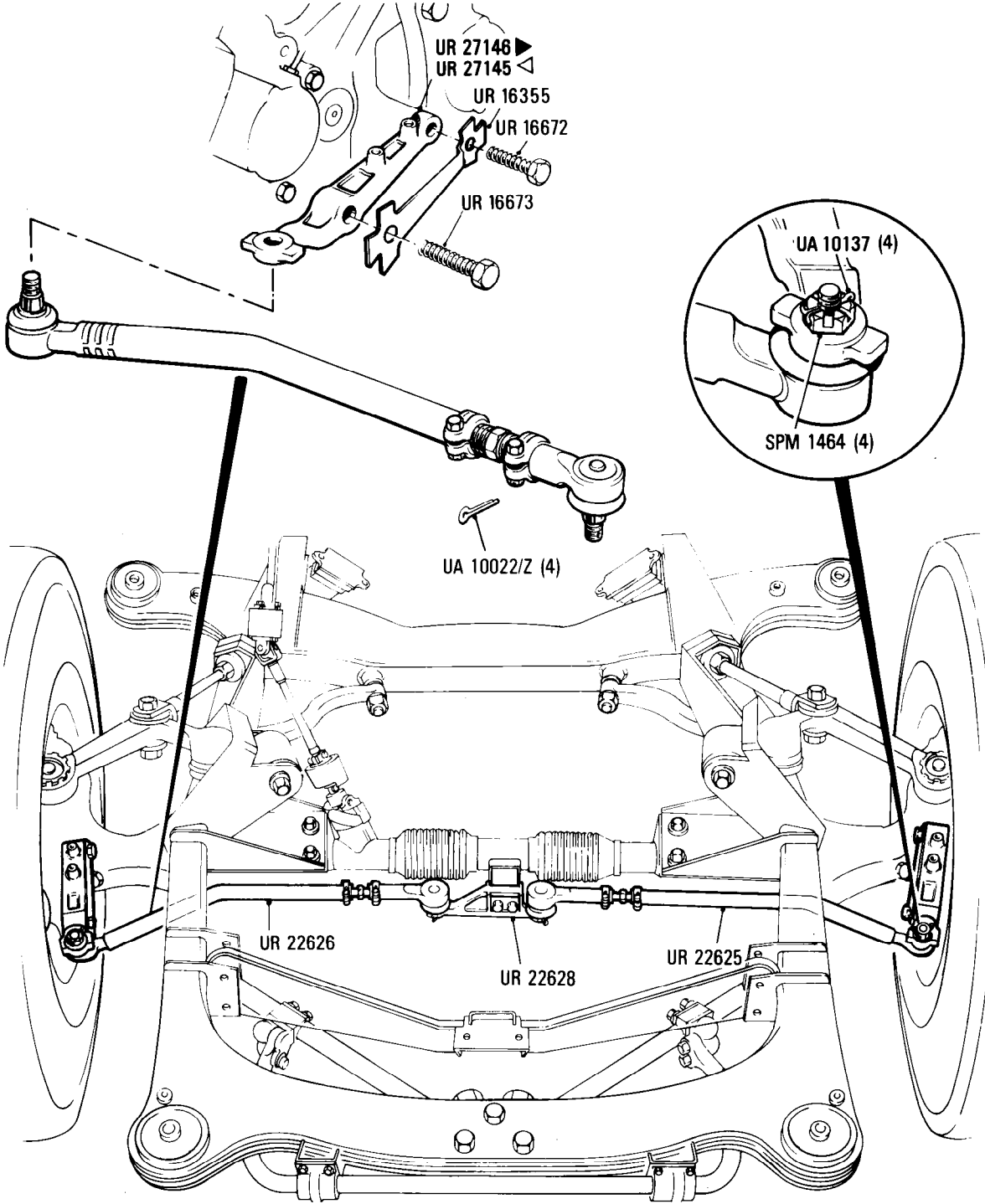
**Car serial number**

**Corniche**  
SCAZD0000HCX20010 to 29289

**Continental**  
SCBZD000XHCH20238 to 29290

Parts marked thus \* refer to Additional Information below

◁ Left-hand ▷ Right-hand



**Additional Information**

© Rolls-Royce Motor Cars Limited 1991

N9-001-01

Rolls-Royce  
Corniche

Bentley  
Continental

Car serial number

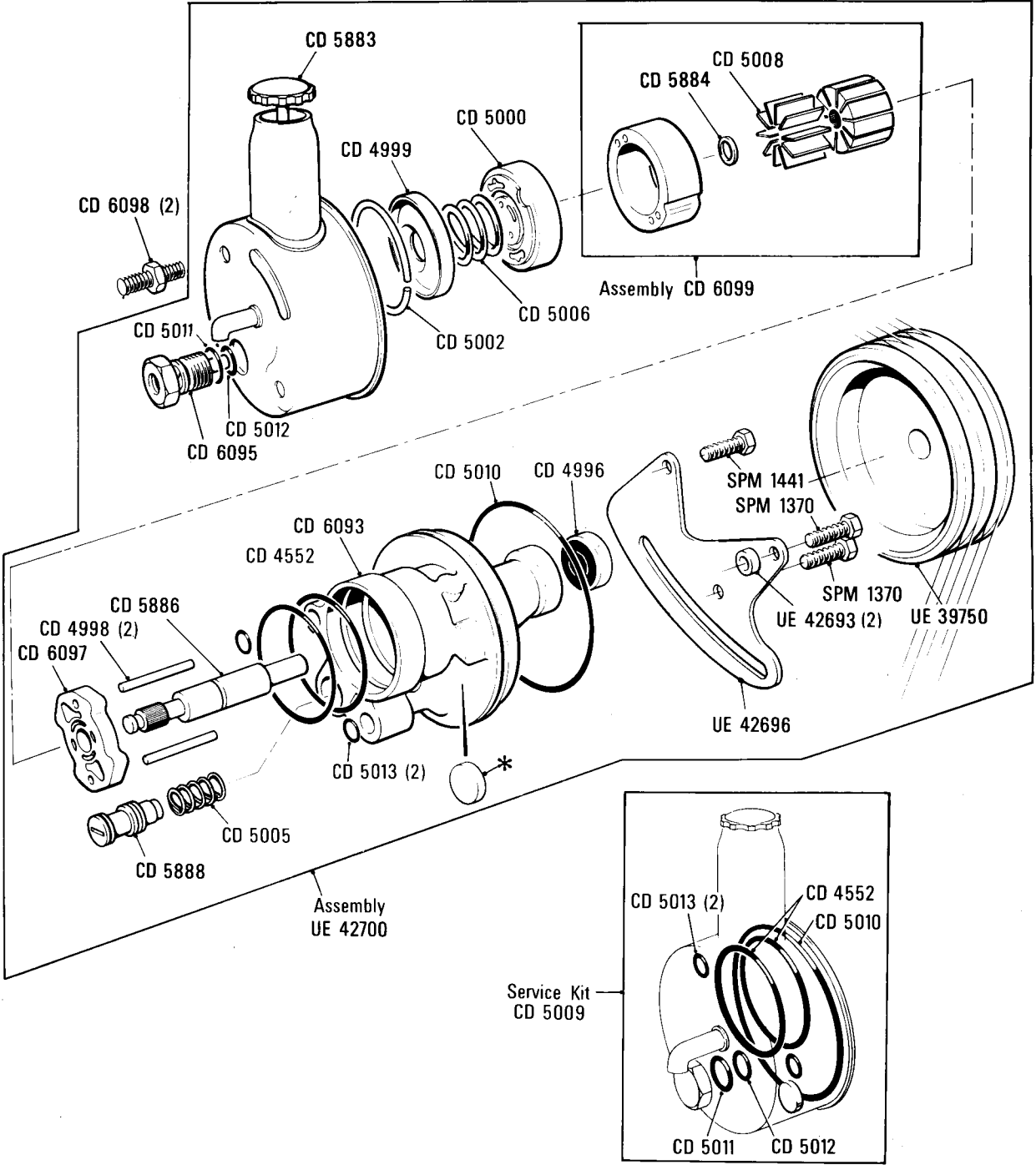
Corniche  
SCAZD0006CCH05037 to 16968

Continental  
SCAZD0006CCH05037 to 16890

**Power Assisted Steering  
Steering Pump**

Parts marked thus \* refer to Additional Information below

◀ Left-hand ▶ Right-hand



Additional Information

© Rolls-Royce Motor Cars Limited 1991



**N9·040·01**

Rolls-Royce  
Corniche

Bentley  
Continental

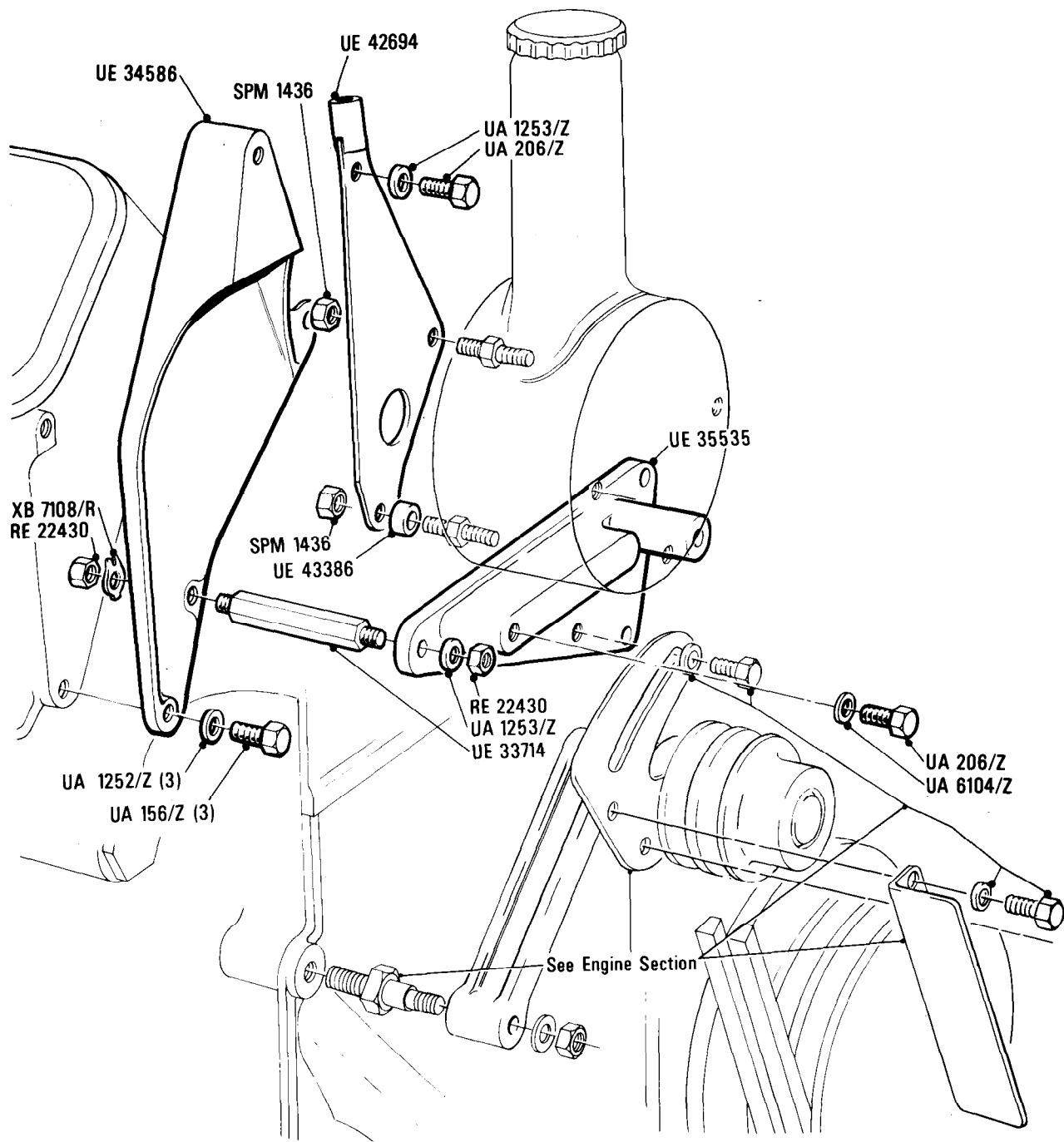
**Power Assisted Steering  
Pump Mounting Bracket**

**Car serial number**

**Corniche**  
SCAZD0006CCH05037 to 16968  
**Continental**  
SCAZD0006CCH05037 to 16890

Parts marked thus \* refer to Additional Information below

◁ Left-hand ▷ Right-hand



**Additional Information**

© Rolls-Royce Motor Cars Limited 1991

**N9·060·01**

Rolls-Royce  
Corniche

Bentley  
Continental

**Car serial number**

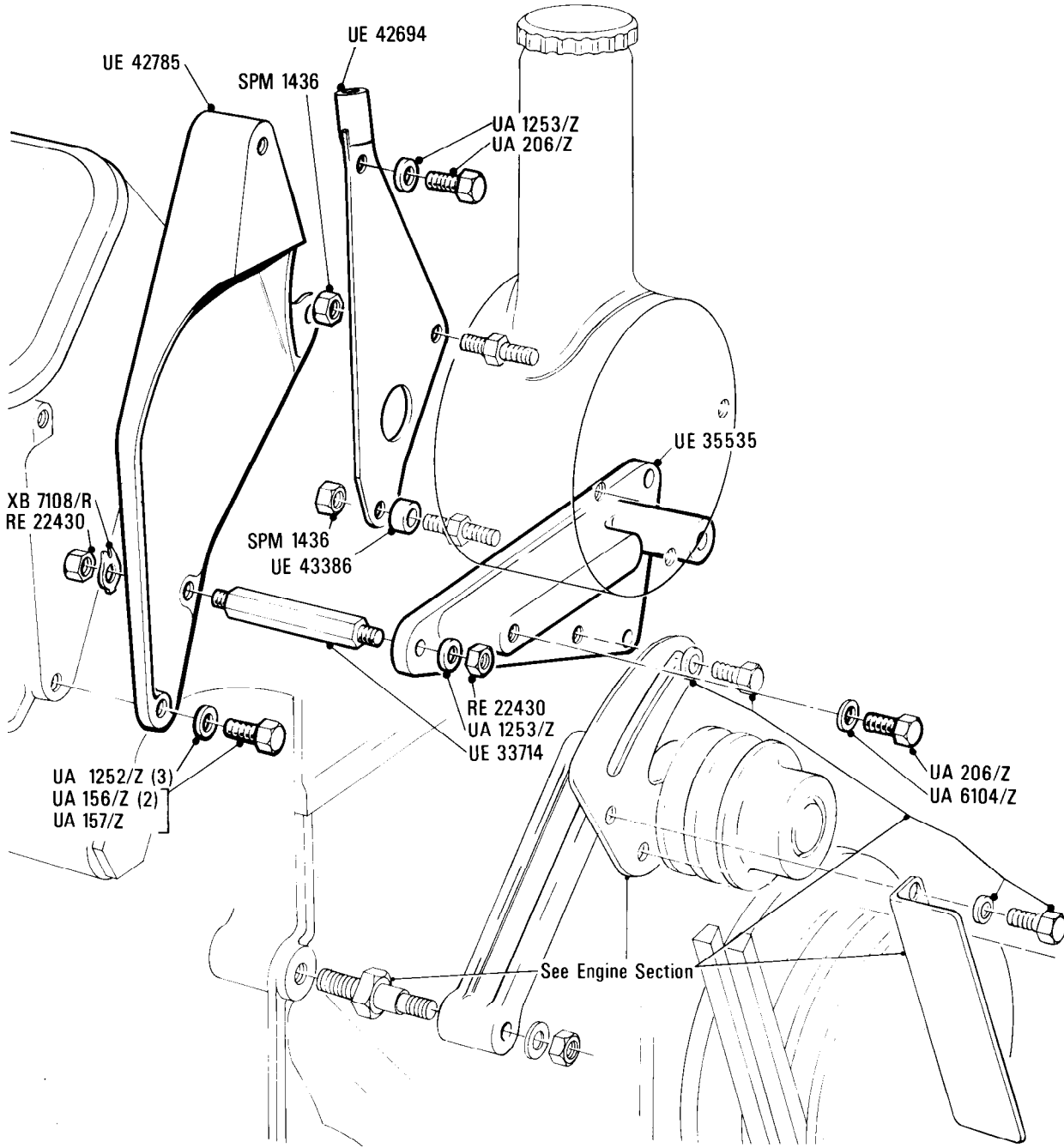
**Corniche**  
SCAZD0006CCH05037 to 16968

**Continental**  
SCAZD0006CCH05037 to 16890

**Power Assisted Steering**  
**Pump Mounting Bracket**  
Cars for N. America, California & Japan

Parts marked thus \* refer to Additional Information below

◀ Left-hand ▶ Right-hand



**Additional Information**

© Rolls-Royce Motor Cars Limited 1991