

# TWO-DOOR MOTOR CARS 1980-1989

## Exhaust System Menu

- |    |                                      |
|----|--------------------------------------|
| Q1 | Exhaust system 6-box twin system     |
|    | Five box twin system                 |
|    | Twin box system                      |
| Q2 | Grassfire shields and exhaust mounts |

**Bentley**  
**Continental**

## Six Box Twin System Cars for United Kingdom

Parts marked thus \* refer to Additional Information below

SCAZD0006CCH05037 to 16968



### Additional Information

## Exhaust System

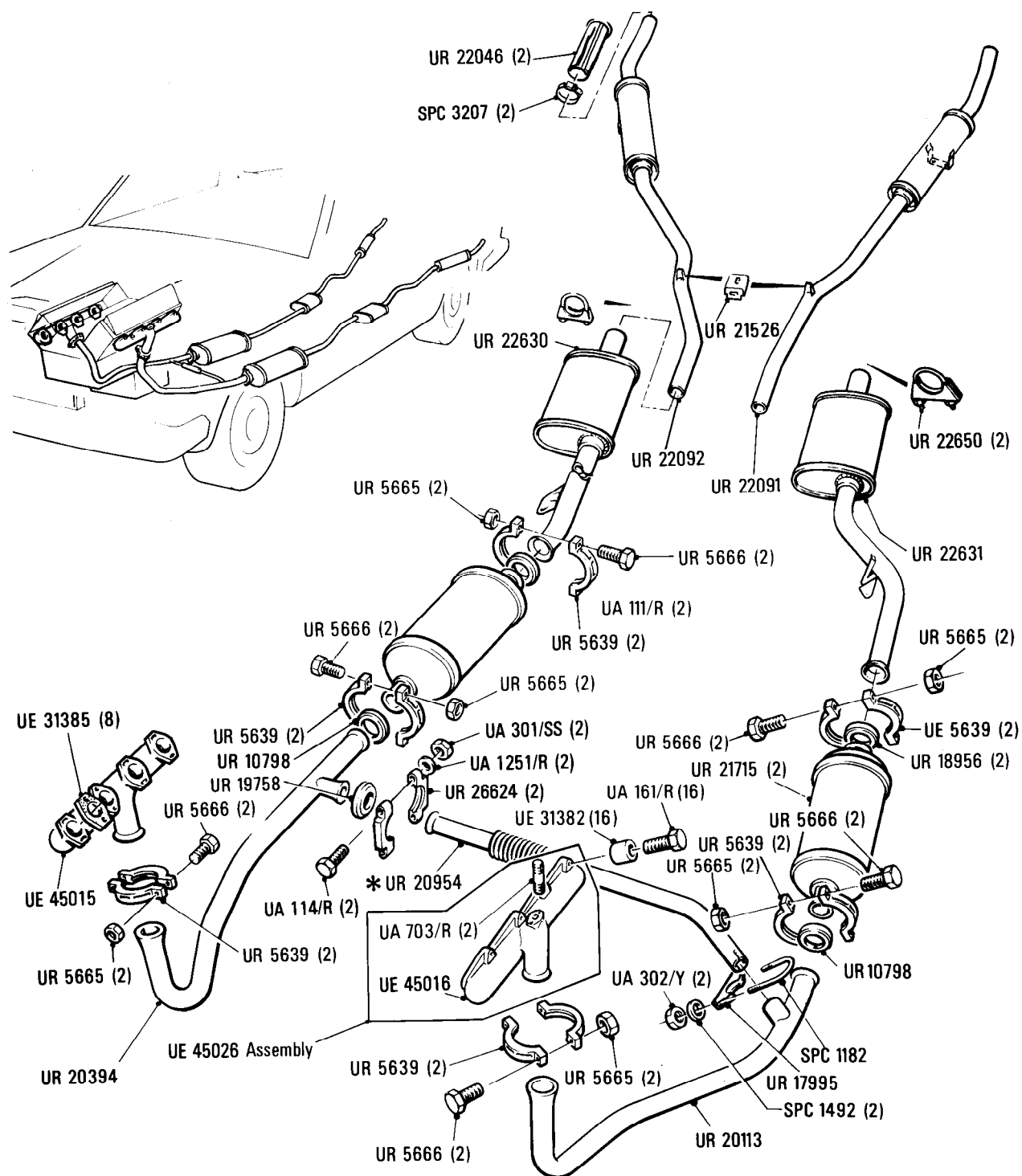
**Six Box Twin System, Countries other than  
N. America, California, Japan & United Kingdom**

Parts marked thus \* refer to Additional Information below

◁ Left-hand ▷ Right-hand

**Car serial number**

SCAZD0006CCH05037 to 16968



### Additional Information

\* UR 20954 Cars for countries other than Australia  
UR 19753 Cars for Australia

© Rolls-Royce Motor Cars Limited 1991

Q1·021·00

Rolls-Royce  
Corniche

Bentley  
Continental

Car serial number

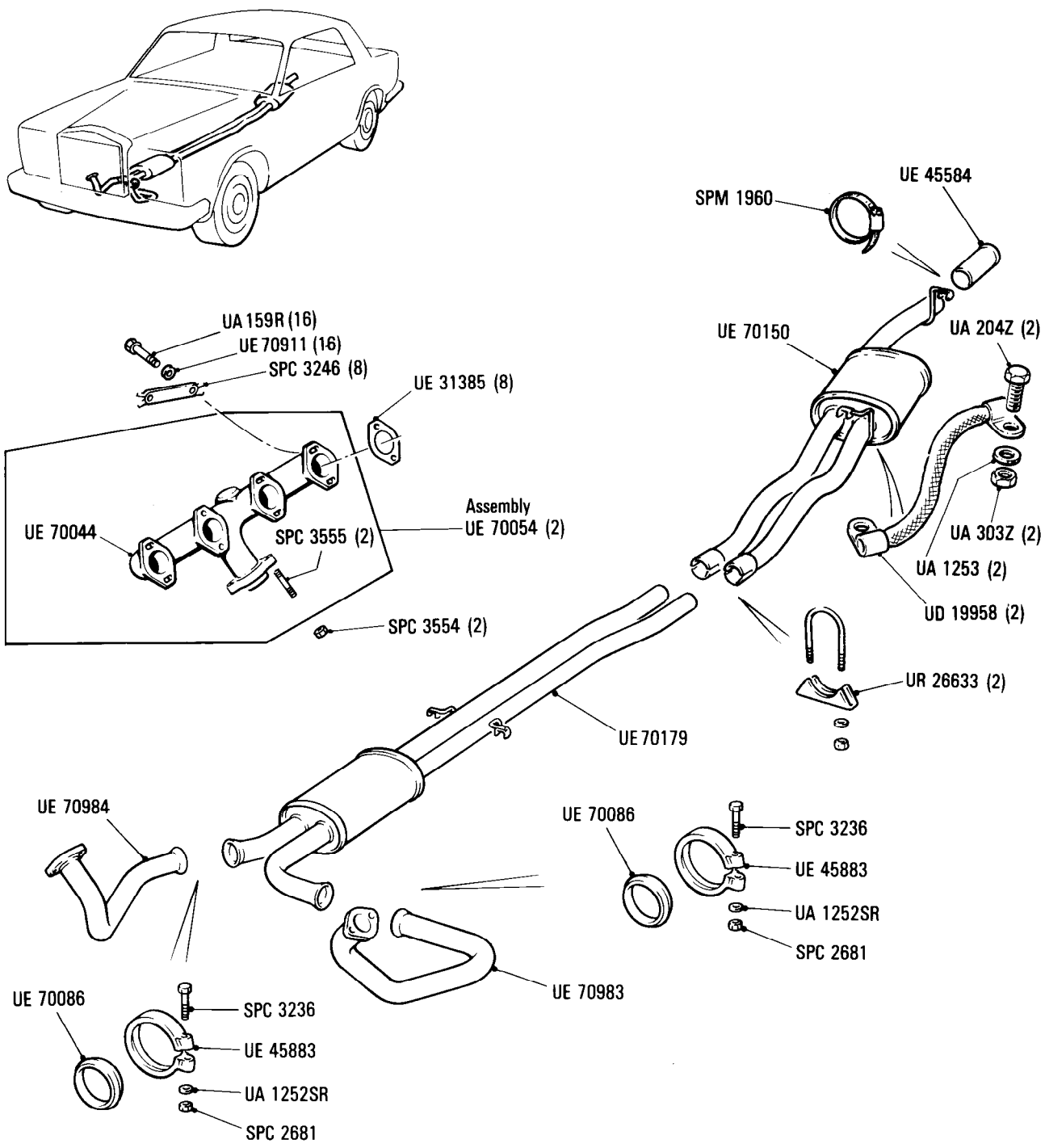
SCAZD02A0HCX20010 to SCAZD02A7KCX29140

**Exhaust System**

Twin Box System, Cars for countries other than  
N. America, Japan & Australia

Parts marked thus \* refer to Additional Information below

◀ Left-hand ▶ Right-hand



**Additional Information**

\*UE 70179 SWB cars only  
UE 70266 LWB cars only

© Rolls-Royce Motor Cars Limited 1987

Q1·022·00

Rolls-Royce  
Corniche

Bentley  
Continental

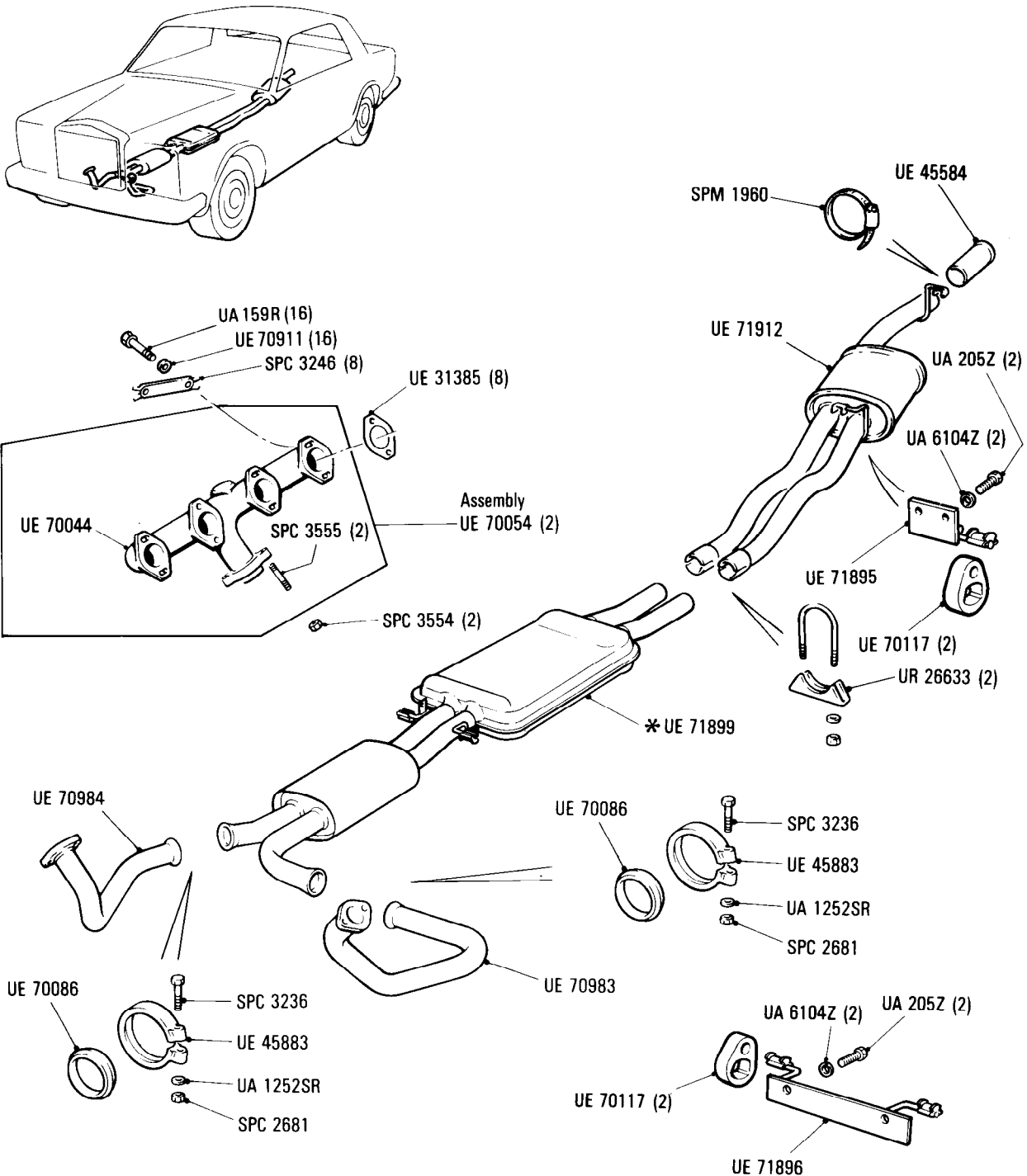
**Exhaust System**  
Non-Catalyst Cars only

Car serial number

SCAZD00A5KCX29141 to 29290

Parts marked thus \* refer to Additional Information below

◁ Left-hand ▷ Right-hand



**Additional Information**

\* UE 71899 SWB cars  
UE 71909 LWB cars

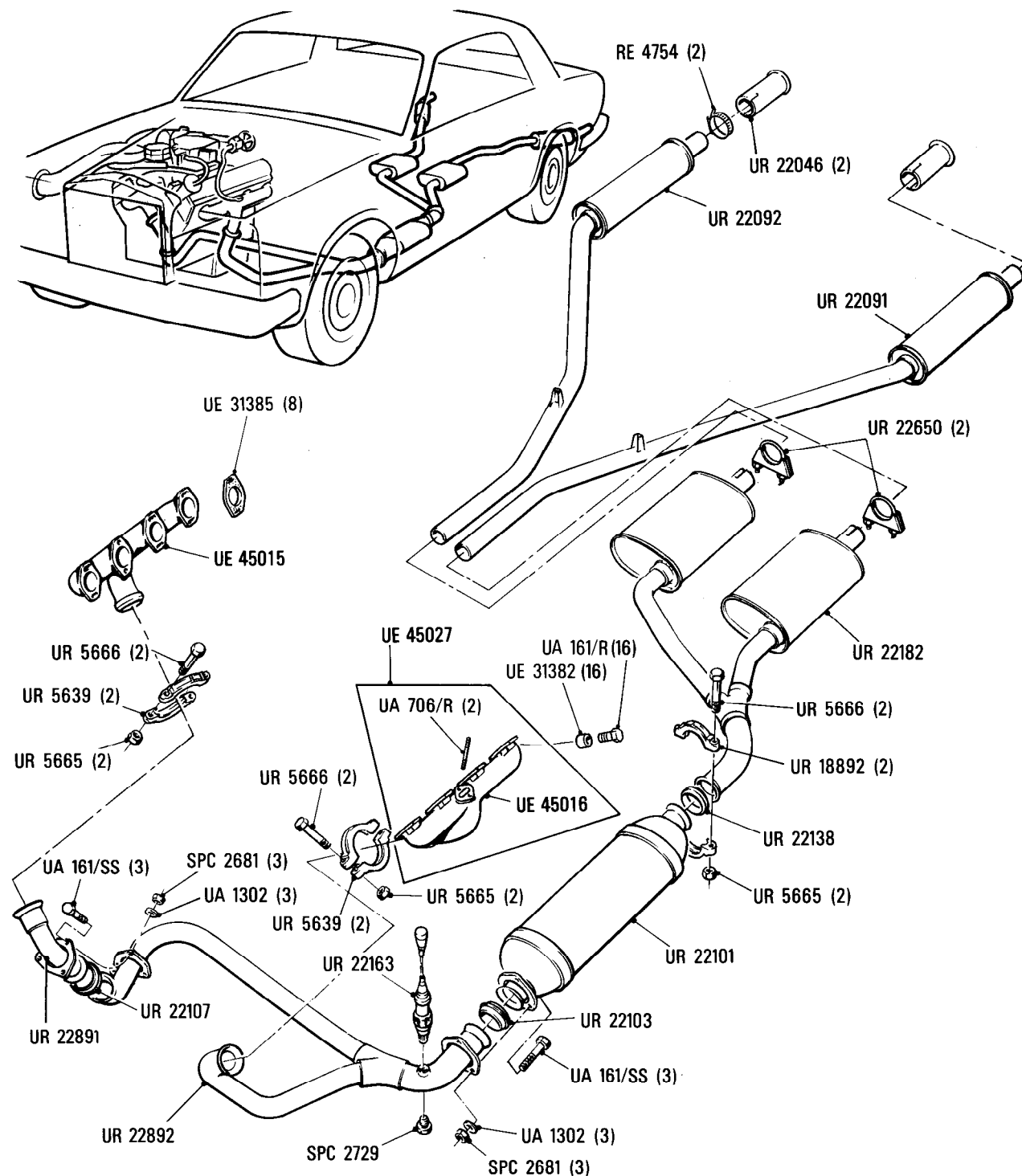
© Rolls-Royce Motor Cars Limited 1987

Parts marked thus \* refer to Additional Information below

◁ Left-hand ▷ Right-hand

**Car serial number**

SCAZD0006CCH05037 to 08893



### Additional Information

© Rolls-Royce Motors Limited 1987

Rolls-Royce  
Corniche

Bentley  
Continental

## Exhaust System

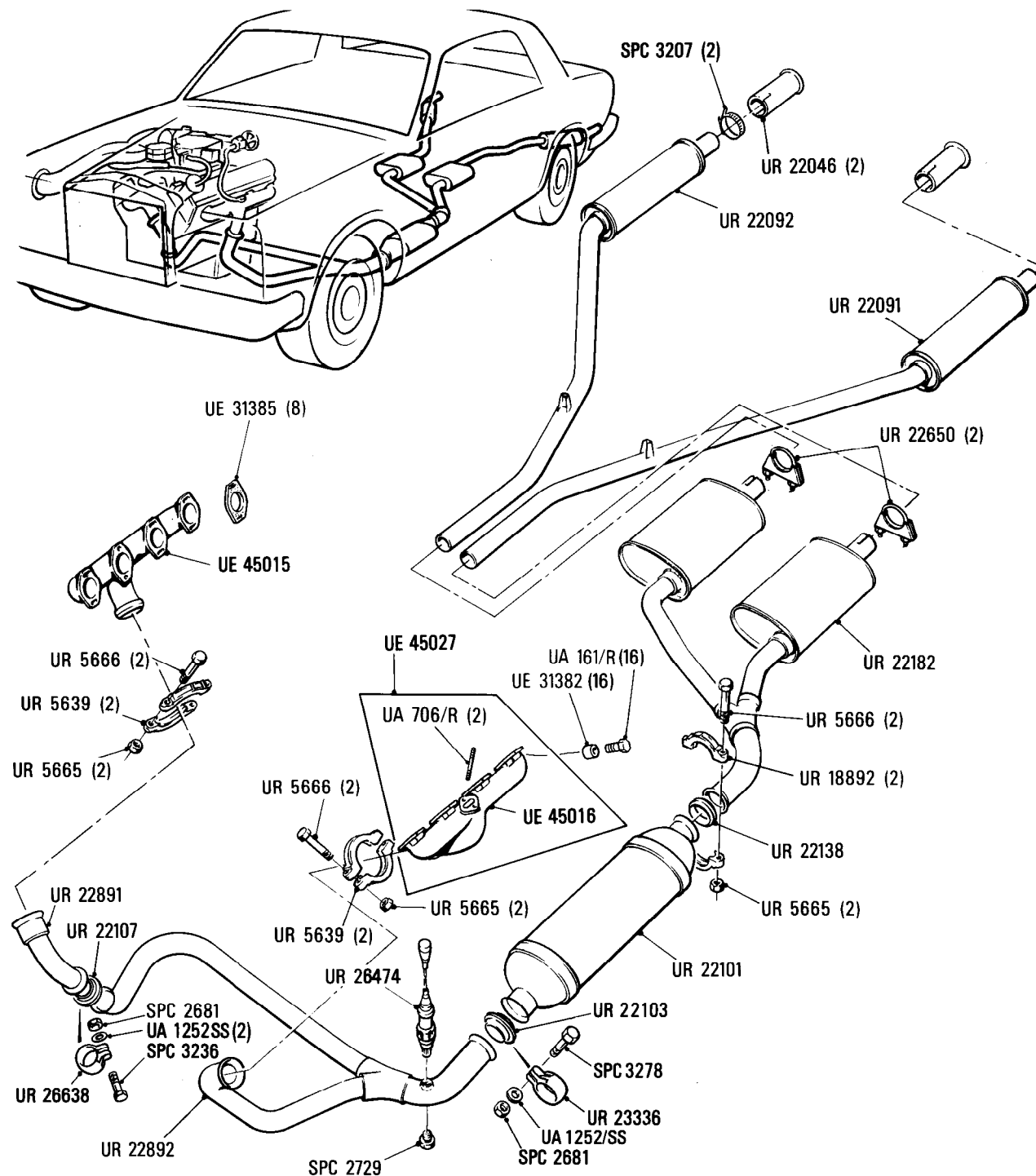
## Five Box Twin System Cars for N. America

◁ Left-hand ▷ Right-hand

**Car serial number**

**SCAZD42A3ECX08894 to 16968**

Parts marked thus \* refer to Additional Information below



### Additional Information

© Rolls-Royce Motor Cars Limited 1991

**Q1-042-01**

Rolls-Royce  
Corniche

Bentley  
Continental

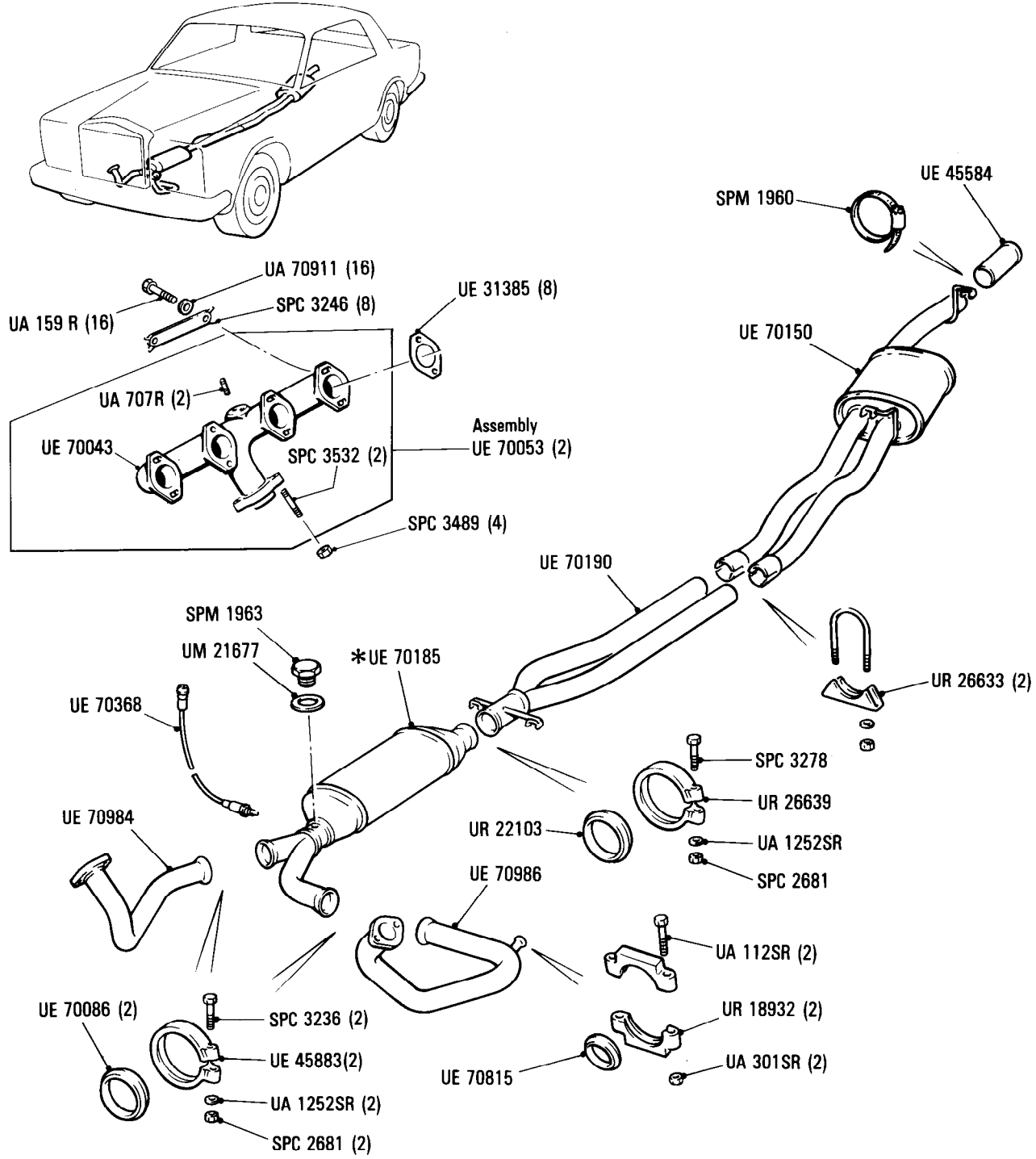
**Car serial number**

SCAZD0000HCX20010 to 29290

**Exhaust System**  
Twin Box System for Cars to N. America & Japan

Parts marked thus \* refer to Additional Information below

◀ Left-hand ▶ Right-hand



**Additional Information**

\* UE 70185 For cars to N. America  
UE 70558 For cars to Japan

© Rolls-Royce Motor Cars Limited 1991



Q1·060·00

Rolls-Royce  
Corniche  
Bentley  
Continental

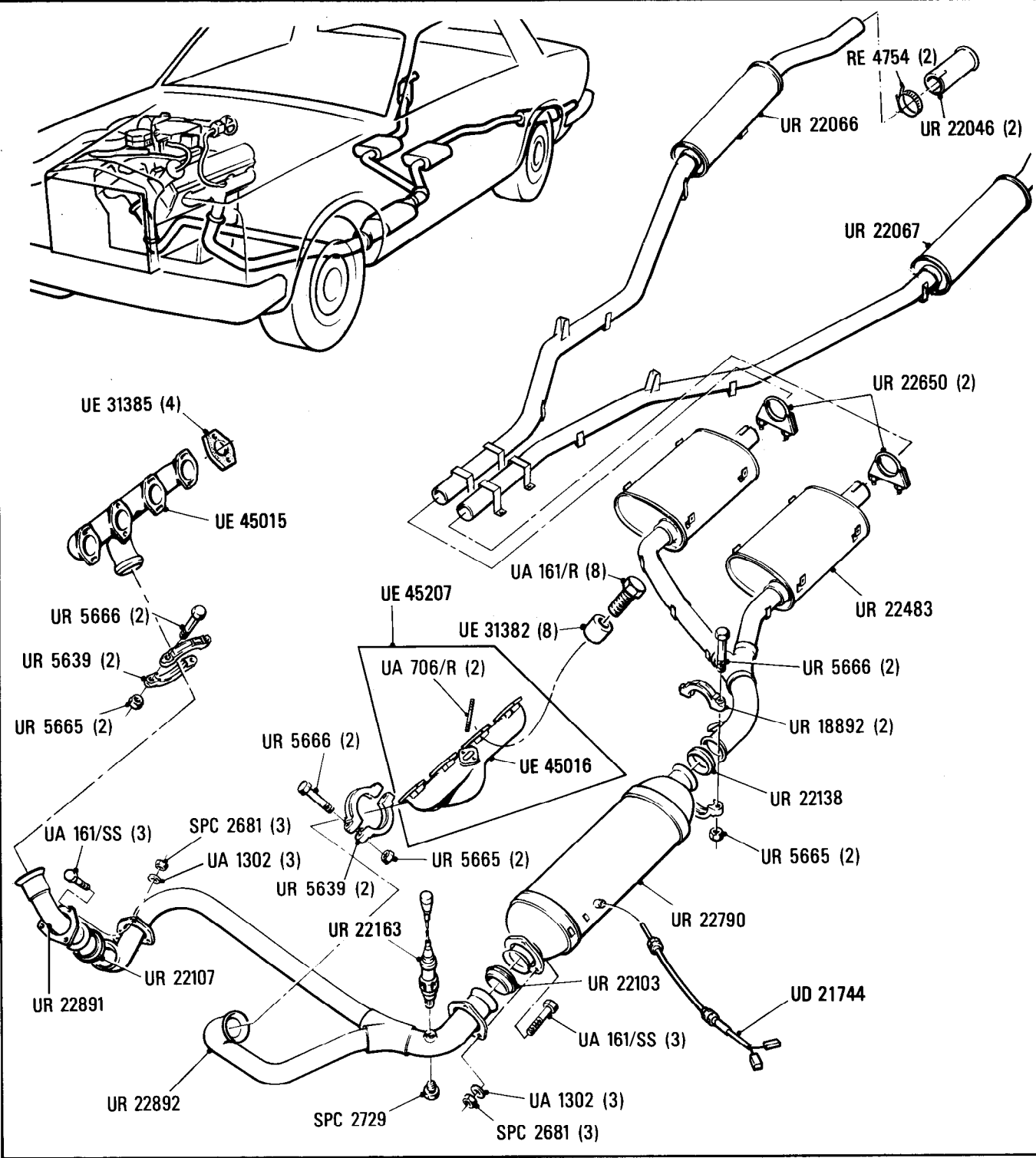
Car serial number

SCAZD0006CCH05037 to 08893

**Exhaust System**  
Five Box Twin System Cars for Japan

Parts marked thus \* refer to Additional Information below

◀Left-hand ▶Right-hand



Additional Information

© Rolls-Royce Motors Limited 1987

Q1-080-01

Rolls-Royce  
Corniche

Bentley  
Continental

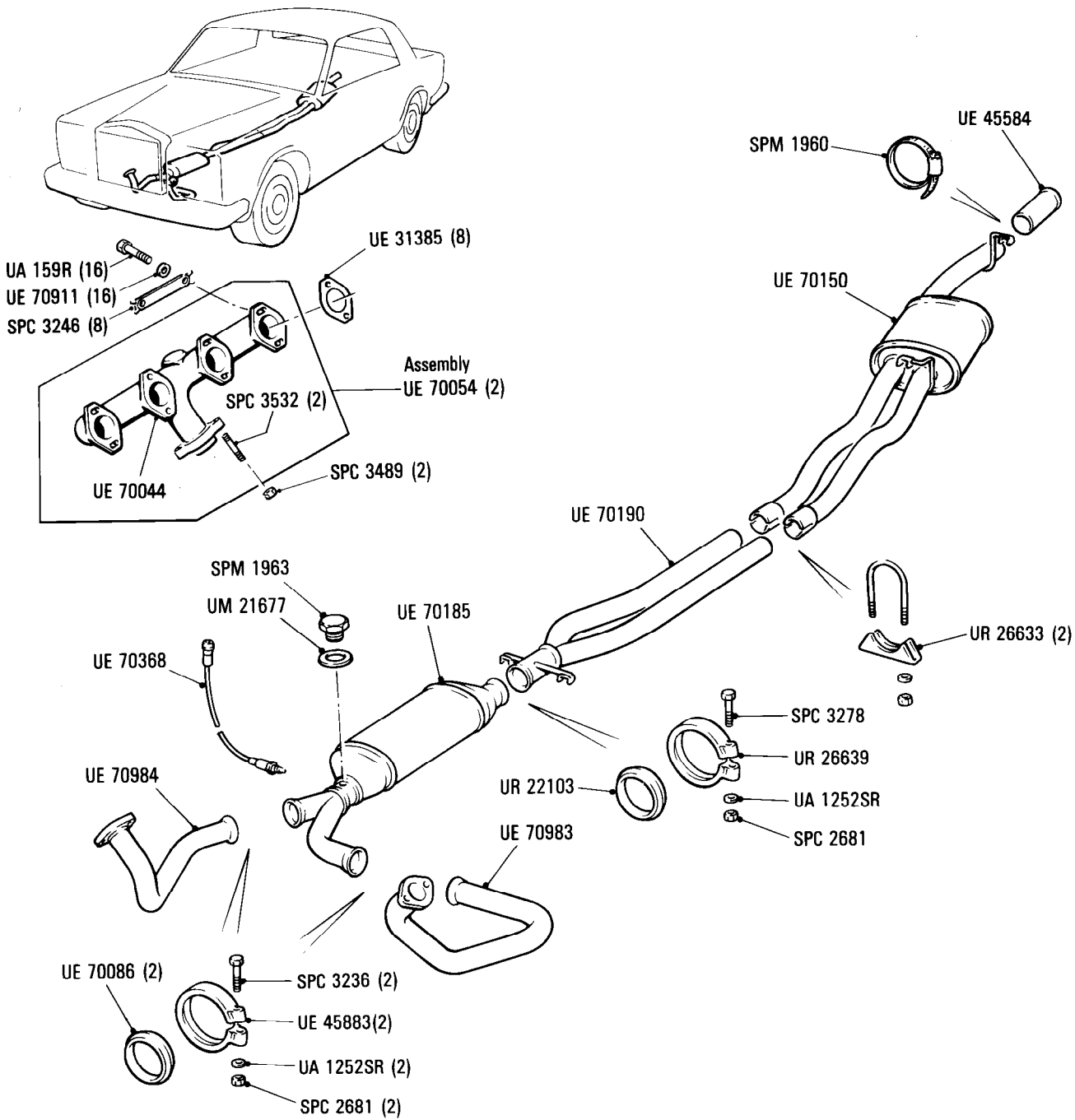
Car serial number

SCAZD0000HCX20010 to 29290

**Exhaust System**  
Twin Box System for Cars to Australia

Parts marked thus \* refer to Additional Information below

◀Left-hand ▶Right-hand



Additional Information

© Rolls-Royce Motor Cars Limited 1991

**Q2-001-01**

Rolls-Royce  
Corniche

Bentley  
Continental

**Car serial number**

SCAZD0006CCH05037 to 16968

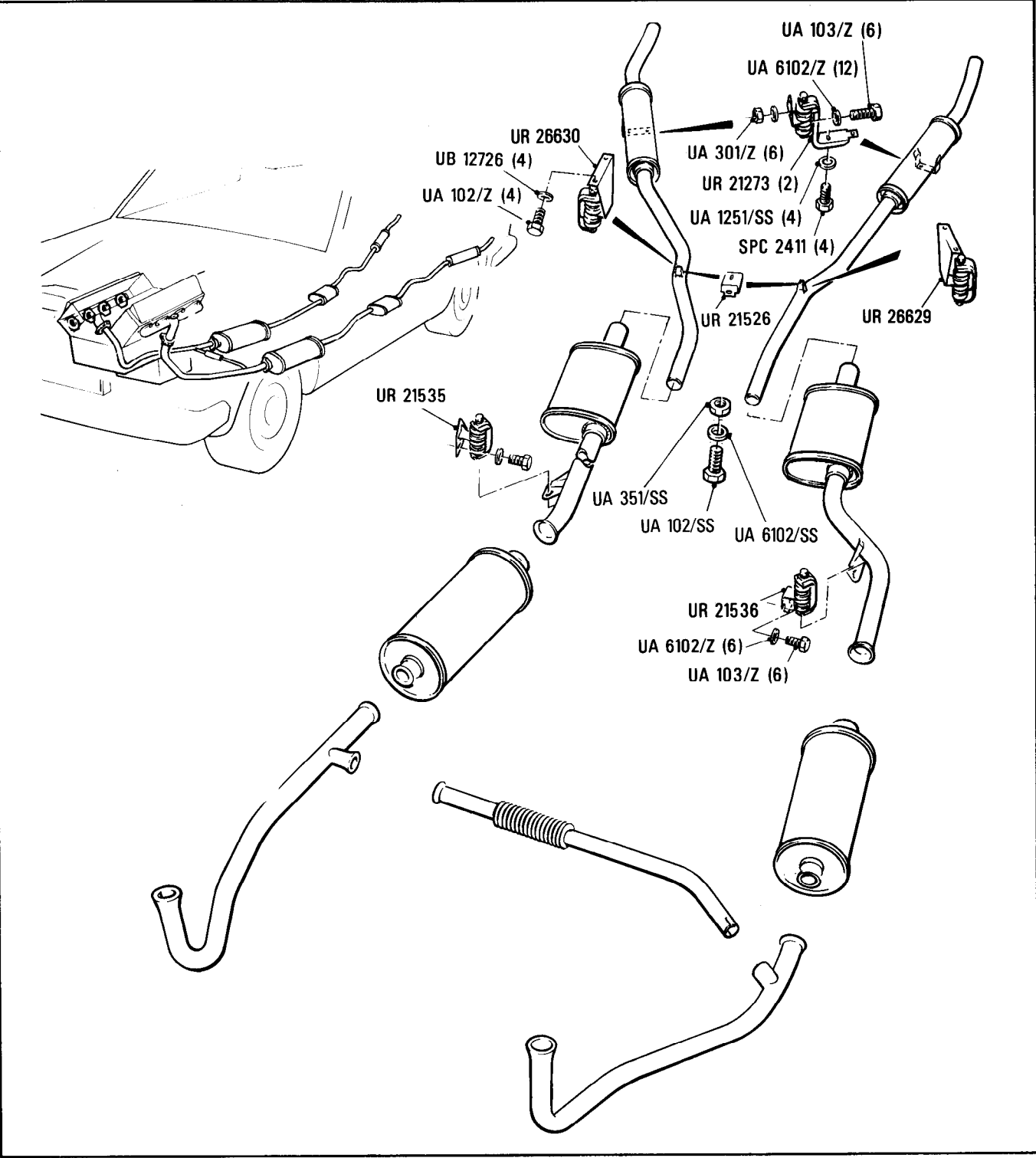
**Exhaust System**

Grassfire Shields & Exhaust Mountings

Cars for Countries other than N. America & Japan

Parts marked thus \* refer to Additional Information below

◀Left-hand ▶Right-hand



**Additional Information**

© Rolls-Royce Motor Cars Limited 1991

Q2-002-01

Rolls-Royce  
Corniche

Bentley  
Continental

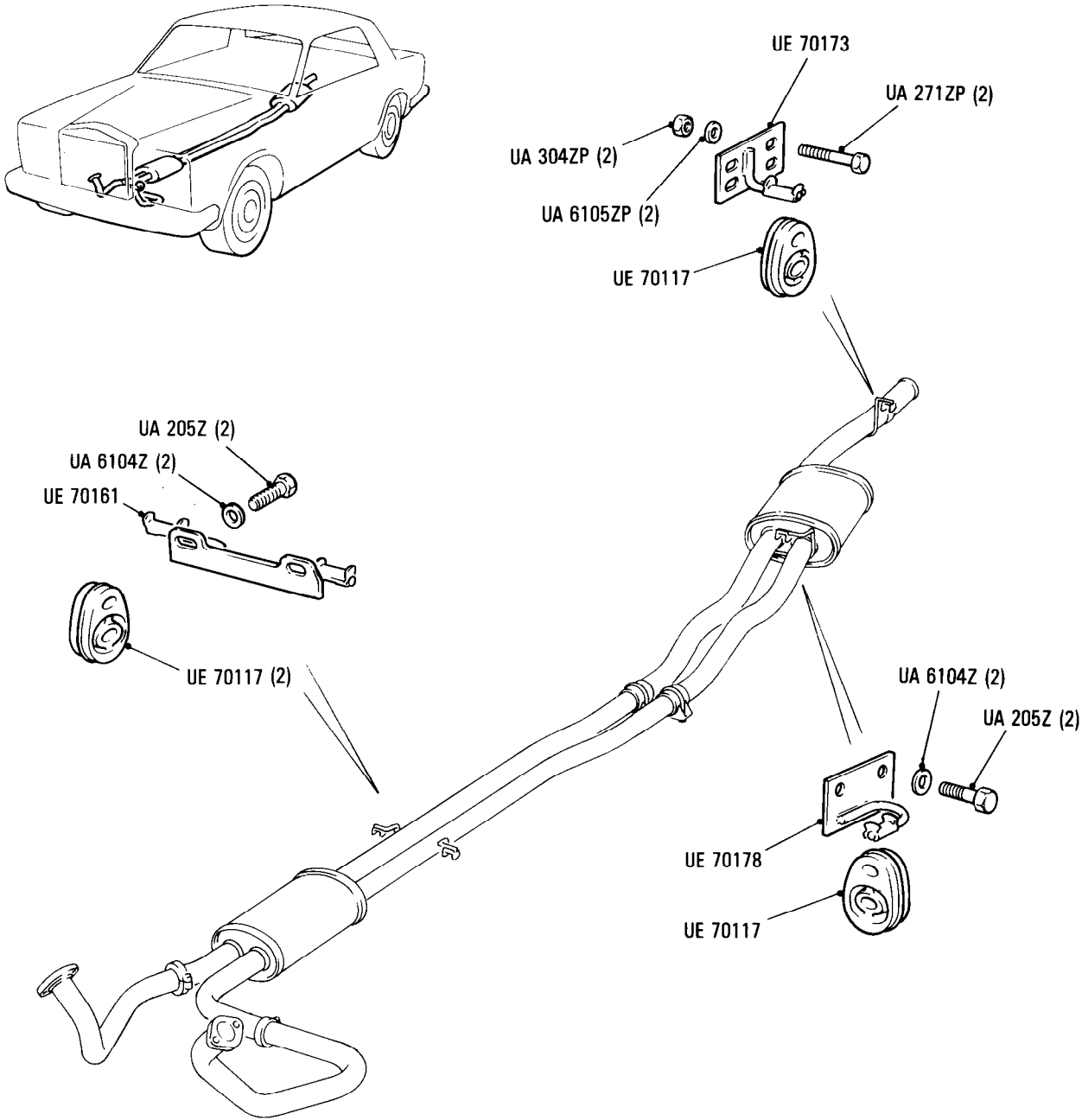
Car serial number

SCAZD0000HCX20010 to 29290

**Exhaust System**  
Grassfire Shields & Exhaust Mounts  
Cars for Countries other than N. America, Australia, and Japan

Parts marked thus \* refer to Additional Information below

◀ Left-hand ▶ Right-hand



Additional Information

© Rolls-Royce Motor Cars Limited 1991

Q2-020-01

Rolls-Royce  
Corniche  
Bentley  
Continental

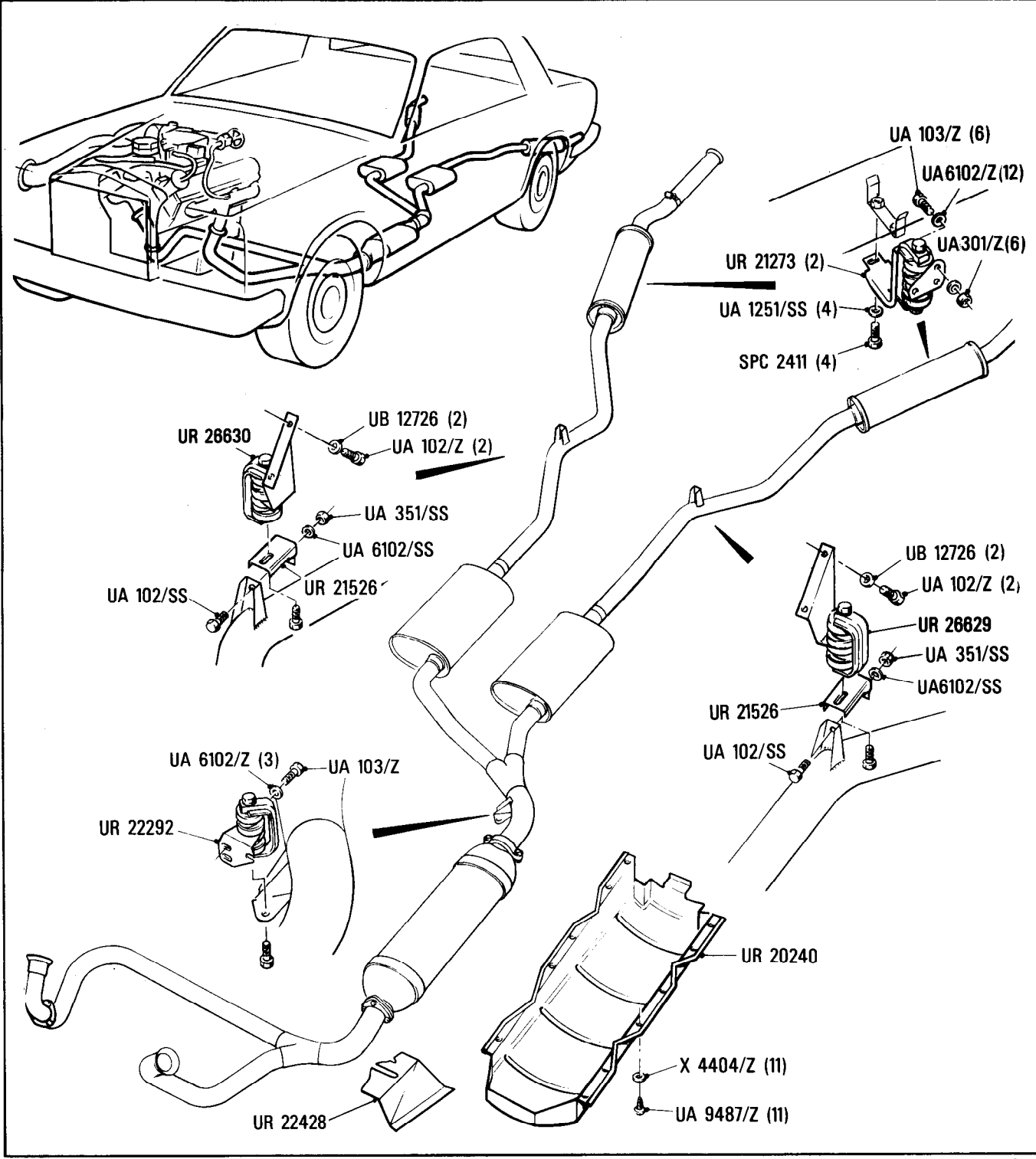
Car serial number

SCAZD0006CCH05037 to 16968

**Exhaust System**  
Grassfire Shields & Exhaust Mounts  
Cars for N. America & California

Parts marked thus \* refer to Additional Information below

◀Left-hand ▶Right-hand



Additional Information

© Rolls-Royce Motor Cars Limited 1991

Q2-021-01

Rolls-Royce  
Corniche

Bentley  
Continental

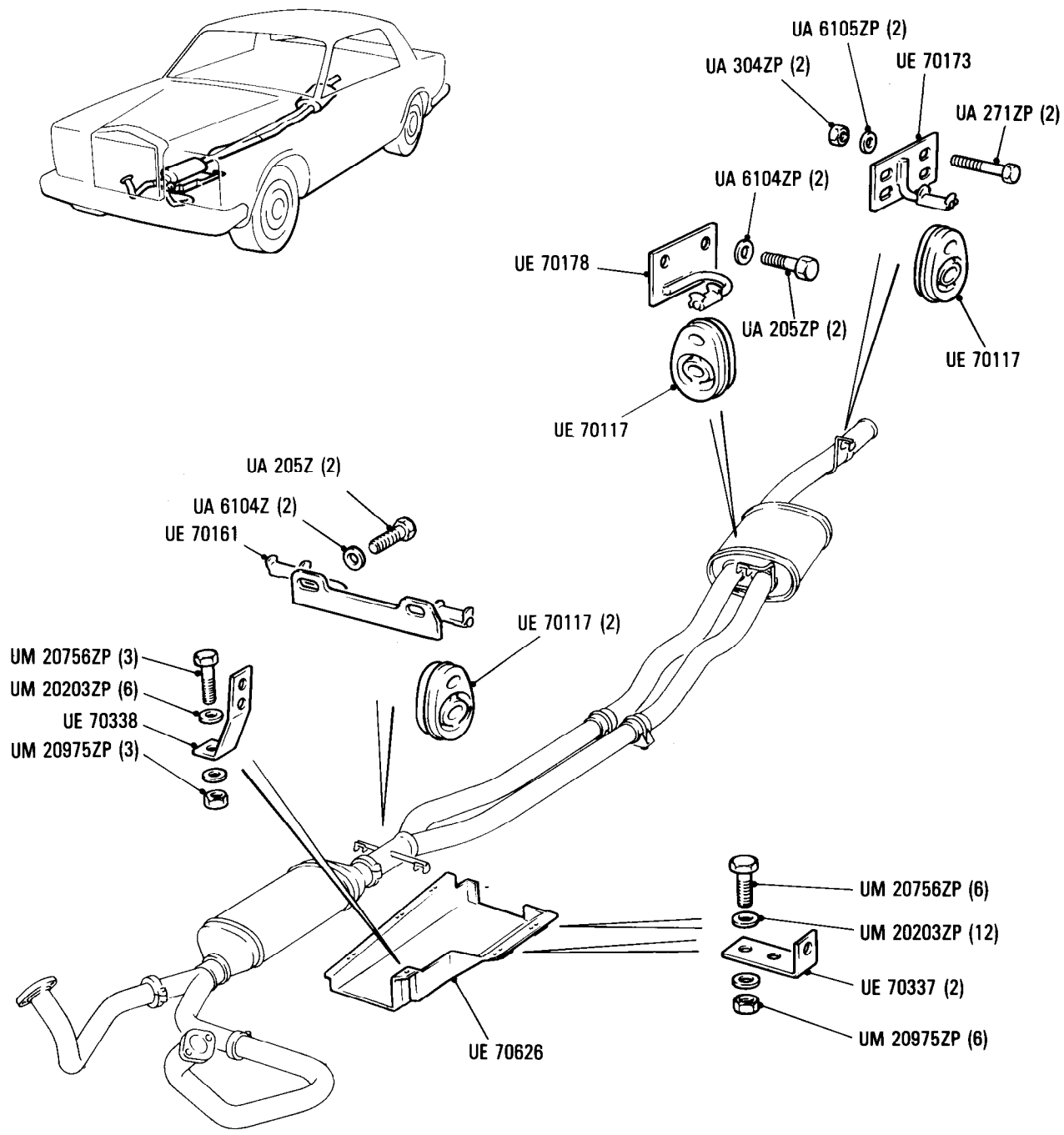
**Exhaust System**  
Grassfire Shields & Exhaust Mounts  
Cars for N. America & Australia

Car serial number

SCAZD0000HCX20010 to 29290

Parts marked thus \* refer to Additional Information below

◀Left-hand ▶Right-hand



Additional Information

© Rolls-Royce Motor Cars Limited 1991

Q2·040·01

Rolls-Royce  
Corniche  
Bentley  
Continental

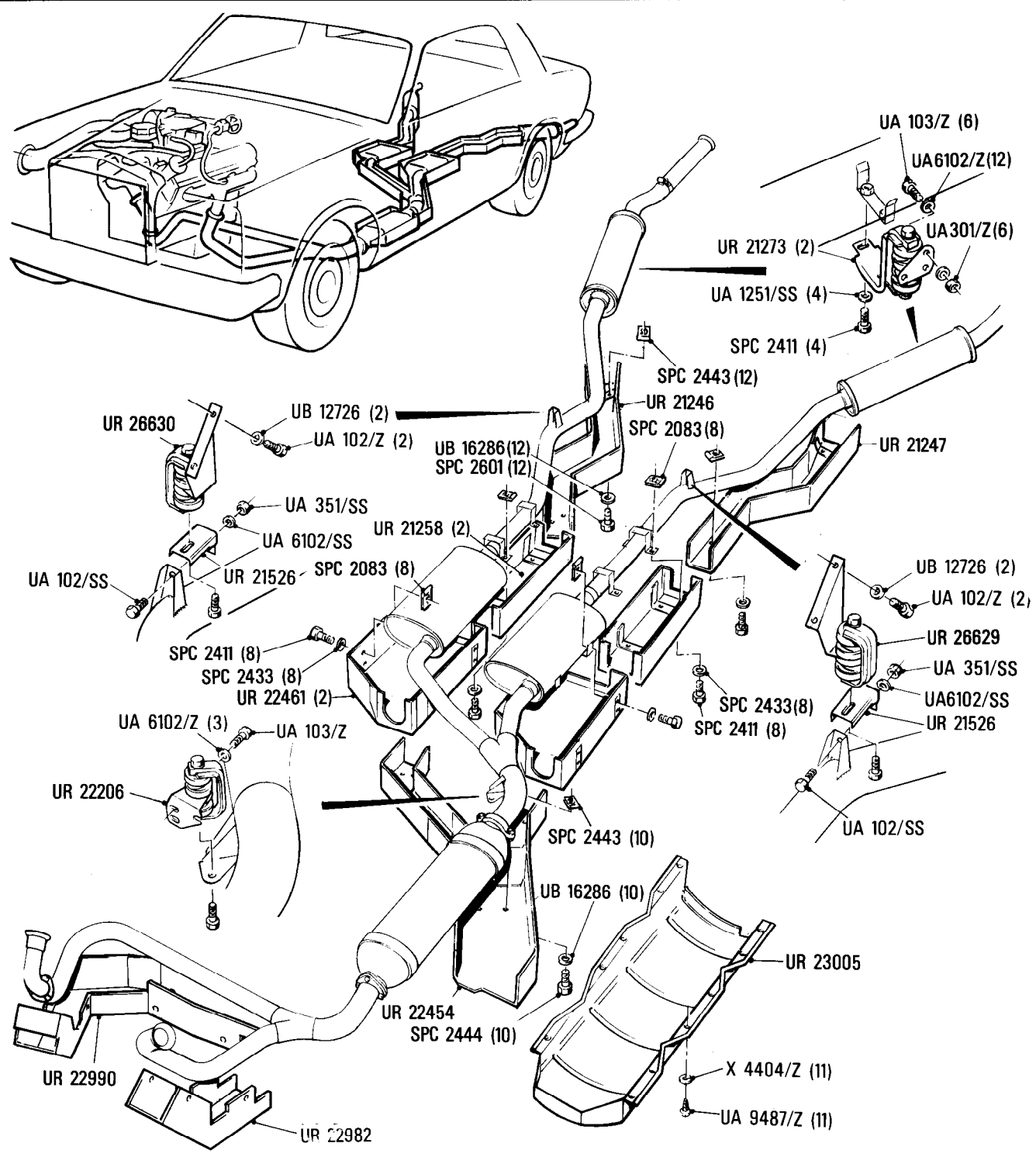
Car serial number

SCAZD0006CCH05037 to 16968

**Exhaust System**  
Grassfire Shields and Exhaust Mounts  
Cars for Japan

Parts marked thus \* refer to Additional Information below

◀Left-hand ▶Right-hand



Additional Information

© Rolls-Royce Motor Cars Limited 1991

## Exhaust System

## Grassfire Shields & Exhaust Mounts

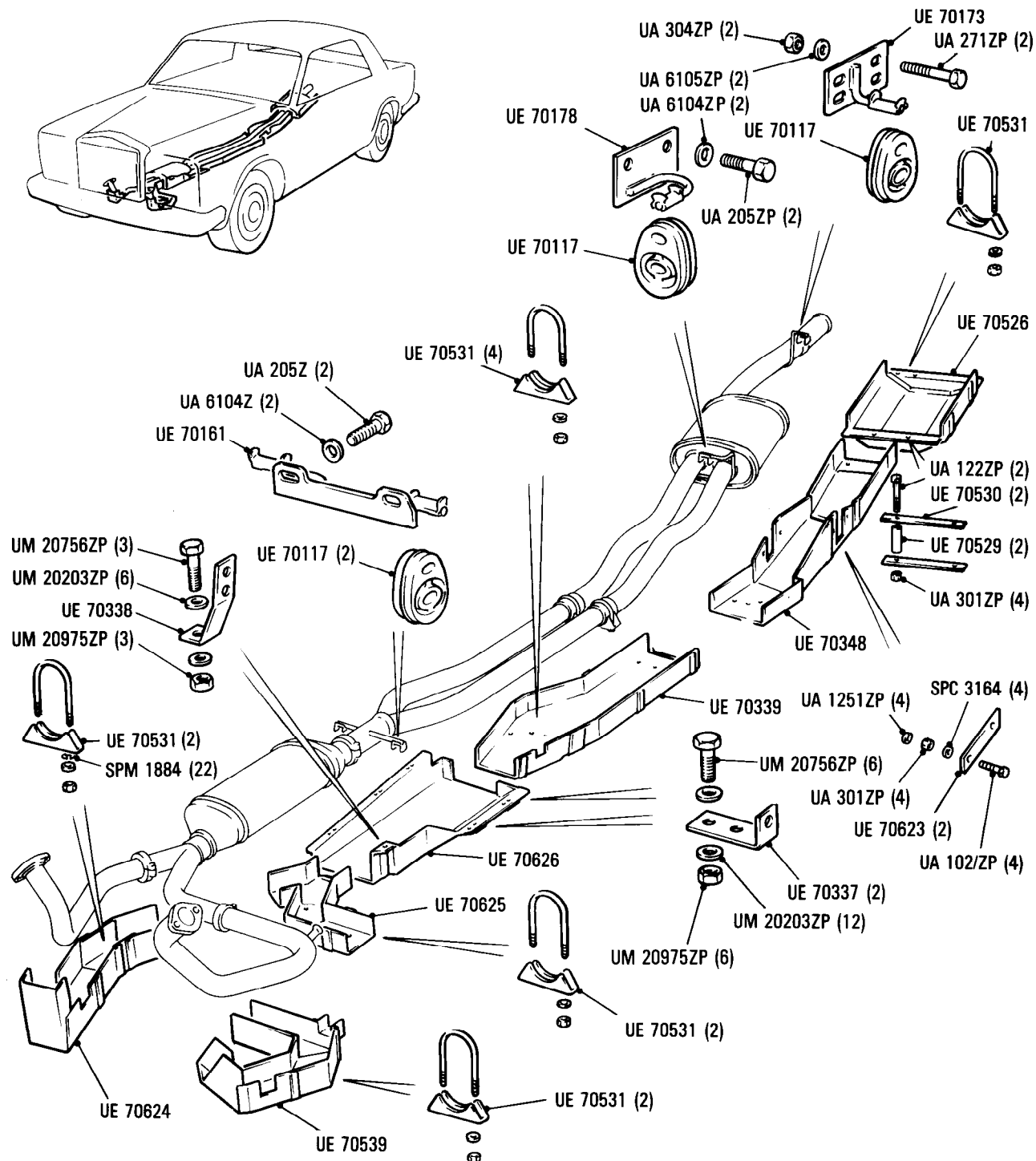
## Cars for Japan

Parts marked thus \* refer to Additional Information below

◁ Left-hand ▷ Right-hand

**Car serial number**

SCAZD0000HCX20010 to 29290



### Additional Information

© Rolls-Royce Motor Cars Limited 1991